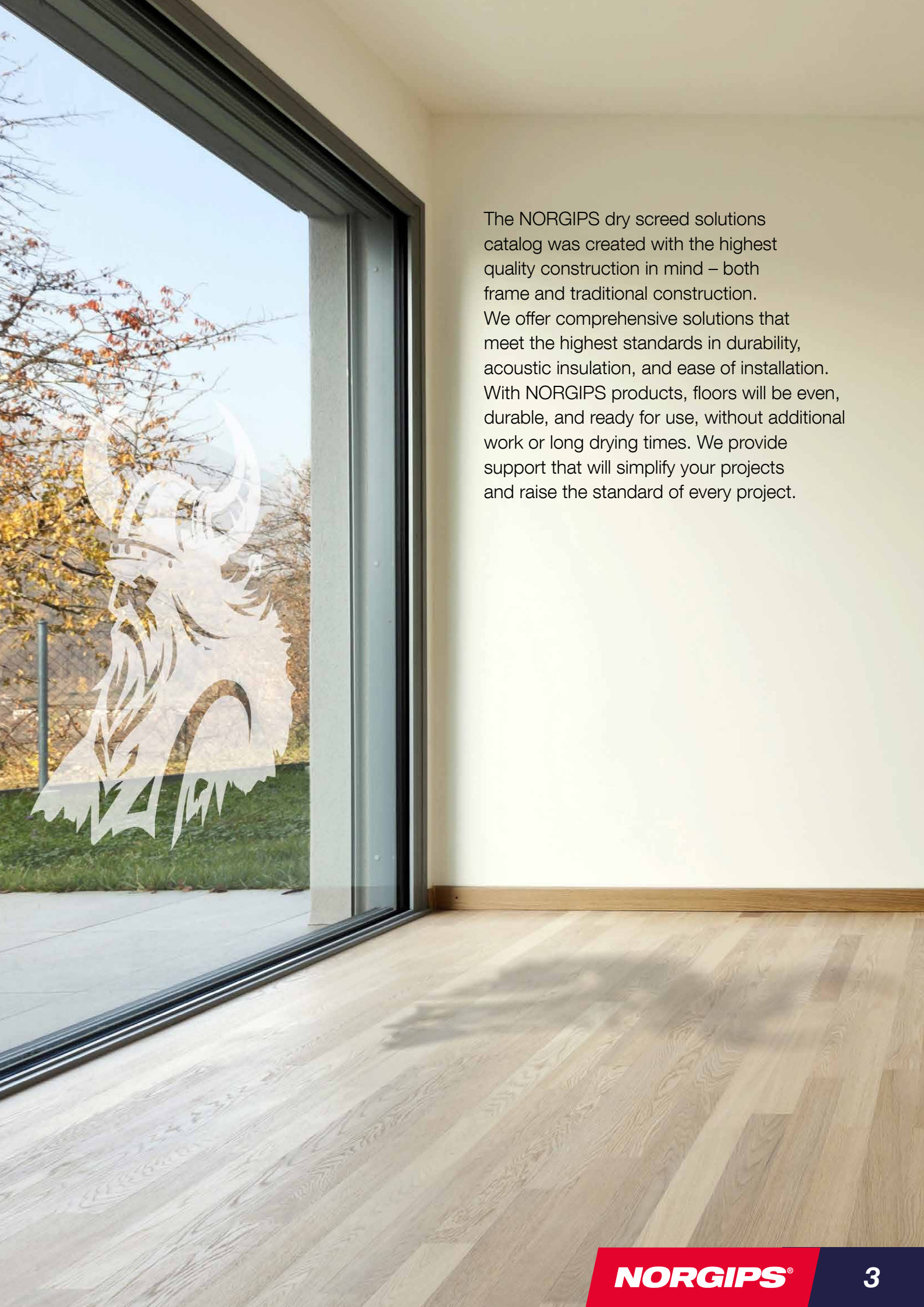


**NORGIPS®**



**DRY SCREED**





The NORGIPS dry screed solutions catalog was created with the highest quality construction in mind – both frame and traditional construction. We offer comprehensive solutions that meet the highest standards in durability, acoustic insulation, and ease of installation. With NORGIPS products, floors will be even, durable, and ready for use, without additional work or long drying times. We provide support that will simplify your projects and raise the standard of every project.

How to read  
**NORGIPS floor solutions**



**SOLUTION CODE**

**SJ – 2x 12,5 DFIR/PD – F**

**F** – fire rating solution

**DFIR** – NORGIPS floor plasterboard

**Type of substrate:**

**PD** – wooden substrate (e.g. ceiling made of wooden beams covered with boards, e.g. OSB)

**PS** – solid surface (e.g. concrete slab)

**PK** – loose substrate (e.g. expanded clay)

**PI** – a substrate made of insulating boards

(e.g. mineral wool, polystyrene e.g. EPS 100 – 0.38)

**12,5** – plasterboard thickness [mm]

**2x** – number of plasterboard layers

**SJ** – dry screed



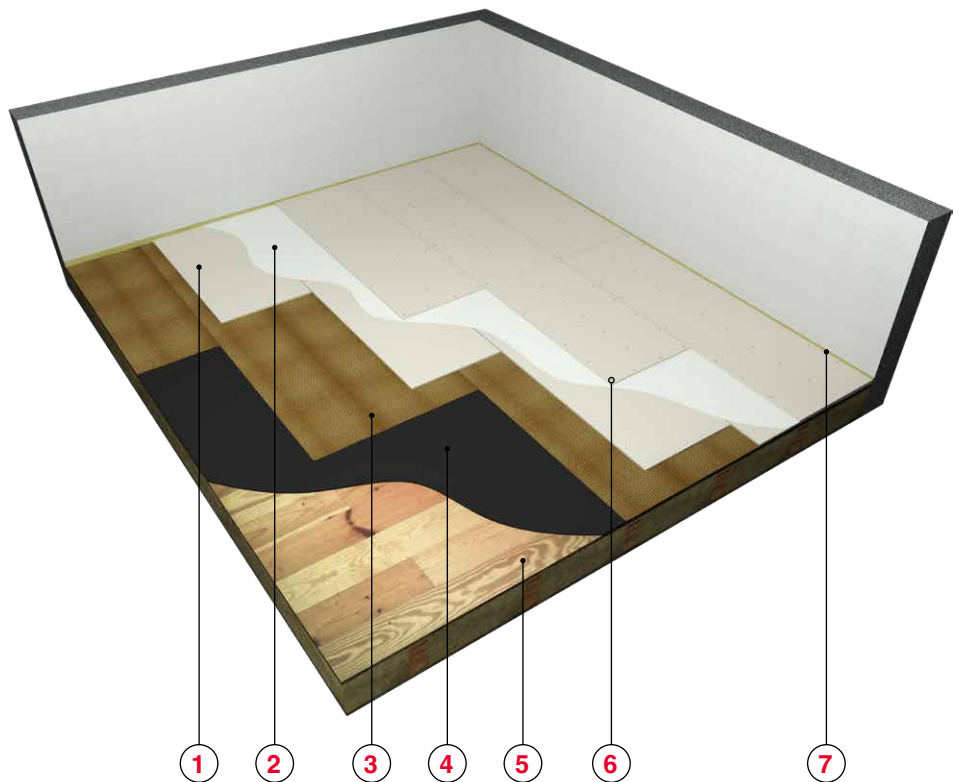
***NORGIPS solutions***  
***– your safety and comfort!***

# Dry screed – SJ

Wooden substrate – PD

## NORGIPS solution elements:

- ① Floor plasterboard NORGIPS KP type DFIR th. 12,5 mm
- ② NORGIPS Start gypsum filler or glue intended for linoleum, vinyl or parquet (for two layers of DFIR boards)
- ③ Leveling layer (e.g., corrugated cardboard)
- ④ Optional moisture insulation with insulating felt or PE foil
- ⑤ Wooden ceiling
- ⑥ Norgips 3,5 x 25 mm wood screws or C 4/23 mm staples spaced max. every 30 cm
- ⑦ 10 mm mineral wool expansion joint



Fire  
resistance  
class



Acoustic  
insulation  
increase  $\Delta R_w$



Thickness of dry  
screed (without  
insulating layer)



Dry screed mass  
(without insulating  
and leveling layers)

Solution name		Fire resistance class	Acoustic insulation increase $\Delta R_w$	Thickness of dry screed (without insulating layer)	Dry screed mass (without insulating and leveling layers)
SJ-1x12,5 DFIR/PD	<b>1x layer of DFIR boards</b>	–	–	12,5 mm	13 kg/m <sup>2</sup>
SJ-2x12,5 DFIR/PD-F	<b>2x layers of DFIR boards</b>	60 EI/REI	up to 17 dB	25 mm	29 kg/m <sup>2</sup>
SJ-2x12,5 DFIR/PD	<b>2x layers of DFIR boards</b>	–	up to 17 dB	25 mm	27 kg/m <sup>2</sup>

**Unlock NORGIPS Performance**

Explore Our Floor Selector!

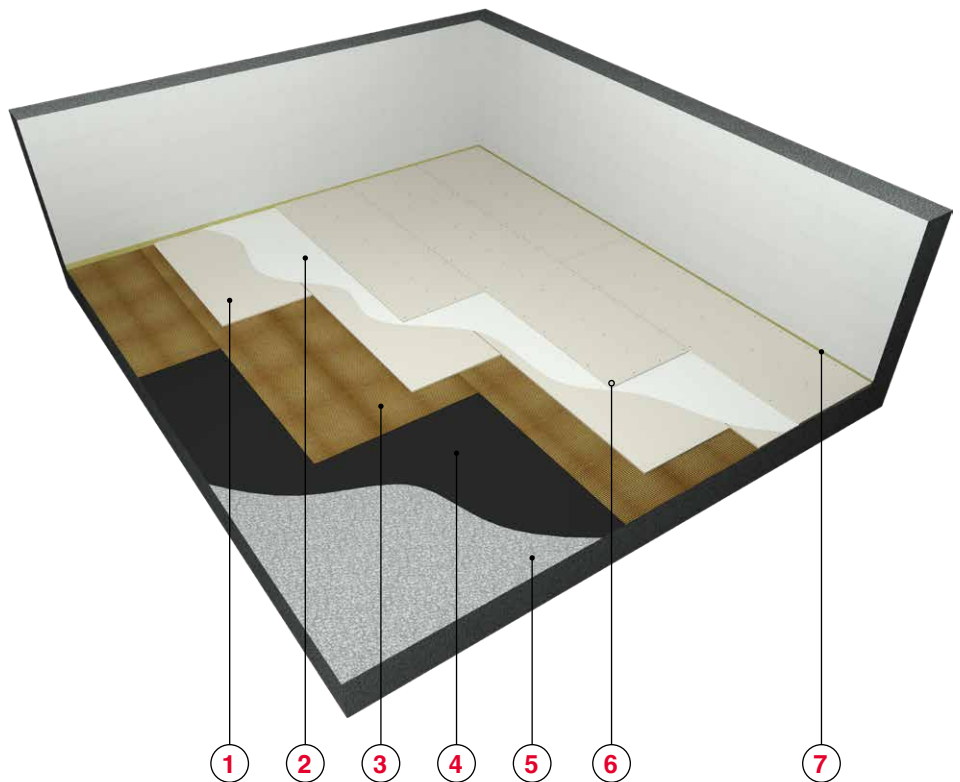


# Dry screed – SJ

Solid substrate – PS

## NORGIPS solution elements:

- ① Floor plasterboard NORGIPS KP type DFIR th. 12,5 mm
- ② NORGIPS Start gypsum filler or glue intended for linoleum, vinyl or parquet (for two layers of DFIR boards)
- ③ Leveling layer (e.g., corrugated cardboard)
- ④ Optional moisture insulation with insulating felt or PE foil
- ⑤ Solid surface (e.g. concrete slab)
- ⑥ Norgips 3.5 x 25 mm wood screws or C 4/23 mm staples spaced max. every 30 cm
- ⑦ 10 mm mineral wool expansion joint



**Fire resistance class**



**Acoustic insulation increase  $\Delta R_w$**



**Thickness of dry screed (without insulating layer)**



**Dry screed mass (without insulating and leveling layers)**

Solution name	2x layers of DFIR boards	Fire resistance class	Acoustic insulation increase $\Delta R_w$	Thickness of dry screed (without insulating layer)	Dry screed mass (without insulating and leveling layers)
SJ-2x12,5 DFIR/PS-F	2x layers of DFIR boards	60 EI/REI	up to 17 dB	25 mm	29 kg/m <sup>2</sup>
SJ-2x12,5 DFIR/PS	2x layers of DFIR boards	-	up to 17 dB	25 mm	27 kg/m <sup>2</sup>

**Unlock NORGIPS Performance**  
Explore Our Floor Selector!

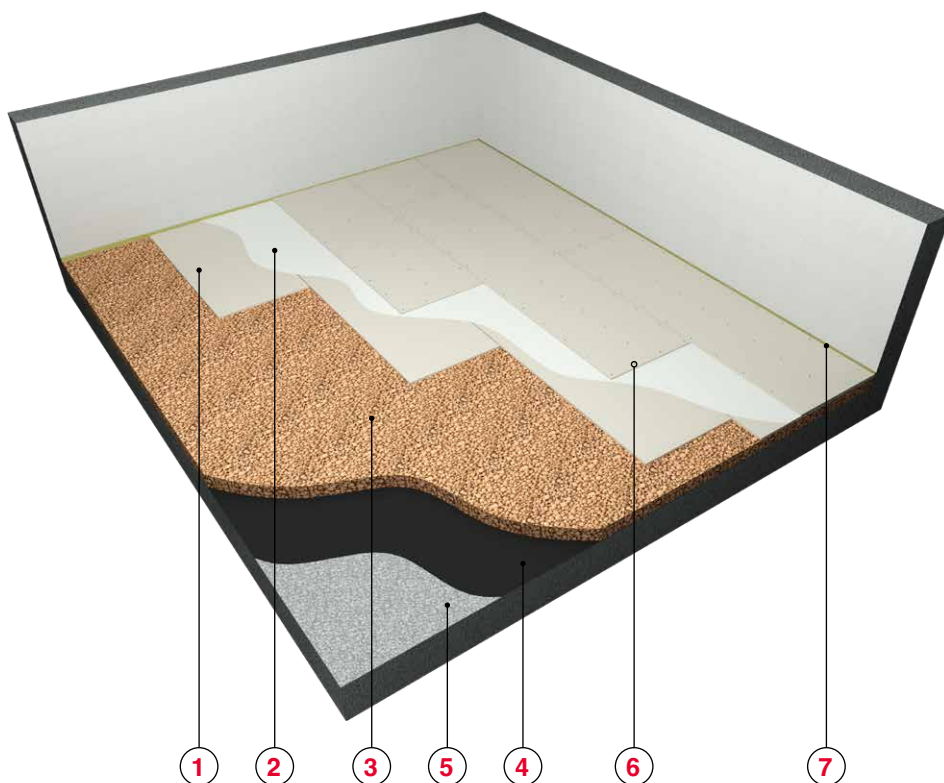


# Dry screed – SJ

Loose substrate – PK

## NORGIPS solution elements:

- ① Floor plasterboard NORGIPS KP type DFIR th. 12,5 mm
- ② NORGIPS Start gypsum filler or glue intended for linoleum, vinyl or parquet (for two layers of DFIR boards)
- ③ Leveling bedding (e.g. expanded clay with a fraction of 0/4 mm) with a thickness of 4 to 10 cm 4
- ④ Optional moisture insulation with insulating felt or PE foil
- ⑤ Solid surface (e.g. concrete slab)
- ⑥ Norgips 3,5 x 25 mm wood screws or C 4/23 mm staples spaced max. every 30 cm
- ⑦ 10 mm mineral wool expansion joint



**Fire  
resistance  
class**



**Acoustic  
insulation  
increase  $\Delta R_w$**



**Thickness of dry  
screed (without  
insulating layer)**



**Dry screed mass  
(without insulating  
and leveling layers)**

Solution name	2x layers of DFIR boards	Fire resistance class	Acoustic insulation increase $\Delta R_w$	Thickness of dry screed (without insulating layer)	Dry screed mass (without insulating and leveling layers)
SJ-2x12,5 DFIR/PK-F	2x layers of DFIR boards	60 EI/REI	up to 17 dB	25 mm	29 kg/m <sup>2</sup>
SJ-2x12,5 DFIR/PK	2x layers of DFIR boards	–	up to 17 dB	25 mm	27 kg/m <sup>2</sup>

**Unlock NORGIPS Performance**

Explore Our Floor Selector!

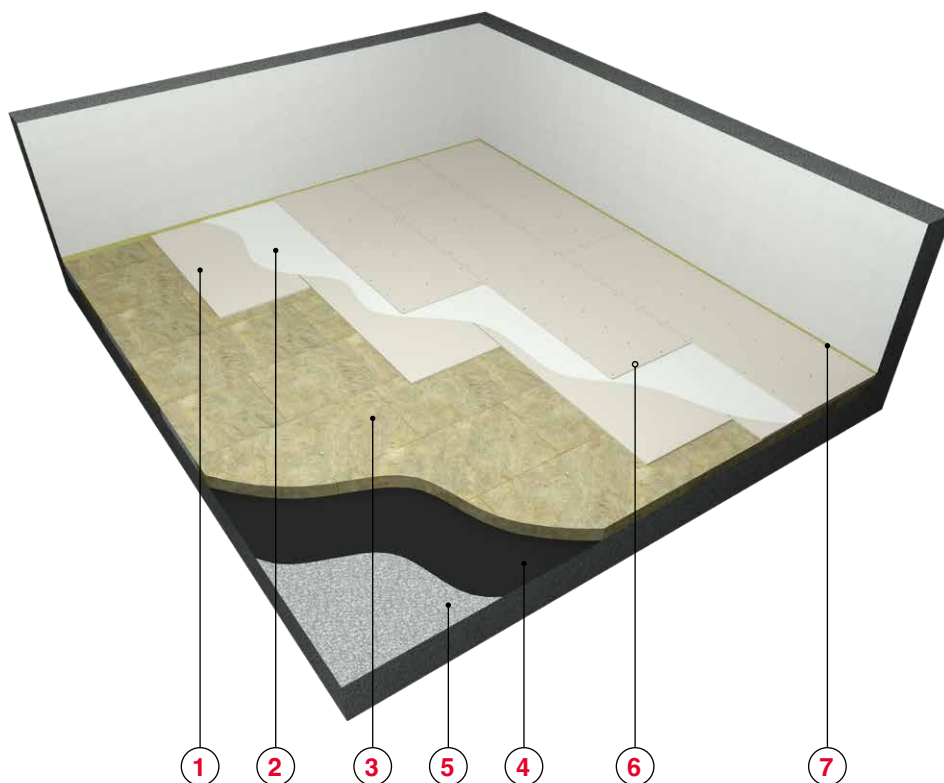


# Dry screed – SJ

Substrate made of insulating boards – PI

## NORGIPS solution elements:

- ① Floor plasterboard NORGIPS KP type DFIR th. 12,5 mm
- ② NORGIPS Start gypsum filler or glue intended for linoleum, vinyl or parquet (for two layers of DFIR boards)
- ③ A substrate made of insulating boards (e.g. mineral wool, polystyrene e.g. EPS 100 - 0.38)
- ④ Optional moisture insulation with insulating felt or PE foil
- ⑤ Solid surface (e.g. concrete slab)
- ⑥ Norgips 3.5 x 25 mm wood screws or C 4/23 mm staples spaced max. every 30 cm
- ⑦ 10 mm mineral wool expansion joint



**Fire  
resistance  
class**



**Acoustic  
insulation  
increase  $\Delta R_w$**



**Thickness of dry  
screed (without  
insulating layer)**



**Dry screed mass  
(without insulating  
and leveling layers)**

Solution name	2x layers of DFIR boards	Fire resistance class	Acoustic insulation increase $\Delta R_w$	Thickness of dry screed (without insulating layer)	Dry screed mass (without insulating and leveling layers)
SJ-2x12,5 DFIR/PK-F	2x layers of DFIR boards	60 EI/REI	up to 17 dB	25 mm	29 kg/m <sup>2</sup>
SJ-2x12,5 DFIR/PK	2x layers of DFIR boards	-	up to 17 dB	25 mm	27 kg/m <sup>2</sup>

**Unlock NORGIPS Performance**  
Explore Our Floor Selector!

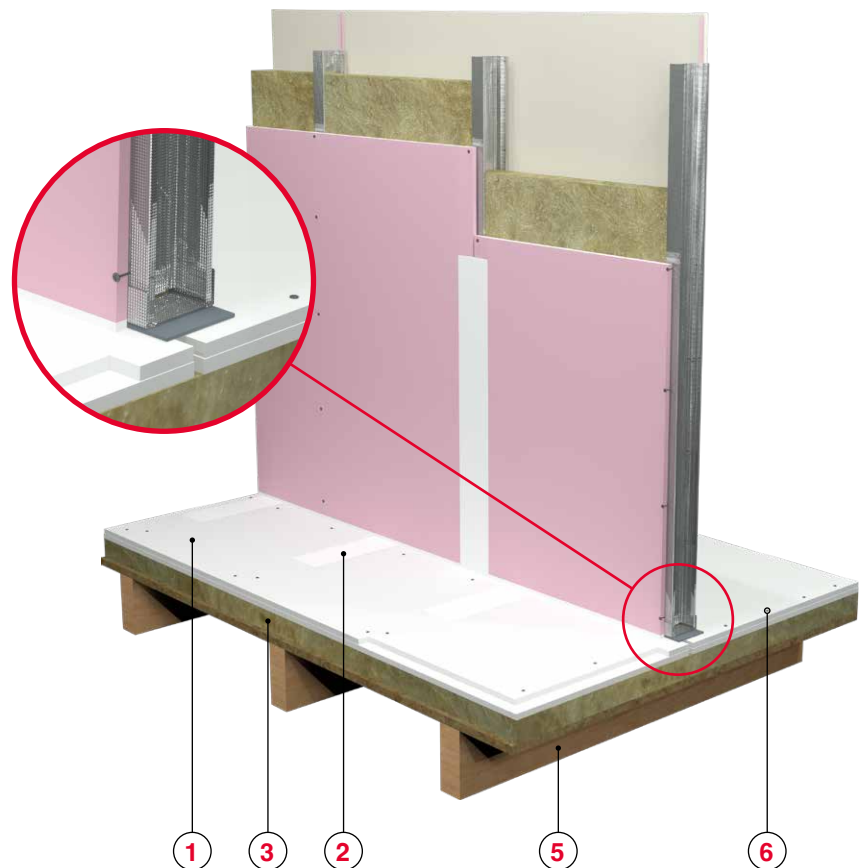
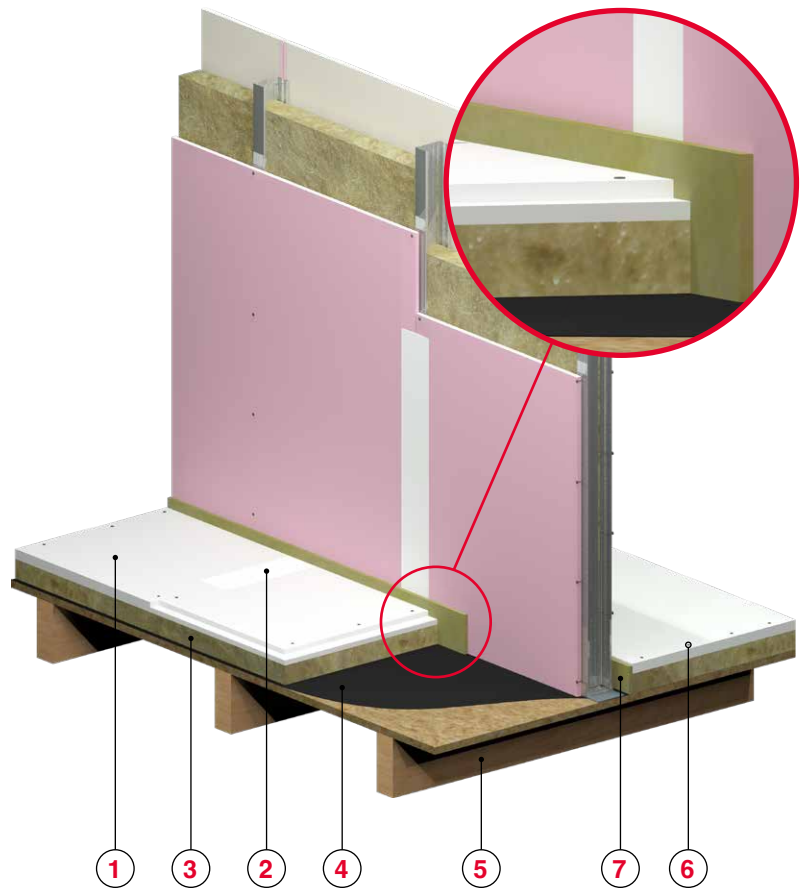


# Assembly details

## Dry screed connections with partition walls

### NORGIPS solution elements:

- 1 Floor plasterboard NORGIPS KP type DFIR th. 12,5 mm
- 2 NORGIPS Start gypsum filler or glue intended for linoleum, vinyl or parquet (for two layers of DFIR boards)
- 3 A substrate made of insulating boards (e.g. mineral wool, polystyrene e.g. EPS 100 - 0.38)
- 4 Optional moisture insulation with insulating felt or PE foil
- 5 Wooden ceiling
- 6 Norgips 3.5 x 25 mm wood screws or C 4/23 mm staples spaced max. every 30 cm
- 7 10 mm mineral wool expansion joint



### ATTENTION!

Due to acoustic insulation and impact sound transmission, it is important to ensure proper sealing of the dry screed. Acoustic expansion joints (e.g. mineral wool) should always be used around the perimeter of the entire room, where the screed meets the existing walls.

When building a wall directly on a dry screed, it is recommended to create an expansion joint to limit sound transmission between rooms.

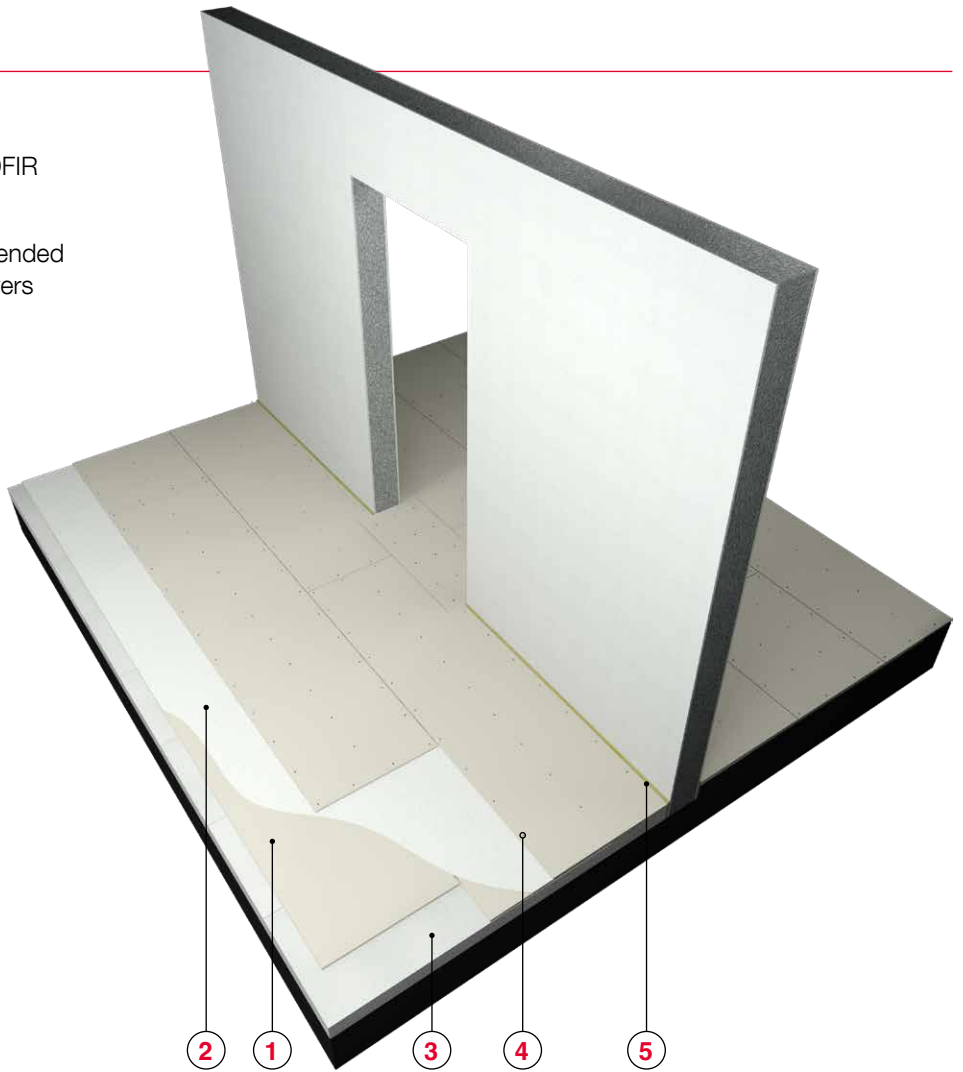
# Assembly details

## Expansion joint between rooms

### Option 1

#### NORGIPS solution elements

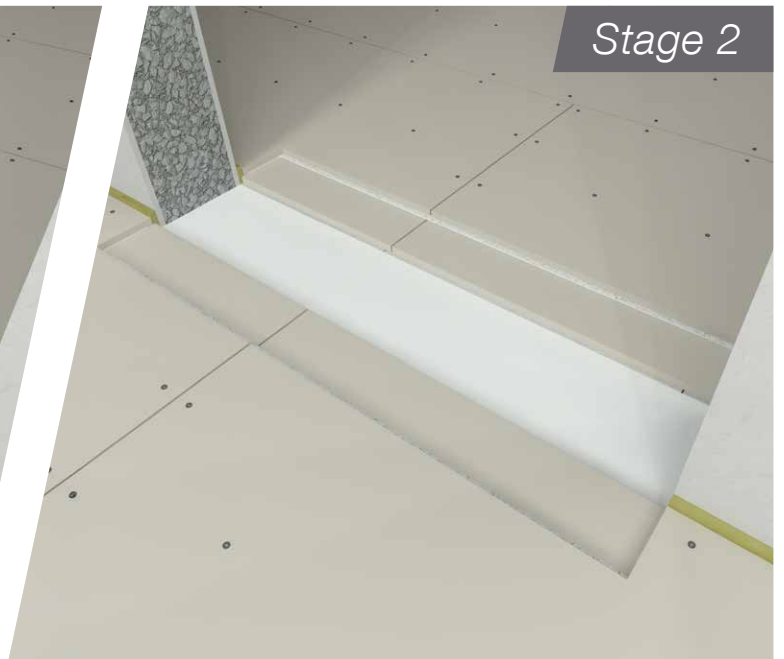
- 1 Floor plasterboard NORGIPS KP type DFIR th. 12,5 mm
- 2 NORGIPS Start gypsum filler or glue intended for linoleum, vinyl or parquet (for two layers of DFIR boards)
- 3 A substrate made of insulating boards (e.g. mineral wool, polystyrene e.g. EPS 100 - 0.38)
- 4 Norgips 3.5 x 25 mm wood screws or C 4/23 mm staples spaced max. every 30 cm
- 5 10 mm mineral wool expansion joint



Stage 1



Stage 2



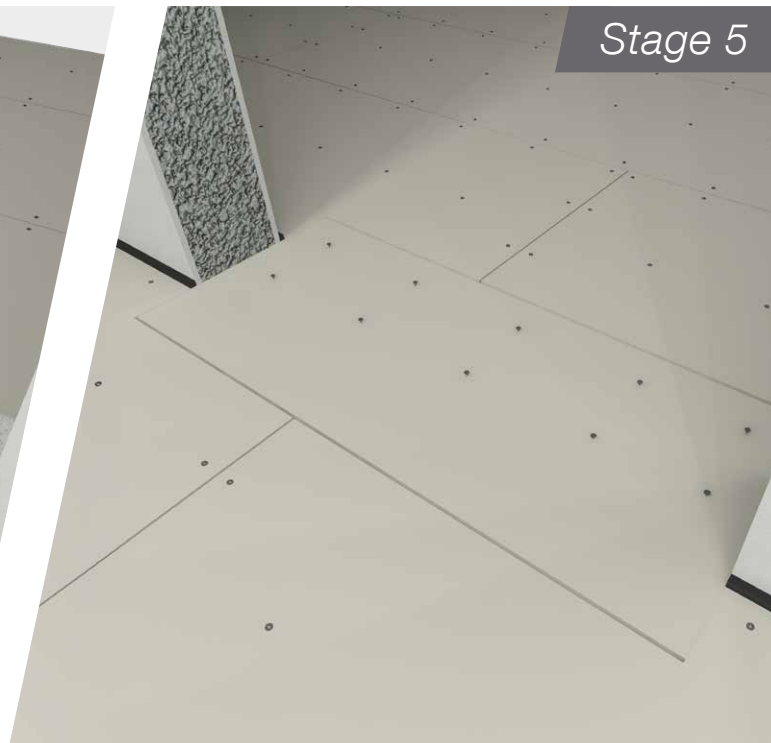
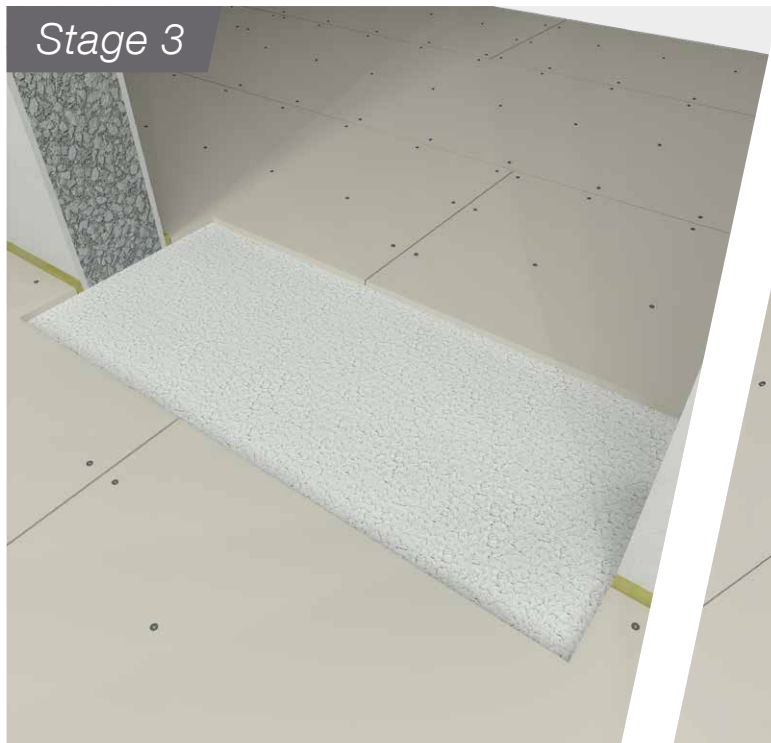
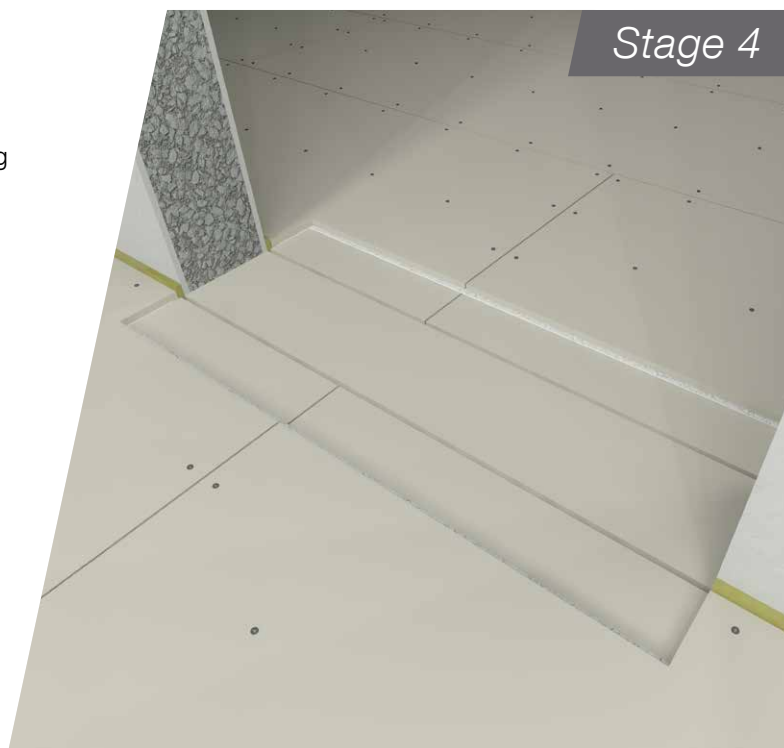
# Assembly details

## Expansion joint between rooms

### Option 1

At the point where two rooms connect, we make an expansion joint in the floor as follows:

- 1 When installing a dry screed in rooms, leave a gap of approximately 15 cm in the second layer of boarding to create expansion joints.
- 2 We fill the resulting void in the structure with insulating material.
- 3 We lay out the appropriately cut piece of floor slab.
- 4 We apply a layer of gypsum filler or glue.
- 5 We screw on the top layer of boarding that fits the opening.



### ATTENTION!

Screed expansion joints should be made when the room diagonal exceeds 15 m and in places where the building has expansion joints.

# Assembly details

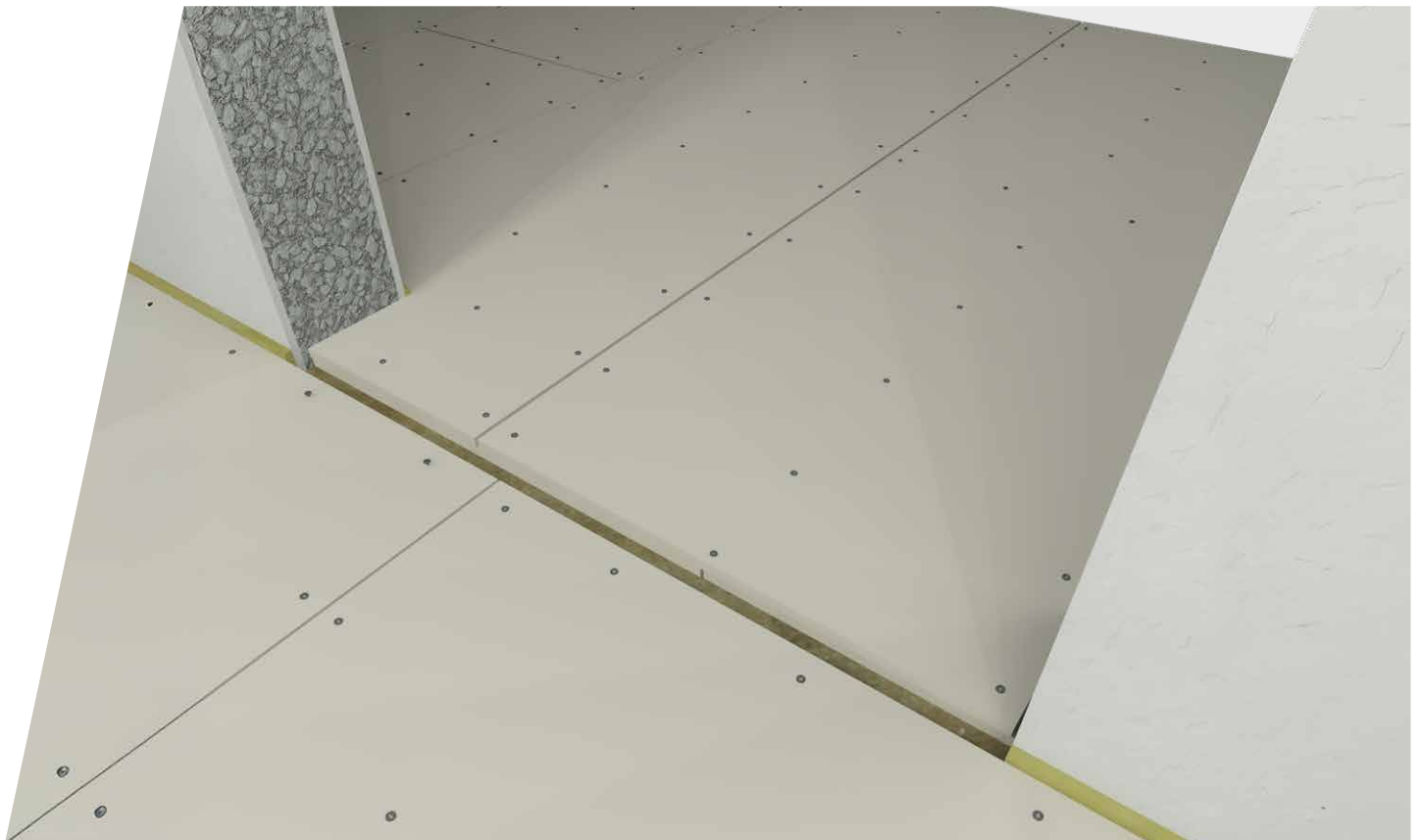
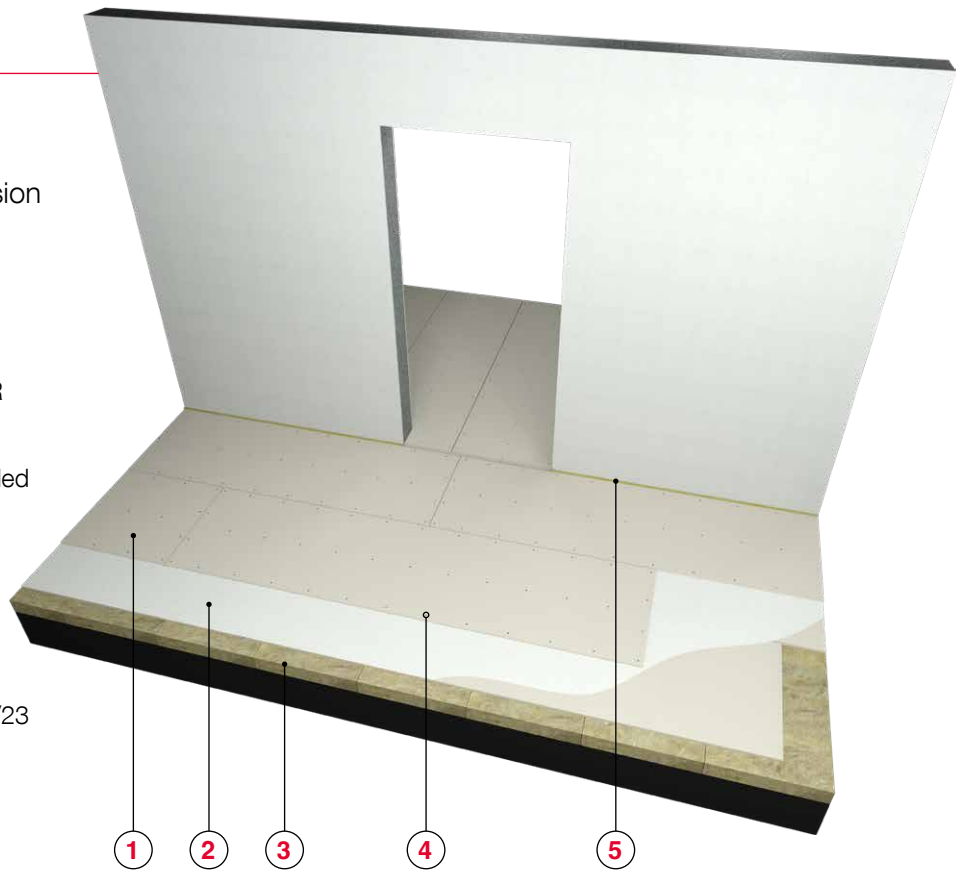
## Expansion joint between rooms

### Option II

By running the top layer of boards perpendicular to the floor layout in the adjacent room, you can create an expansion joint by placing the boards at the door threshold, as shown in the figures below.

#### NORGIPS solution elements:

- 1 Floor plasterboard NORGIPS KP type DFIR th. 12,5 mm
- 2 NORGIPS Start gypsum filler or glue intended for linoleum, vinyl or parquet (for two layers of DFIR boards)
- 3 A substrate made of insulating boards (e.g. mineral wool, polystyrene e.g. EPS 100 - 0.38)
- 4 Norgips 3.5 x 25 mm wood screws or C 4/23 mm staples spaced max. every 30 cm
- 5 10 mm mineral wool expansion joint

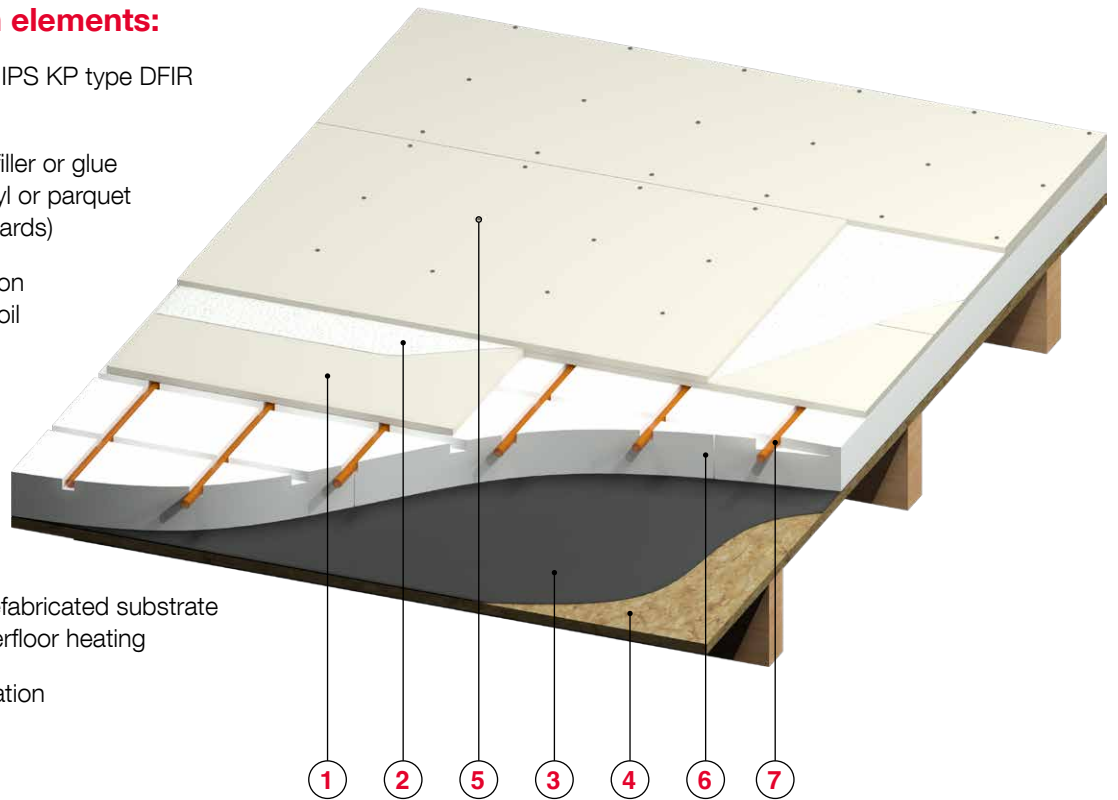


# Assembly details

## Routing heating installations

### NORGIPS solution elements:

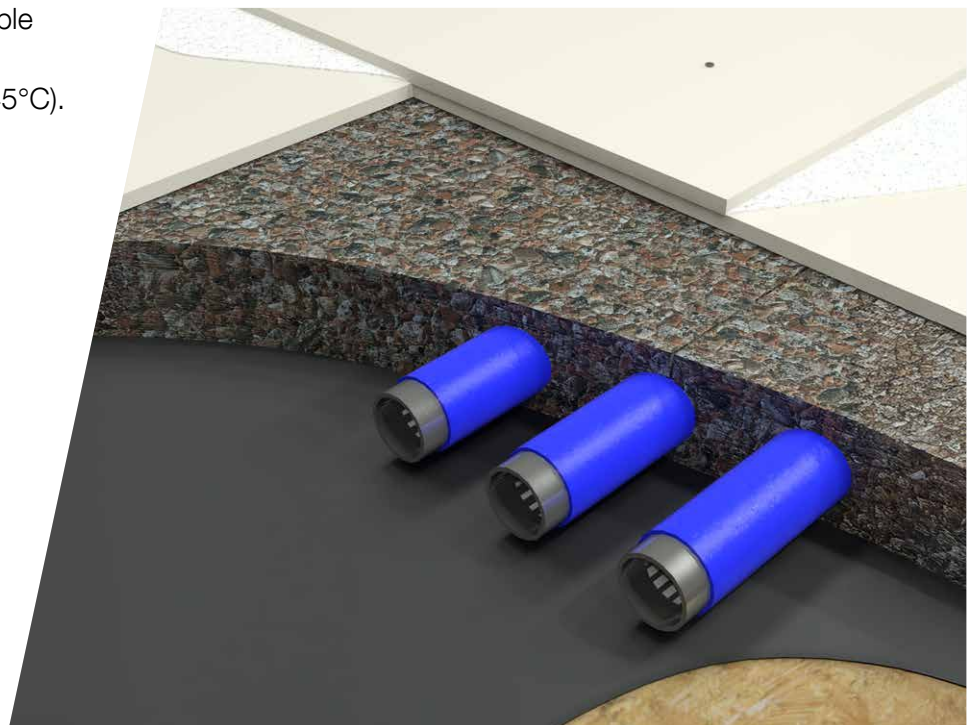
- ① Floor plasterboard NORGIPS KP type DFIR th. 12,5 mm
- ② NORGIPS Start gypsum filler or glue intended for linoleum, vinyl or parquet (for two layers of DFIR boards)
- ③ Optional moisture insulation with insulating felt or PE foil
- ④ Wooden ceiling
- ⑤ Norgips 3.5 x 25 mm wood screws or C 4/23 mm staples spaced max. every 30 cm
- ⑥ Insulating boards or a prefabricated substrate for the installation of underfloor heating
- ⑦ Underfloor heating installation



NORGIPS DFIR floor panels are suitable for installation with underfloor heating systems (heating temperature up to 45°C).

Underfloor heating pipes can then be routed in special fittings for distributing this type of installation.

All installation pipes can also be laid in expanded clay to level the substrate, remembering to use protective conduits.



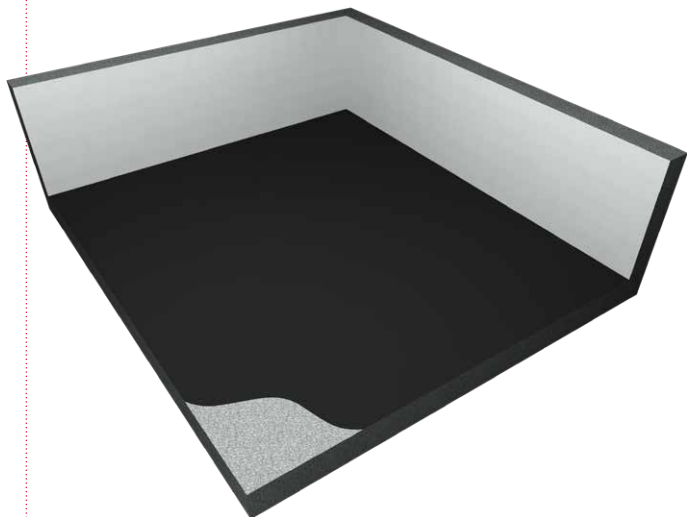
# Dry screed installation

## Assembly stages

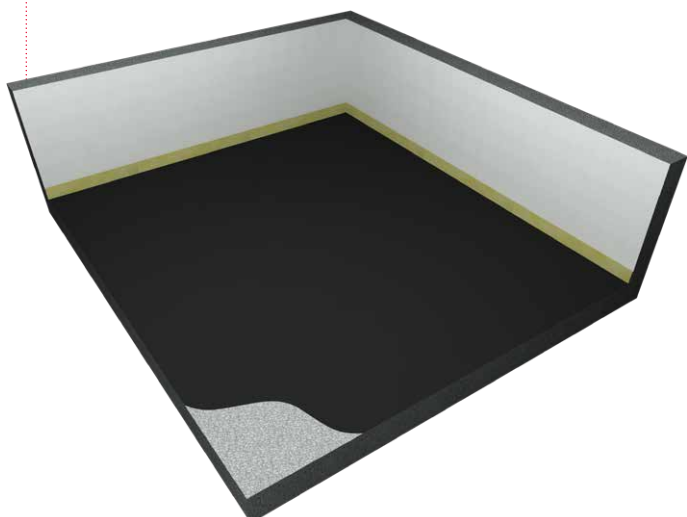
### STAGE I

#### Substrate preparation and installation of expansion joints

- 1 We lay moisture insulation made of insulating felt or PE foil (optional) on the prepared substrate.



- 2 We install 10 mm mineral wool expansion joints along the walls surrounding the room.



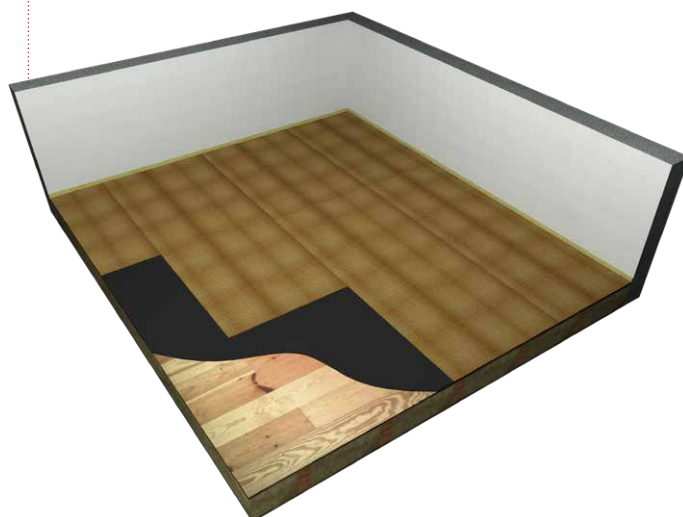
### STAGE II

#### Leveling the substrate

- 1 Uneven surfaces should be levelled using a levelling bedding, e.g. expanded clay with a fraction of 0/4 mm, 4 to 10 cm thick.



- 2 Small irregularities can be minimized by laying a leveling layer of corrugated cardboard or insulating boards, i.e. mineral wool flooring (high density) or polystyrene boards (e.g. EPS 100 – 0.38)



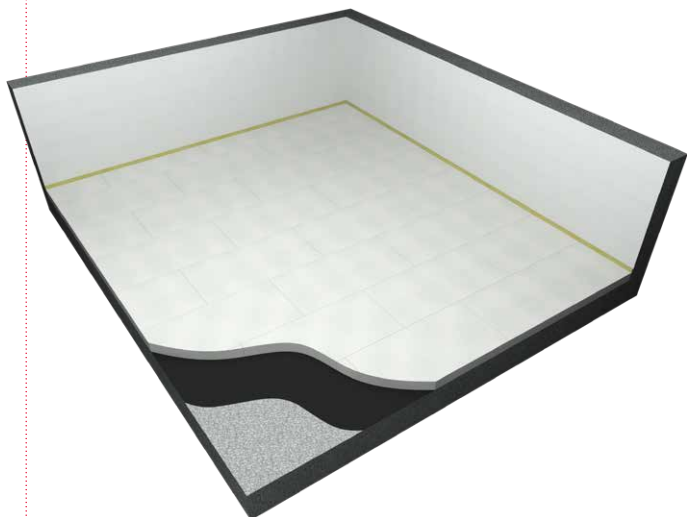
# Dry screed installation

## Assembly stages

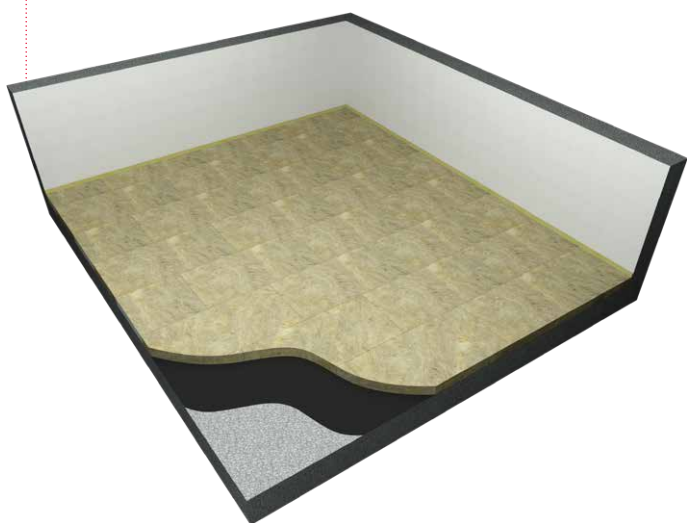
### STAGE III

#### Insulation laying

- 1 We fill the room's subfloor with insulation boards, making sure that they adhere to the previously laid mineral wool expansion joint.



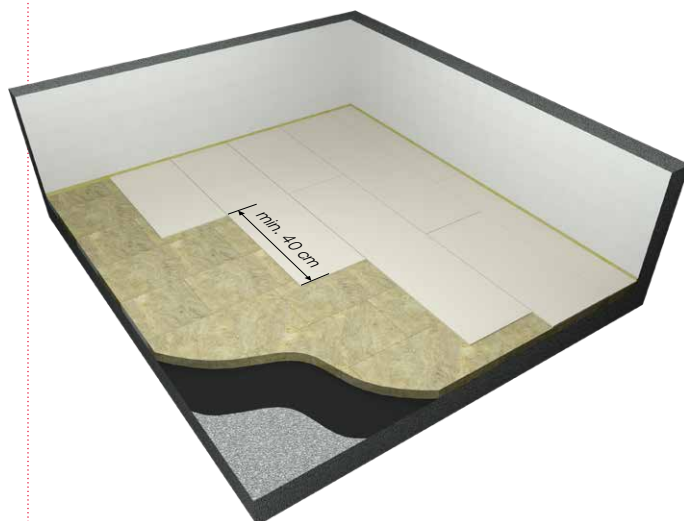
- 2 To insulate the subfloor, you can use high-density mineral wool or EPS boards (e.g. EPS 100 – 0.38)



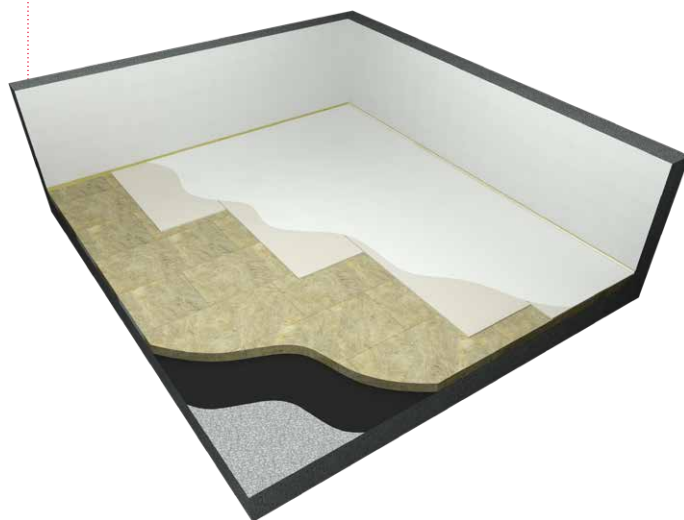
### STAGE IV

#### Floor screed slabs laying

- 1 We begin laying the first (bottom) layer of NORGIPS DFIR boards. The first layer of floor boards is laid dry on the subfloor, ensuring that the shorter edges of adjacent board layers are offset by at least 40 cm.



- 2 The laid boards are glued to the next layer of NORGIPS DFIR boards using gypsum filler or (in the absence of fire safety requirements) appropriate assembly glue.



### ATTENTION!

Special attention should be paid to ensuring that the subfloor provides full and even support for the Norgips floor panels after the leveling layers have been applied. This is a key element that prevents panel cracking and screed problems during the subfloor's operational phase.

3 The second (top) layer of boards is laid so as to maintain the following distances:

- the shorter edges of the top layer are offset from the shorter edges of the bottom layer by at least 40 cm,
- the longer edges of the top layer are offset from the longer edges of the bottom layer by at least 20 cm,
- the shorter edges of adjacent boards in the top layer are offset from each other by 40 cm.

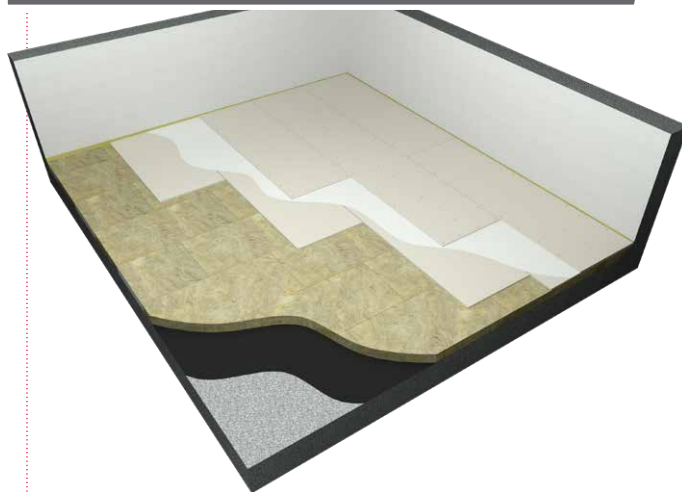


## STAGE V

### Mechanical joining of screed boards

- 1 The top layer boards are attached to the bottom layer boards using C/23 staples or 3.5x25 mm WFD plasterboard screws.
- 2 The spacing between staples or screws is at least 30 cm

#### Option I – layers of boards arranged parallelly

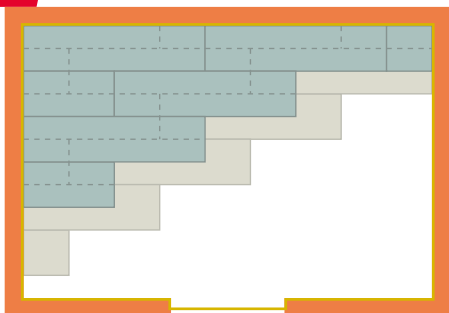


#### Option II – layers of boards arranged perpendicularly



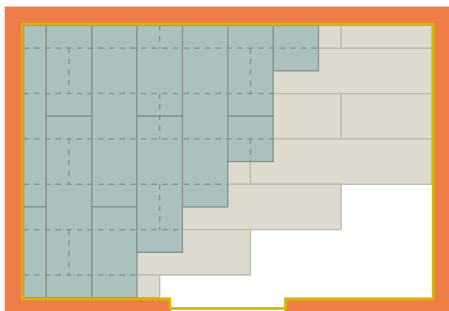
### ATTENTION!

NORGIPS DFIR screed boards can be installed in a **parallel**



or

**perpendicular** arrangement according to the diagrams below.



# Assembly details

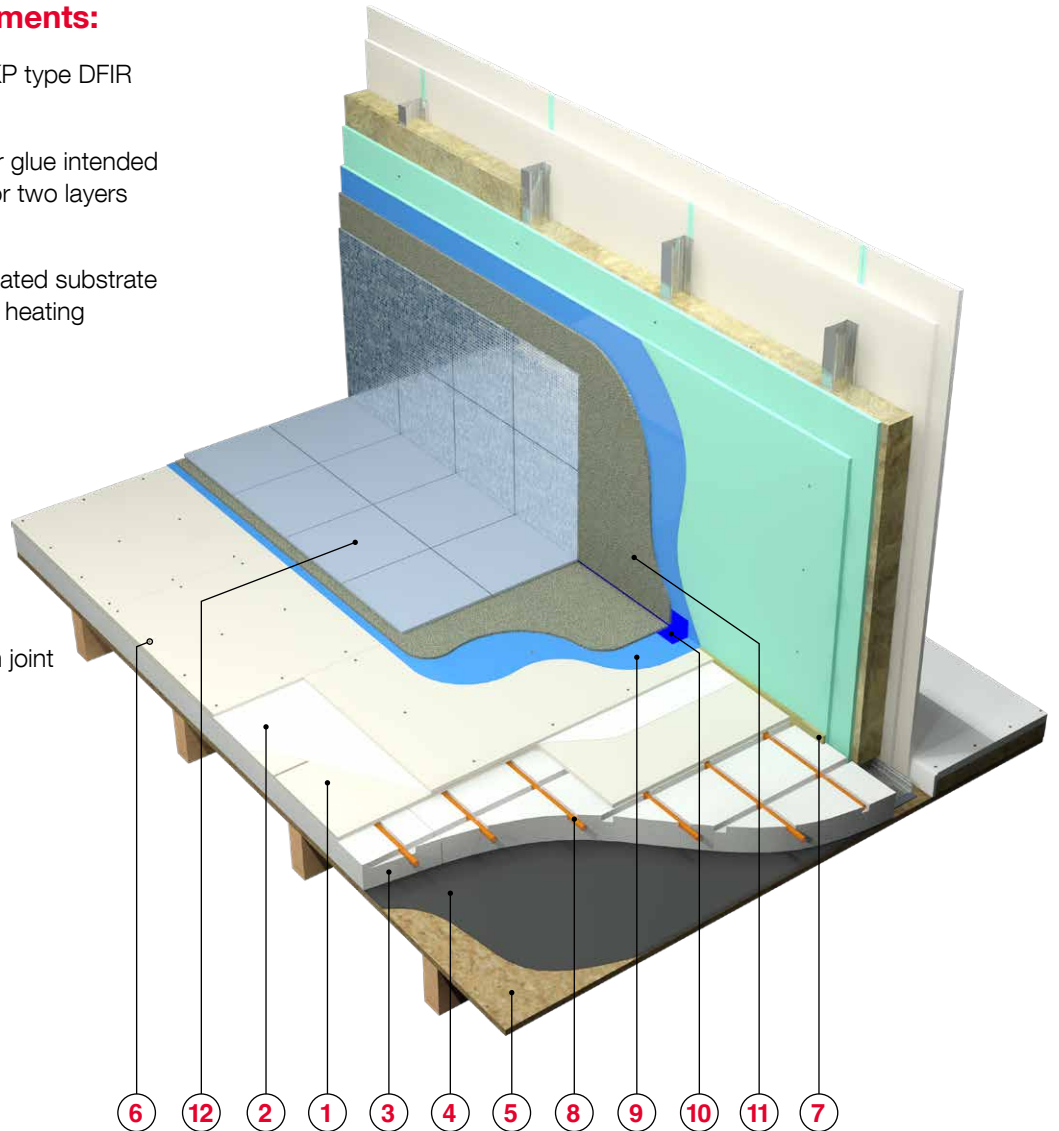
## Dry screed in bathrooms

NORGIPS plasterboard floor screed can be used in rooms such as bathrooms and kitchens. Underfloor heating systems can be installed under the panels.

Ceramic tiles can also be laid directly on NORGIPS plasterboards. However, the surface should be protected with a liquid film beforehand.

### NORGIPS solution elements:

- 1 Floor plasterboard NORGIPS KP type DFIR th. 12,5 mm
- 2 NORGIPS Start gypsum filler or glue intended for linoleum, vinyl or parquet (for two layers of DFIR boards)
- 3 Insulating boards or a prefabricated substrate for the installation of underfloor heating
- 4 Optional moisture insulation with insulating felt or PE foil
- 5 Wooden ceiling
- 6 Norgips 3.5 x 25 mm wood screws or C 4/23 mm staples spaced max. every 30 cm
- 7 10 mm mineral wool expansion joint
- 8 Underfloor heating installation
- 9 Liquid foil
- 10 Anti-damp insulating tape
- 11 Ceramic tile adhesive
- 12 Ceramic tiles



# Assembly details

## Floor loading

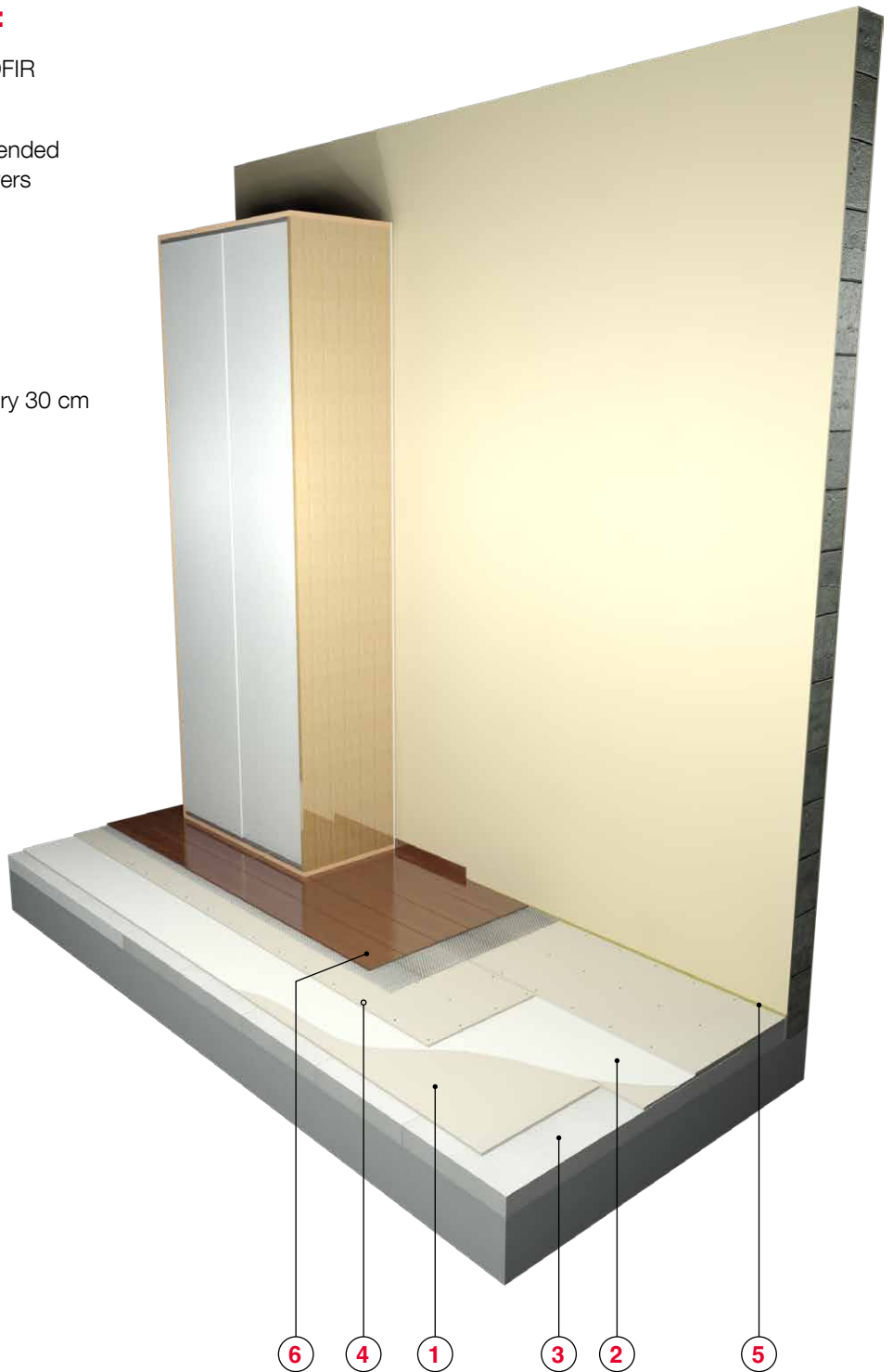
### NORGIPS solution elements:

- 1 Floor plasterboard NORGIPS KP type DFIR th. 12,5 mm
- 2 NORGIPS Start gypsum filler or glue intended for linoleum, vinyl or parquet (for two layers of DFIR boards)
- 3 A substrate made of insulating boards (e.g. mineral wool, polystyrene e.g. EPS 100 - 0.38)
- 4 Norgips 3.5 x 25 mm wood screws or C 4/23 mm staples spaced max. every 30 cm
- 5 10 mm mineral wool expansion joint
- 6 Floor finishing (e.g. panels + underlay)

After laying the NORGIPS dry screed, the prepared surface should be finished with appropriate flooring materials, such as carpets, laminate flooring, wood parquet, or ceramic tiles.

Standard household equipment, such as furniture or appliances, can be placed on the finished floor.

The maximum point load from this equipment (e.g., one cabinet leg) should not exceed 150 kg.



# NORGIPS®

**1 ESTONIA**  
**Tanel Kuusik**  
Country Manager  
+372 562 043 35  
tanel.kuusik@norgips.com

**2 LATVIA**  
**Artis Meikšāns**  
Country Manager  
+371 67 47 06 14  
artis.meiksans@norgips.com

**3 LITHUANIA**  
**Aurelijus Motiejūnas**  
Country Manager  
+370 69 810 088  
aurelijus.motiejunas@norgips.com

**4 CZECH REPUBLIC**  
**Pavel Holeš**  
Country Manager  
+420 732 213 409  
pavel.holes@norgips.com

**5 SLOVAKIA**  
**Aida Halák**  
Sales Representative  
+421 948 768 045  
aida.halak@norgips.com

**6 HUNGARY**  
**Tamás Horváth**  
Country Manager Hungary  
+36 20 917 2520  
tamas.horvath@norgips.com

**7 CROATIA**  
**Denis Halas**  
Sales Representative  
+48 695 230 568  
denis.halas@norgips.com

**8 BOSNIA AND HERZEGOVINA**  
**Maria Mitova**  
Country Manager  
+359 (0) 885 713 267  
maria.mitova@norgips.com

**9 ROMANIA**  
**Nicolae Alexandrescu**  
Country Manager  
+40 726 502 134  
nicolae.alexandrescu@norgips.com

**Alexandru Pitac**  
Technical Advisor  
+40 756 125 288  
alexandru.pitac@norgips.com

**10/11 BULGARIA and SERBIA**  
**Maria Mitova**  
Country Manager  
+359 (0) 885 713 267  
maria.mitova@norgips.com

**Jānis Muižnieks**  
Sales Coordinator  
+371 26 549 917  
janis.muiznieks@norgips.com

**Andrej Litovčenko**  
Sales Coordinator  
+370 620 718 60  
andrej.litovcenko@norgips.com

**Jaroslav Slanina**  
Sales Representative  
+420 774 731 232  
jaroslav.slantina@norgips.com

**Gábor Donka**  
Technical Advisor  
+36 30 543 5498  
gabor.donka@norgips.com

**Cristian Roman**  
Product Manager  
+40 746 119 932  
cristian.roman@norgips.com

**Nikolay Kolev**  
Sales Representative  
+359 (0) 885 929 680  
nikolay.kolev@norgips.com

**Dariusz Nasiłowski**  
**Export Director CEE Region**  
+48 22 36 96 330  
dariusz.nasilowski@norgips.com



## COMPANY HEADQUARTERS IN WARSAW

**NORGIPS Sp. z o.o.**  
ul. Raclawicka 93  
02-634 Warszawa  
+48 22 36 96 330  
norgipspolska@norgips.com

2025

[www.norgips.eu](http://www.norgips.eu)