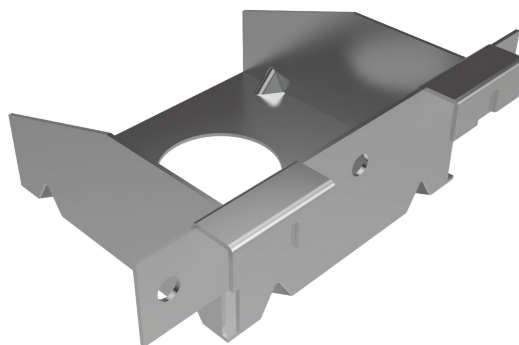


ONE-SIDED TRANSVERSE COUPLER

Coupler for CD 60 profiles

NORGIPS®



PRODUCT DESCRIPTION

One-sided transverse coupler made of zinc-coated 0.8 mm thick sheet metal. Modular product belonging to the accessories category. Metal framing component in accordance with PN-EN 13964:2014-05.

INTENDED USE

Designated for indoor use as an element of a drywall supporting structure. Designated for perpendicular joining of traverses built of CD 60 profiles with main CD 60 profiles when constructing dropped ceilings with single-level gridwork. For making a joint, two Norgips 3.5 x 9.5 mm sheet metal screws with self-tapping bits are used.

TECHNICAL PARAMETERS

| | |
|------------------------------|-------------------|
| Material | DX51D |
| Sheet metal gauge [mm] | 0,8 |
| Type of corrosion protection | Zinc-coated steel |
| Durability | Class B |
| Reaction-to-fire performance | A1 |



Plasterboards + Profiles + Compound + **Accessories** = NORGIPS Solution

ADVANTAGES

- **Modularity.** Tested as a part of NORGIPS plasterboard lining systems.
- **Safety of use.** Made of 0.8 mm sheet metal.
- **Fire safety.** Tested as a part of fire protection systems with declared fire resistance rating.
- **Marking.** Designations for easy product identification.

DIMENSIONS AND PACKAGING

| Bulk packaging | Number of units in a packaging [pcs] |
|----------------|---|
| Cardboard box | 100 |
| | 50 |

WSKAZÓWKI

The coupler requires indoor storage. Do not expose directly to weathering effects. Use the accessories in accordance with manufacturer's recommendations and design guidelines. Consult any other area of application with the design engineer.

INFORMACJE DODATKOWE

Standard PN-EN 13964:2014-05 Metal framing components for gypsum board systems. Definitions, requirements and test methods.

Declaration of Performance: available on the website www.norgips.pl

NORGIPS sp. z o.o.

ul. Krakowiaków 50,
02-255 Warsaw, PL
tel. + 48 605 338 181

www.norgips.eu

The data presented in this leaflet constitutes solely a product description. It represents a general guidance based on our knowledge and experience, not related to specific applications. Since our products are subjected to constant improvements and development, we reserve the

right to change their parameters without prior notice. The data presented herein cannot form a basis for any claims. If you have any questions, please contact the Norgips Technical Department / Norgips Representative.