

SHEET METAL SCREWS

NORGIPS®

Phosphate-coated sheet metal screws for affixing plasterboards to steel profiles



PRODUCT DESCRIPTION

Mechanical fasteners designated for affixing plasterboards to steel profiles made of 0.5 or 0.6 mm thick sheet metal. Black phosphate sheet metal screws.

INTENDED USE

Designated for affixing gypsum plasterboards to the structure of dry lining systems constructed of steel door frame profiles, in indoor applications. Designated for partition walls, wall claddings, curtain walls, suspended ceilings, ceiling linings, attic linings and other lining systems. The screw length should exceed the sheathing thickness by at least 10 mm.

TECHNICAL PARAMETERS

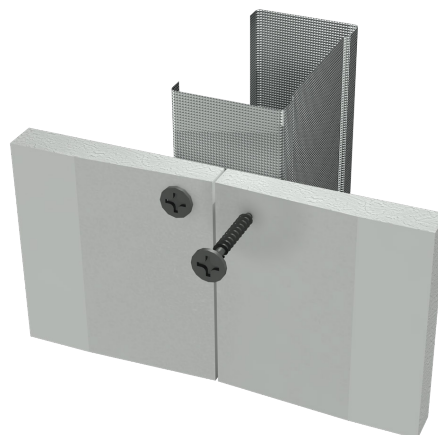
Corrosion resistance	Class 24
Type of corrosion protection	Phosphate coating
Screw type	TMN
Reaction-to-fire performance	A1
Pull-out resistance [N]	≤450
Flexural strength	Met
Harmonised standard	EN 14566+A1:2012



Plasterboards + Profiles + Compound + **Accessories** = NORGIPS Solution

ADVANTAGES

- **Modularity.** Tested as a part of NORGIPS dry lining systems.
- **Corrosion-protected.** Phosphate-coated sheet metal screws.
- **Fire safety.** Tested as a part of fire protection systems with declared fire resistance rating.
- **Profile marking.** To facilitate the product identification, designations are placed directly on the profiles.

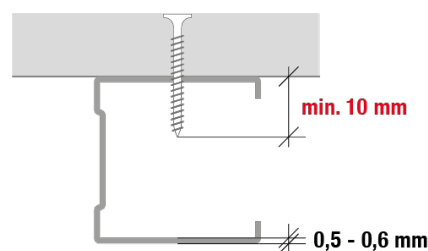


DIMENSIONS AND PACKAGING

Dimensions [mm]	Type of packaging	Qty in a packaging [pcs]	Qty in a bulk packaging [pcs]
3,5 x 25	Plastic box	1000	10000
3,5 x 25	Cardboard	1000	12000
3,5 x 35	Plastic box	1000	10000
3,5 x 35	Cardboard	1000	12000
3,5 x 45	Plastic box	500	5000
3,5 x 55	Plastic box	500	5000

NOTES FOR GUIDANCE

Store the sheet metal screws indoors. Do not expose directly to weathering effects. Use in accordance with manufacturer's recommendations and design guidelines. For all other uses, consult the design engineer.



ADDITIONAL INFORMATION

Applicable standard: PN-EN 14566+A1:2012 Mechanical fasteners for gypsum plasterboard systems. Definitions, requirements and test methods.

Declaration of Performance: available on the website www.norgips.pl

NORGIPS sp. z o.o.

ul. Krakowiaków 50,
02-255 Warsaw, PL
tel. + 48 605 338 181

www.norgips.eu

The data presented in this leaflet constitutes solely a product description. It represents a general guidance based on our knowledge and experience, not related to specific applications. Since our products are subjected to constant improvements and development, we reserve the

right to change their parameters without prior notice. The data presented herein cannot form a basis for any claims. If you have any questions, please contact the Norgips Technical Department / Norgips Representative.