

**NORGIPS®**



**SHAFT WALLS  
& WALL LININGS**



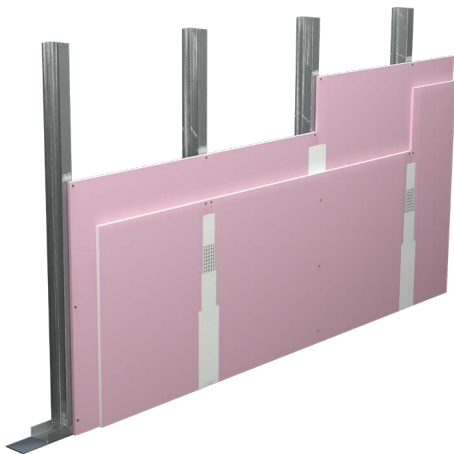
Modern construction presents contractors with increasingly greater challenges, requiring solutions that combine functionality, aesthetics, and durability. In response to these needs, ready-made drywall solutions have been developed, revolutionizing the way interiors are designed and executed. In this catalog, we present comprehensive NORGIPS solutions for shaft walls and wall linings, designed with the highest standards of quality and safety in mind.

The NORGIPS brand is synonymous with reliability and innovation in the field of drywall systems. Shaft walls, as a key element of a building's technical infrastructure, and wall linings, which give interiors a modern character, are solutions that combine ease of installation, durability, and aesthetics. We invite you to explore our catalog, where we present the construction of shaft walls and wall linings from the ground up. We believe it will serve as both inspiration and support for many contractors in executing even the most demanding projects.



How to read  
**NORGIPS shaft wall & wall linings**

**SO – Shaft Wall**



**OS – Wall Lining**



**SOLUTION CODE:**

<b>SO –</b>	<b>2x</b>	<b>12,5</b>	<b>GKF DF /</b>	<b>CW75</b>	<b>W</b>
<b>OS –</b>	<b>2x</b>	<b>12,5</b>	<b>GKB A /</b>	<b>CD 60</b>	<b>W</b>
<b>OS –</b>	<b>1x</b>	<b>12,5</b>	<b>GKB A /</b>	<b>KAP</b>	

**W** – mineral wool filling

**Construction:**

**CW75** – profiles CW+UW

**CD60** – profiles CD60+UD30+ES Hangers

**KAP** – hat profiles

**NORGIPS plasterboard:**

**GKB A** – standard

**GKBI H2** – impregnated

**GKF DF** – fire-resistant

**GKFI DFH2** – fire-resistant, impregnated

**ACO A** – acoustic

**DFH2IRE** – acoustic, fire-resistant, impregnated, impact resistant

**12,5** – plasterboard thickness [mm]

**2x** – number of plasterboard layers

**Solution prefix:**

**SO** – shaft wall

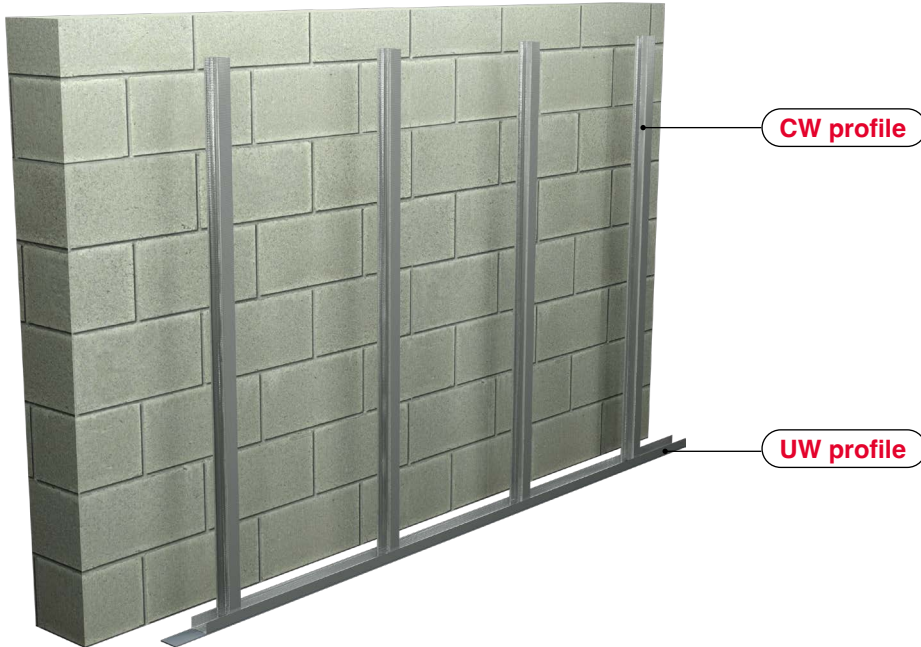
**OS** – wall lining

# NORGIPS shaft wall & wall lining construction types

## Shaft wall construction (SO)

**CW/UW 50/75/100 profiles**

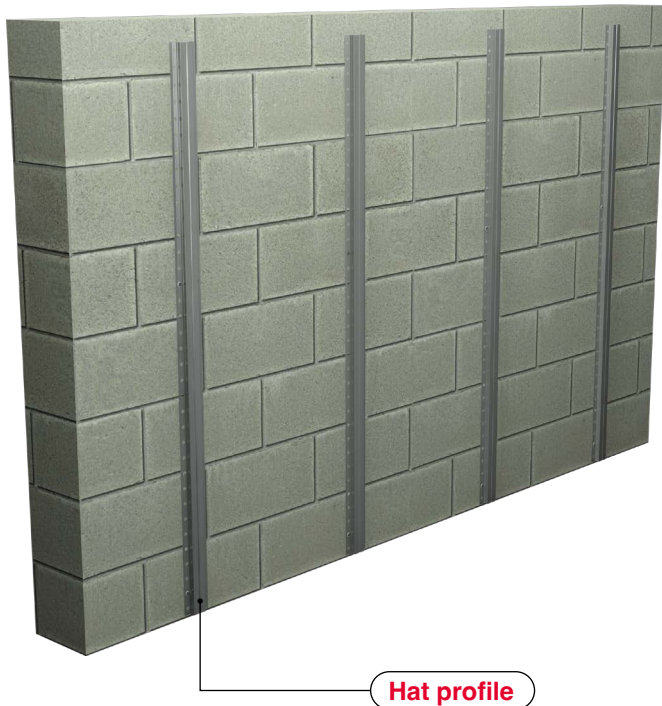
Construction thickness: 50/75/100 mm



## Wall Lining construction (OS)

**Hat profiles**

Construction thickness: 15 mm



**CD60 profiles**

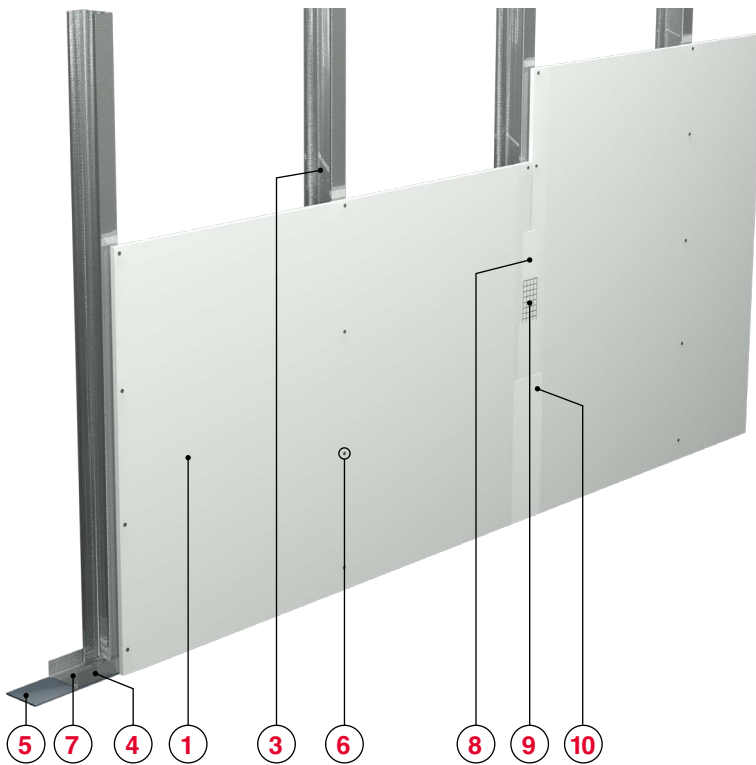
Construction thickness: min. 30 mm



# Shaft wall – SO

## Solution principles

### Standard solution



### NORGIPS solution elements:

- ① NORGIPS plasterboard
- ② NORGIPS DUO lining (type A + Special board)
- ③ NORGIPS CW stud
- ④ NORGIPS UW runner
- ⑤ NORGIPS sealing tape
- ⑥ NORGIPS screws
- ⑦ Anchor min.  $\varnothing 6 \times 40$  mm
- ⑧ Gypsum filler NORGIPS Start or ready-mix NORGIPS Start & Finish / NORGIPS Light Ready Mix
- ⑨ NORGIPS reinforcing tape
- ⑩ Ready-mixed finishing compound NORGIPS Extra Finish, ready-mix NORGIPS Start & Finish / NORGIPS Light Ready Mix, NORGIPS Finish MEGA / NORGIPS Easy Finish or gypsum filler NORGIPS Finish
- ⑪ Mineral wool

### DUO solution



# 50 technical properties scope



**Fire  
resistance**



**Acoustic  
insulation  $\Delta R_w^*$**



**Wall  
height**



**Wall  
thickness**

**Shaft wall**



**1x  
plasterboard  
layer**

max. 15  
EI/REI

up to  
12 dB

2,3 – 4,8 m    63 – 115 mm

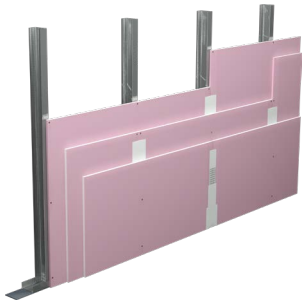


**2x  
plasterboard  
layer**

max. 60  
EI/REI

up to  
12 dB

3,0 – 5,1 m    75 – 130 mm

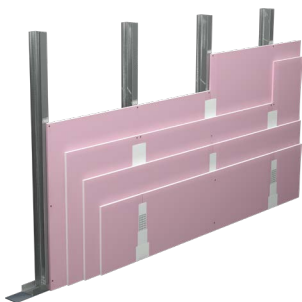


**3x  
plasterboard  
layer**

max. 90  
EI/REI

up to  
12 dB

3,1 – 5,9 m    88 – 140 mm



**4x  
plasterboard  
layer**

max. 120  
EI/REI

up to  
12 dB

3,1 – 5,9 m    105 – 155 mm

**Unlock NORGIPS Performance**  
Explore Our Shaft Walls Selector!

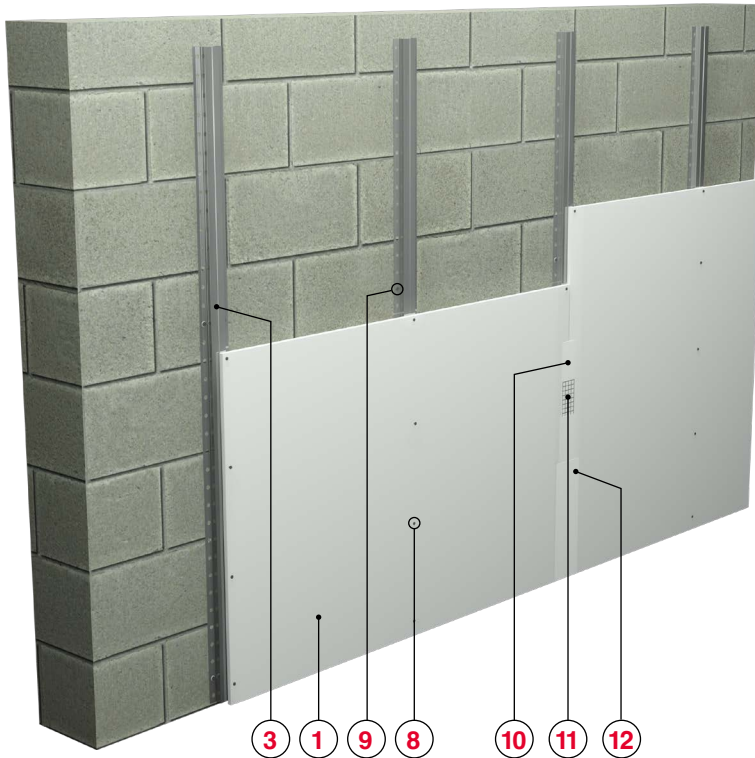


\* Estimated increase in sound insulation according to DIN 4109

# Wall linings – OS

solution principles (Hat profiles / CD60 construction)

## Standard solution



### NORGIPS solution elements:

- ① NORGIPS plasterboard
- ② NORGIPS DUO lining (type A + Special board)
- ③ NORGIPS Hat profile
- ④ NORGIPS CD60 profile
- ⑤ NORGIPS UD30 runner
- ⑥ NORGIPS ES hanger
- ⑦ NORGIPS sealing tape
- ⑧ NORGIPS screws
- ⑨ Anchor min.  $\varnothing 6 \times 40$  mm
- ⑩ Gypsum filler NORGIPS Start or ready-mix NORGIPS Start & Finish / NORGIPS Light Ready Mix
- ⑪ NORGIPS reinforcing tape
- ⑫ Ready-mixed finishing compound NORGIPS Extra Finish, ready-mix NORGIPS Start & Finish / NORGIPS Light Ready Mix, NORGIPS Finish MEGA / NORGIPS Easy Finish or gypsum filler NORGIPS Finish
- ⑬ Mineral wool

## DUO solution



# OS technical properties scope



**Fire  
resistance**



**Acoustic  
insulation  $\Delta R_w^*$**



**Wall  
height**



**Wall  
thickness**

**Wall lining**



**1x  
plasterboard  
layer**

max. 15  
EI/REI

up to  
12 dB

12 m

28 – 140 mm



**2x  
plasterboard  
layer**

max. 60  
EI/REI

up to  
12 dB

12 m

40 – 155 mm



**3x  
plasterboard  
layer**

max. 90  
EI/REI

up to  
12 dB

12 m

53 – 165 mm



**4x  
plasterboard  
layer**

max. 120  
EI/REI

up to  
12 dB

12 m

70 – 180 mm

**Unlock NORGIPS Performance**  
Explore Our Wall Linings Selector!



\* Estimated increase in sound insulation according to DIN 4109

# **Unmatched Fire Safety: Tested from Both Sides**

## **At NORGIPS, we prioritize your safety.**

Our shaft wall systems undergo rigorous, comprehensive fire testing from both critical sides:



**From the Shaft Side:**  
Simulating fire originating within the shaft.

**From the Plasterboard Side:**  
Replicating fire spreading from the room.

These dual-sided tests confirm that NORGIPS solutions maintain structural integrity and fire compartmentation, regardless of fire origin. Choose NORGIPS for proven, dual-sided fire protection that exceeds industry standards.

# Virtual Tour with NORGIPS

Discover the world of NORGIPS in 3D and take a virtual tour of the real investment!

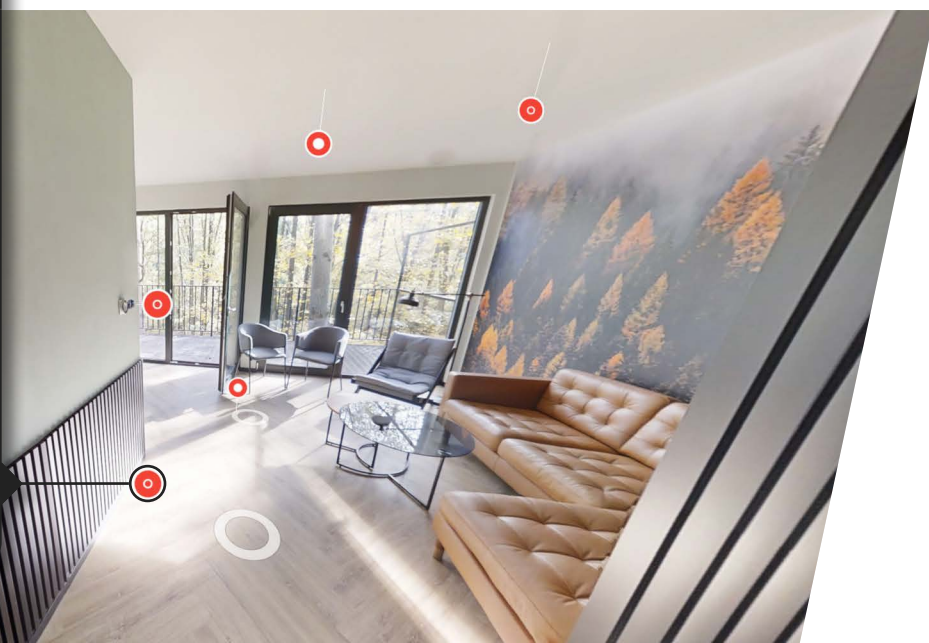
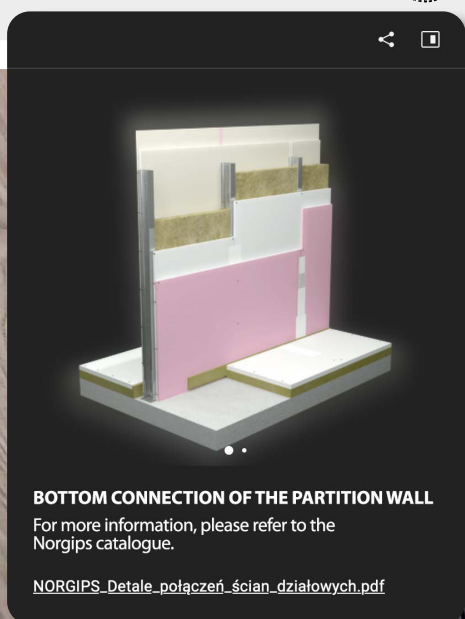
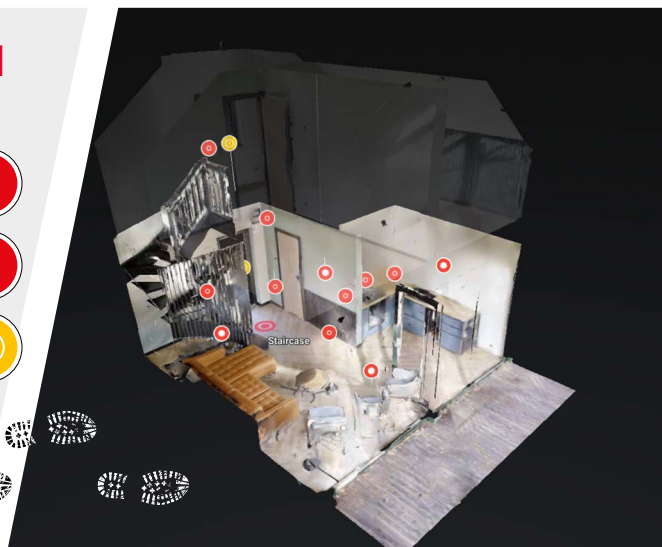
By choosing this path you can find **NORGIPS solutions** and **details of their installation**.

We recommend that discerning walkers take advantage of the walkthrough to **the execution phase of the building**.

The whole thing is perfectly complemented by the beauty of Polish nature and landscape...



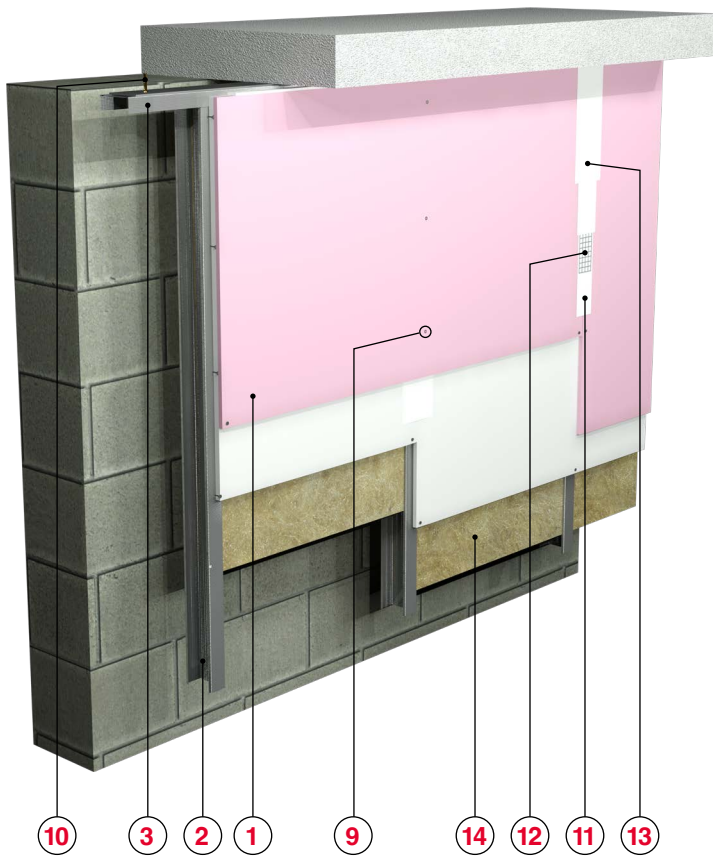
Have a nice trip!



Scan the QR code and immerse yourself in a 3D virtual tour

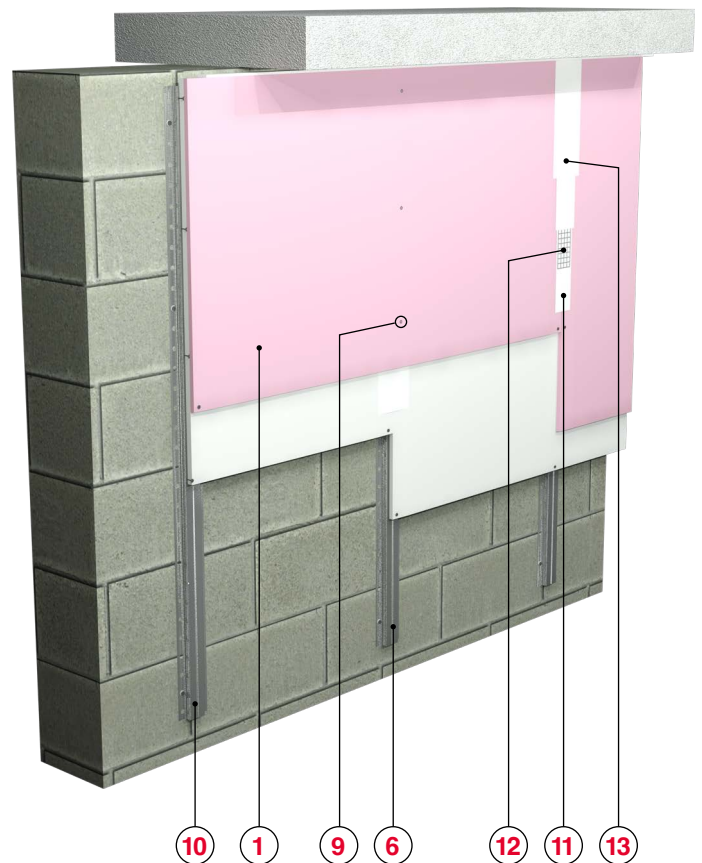
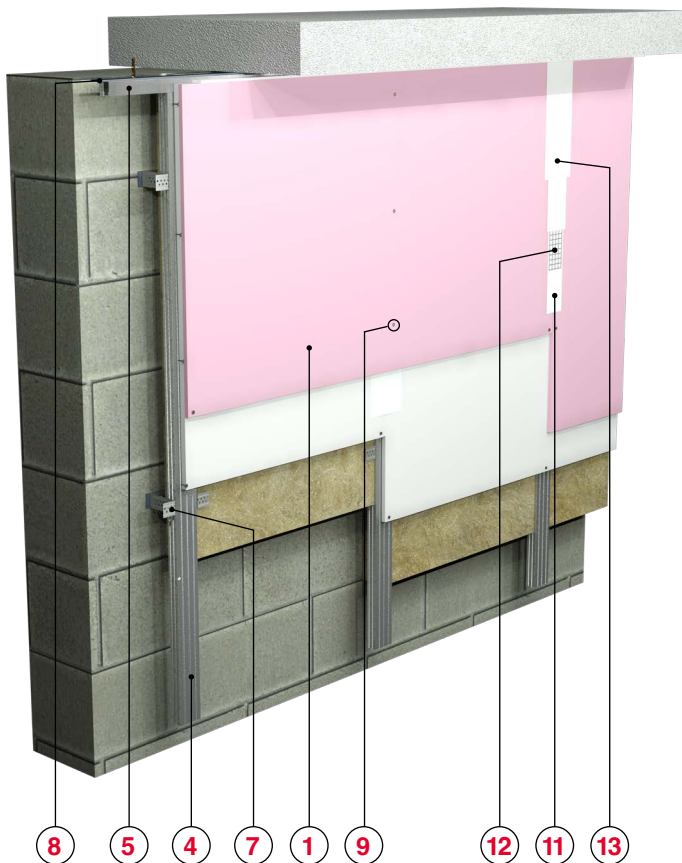
# Assembly details

## Upper joints



### NORGIPS solution elements:

- ① NORGIPS plasterboard lining
- ② NORGIPS CW profile
- ③ NORGIPS UW profile
- ④ NORGIPS CD60 profile
- ⑤ NORGIPS UD30 runner
- ⑥ NORGIPS Hat profile
- ⑦ NORGIPS ES hanger
- ⑧ NORGIPS sealing tape
- ⑨ NORGIPS screws
- ⑩ Anchor min.  $\varnothing 6 \times 40$  mm
- ⑪ Gypsum filler NORGIPS Start or ready-mix NORGIPS Start & Finish / NORGIPS Light Ready Mix
- ⑫ NORGIPS reinforcing tape
- ⑬ Ready-mixed finishing compound NORGIPS Extra Finish, ready-mix NORGIPS Start & Finish / NORGIPS Light Ready Mix, NORGIPS Finish MEGA / NORGIPS Easy Finish or gypsum filler NORGIPS Finish
- ⑭ Mineral wool



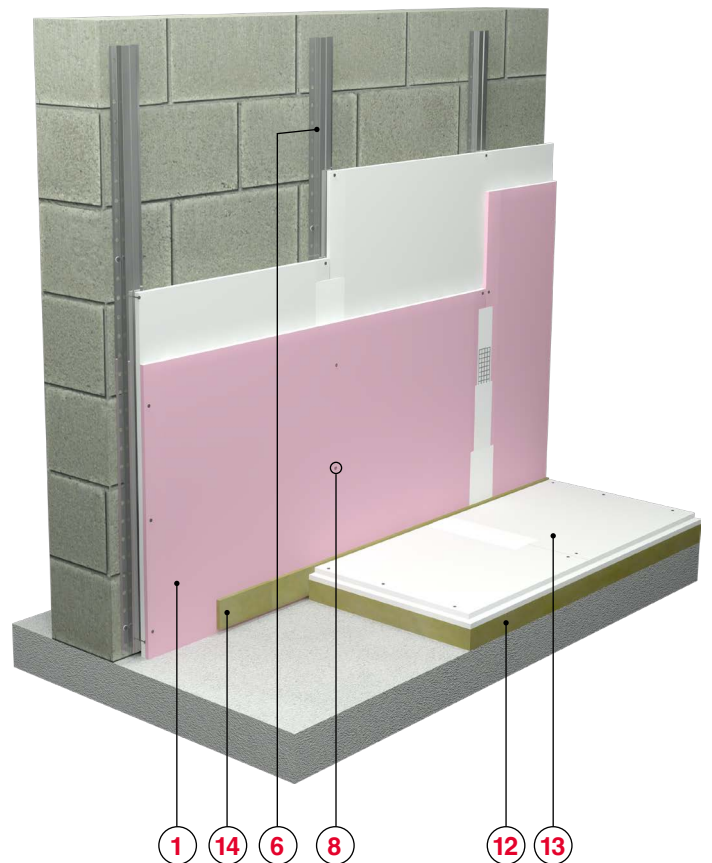
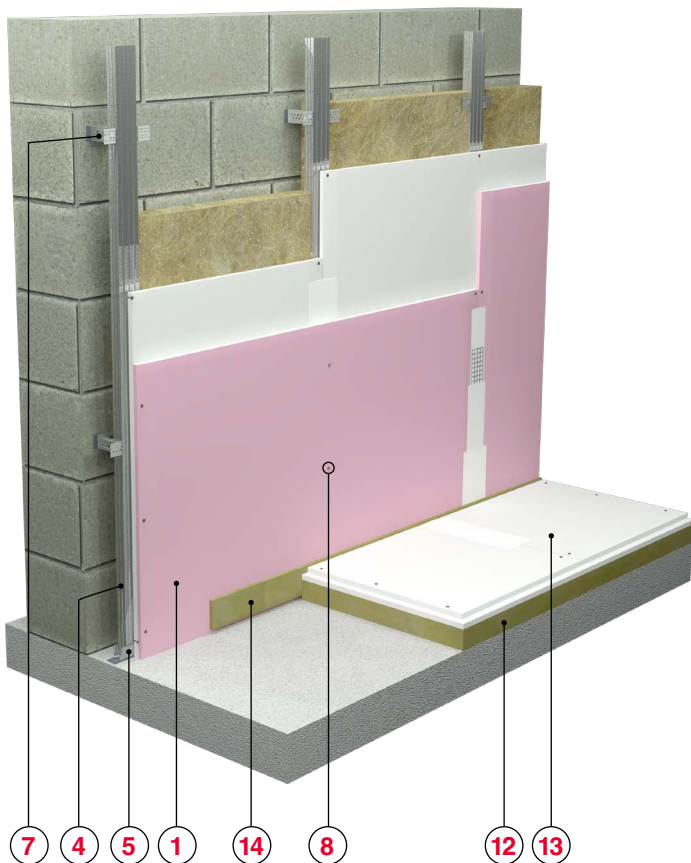
# Assembly details

## Lower joints



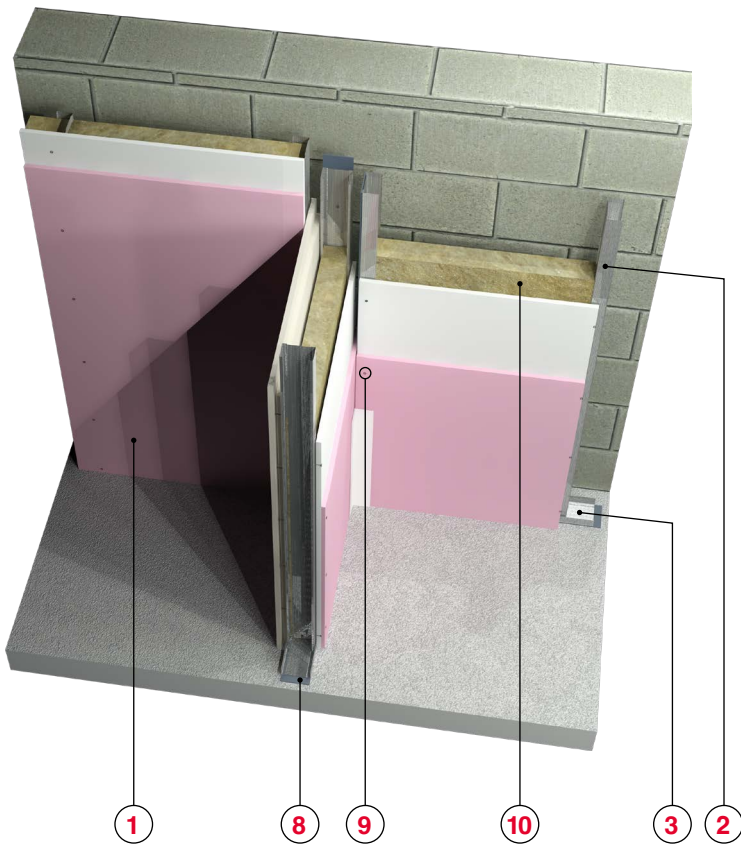
### NORGIPS solution elements:

- ① NORGIPS plasterboard lining
- ② NORGIPS CW profile
- ③ NORGIPS UW profile
- ④ NORGIPS CD60 profile
- ⑤ NORGIPS UD30 runner
- ⑥ NORGIPS Hat profile
- ⑦ NORGIPS ES hanger
- ⑧ NORGIPS screws
- ⑨ Gypsum filler NORGIPS Start or ready-mix  
NORGIPS Start & Finish / NORGIPS Light Ready Mix
- ⑩ NORGIPS reinforcing tape
- ⑪ Ready-mixed finishing compound NORGIPS  
Extra Finish, ready-mix, NORGIPS Start & Finish /  
NORGIPS Light Ready Mix, NORGIPS Finish MEGA /  
NORGIPS Easy Finish or gypsum filler NORGIPS Finish
- ⑫ Mineral wool
- ⑬ Dry screed floor panels
- ⑭ Dry screed floor circumferential insulation



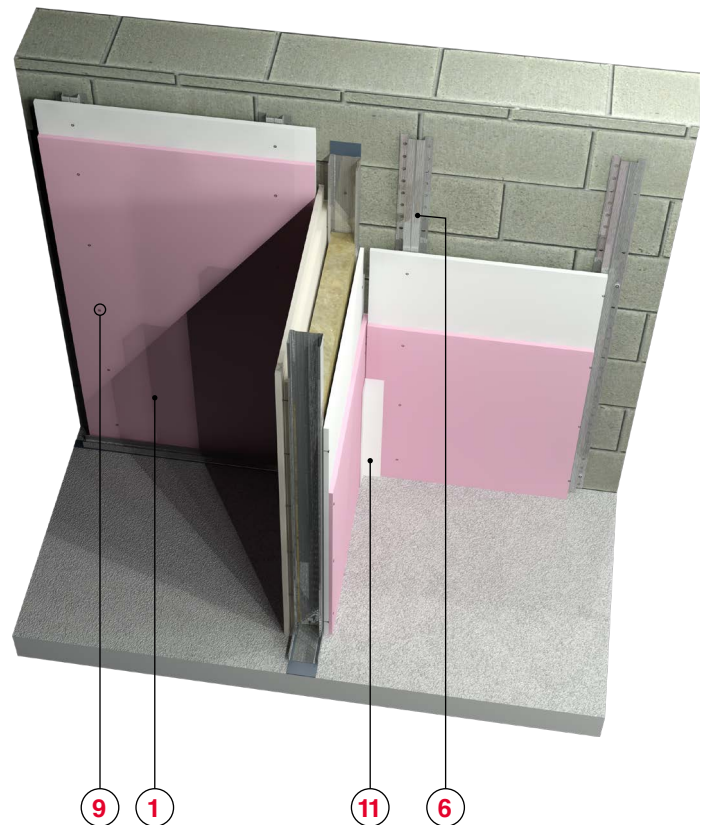
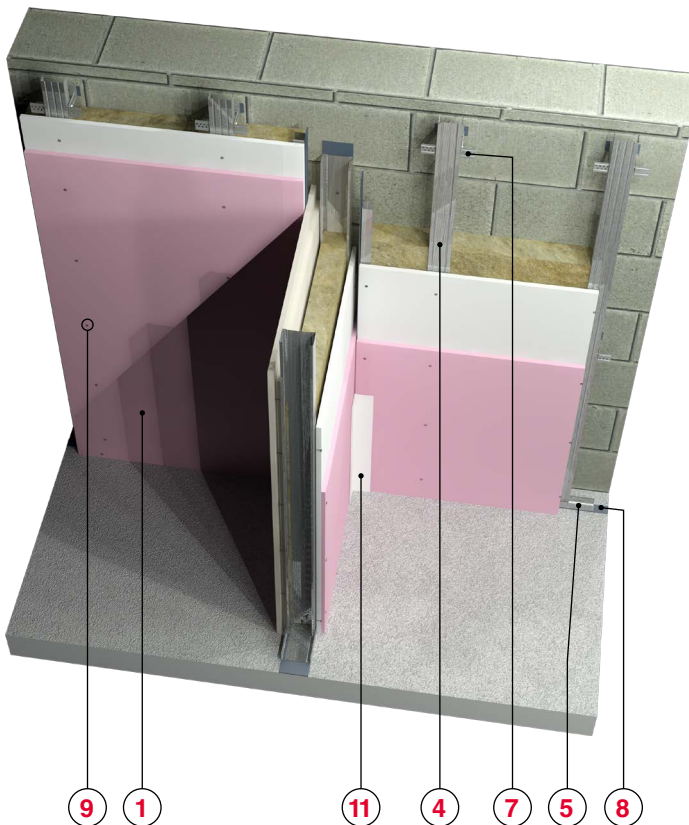
# Assembly details

## Type T joints



### NORGIPS solution elements:

- ① NORGIPS plasterboard lining
- ② NORGIPS CW profile
- ③ NORGIPS UW profile
- ④ NORGIPS CD60 profile
- ⑤ NORGIPS UD30 runner
- ⑥ NORGIPS Hat profile
- ⑦ NORGIPS ES hanger
- ⑧ NORGIPS sealing tape
- ⑨ NORGIPS screws
- ⑩ Mineral wool
- ⑪ Reinforcing tape



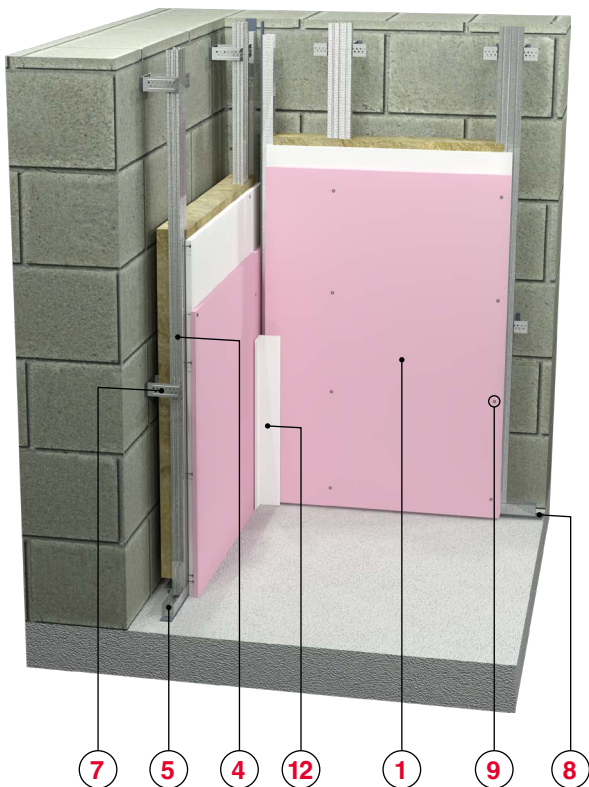
# Assembly details

## Type L joints – inner corner



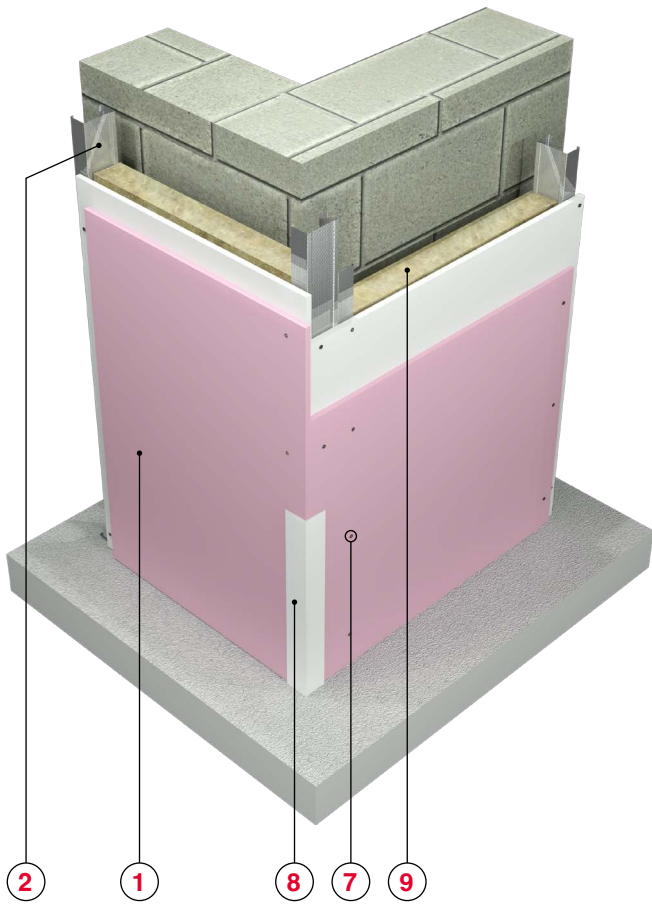
### NORGIPS solution elements:

- ① NORGIPS plasterboard lining
- ② NORGIPS CW profile
- ③ NORGIPS UW profile
- ④ NORGIPS CD60 profile
- ⑤ NORGIPS UD30 runner
- ⑥ NORGIPS Hat profile
- ⑦ NORGIPS ES hanger
- ⑧ NORGIPS sealing tape
- ⑨ NORGIPS screws
- ⑩ Gypsum filler NORGIPS Start or ready-mix  
NORGIPS Start & Finish / NORGIPS Light Ready Mix
- ⑪ Mineral wool
- ⑫ Reinforcing tape



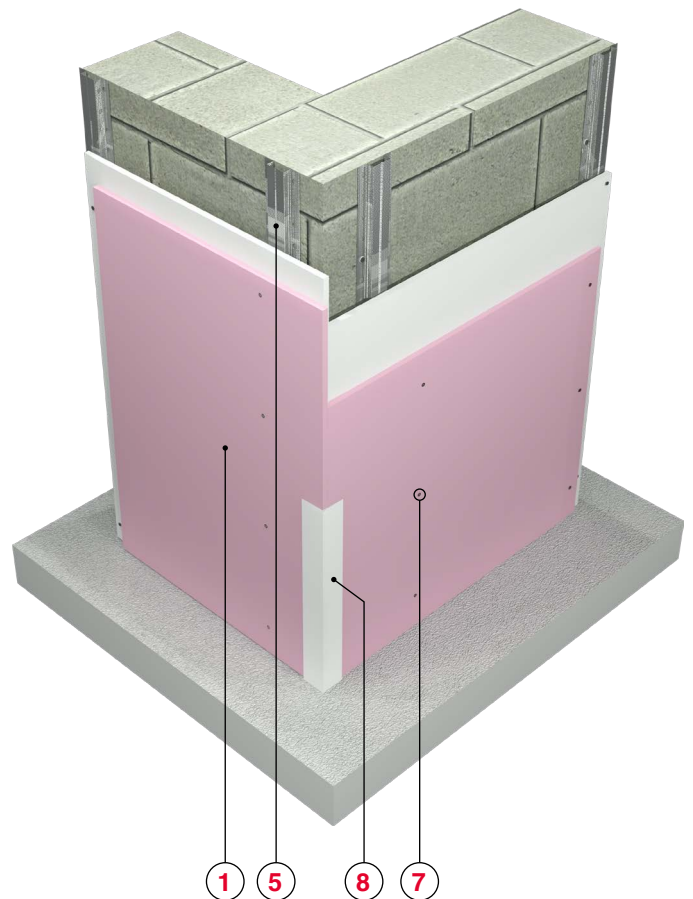
# Assembly details

## Type L joints – outer corner



### NORGIPS solution elements:

- ① NORGIPS plasterboard lining
- ② NORGIPS CW profile
- ③ NORGIPS CD60 profile
- ④ NORGIPS UD30 runner
- ⑤ NORGIPS Hat profile
- ⑥ NORGIPS ES hanger
- ⑦ NORGIPS screws
- ⑧ Reinforcing tape
- ⑨ Mineral wool

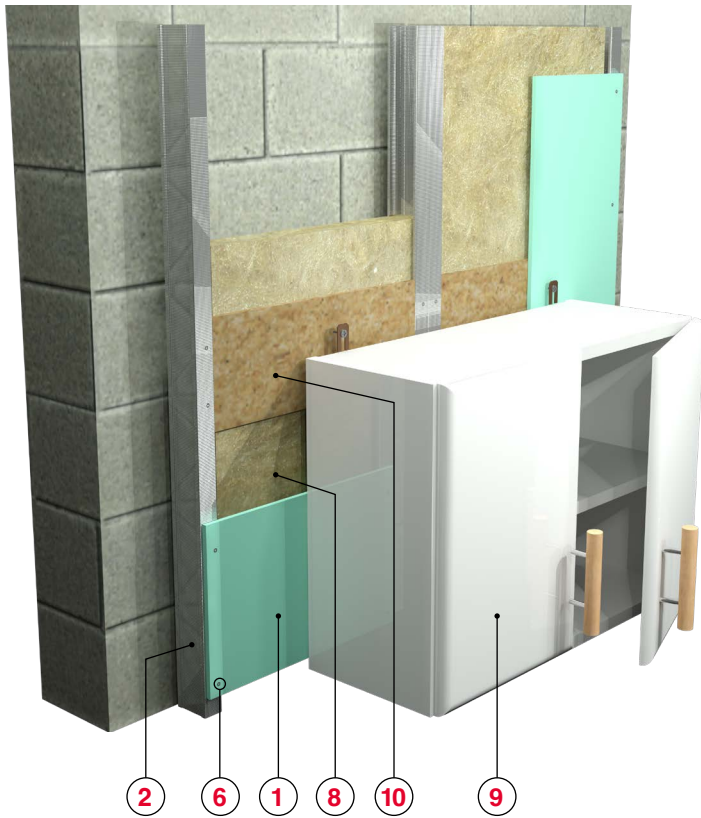






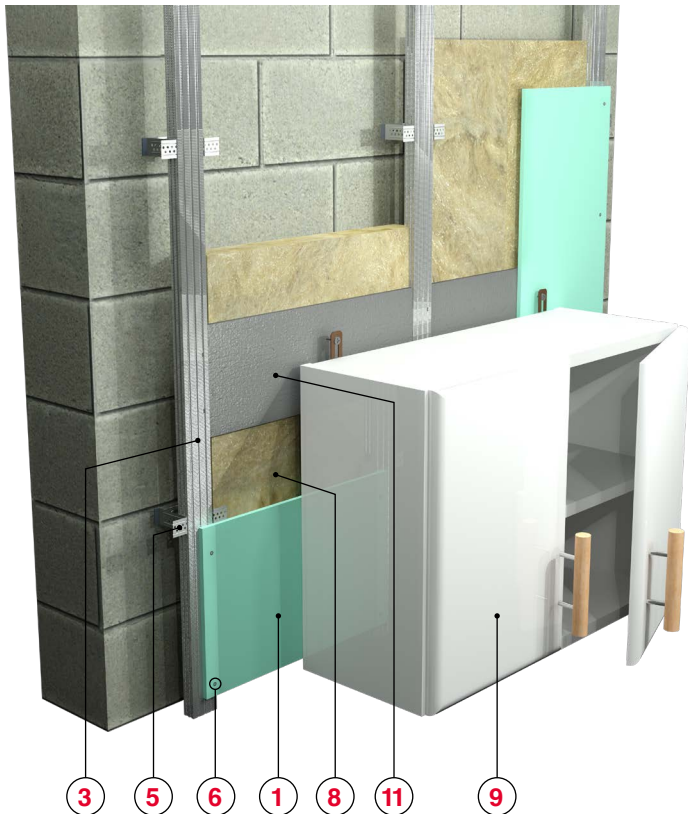
# Assembly details

## Cabinets hanging



### NORGIPS solution elements:

- ① NORGIPS plasterboard lining
- ② NORGIPS CW profile
- ③ NORGIPS CD60 profile
- ④ NORGIPS Hat profile
- ⑤ NORGIPS ES hanger
- ⑥ NORGIPS screws
- ⑦ Anchor min.  $\varnothing 6 \times 40$  mm
- ⑧ Mineral wool
- ⑨ Cabinet
- ⑩ Reinforcement eg. OSB board (1,5 cm th.)
- ⑪ Metal sheet reinforcement



# Assembly details

## Cabinets hanging



Appropriate solutions must be selected accordingly to the loads, with respect to the structure type, sheathing thickness, and any possible structure, or plasterboard sheathing reinforcement.

The following guidelines refer to the loads presented in kilograms per a metre of wall length and to the loads resulting from any installed sanitation and hygiene, or heating equipment, or cabinets, whose centre of gravity is located more than 30 cm from the wall surface. The number of fasteners must be determined taking into account the thickness and type of the installed sheathing, the weight of the installed element, and the load-bearing capacity of the fasteners.

Maximum load	up to 40 kg/lm	up to 70 kg/lm <sup>1</sup>	up to 150 kg/lm	above 150 kg/lm
Load type example	e.g. light decorative and interior design elements, shelves or cabinets	e.g. shelves or cabinets	e.g. sanitary fixtures, such as frame + hanging toilet bowl, boiler, washbasin	special solutions required independent sub-structure to transfer additional loads
Sheathing thickness	Single board layer thickness $\geq 12.5$ mm	double sheathing of boards thickness $\geq 12.5$ mm		
Type of structure	standard system structure			
Reinforcement type	none	none	UA profile + frame for installation of e.g. wall hung toilet bowl / reinforcement of sheathing <sup>2</sup>	

### Clarification:

<sup>1</sup> For the wall lining solutions and for the double-row wall structures not reinforced with brackets it is necessary to provide structural reinforcement of UA profiles.

<sup>2</sup> Local sheathing reinforcement selected individually by the system provider.

# Wall lining construction procedure

## Assembly stages

### STAGE I

#### Installing perimeter profiles (UD30) and ES hangers

- 1 Mark out the wall lining position against the existing wall in a room using e.g. a laser gauge by tracing the line of the perimeter profiles on the floor, walls and ceiling.
- 2 Apply an acoustic tape to UD30 profiles coming in contact with the ceiling or wall, which will enhance the sound insulation of the partition wall.
- 3 Mount UD30 profiles to the ceiling and floor substrate with anchors 6x40 mm (spacing every 80 cm).
- 4 Fix ES hangers to the wall in rows.



### STAGE II

#### Installing CD60 profiles

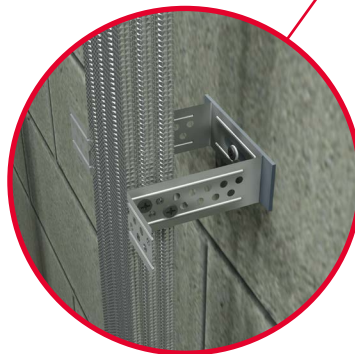
- 1 Adjust the necessary length of ES hangers and bend or cut the excess connector length.
- 2 Insert the CD60 profiles between the UD30 profiles. It's important to remember that the CD60 length should be 1,5 cm lower than the height of the room.
- 3 Join tightly CD60 profiles with ES hangers using 2x NORGIPS screws 3,5 x 9,5 mm per one side of the profile.



#### ATTENTION!

Norgips solutions installation should be performed after wet work is completed, after which the room should be ventilated or dried to reduce air humidity.

The installation of plasterboard and joint filling should be performed assuming that the room air temperature is no lower than +5°C and humidity does not exceed 70%.



# Wall lining construction procedure

## Assembly stages

### STAGE III

#### Installing wall insulation

- 1 Remove mineral wool from its packaging and spread on the substrate to let it expand.
- 2 Place the mineral wool between CD60 profiles.



### STAGE IV

#### Installing the NORGIPS plasterboard lining

- 1 Attach the first layer of boards to the CD60 profile structure using 3,5x25 mm tapping screws spaced every 75 cm.
- 2 Fill the joints between the first layer of boards with a joint filler.
- 3 Next, attach the second board layer using 3,5x35 mm tapping screws spaced every 25 cm.



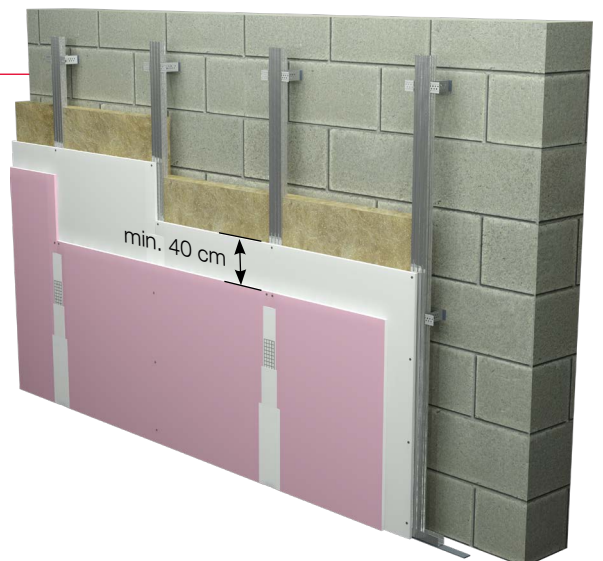
#### NOTE!

Successive board layers should be fixed alternately, ensuring a shift with one profile; board joints must not cross; the distance between shorter board edges should be at least 40 cm.

### STAGE V

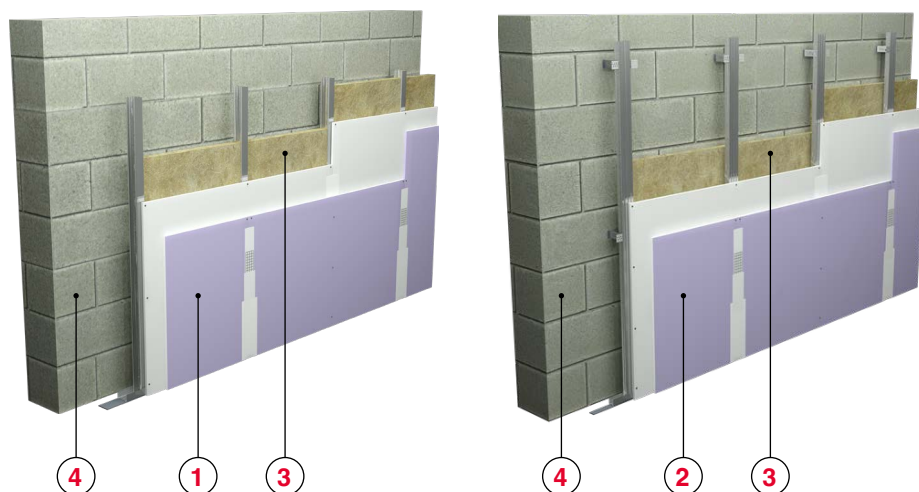
#### Final pointing and filling

- 1 Fill the second layer of boards with a joint filler and pointing tape.
- 2 Fill the joints and screws with a finishing joint filler. More information on joint filling is provided in section "JOINT FILLING LEVELS".
- 3 Buff all rough surfaces using a mechanical or manual polishing method.
- 4 After drying, the partition wall is ready for painting.



# Room silence

Shaft walls and Wall linings serve to increase the acoustic insulation of an existing wall partition. To achieve the highest acoustic insulation gains, it is recommended to use NORGIPS Acoustic type A or Acoustic Super type DFH2IRE acoustic plasterboards. The table presents the acoustic insulation gains  $\Delta R$  of the partition after the shaft wall and wall lining are constructed against a ceramic block wall.



- 1 NORGIPS Shaft wall (SO)
- 2 NORGIPS Wall lining (OS)
- 3 Mineral wool Knauf Insulation Akustik Board th. 50 mm
- 4 Base wall

Partition	Acoustic insulation $R_w$ [dB]	Acoustic insulation $RA_1$ [dB]	$\Delta R_w$ [dB]	$\Delta R_{A_1}$ [dB]	Min. thickness of NORGIPS solution [mm]
<b>Base wall:</b> Porotherm ceramic blocks, 250 mm thick	47	46	-	-	-
<b>ŚCIANA OSŁONOWA – SO</b>					
Base wall + <b>NORGIPS SO-1x12,5 ACO A/CW 50 W</b> NORGIPS lining: 1x12,5 <b>Acoustic typ A</b>	67	65	20	19	62,5
Base wall + <b>NORGIPS SO-1x12,5 DFH2IRE A/CW 50 W</b> NORGIPS lining: 1x12,5 <b>Acoustic Super typ DFH2IRE</b>	69	66	22	20	62,5
Base wall + <b>NORGIPS SO-2x12,5 ACO A/CW 50 W</b> NORGIPS lining: 2x12,5 <b>Acoustic typ A</b>	72	69	25	23	75
Base wall + <b>NORGIPS SO-2x12,5 DFH2IRE A/CW 50 W</b> NORGIPS lining: 2x12,5 <b>Acoustic Super typ DFH2IRE</b>	73	70	26	24	75
Base wall + <b>NORGIPS DUO SO-2x12,5 GKB A + ACO A/CW 50 W</b> NORGIPS lining DUO: 1x12,5 GKB typ A + 1x12,5 <b>Acoustic typ A</b>	71	67	24	21	75
Base wall + <b>NORGIPS SO-2x12,5 GKB A + DFH2IRE A/CW 50 W</b> NORGIPS lining DUO: 1x12,5 GKB typ A + 1x12,5 <b>Acoustic Super typ DFH2IRE</b>	72	68	25	22	75
<b>OKŁADZINA ŚCIENNA – OS</b>					
Base wall + <b>NORGIPS OS-1x12,5 ACO A/CW 50 W</b> NORGIPS lining: 1x12,5 <b>Acoustic typ A</b>	63	60	16	14	62,5
Base wall + <b>NORGIPS OS-1x12,5 DFH2IRE A/CW 50 W</b> NORGIPS lining: 1x12,5 <b>Acoustic Super typ DFH2IRE</b>	67	63	20	17	62,5
Base wall + <b>NORGIPS OS-2x12,5 ACO A/CW 50 W</b> NORGIPS lining: 2x12,5 <b>Acoustic typ A</b>	68	64	21	18	75
Base wall + <b>NORGIPS OS-2x12,5 DFH2IRE A/CW 50 W</b> NORGIPS lining: 2x12,5 <b>Acoustic Super typ DFH2IRE</b>	72	68	25	22	75
Base wall + <b>NORGIPS DUO OS-2x12,5 GKB A + ACO A/CW 50 W</b> NORGIPS lining DUO: 1x12,5 GKB typ A + 1x12,5 <b>Acoustic typ A</b>	68	65	21	19	75
Base wall + <b>NORGIPS OS-2x12,5 GKB A + DFH2IRE A/CW 50 W</b> NORGIPS lining DUO: 1x12,5 GKB typ A + 1x12,5 <b>Acoustic Super typ DFH2IRE</b>	70	67	23	21	75

# Technical information

## Profiles used in the framework of the solution

Steel profiles made out of cold bent galvanized steel (the nominal thickness of the steel used: 0,55 mm or 0,6 mm).

	NORGIPS Profile	NORGIPS SUPER Profile
Tensile strenght [N/mm <sup>2</sup> ]	285	285
Reaction to fire performance	A1	A1
Sheet metal type	DX51D	DX51D
Sheet metal gauge [mm]	0,55 / 0,6	0,6
Zinc coating	Z140	Z275
Atmospheric corrosivity category	C1, C2	C3

## Fixing plasterboard to the framework

When fixing plasterboard to the construction make sure that used screws are longer than the board thickness or the total thickness of boards used in multi-layer linings by at least **10 mm**.

Check the screw selection for fixing plasterboards below:

Plasterboard lining thickness [mm]	Screw type
1x12,5	3,5x25 mm
1x15	3,5x25 mm
2x12,5	3,5x25 mm + 3,5x35 mm
2x15	3,5x25 mm + 3,5x45 mm
3x12,5	3,5x25 mm + 3,5x35 mm + 3,5x55 mm
3x15	3,5x25 mm + 3,5x45 mm + 3,5x55 mm
2x12,5 + 1x15	3,5x25 mm + 3,5x45 mm + 3,5x55 mm
2x15 + 2x12,5	3,5x25 mm + 3,5x45 mm + 3,5x55 mm + 4,2x70 mm



## Fire resistance

Typical fire resistance classes of NORGIPS shaft systems and wall linings depending on the type of used plasterboards.

NORGIPS plasterboard lining	Fire resistance class
GKF / GKFI type DF / DFH2 [mm]	
1 x 12,5	EI 15
1 x 15	EI 15
2 x 12,5	EI 45
2 x 15	EI 60
3 x 12,5	EI 60
1 x 15 + 2 x 12,5	EI 90
2 x 15 + 2 x 12,5	EI 120

# Technical information

## Maximum static wall heights

Wall surface and linear loads were assumed for the calculations. The surface loads represent the pressure difference on both sides of the wall. The loads apply to the following pressure ranges:

- up to 150 Pa
- from 150 to 200 Pa
- from 200 to 250 Pa

Wall linear loads reflect the pressure of people on the partition. Loads include:

- range 1 to 500 N / m – includes walls of rooms with few occupants, such as rooms in apartments, hotels, offices, hospitals and others used in a similar manner
- range 2 to 1000 N / m – includes walls of rooms with many occupants, such as large conference rooms, classrooms, lecture halls and others used in a similar way

The permissible maximum wall deflection is  $H/350$  (H – wall height).

## Maximum static wall heights – types of the framework



**CW** single construction, e.g. SO-1 x g-k CW50



**CW+CW** reinforced construction, e.g. SO-1 x g-k CW50+CW50

**Where:** SO – shaft wall / g-k – plasterboard / 2 x g-k – number of plasterboard layers

Single & double CW/UW construction	Profile spacing [mm]	Wall surface load [Pa]			Wall linear load [N/m]	
		150	200	250	500	1000
SO – 1 x g-k CW 50	600	2,35	2,14	1,98	2,35	1,98
SO – 1 x g-k CW 50	400	2,87	2,61	2,42	2,87	2,42
SO – 1 x g-k CW 50	300	3,38	3,07	2,85	3,38	2,85
SO – 1 x g-k CW 75	600	3,12	2,83	2,63	3,12	2,63
SO – 1 x g-k CW 75	400	3,55	3,22	2,99	3,55	2,99
SO – 1 x g-k CW 75	300	3,97	3,61	3,35	3,97	3,35
SO – 1 x g-k CW 100	600	4,08	3,71	3,44	4,08	3,44
SO – 1 x g-k CW 100	400	4,38	3,98	3,70	4,38	3,70
SO – 1 x g-k CW 100	300	4,68	4,25	3,95	4,68	3,95
SO – 2 x g-k CW 50	600	2,96	2,69	2,49	2,96	2,49
SO – 2 x g-k CW 50	400	3,40	3,09	2,87	3,40	2,87
SO – 2 x g-k CW 50	300	3,84	3,49	3,24	3,84	3,24
SO – 2 x g-k CW 75	600	4,08	3,71	3,44	4,08	3,44
SO – 2 x g-k CW 75	400	4,90	4,45	4,13	4,90	4,13
SO – 2 x g-k CW 75	300	5,71	5,19	4,82	5,71	4,82
SO – 2 x g-k CW 100	600	4,54	4,12	3,83	4,54	3,83
SO – 2 x g-k CW 100	400	5,45	4,95	4,59	5,45	4,59
SO – 2 x g-k CW 100	300	6,35	5,77	5,36	6,35	5,36
SO – 3 x g-k CW 50	600	3,11	2,82	2,62	3,11	2,62
SO – 3 x g-k CW 50	400	3,42	3,10	2,88	3,42	2,88
SO – 3 x g-k CW 50	300	4,10	3,72	3,46	4,10	3,46
SO – 3 x g-k CW 75	600	4,49	4,08	3,79	4,49	3,79
SO – 3 x g-k CW 75	400	4,94	4,49	4,17	4,94	4,17
SO – 3 x g-k CW 75	300	5,84	5,30	4,92	5,84	4,92
SO – 3 x g-k CW 100	600	4,62	4,20	3,90	4,62	3,90
SO – 3 x g-k CW 100	400	5,55	5,04	4,68	5,55	4,68
SO – 3 x g-k CW 100	300	6,47	5,88	5,46	6,47	5,46

Single & double CW/UW construction	Profile spacing [mm]	Wall surface load [Pa]			Wall linear load [N/m]	
		150	200	250	500	1000
SO – 1 x g-k CW 50+CW 50	600	2,89	2,63	2,44	2,89	2,44
SO – 1 x g-k CW 50+CW 50	400	3,47	3,16	2,93	3,47	2,93
SO – 1 x g-k CW 50+CW 50	300	4,05	3,68	3,42	4,05	3,42
SO – 1 x g-k CW 75+CW 75	600	3,85	3,50	3,25	3,85	3,25
SO – 1 x g-k CW 75+CW 75	400	4,24	3,85	3,58	4,24	3,58
SO – 1 x g-k CW 75+CW 75	300	4,43	4,03	3,74	4,43	3,74
SO – 1 x g-k CW 100+CW 100	600	4,80	4,37	4,05	4,80	4,05
SO – 1 x g-k CW 100+CW 100	400	5,77	5,24	4,86	5,77	4,86
SO – 1 x g-k CW 100+CW 100	300	6,25	5,67	5,27	6,25	5,27
SO – 2 x g-k CW 50+CW 50	600	3,40	3,09	2,87	3,40	2,87
SO – 2 x g-k CW 50+CW 50	400	3,91	3,55	3,30	3,91	3,30
SO – 2 x g-k CW 50+CW 50	300	4,08	3,71	3,44	4,08	3,44
SO – 2 x g-k CW 75+CW 75	600	4,33	3,94	3,66	4,33	3,66
SO – 2 x g-k CW 75+CW 75	400	4,83	4,39	4,08	4,83	4,08
SO – 2 x g-k CW 75+CW 75	300	5,63	5,12	4,75	5,63	4,75
SO – 2 x g-k CW 100+CW 100	600	5,13	4,67	4,33	5,13	4,33
SO – 2 x g-k CW 100+CW 100	400	5,90	5,36	4,98	5,90	4,98
SO – 2 x g-k CW 100+CW 100	300	7,19	6,53	6,06	7,19	6,06
SO – 3 x g-k CW 50+CW 50	600	3,57	3,24	3,01	3,57	3,01
SO – 3 x g-k CW 50+CW 50	400	4,11	3,73	3,46	4,11	3,46
SO – 3 x g-k CW 50+CW 50	300	4,29	3,89	3,61	4,29	3,61
SO – 3 x g-k CW 75+CW 75	600	4,98	4,53	4,20	4,98	4,20
SO – 3 x g-k CW 75+CW 75	400	5,73	5,21	4,83	5,73	4,83
SO – 3 x g-k CW 75+CW 75	300	6,23	5,66	5,25	6,23	5,25
SO – 3 x g-k CW 100+CW 100	600	5,95	5,41	5,02	5,95	5,02
SO – 3 x g-k CW 100+CW 100	400	7,14	6,49	6,02	7,14	6,02
SO – 3 x g-k CW 100+CW 100	300	7,74	7,03	6,52	7,74	6,52

# Joint filling levells



**Q1**

Filling screw openings and plasterboard joints (+ reinforcing tape)



**Q2**

Refilling screw openings and plasterboard joints – larger width (min. 25 cm)



**Q3**

Skimming of the whole surface of partition element (both joints and cardboard)



**Q4**

Additional skimming of the entire structure surface



# NEW REDY MIX COMPUND

## EASY FINISH

WITH  
EASY FINISH  
YOUR WORK  
GOES  
SMOOTHLY



- Very **easy application** and **high adhesion**
- Suitable for roller, spray and putty
- Easy to sand and has a very **smooth surface**

## ADVANTAGES



EASY  
APPLICATION



SMOOTH  
SURFACE



QUICK  
APPLICATION



SPRAY

**1 ESTONIA**  
**Tanel Kuusik**  
Country Manager  
+372 562 043 35  
tanel.kuusik@norgips.com

**2 LATVIA**  
**Artis Meikšāns**  
Country Manager  
+371 67 47 06 14  
artis.meiksans@norgips.com

**3 LITHUANIA**  
**Aurelijus Motiejūnas**  
Country Manager  
+370 69 810 088  
aurelijus.motiejunas@norgips.com

**4 CZECH REPUBLIC**  
**Pavel Holeš**  
Country Manager  
+420 732 213 409  
pavel.holes@norgips.com

**5 SLOVAKIA**  
**Aida Halák**  
Sales Representative  
+421 948 768 045  
aida.halak@norgips.com

**6 HUNGARY**  
**Tamás Horváth**  
Country Manager Hungary  
+36 20 917 2520  
tamas.horvath@norgips.com

**7 CROATIA**  
**Denis Halas**  
Sales Representative  
+48 695 230 568  
denis.halas@norgips.com

**8 BOSNIA AND HERZEGOVINA**  
**Maria Mitova**  
Country Manager  
+359 (0) 885 713 267  
maria.mitova@norgips.com

**9 ROMANIA**  
**Nicolae Alexandrescu**  
Country Manager  
+40 726 502 134  
nicolae.alexandrescu@norgips.com

**Alexandru Pitac**  
Technical Advisor  
+40 756 125 288  
alexandru.pitac@norgips.com

**10/11 BULGARIA and SERBIA**  
**Maria Mitova**  
Country Manager  
+359 (0) 885 713 267  
maria.mitova@norgips.com

**Jānis Muižnieks**  
Sales Coordinator  
+371 26 549 917  
janis.muiznieks@norgips.com

**Andrej Litovčenko**  
Sales Coordinator  
+370 620 718 60  
andrej.litovcenko@norgips.com

**Jaroslav Slanina**  
Sales Representative  
+420 774 731 232  
jaroslav.slantina@norgips.com

**Gábor Donka**  
Technical Advisor  
+36 30 543 5498  
gabor.donka@norgips.com

**Cristian Roman**  
Product Manager  
+40 746 119 932  
cristian.roman@norgips.com

**Nikolay Kolev**  
Sales Representative  
+359 (0) 885 929 680  
nikolay.kolev@norgips.com

**Dariusz Nasiłowski**  
**Export Director CEE Region**  
+48 22 36 96 330  
dariusz.nasilowski@norgips.com



## COMPANY HEADQUARTERS IN WARSAW

**NORGIPS Sp. z o.o.**  
ul. Raclawicka 93  
02-634 Warszawa  
+48 22 36 96 330  
norgipspolska@norgips.com

2025

[www.norgips.eu](http://www.norgips.eu)