

NORGIPS®



***Skeleton
and modular
buildings***
NORGIPS solutions

SKELETON AND MODULAR BUILDINGS

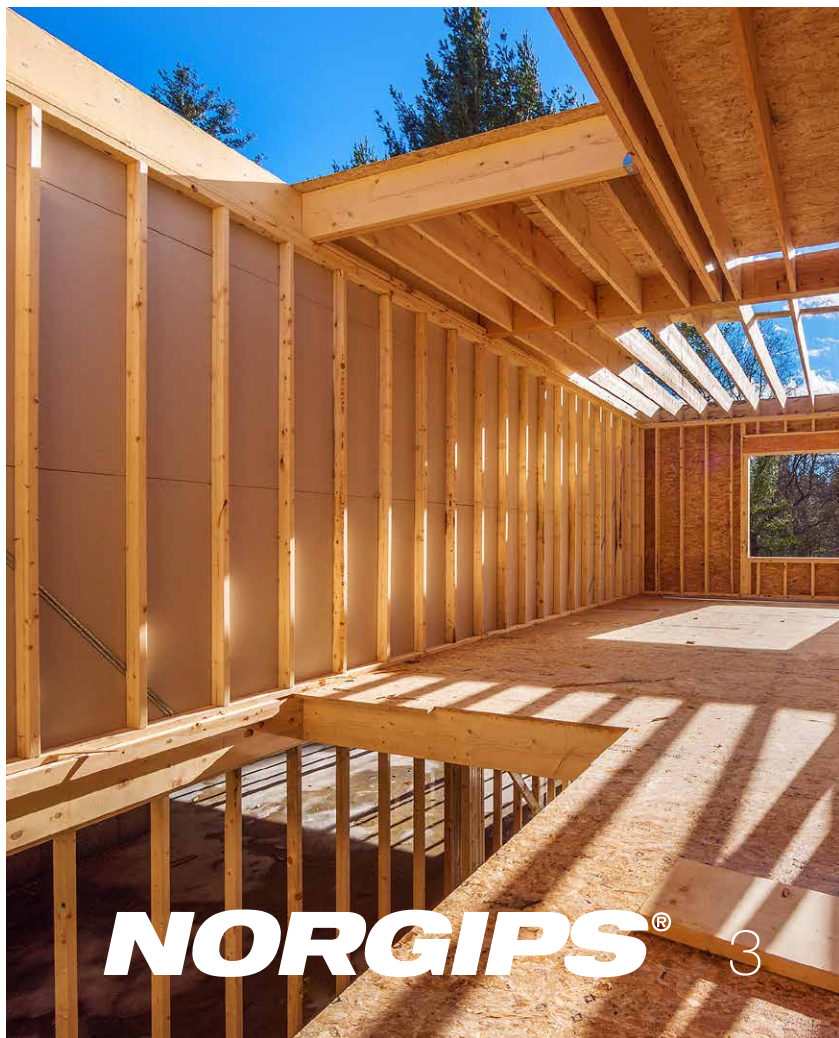




The catalogue of solutions for Skeleton and modular buildings is a collection of practices, which includes solutions on wooden structures using Norgips products.

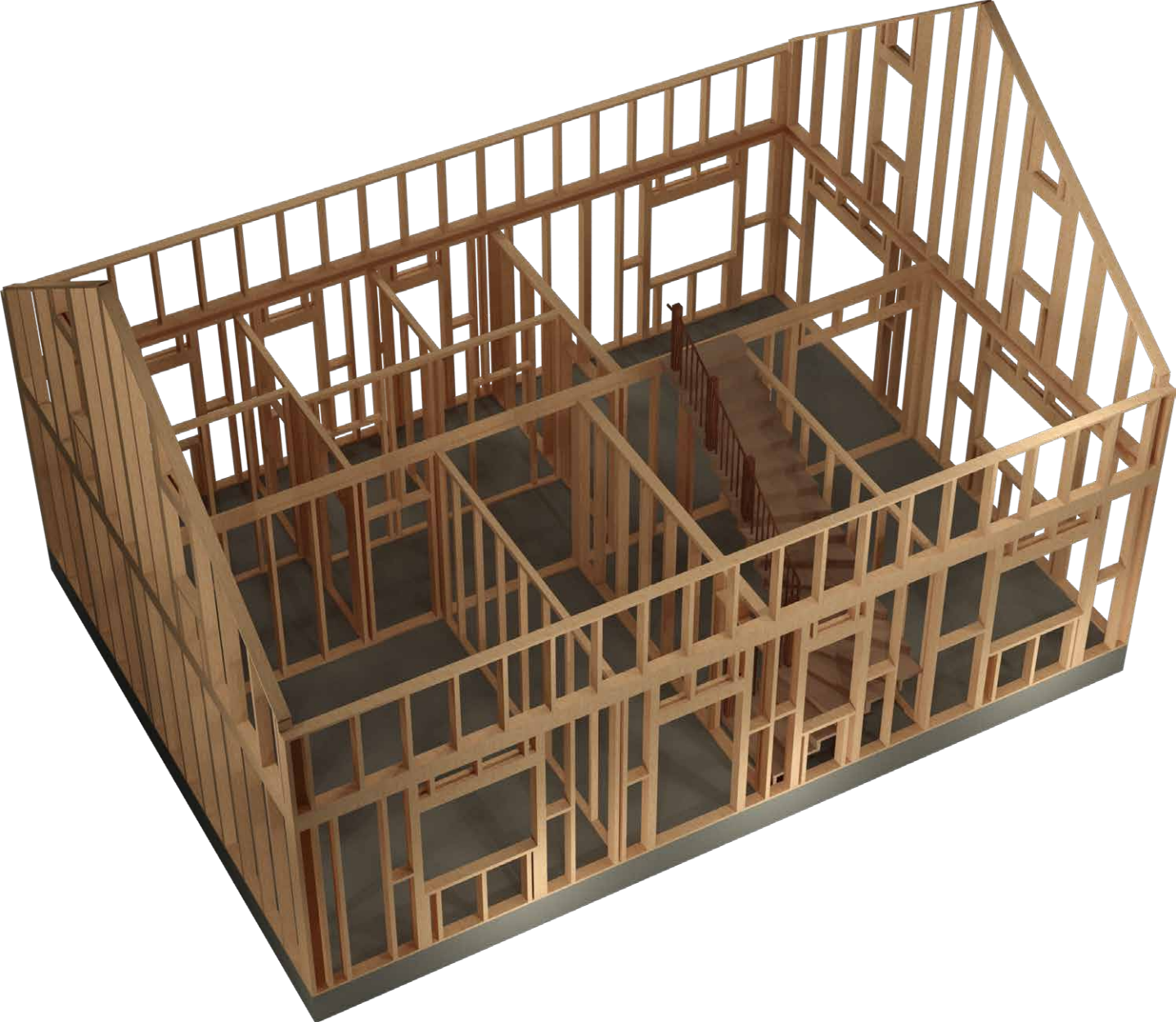
The catalogue contains proven solutions for elements of wall construction, attics, ceilings, installations and other necessary elements when preparing a house based on a frame or modular structure.

This material is intended for contractors, designers and investors looking for proven and quality solutions.



NORGIPS PRODUCTS

FOR SKELETON AND MODULAR BUILDINGS



WIND-PROTECTION BOARDS

NORGIPS Weatherboard 365 th. 9,5 mm type GM-H1

Impregnated gypsum board with fiberglass composite fleece with high resistance to moisture. Boards may be exposed to weather conditions for up to 12 months.

Weight: 7,3 kg/m²

PRODUCT DESCRIPTION

The structural board consists of an impregnated gypsum core, the front and back of which are protected with a waterproof fiberglass coating. It is tightly connected to the gypsum core, and its edges are turned behind the board and glued. The board is resistant to UV radiation and does not constitute a breeding ground for mold or other microorganisms. The boards do not rot or decompose biologically.

INTENDED USE

The board is intended for skeleton and modular construction in order to strengthen the frame structure of walls and ceilings. When attached tightly, it acts as a wind barrier. It is used as a soffit and other external structures. Due to their high resistance to moisture, the boards can be used as structures in „wet” rooms, such as bathrooms, toilets and others.

ATTENTION:

NORGIPS Weatherboard 365 boards may be exposed to weather conditions for up to 12 months. In the final phase of construction, boards must be covered with a weather-resistant external cladding.



NORGIPS GU-X th. 9,5 mm type EH2

Impregnated plasterboard with high resistance to moisture. It may be exposed to weather conditions for up to 6 months.

Weight: 7,2 kg/m²

PRODUCT DESCRIPTION

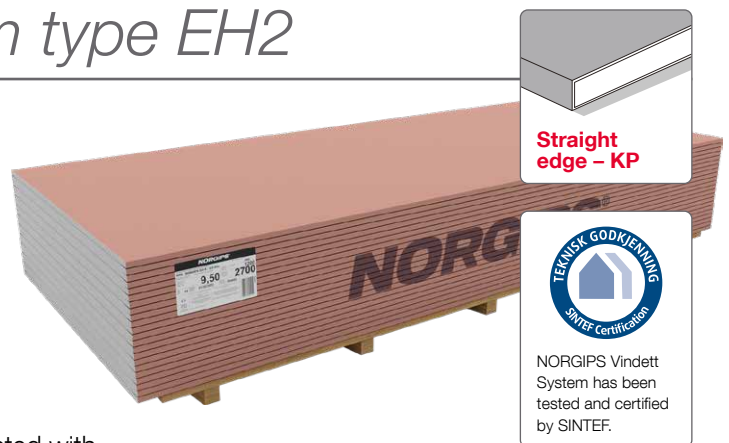
Gypsum board consisting of an impregnated gypsum core protected with cardboard on the front and back. On the red side of the board, the cardboard is additionally impregnated with wax, which makes the surface hydrophobic.

INTENDED USE

The board is intended for skeleton and modular construction in order to strengthen the frame structure of walls and ceilings. When attached tightly, it acts as a wind barrier. It is used as a soffit and other external structures.

ATTENTION:

NORGIPS GU-X boards may be exposed to weather conditions for up to 6 months. In the final phase of construction, the slab must be covered with a weather-resistant external cladding.



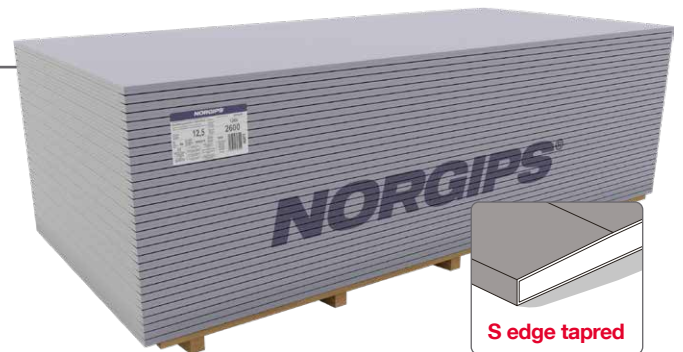


MULTI-TASKING BOARD

*NORGIPS S ACOUSTIC SUPER th. 12,5 mm
type DFH2IRE*

Impregnated plasterboard with high resistance to moisture. Fire-resistant and stiffening board with increased impact resistance.

Weight: 11,7 kg/m²



PRODUCT DESCRIPTION

This sound-insulating plasterboard features tapered, cardboard-laminated longitudinal edges and square transverse edges. The gypsum core of the plasterboard features an increased density, a glass fibre reinforcement and a hydrophobic agent additive (paraffin or silicone).

INTENDED USE

The plasterboard is designated for use in rooms in which the relative humidity may exceed 70%, but not for longer than 10 hours a day and it must not exceed 85%.

Intended for sheathing of partition or curtain walls, wall linings, panelling of suspended ceilings and lining of attics, with the objective to ensure improved sound insulation properties and to obtain fire-rated partitions (max. up to EI 180).

ATTENTION:

NORGIPS DFH2IRE boards cannot be exposed to weather conditions. The board must be covered with a weather-resistant external cladding.



INTERIOR CONSTRUCTION BOARDS

*NORGIPS S GKF and GKFI th. 12,5 / 15 mm
type DF / DFH2*

Fire-resistant plasterboard type DF and fire-resistant impregnated plasterboard type DFH2 with increased resistance to moisture.

Weight (DF/DFH2 th. 12,5 mm): 10,1 kg/m²

Weight (DF/DFH2 th. 15 mm): 14,0 kg/m²



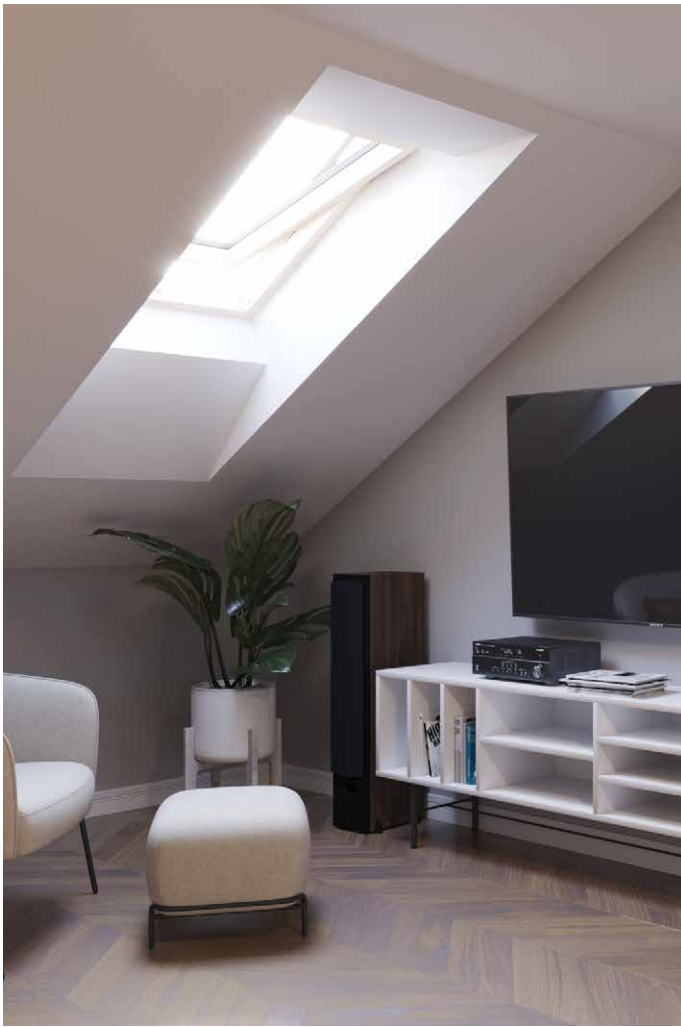
PRODUCT DESCRIPTION

This fire-resistant plasterboard features tapered, cardboard-laminated longitudinal edges and square transverse edges. The plasterboard gypsum core features an increased density and is glass fibre-reinforced. A hydrophobic agent (paraffin or silicone) is added to the gypsum core of the plasterboard type DFH2.

INTENDED USE

The plasterboard is intended for sheathing of partition or curtain walls, wall linings, panelling of suspended ceilings and lining of attics, with the objective to obtain fire-rated partitions.

Plasterboard for indoor construction purposes. DFH2 boards are designated for interior lining of any kind and for use as a part of dry lining systems applied in rooms with increased humidity, such as bathrooms or kitchens. The relative humidity in such rooms may exceed 70%, but not for longer than 10 hours a day and it must not exceed 85%.



NORGIPS S GKB, GKBI th. 9,5* and 12,5 mm type A / H2

Standard plasterboard type A and impregnated plasterboard type H2 with increased resistance to humidity

Weight (type A board th. 9,5 mm): 5,8 kg/m²

Weight (type A board th. 12,5 mm): 6,8 kg/m²

Weight (type H2 board th. 12,5 mm): 7,6 kg/m²



PRODUCT DESCRIPTION

Standard plasterboard features tapered, cardboard-laminated longitudinal edges and square transverse edges. A hydrophobic agent (paraffin or silicone) is added to the gypsum core of the H2 plasterboard.

INTENDED USE

Plasterboard for indoor construction purposes. Designated for interior lining of any kind and for use as a part of dry lining systems. Plasterboard type A applied in rooms with a relative humidity not exceeding 70%.

For plasterboard type H2 relative humidity in such rooms may exceed 70%, but not for longer than 10 hours a day and it must not exceed 85%. Its intended use includes rooms with elevated humidity levels such as bathrooms or kitchens.

* dotyczy płyty Norgips S GKB typ A

NORGIPS S ACOUSTIC th. 12,5 mm type A

Sound-insulating plasterboard type A.

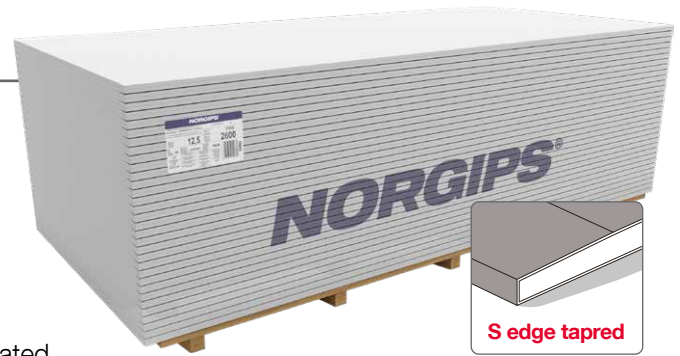
Weight: 9,0 kg/m²

PRODUCT DESCRIPTION

This sound-insulating plasterboard features tapered, cardboard-laminated longitudinal edges and square transverse edges. The gypsum core of the plasterboard features an increased density and, due to its modification, a higher elasticity, which allows for obtaining partitions characterised by increased sound insulating capacity.

INTENDED USE

Plasterboard for indoor construction purposes. Designated for interior lining of any kind and for use as a part of dry lining systems applied in rooms with a relative humidity not exceeding 70%. Developed for sound insulation systems with a high level of sound-insulating requirements. Designated for soundproofing of rooms. The plasterboard is intended for sheathing of partition or curtain walls, wall linings, panelling of suspended ceilings and lining of attics.



NORGIPS KP FLOORBOARD th. 12,5 mm type DFIR

Plasterboard for flooring with reinforced gypsum core type DFIR.

Weight: 13,0 kg/m²

PRODUCT DESCRIPTION

The flooring plasterboard comprises a glass fibre-reinforced gypsum core located between two layers of highly durable cardboard. The plasterboard edge is square, not tapered.

INTENDED USE

The plasterboard is designated for rooms with relative humidity not exceeding 70%. When insulated e.g., with a liquid waterproofing membrane, it can also be used in rooms with increased humidity. The plasterboard is designated for use as flooring underlayment, i.e. so-called dry screed flooring. By applying two plasterboard layers, a partition with fire resistance rating REI 60 can be achieved.



NORGIPS S GKB NORFLEX th. 6,5 mm type A

Plasterboard, designed for bending type A.

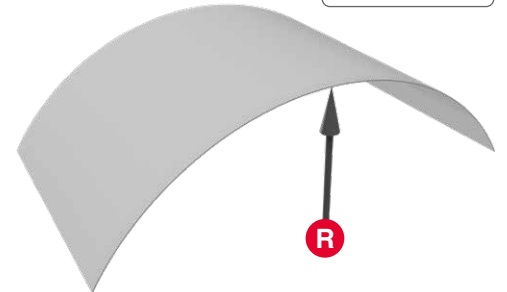
Weight: 5,1 kg/m²

PRODUCT DESCRIPTION

This bendable plasterboard features tapered, cardboard-laminated longitudinal edges and square transverse edges. The gypsum core of the plasterboard is glass fibre-reinforced.

INTENDED USE

Perfectly suitable for refurbishment work, to be used as dry lining. Recommended for sheathing of curved partition walls and suspended ceilings. The minimum curve radius must be at least 100 cm.



R – minimum bending radius of Norflex plasterboard in the longitudinal direction is 100 cm.

ACCESSORIES

Wind sealing tape

PRODUCT DESCRIPTION

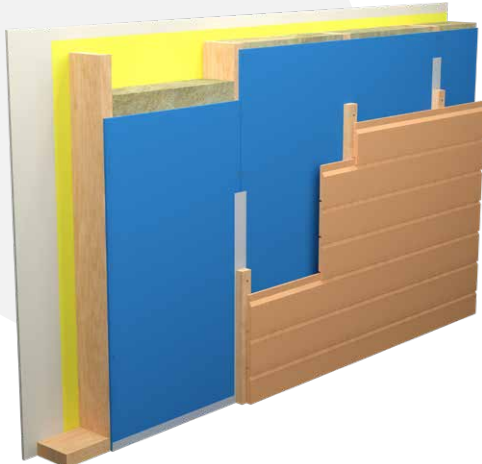
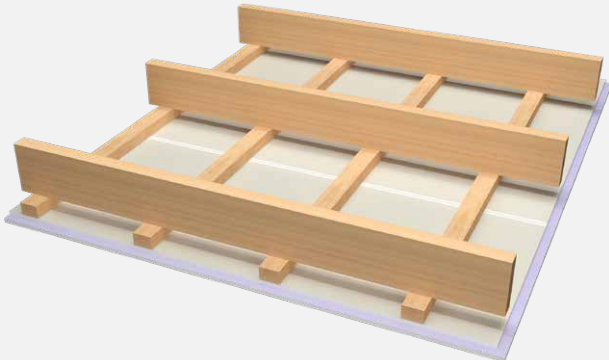
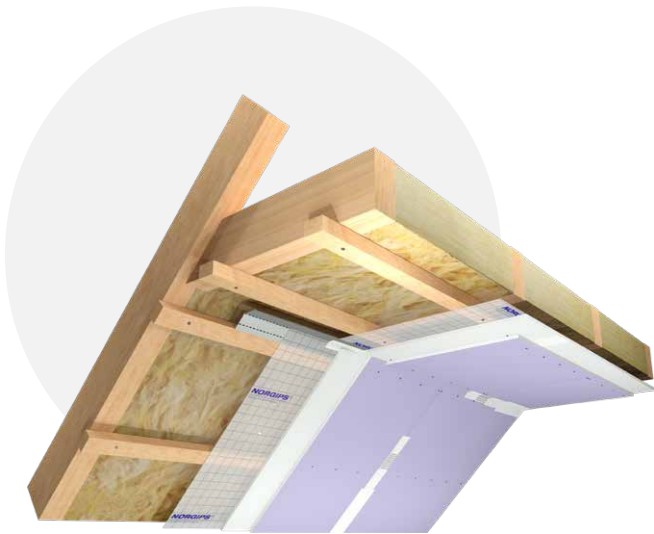
Self-adhesive tape for sealing the joints of wind barrier boards. A system product belonging to the accessories group.

INTENDED USE

Use inside the partition to seal joints between boards, i.e. Weatherboard 365, GU-X or GU, serving as frame stiffening and wind insulation in skeleton and modular constructions.



NORGIPS SOLUTIONS FOR SKELETON AND MODULAR HOUSING



EXTERNAL WALLS

Walls with wind-protection boards



External wall elements:

1. NORGIPS wind-protection board
2. NORGIPS wind sealing tape
3. Mechanical connectors
(find out more in the Assembly part)
4. Timber studs – spacing max. 600 mm
(stud dimensions in accordance with the project of the construction)
5. Mineral wool
6. Vapor barrier
7. External facade
8. Internal lining



Internal lining elements:

- a. NORGIPS plasterboards th. 2x12,5 mm
- b. Norgips wood screws 3,5 x 35 mm
– spacing max. 75 cm (first board layer)
- c. Norgips wood screws 3,5 x 45 mm
– spacing max. 25 cm
(second board layer)
- d. Timber battens – spacing max. 500 mm
- e. Gypsum filler Norgips Start
or ready-mixed Norgips Start & Finish
- f. Norgips reinforcing tape
- g. Ready-mixed finishing compound
Norgips Extra Finish, ready-mixed
Norgips Start & Finish or gypsum filler
Norgips Finish

! ATTENTION:

The length of wood screws used to fix plasterboards should be at least 20 mm longer than the thickness of the cladding.

EXTERNAL WALLS

Walls with wind-protection boards

BSM SZ – 1 x 9,5 W365 + OS



	EXTERNAL WALL		INTERNAL LINING		
NORGIPS CLADDING	Wind-protection board	Thickness	Plasterboard types	Thickness	H max
	Weatherboard 365	9,5 mm	DF + DFH2IRE	2 x 12,5 mm	3,5 m
WALL STRUCTURE	External wall construction	Stud spacing	Lining subconstruction	Batten spacing	
	Timber studs C24, 145 x 45 mm*	max. 600 mm	Lining subconstruction C24, 45 x 45 mm*	max. 600 mm – vertical battens / max. 500 mm – horizontal battens	

BSM SZ – 1 x 9,5 W365 + OS



	EXTERNAL WALL		INTERNAL LINING		
NORGIPS CLADDING	Wind-protection board	Thickness	Plasterboard types	Thickness	H max
	Weatherboard 365	9,5 mm	A + DFH2IRE	2 x 12,5 mm	3,5 m
WALL STRUCTURE	External wall construction	Stud spacing	Lining subconstruction	Batten spacing	
	Timber studs C24, 145 x 45 mm*	max. 600 mm	Lining subconstruction C24, 45 x 45 mm*	max. 600 mm – vertical battens / max. 500 mm – horizontal battens	

BSM SZ – 1 x 9,5 W365 + 2 x 12,5 gk



	EXTERNAL WALL		INTERNAL LINING		
NORGIPS CLADDING	Wind-protection board	Thickness	Plasterboard types	Thickness	H max
	Weatherboard 365	9,5 mm	A + DF	2 x 12,5 mm	3,5 m
WALL STRUCTURE	External wall construction	Stud spacing	Lining subconstruction	Batten spacing	
	Timber studs C24, 145 x 45 mm*	max. 600 mm	Lining subconstruction C24, 145 x 45 mm*	max. 600 mm	

* in accordance with the building's construction project

PARTITION WALLS

Partition walls on timber frame



Partition wall elements:

1. Norgips plasterboard
2. Timber studs – spacing max. 600 mm (stud dimensions in accordance with the project of the construction)
3. Norgips wood screws 3,5 x 35 mm – spacing max. 75 cm (first board layer)
4. Norgips wood screws 3,5 x 45 mm – spacing max. 25 cm (second board layer)
5. Gypsum filler Norgips Start or ready-mixed Norgips Start & Finish
6. Norgips reinforcing tape
7. Ready-mixed finishing compound Norgips Extra Finish, ready-mixed Norgips Start & Finish or gypsum filler Norgips Finish
8. Mineral wool

PARTITION WALLS

Partition walls on timber frame

BSM SD 1x12,5 DFH2IR / D W



NORGIPS CLADDING	Plasterboard	Thickness	Plasterboard type	H max
	ACOUSTIC SUPER	1 x 12,5 mm	DFH2IRE	3,5 m
WALL STRUCTURE	Wall construction		Stud spacing	
	Timber studs C24, 95 x 45 mm*		max. 600 mm	

BSM SD 2x12,5 A+DFH2IR / D W



NORGIPS CLADDING	Plasterboard	Thickness	Plasterboard type	H max
	A + ACOUSTIC SUPER	2 x 12,5 mm	A + DFH2IRE	3,5 m
WALL STRUCTURE	Wall construction		Stud spacing	
	Timber studs C24, 95 x 45 mm*		max. 600 mm	

BSM SD 2x12,5 A / D W



NORGIPS CLADDING	Plasterboard	Thickness	Plasterboard type	H max
	A	2 x 12,5 mm	A	3,5 m
WALL STRUCTURE	Wall construction		Stud spacing	
	Timber studs C24, 95 x 45 mm*		max. 600 mm	

* in accordance with the building's construction project

PARTITION WALLS

Partition walls on timber frame with fire resistance class

View from the side of horizontal profiles



Partition wall elements:

1. Norgips plasterboard
2. Timber studs – spacing max. 600 mm (stud dimensions in accordance with the project of the construction)
3. Horizontal hat profile – spacing max. 500 mm*
4. Norgips screws 3,5 x 25 mm – spacing max. 75 cm (first board layer)
5. Norgips screws 3,5 x 35 mm – spacing max. 25 cm (second board layer)
6. Norgips wood screws 3,5 x 35 mm – spacing max. 75 cm (first board layer)
7. Norgips wood screws 3,5 x 45 mm – spacing max. 25 cm (second board layer)
8. Gypsum filler Norgips Start or ready-mixed Norgips Start & Finish
9. Norgips reinforcing tape
10. Ready-mixed finishing compound Norgips Extra Finish, ready-mixed Norgips Start & Finish or gypsum filler Norgips Finish
11. Mineral wool

View from the side of wooden studs



PARTITION WALLS

Partition walls on timber frame
with fire resistance class

BSM SD 1x12,5 DFH2IR / D / KAP W



NORGIPS CLADDING	Plasterboard	Thickness	Plasterboard type	H max	Fire resistance class
	ACOUSTIC SUPER	1 x 12,5 mm	DFH2IRE	3,5 m	REI 15

WALL STRUCTURE	Wall construction	Stud spacing	Subconstruction	Stud spacing
	Timber studs C24, 95 x 45 mm**	max. 600 mm	Steel hat profiles*	max. 600 mm – vertical assemblage / max. 500 mm – horizontal assemblage

BSM SD 2x12,5 A+DFH2IR / D / KAP W



NORGIPS CLADDING	Plasterboard	Thickness	Plasterboard type	H max	Fire resistance class
	A + ACOUSTIC SUPER	2 x 12,5 mm	A + DFH2IRE	3,5 m	REI 30

WALL STRUCTURE	Wall construction	Stud spacing	Subconstruction	Stud spacing
	Timber studs C24, 95 x 45 mm**	max. 600 mm	Steel hat profiles*	max. 600 mm – vertical assemblage / max. 500 mm – horizontal assemblage

BSM SD 2x12,5 DF / D / KAP W



NORGIPS CLADDING	Plasterboard	Thickness	Plasterboard type	H max	Fire resistance class
	DF	2 x 12,5 mm	DF	3,5 m	REI 30

WALL STRUCTURE	Wall construction	Stud spacing	Subconstruction	Stud spacing
	Timber studs C24, 95 x 45 mm**	max. 600 mm	Steel hat profiles*	max. 600 mm – vertical assemblage / max. 500 mm – horizontal assemblage

* to reach REI performance, hat profiles are required from one side of the wall only
** in accordance with the building's construction project

CEILINGS

Ceiling linings on timber frame

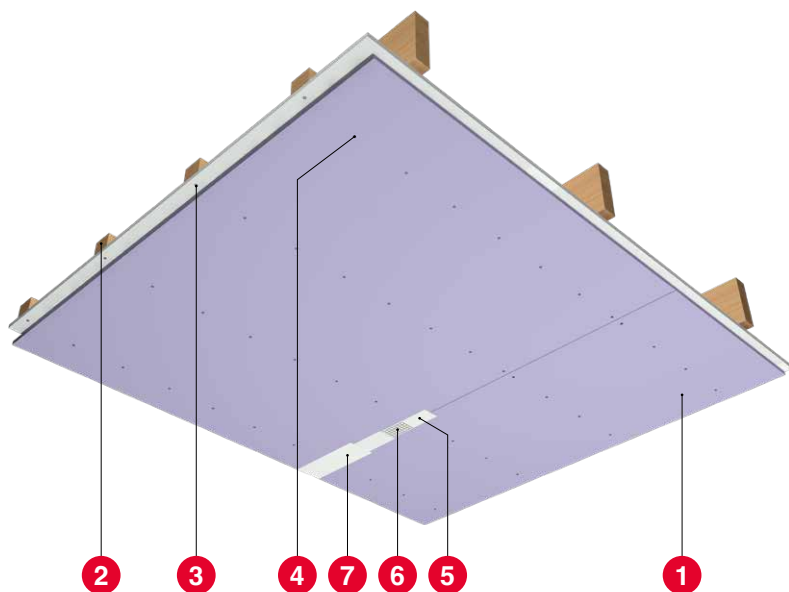
View from the side of construction



Ceiling elements:

1. Norgips plasterboard
2. Timber battens – spacing max. 500 mm
3. Norgips wood screws 3,5 x 35 mm – spacing max. 40 cm (first board layer)
4. Norgips wood screws 3,5 x 45 mm – spacing max. 17 cm (second board layer)
5. Gypsum filler Norgips Start or ready-mixed Norgips Start & Finish
6. Norgips reinforcing tape
7. Ready-mixed finishing compound Norgips Extra Finish, ready-mixed Norgips Start & Finish or gypsum filler Norgips Finish

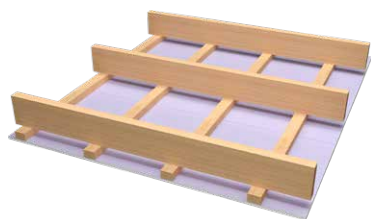
View from the side of plasterboard lining



CEILINGS

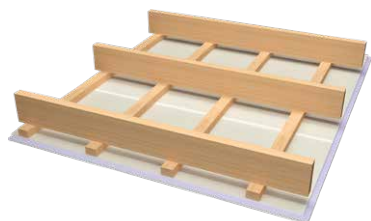
Ceiling linings on timber frame

BSM OSF – 1 x 12,5 DFH2IRE/D



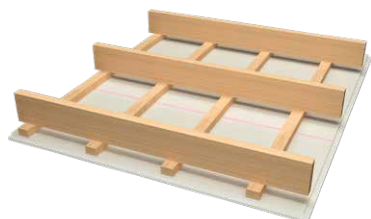
NORGIPS CLADDING	Plasterboard ACOUSTIC SUPER	Thickness 1 x 12,5 mm	Plasterboard type DFH2IRE
WALL STRUCTURE	Ceiling subconstruction Timber battens C24, 45 x 45 mm*	Stud spacing max. 500 mm	

BSM OSF – 2 x 12,5 A + DFH2IRE/D



NORGIPS CLADDING	Plasterboard A + ACOUSTIC SUPER	Thickness 2 x 12,5 mm	Plasterboard type A + DFH2IRE
WALL STRUCTURE	Ceiling subconstruction Timber battens C24, 45 x 45 mm*	Stud spacing max. 500 mm	

BSM OSF – 2 x 12,5 DF/D



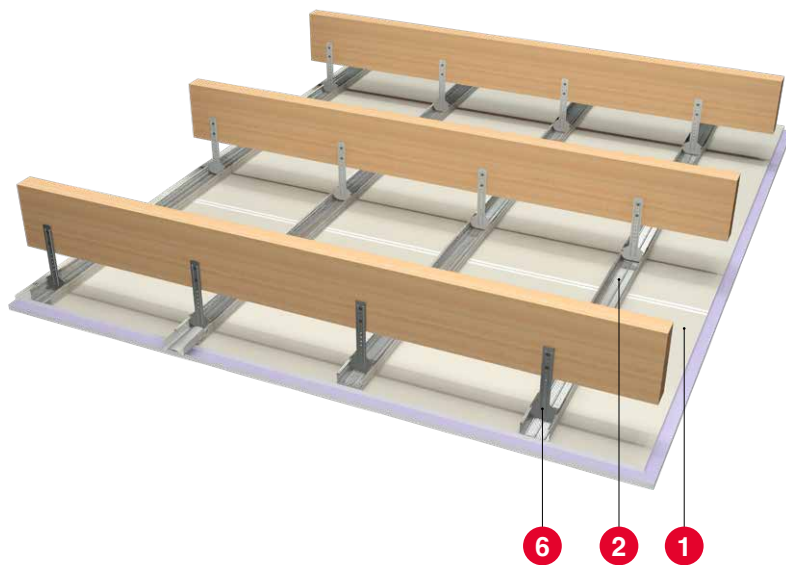
NORGIPS CLADDING	Plasterboard DF	Thickness 2 x 12,5 mm	Plasterboard type DF
WALL STRUCTURE	Ceiling subconstruction Timber battens C24, 45 x 45 mm*	Stud spacing max. 500 mm	

* in accordance with the building's construction project

CEILINGINGS

Ceiling linings with fire resistance class

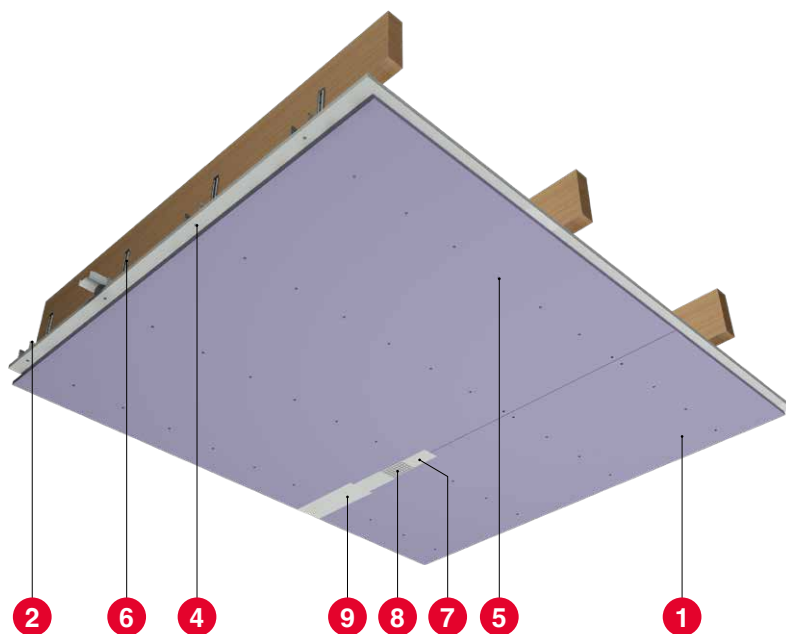
View from the side of construction



Ceiling elements:

1. Norgips plasterboard
2. NORGIPS CD60 profiles – spacing max. 400 mm
3. Norgips sealing tape (th. 30 mm)
4. Norgips screws 3,5 x 25 mm – spacing max. 40 cm (first board layer)
5. Norgips screws 3,5 x 35 mm – spacing max. 17 cm (second board layer)
6. Norgips hangers (L / ES/ ES Plus)
7. Gypsum filler Norgips Start or ready-mixed Norgips Start & Finish
8. Norgips reinforcing tape
9. Ready-mixed finishing compound Norgips Extra Finish, ready-mixed Norgips Start & Finish or gypsum filler Norgips Finish

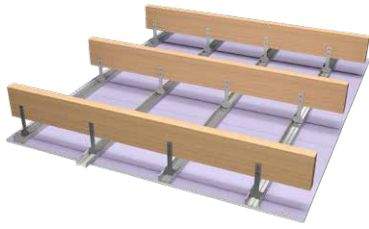
View from the side of plasterboard lining



CEILINGS

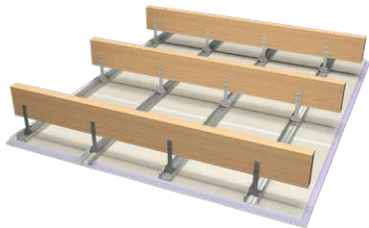
Ceiling linings with fire resistance class

BSM OSF – 1 x 12,5 DFH2IRE / CD60



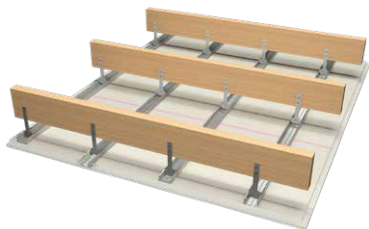
NORGIPS CLADDING	Plasterboard	Thickness	Plasterboard type	Fire resistance class
	ACOUSTIC SUPER	1 x 12,5 mm	DFH2IRE	REI 15
WALL STRUCTURE	Ceiling subconstruction			Batten spacing
	Norgips CD60 / Hat profiles / Hangers: L, ES			max. 400 mm

BSM OSF – 2 x 12,5 A + DFH2IRE / CD60



NORGIPS CLADDING	Plasterboard	Thickness	Plasterboard type	Fire resistance class
	A + ACOUSTIC SUPER	2 x 12,5 mm	A + DFH2IRE	REI 30
WALL STRUCTURE	Ceiling subconstruction			Batten spacing
	Norgips CD60 / Hat profiles / Hangers: L, ES			max. 400 mm

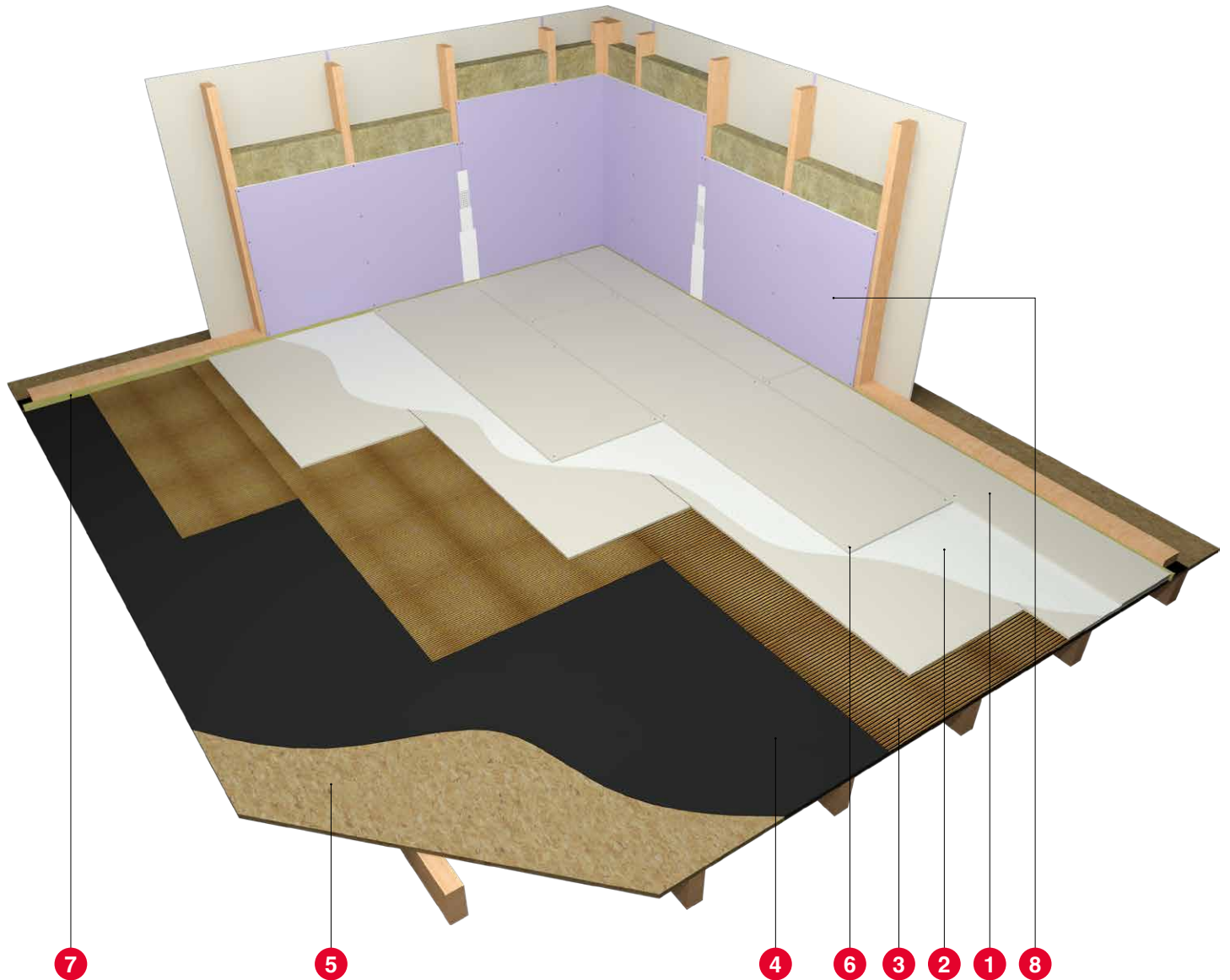
BSM OSF – 2 x 12,5 DF / CD60



NORGIPS CLADDING	Plasterboard	Thickness	Plasterboard type	Fire resistance class
	DF	2 x 12,5 mm	DF	REI 45
WALL STRUCTURE	Ceiling subconstruction			Batten spacing
	Norgips CD60 / Hat profiles / Hangers: L, ES			max. 400 mm

FLOORS

Dry screed flooring



Dry screed elements:

1. Norgips Floor plasterboard
2. Gypsum filler Norgips Start
3. Leveling layer (e.g. corrugated cardboard)
4. Optional moisture insulation with insulating felt or PE foil
5. Even timber substrate, e.g. OSB boards, wooden planks
6. Norgips 3.5 x 25 mm wood screws or C 4/23 mm staples – maximum spacing 30 cm
7. Mineral wool expansion joint (min. 10 mm)
8. Partition wall

FLOORS

Dry screed flooring

BSM SJ – 1 x 12,5 DFIR/PD



NORGIPS CLADDING	Plasterboard floor type DFIR	Thickness 1 x 12,5 mm	Plasterboard type DFIR
WALL STRUCTURE	Dry screed base Even timber substrate, e.g. OSB boards, wooden planks	Wooden beams spacing in accordance with construction project	

BSM SJ – 2 x 12,5 DFIR/PD



NORGIPS CLADDING	Plasterboard floor type DFIR	Thickness 2 x 12,5 mm	Plasterboard type DFIR
WALL STRUCTURE	Dry screed base Even timber substrate, e.g. OSB boards, wooden planks	Wooden beams spacing in accordance with construction project	

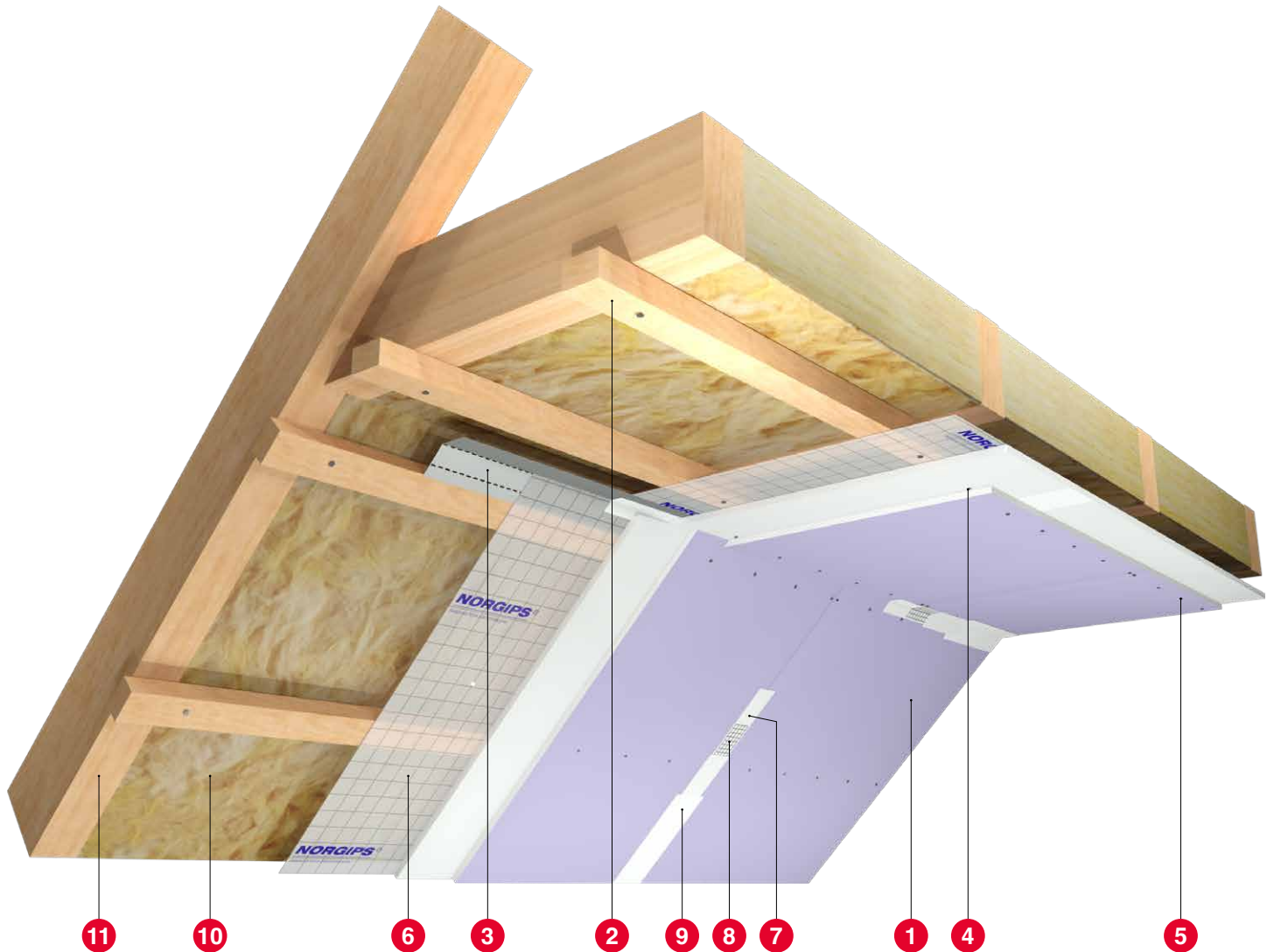
BSM SJ – 2 x 12,5 DFIR/PD – F



NORGIPS CLADDING	Plasterboard floor type DFIR	Thickness 2 x 12,5 mm	Plasterboard type DFIR	Fire resistance class REI 60
WALL STRUCTURE	Dry screed base Even timber substrate, e.g. OSB boards, wooden planks	Wooden beams spacing in accordance with construction project		

ATTICS

Attic partitions on timber frame



Attic partition elements:

1. Norgips plasterboard
2. Timber battens – spacing max. 50 cm
3. Norgips Flex profile (optional)
4. NORGIPS wood screws 3,5 x 35 mm – spacing max. 40 cm (first board layer)
5. NORGIPS wood screws 3,5 x 45 mm – spacing max. 17 cm (first board layer)
6. Vapor barrier foil
7. Gypsum filler Norgips Start or ready-mixed Norgips Start & Finish
8. Norgips reinforcing tape
9. Ready-mixed finishing compound Norgips Extra Finish, ready-mixed Norgips Start & Finish or gypsum filler Norgips Finish
10. Mineral wool
11. Roof rafters

ATTICS

Attic partitions on wooden battens

BSM ZP – 1 x 12,5 DFH2IRE/D



NORGIPS CLADDING	Plasterboard ACOUSTIC SUPER	Thickness 1 x 12,5 mm	Plasterboard type DFH2IRE
WALL STRUCTURE	Attic subconstruction Timber battens C24, 45 x 45 mm*	Stud spacing max. 500 mm	

BSM ZP – 2 x 12,5 A + DFH2IRE/D



NORGIPS CLADDING	Plasterboard A + ACOUSTIC SUPER	Thickness 2 x 12,5 mm	Plasterboard type A + DFH2IRE
WALL STRUCTURE	Attic subconstruction Timber battens C24, 45 x 45 mm*	Stud spacing max. 500 mm	

BSM ZP – 2 x 12,5 DFH2IRE/D

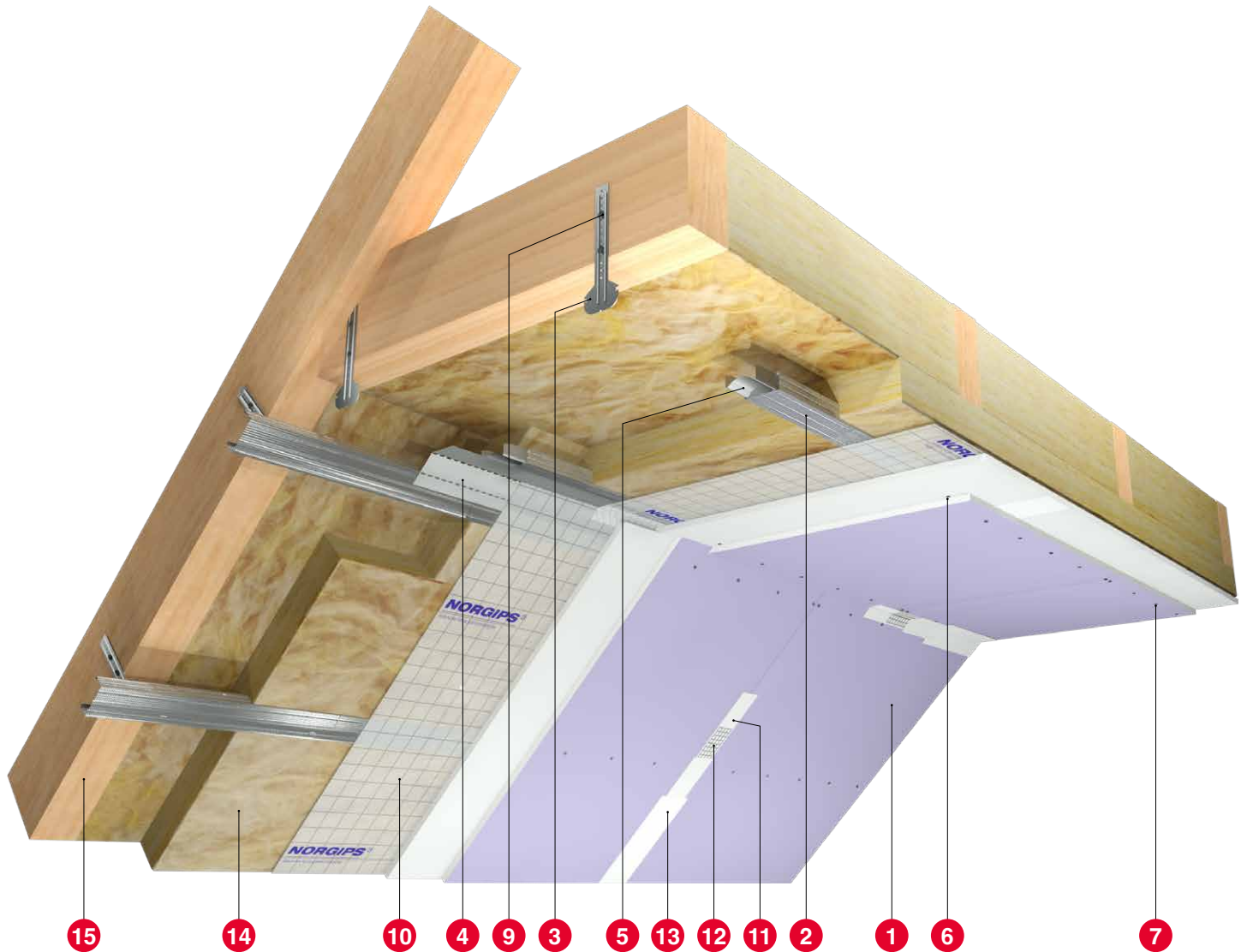


NORGIPS CLADDING	Plasterboard ACOUSTIC SUPER	Thickness 2 x 12,5 mm	Plasterboard type DFH2IRE
WALL STRUCTURE	Attic subconstruction Timber battens C24, 45 x 45 mm*	Stud spacing max. 500 mm	

* in accordance with the building's construction project

ATTICS

Attic partitions with fire resistance class



Attic partition elements:

1. Norgips plasterboard
2. Norgips CD60 / Hat profiles – spacing max. 40 cm
3. Norgips hangers (L / ES/ ES Plus)
4. Norgips Flex profile (optional)
5. Norgips longitudinal coupler*
6. Norgips screws 3,5 x 25 mm – spacing max. 40 cm (first layer of panelling)
7. Norgips screws 3,5 x 45 mm – spacing max. 17 cm (first layer of panelling)
8. Norgips 3.5 x 9.5 mm tapping screws with self-drilling bits
9. Norgips 3.5 x 35 mm wood screws
10. Vapor barrier foil
11. Gypsum filler Norgips Start or ready-mixed Norgips Start & Finish
12. Norgips reinforcing tape
13. Ready-made joint compound Norgips Extra Finish, ready-made joint compound Norgips Start & Finish, gypsum joint compound Norgips Finish
14. Mineral wool
15. Roof rafters

* For making a single joint with profiles, eight Norgips 3.5 x 9.5 mm sheet metal screws with self-tapping bits are to be used.

ATTICS

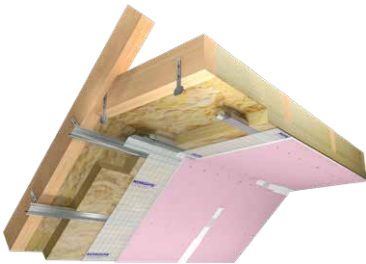
Attic partitions with fire resistance class

BSM ZP – 1 x 12,5 DFH2IRE / CD60 W



NORGIPS CLADDING	Plasterboard	Thickness	Plasterboard type	Fire resistance class
	ACOUSTIC SUPER	1 x 12,5 mm	DFH2IRE	REI 15
WALL STRUCTURE	Attic subconstruction			Batten spacing
	Norgips CD60 / Hat profiles / Hangers: L, ES			max. 400 mm

BSM ZP – 1 x 15 DF / CD60 W



NORGIPS CLADDING	Plasterboard	Thickness	Plasterboard type	Fire resistance class
	DF	1 x 15 mm	DF	REI 30
WALL STRUCTURE	Attic subconstruction			Batten spacing
	Norgips CD60 / Hat profiles / Hangers: L, ES			max. 400 mm

BSM ZP – 2 x 12,5 A + DFH2IRE / CD60 W



NORGIPS CLADDING	Plasterboard	Thickness	Plasterboard type	Fire resistance class
	A + ACOUSTIC SUPER	2 x 12,5 mm	A + DFH2IRE	REI 30
WALL STRUCTURE	Attic subconstruction			Batten spacing
	Norgips CD60 / Hat profiles / Hangers: L, ES			max. 400 mm

BSM ZP – 2 x 12,5 DF / CD60 W



NORGIPS CLADDING	Plasterboard	Thickness	Plasterboard type	Fire resistance class
	DF	2 x 12,5 mm	DF	REI 30
WALL STRUCTURE	Attic subconstruction			Batten spacing
	Norgips CD60 / Hat profiles / Hangers: L, ES			max. 400 mm

ROOF SOFFIT

Roof soffit made out of gypsum boards

BSM POD – 1 x 9,5 W365

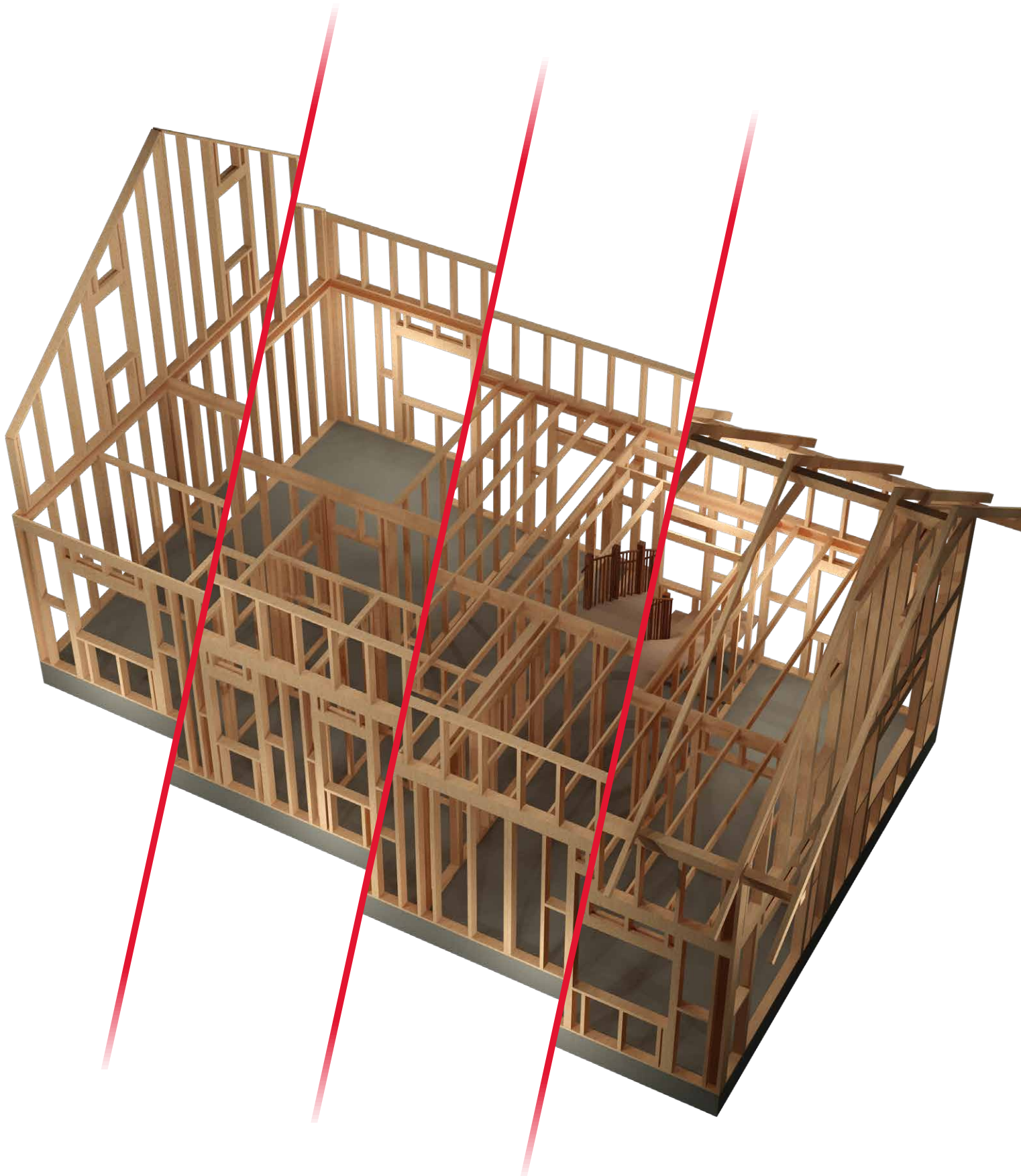


1 3

Roof soffit elements:

1. Norgips gypsum board Weatherboard 365
2. Mechanical connectors
3. Wind sealing tape

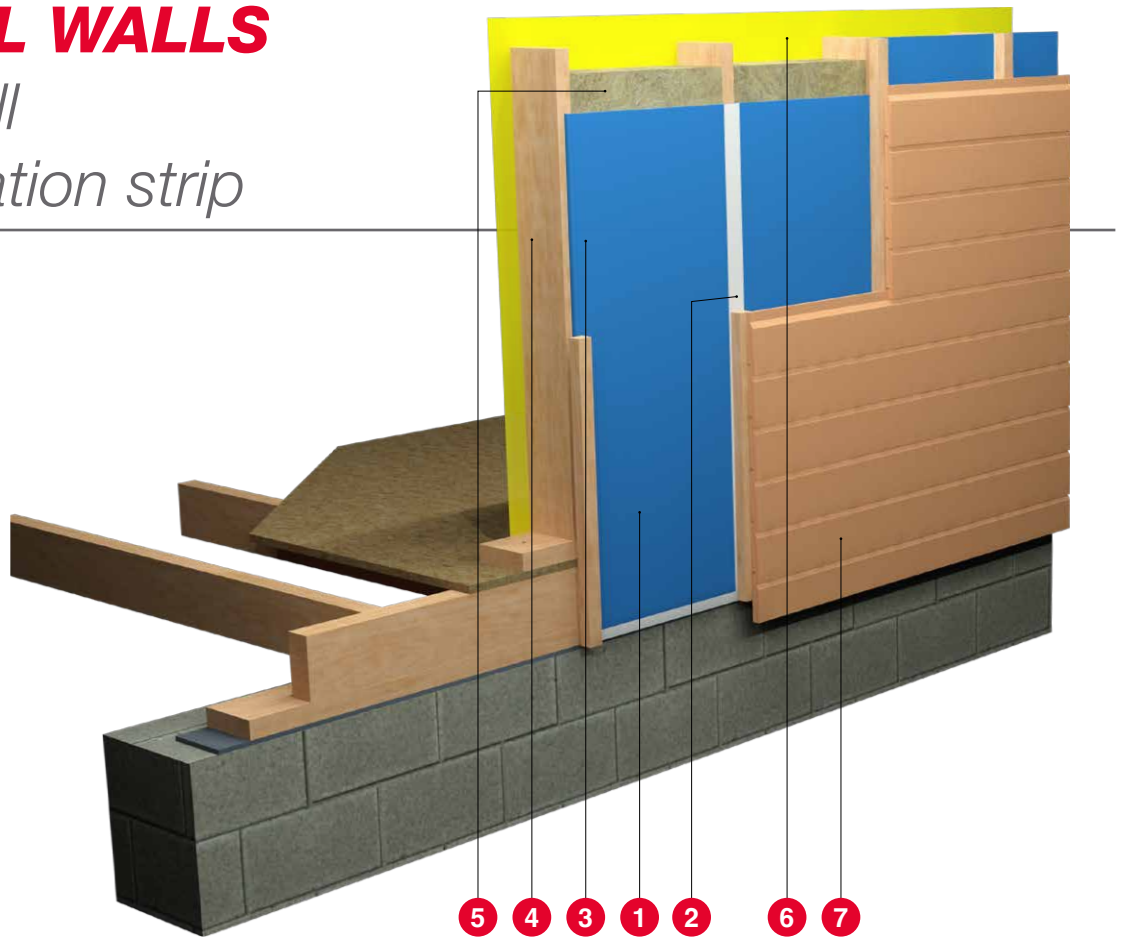
TECHNICAL CONNECTION DETAILS



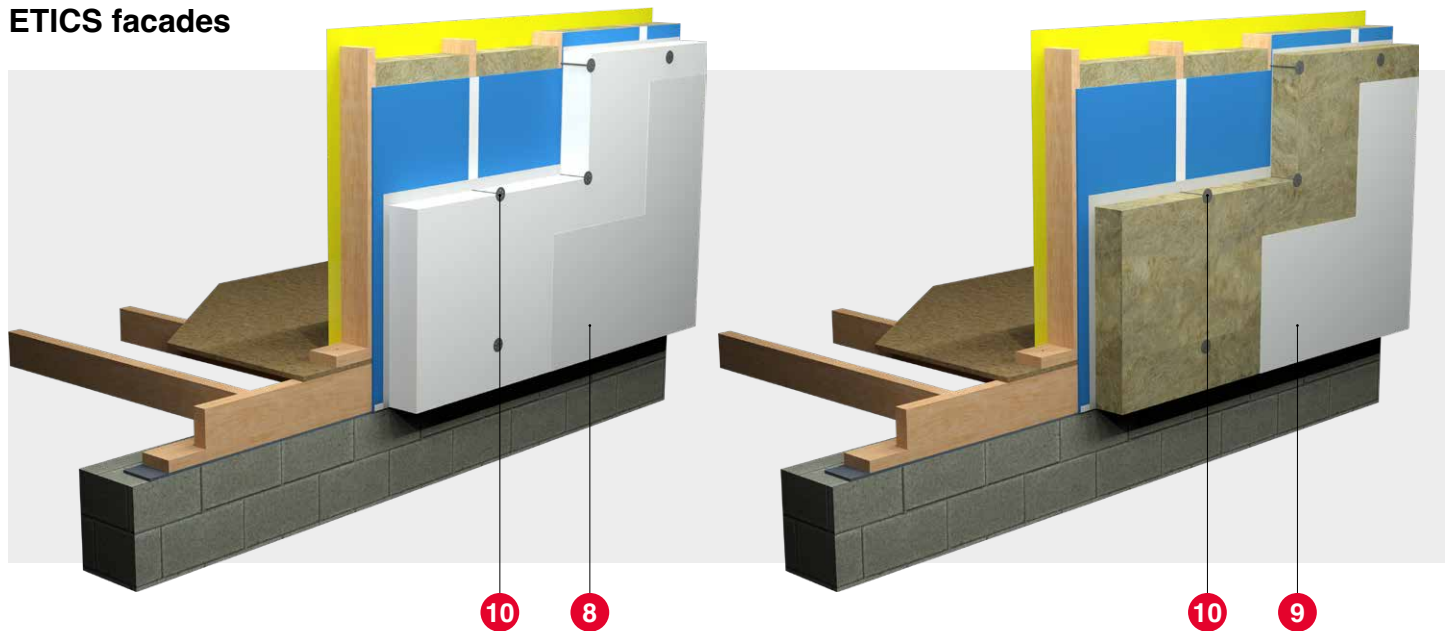
EXTERNAL WALLS

*External wall
on a foundation strip*

Ventilated facade



ETICS facades



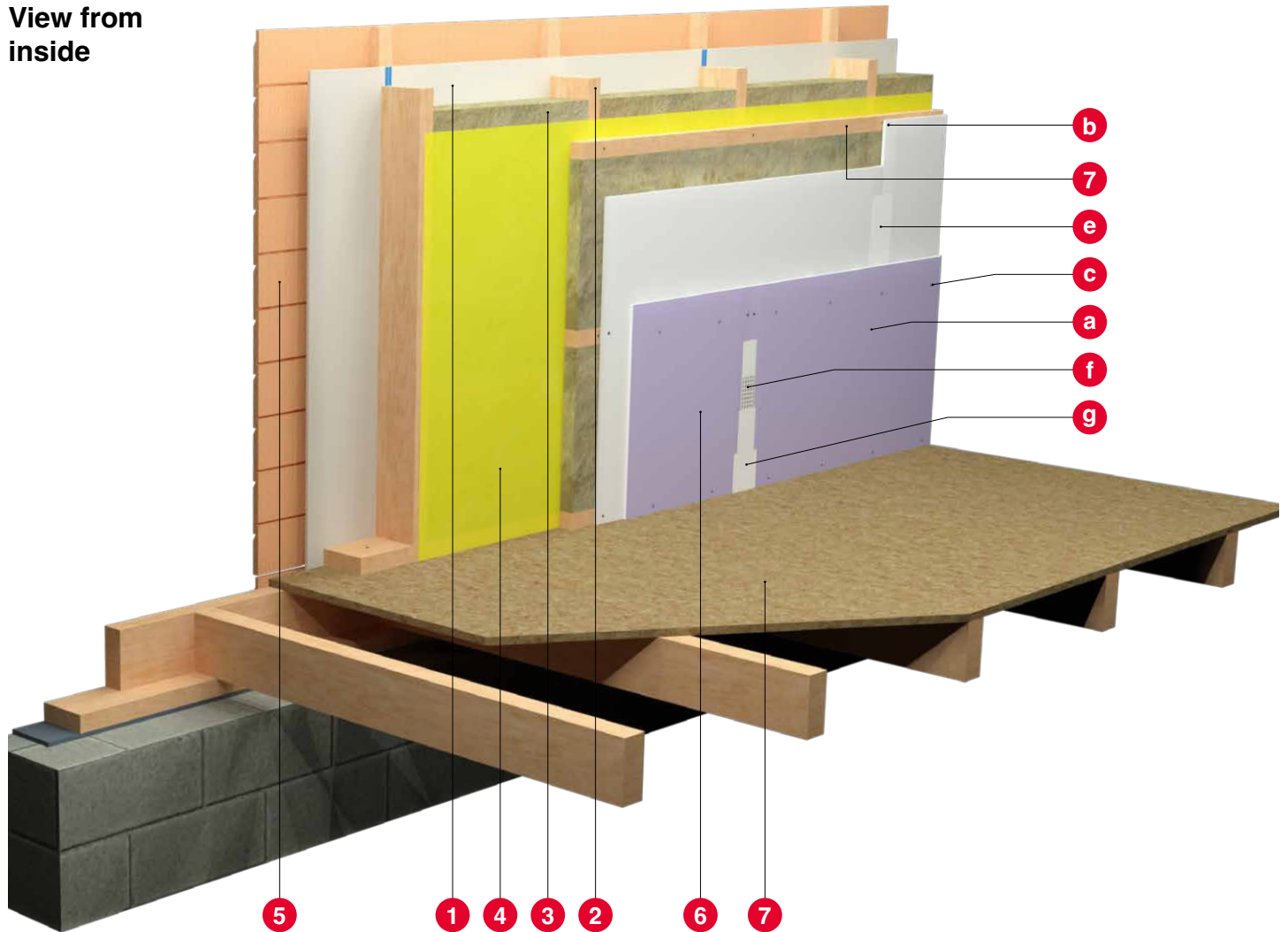
External wall elements:

1. Norgips wind-protection board (for ETICS – Norgips Weatherboard 365)
2. Wind sealing tape
3. Mechanical connectors
4. Timber studs – spacing every 600 mm
5. Mineral wool
6. Vapor barrier foil
7. Ventilated facade
8. ETICS (EPS) facade
9. ETICS (mineral wool) facade
10. ETICS connectors (fixed to wooden studs)

EXTERNAL WALLS

External wall on a foundation strip

View from
inside



Wall elements:

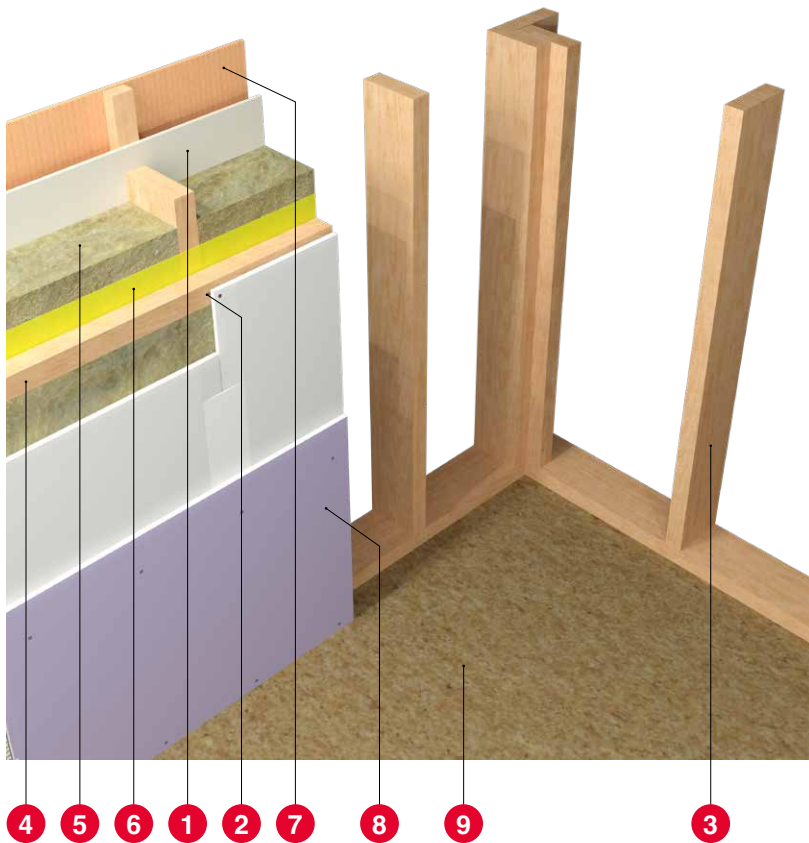
1. Norgips wind-protection board
2. Timber studs – spacing every 600 mm
3. Mineral wool
4. Vapor barrier foil
5. Facade
6. Internal lining
7. Timber floor, e.g. OSB board

Internal lining:

- a. NORGIPS plasterboards th. 2x12,5 mm
- b. Norgips wood screws 3,5 x 35 mm – spacing max. 75 cm (first board layer)
- c. Norgips wood screws 3,5 x 45 – spacing max. 25 cm (second board layer)
- d. Timber battens – spacing max. 500 mm
- e. Gypsum filler Norgips Start or ready-mixed Norgips Start & Finish
- f. Norgips reinforcing tape
- g. Ready-mixed finishing compound Norgips Extra Finish, ready-mixed Norgips Start & Finish or gypsum filler Norgips Finish

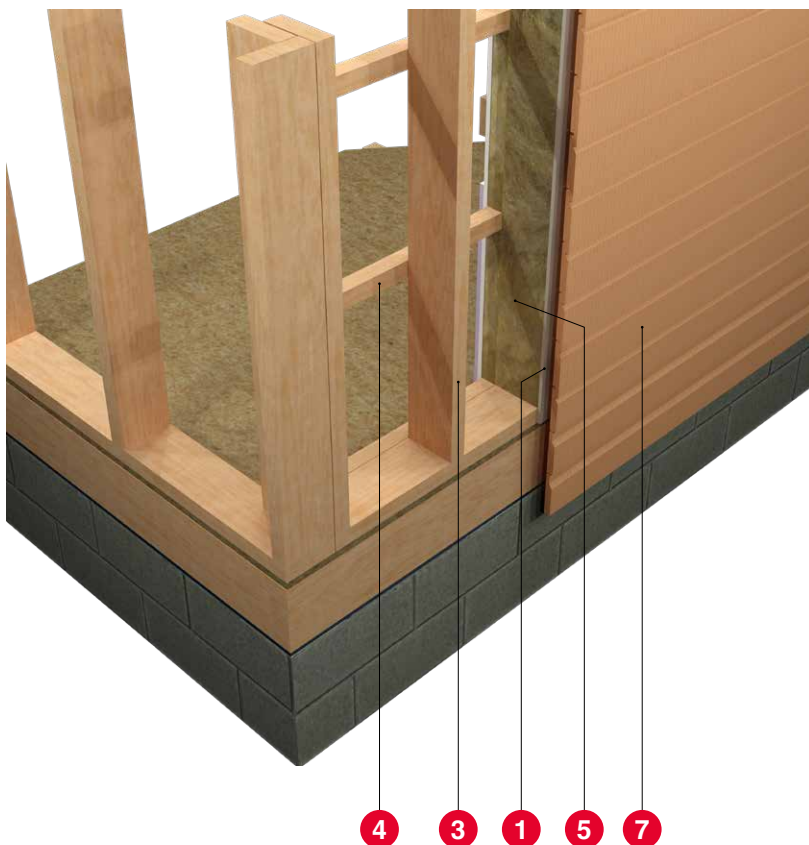
EXTERNAL WALLS

Corners of external walls



Wall elements:

1. Norgips wind-protection board
2. Mechanical connectors
3. Timber studs – spacing every 600 mm
4. Timber battens – spacing max. 500 mm
5. Mineral wool
6. Vapor barrier foil
7. Facade
8. NORGIPS DUO lining
9. Wooden floor, e.g. OSB board



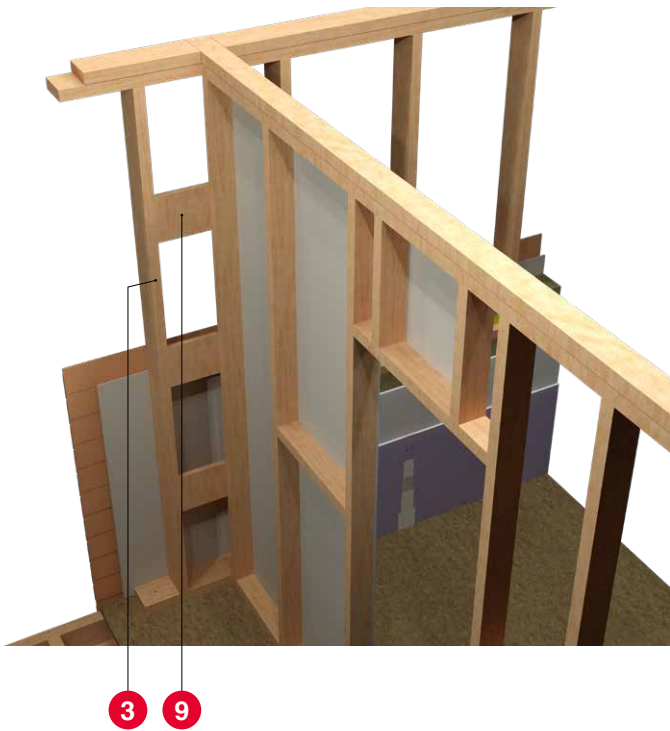
! ATTENTION:

Remember to maintain the continuity of the vapor barrier foil in the corners.

EXTERNAL WALLS

T-connections of external walls with internal walls

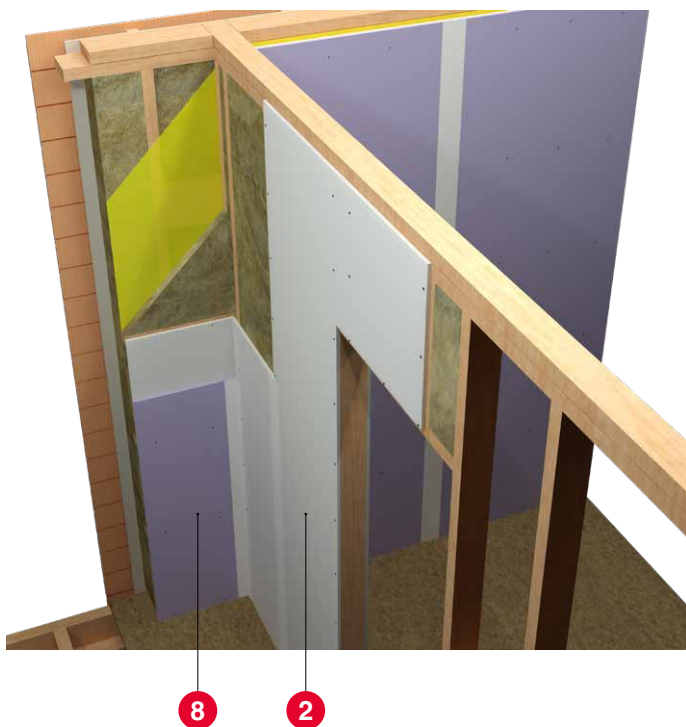
View 1 – construction design



View 2 – internal substructure



View 3 – internal lining



Wall elements:

1. Norgips wind-protection board
2. NORGIPS wood screws
3. Timber studs – spacing every 600 mm
4. Timber battens – spacing max. 500 mm
5. Mineral wool
6. Vapor barrier foil
7. Facade
8. NORGIPS DUO lining
9. Reinforcement of the wall structure with wooden battens
10. Wooden floor, e.g. OSB board

! ATTENTION:

Be careful not to puncture the vapor barrier foil.
Damaged areas should be sealed with sealing tape.

INTERNAL WALLS

Connections of partition walls to the ceiling

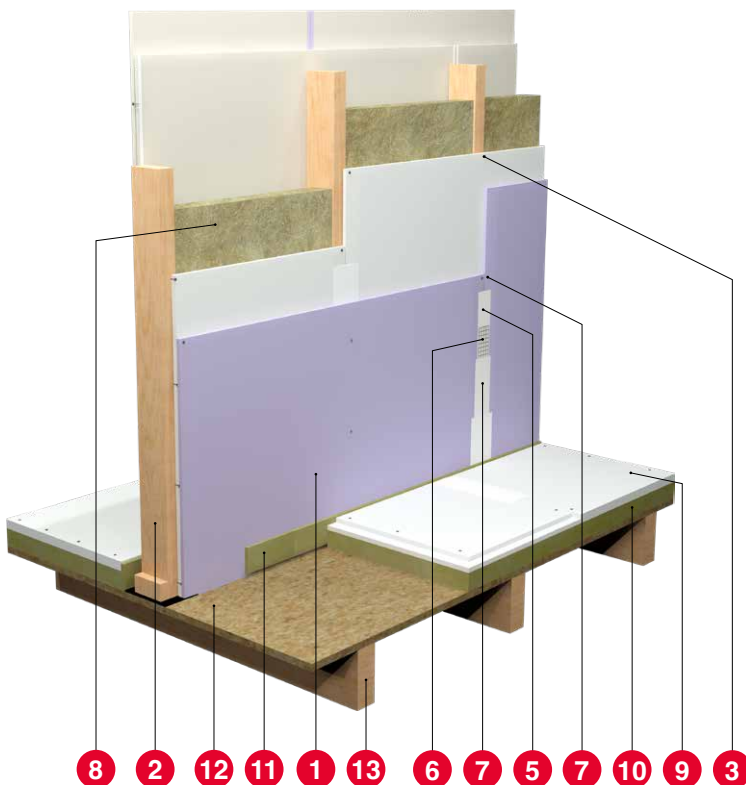
Connection of partition wall with timber ceiling beams



Wall elements:

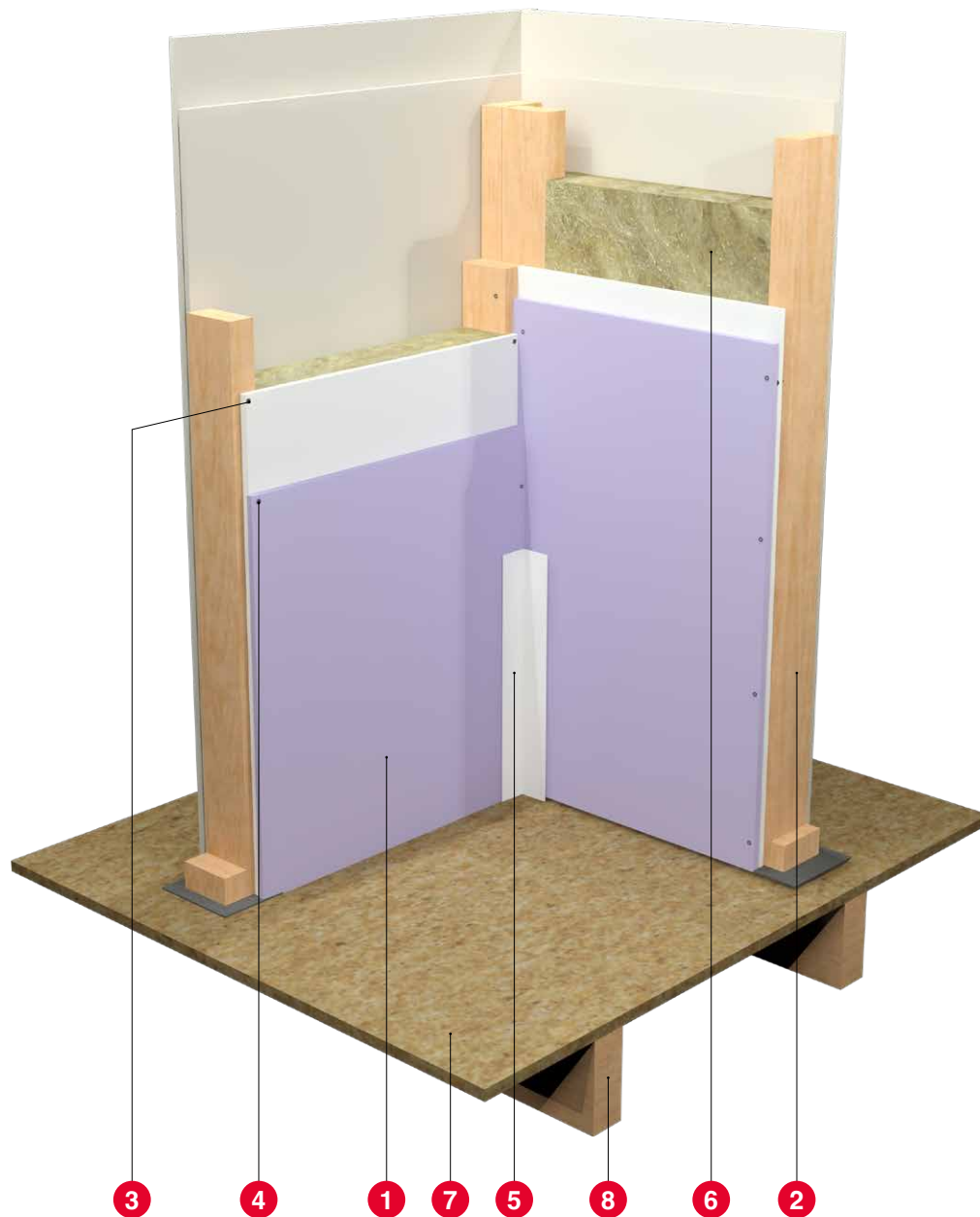
1. NORGIPS DUO lining
2. Timber studs – spacing every 600 mm
3. Norgips wood screws 3,5 x 35 mm – spacing max. 75 cm (first board layer)
4. Norgips wood screws 3,5 x 45 mm – spacing max. 25 cm (second board layer)
5. Gypsum filler Norgips Start or ready-mixed Norgips Start & Finish
6. Norgips reinforcing tape
7. Ready-mixed finishing compound Norgips Extra Finish, ready-mixed Norgips Start & Finish or gypsum filler Norgips Finish
8. Mineral wool
9. NORGIPS dry screed
10. Insulation board substrate (e.g. high density mineral wool / EPS 100 - 0.38)
11. Mineral wool expansion joint 10 mm
12. Timber floor, e.g. OSB board
13. Timber ceiling beams

Connection of partition wall with timber floor beams



INTERNAL WALLS

L-connection of walls



Wall elements:

1. NORGIPS DUO lining
2. Timber studs – spacing every 600 mm
3. Norgips wood screws 3,5 x 35 mm – spacing max. 75 cm (first board layer)
4. Norgips wood screws 3,5 x 45 mm – spacing max. 25 cm (second board layer)
5. Norgips reinforcing tape
6. Mineral wool
7. Timber floor, e.g. OSB board
8. Timber ceiling beams

INTERNAL WALLS

Wall load

Strengthening the wall for loads such as cabinets, shelves, TV set, decorative elements

Example of how to mount a cabinet



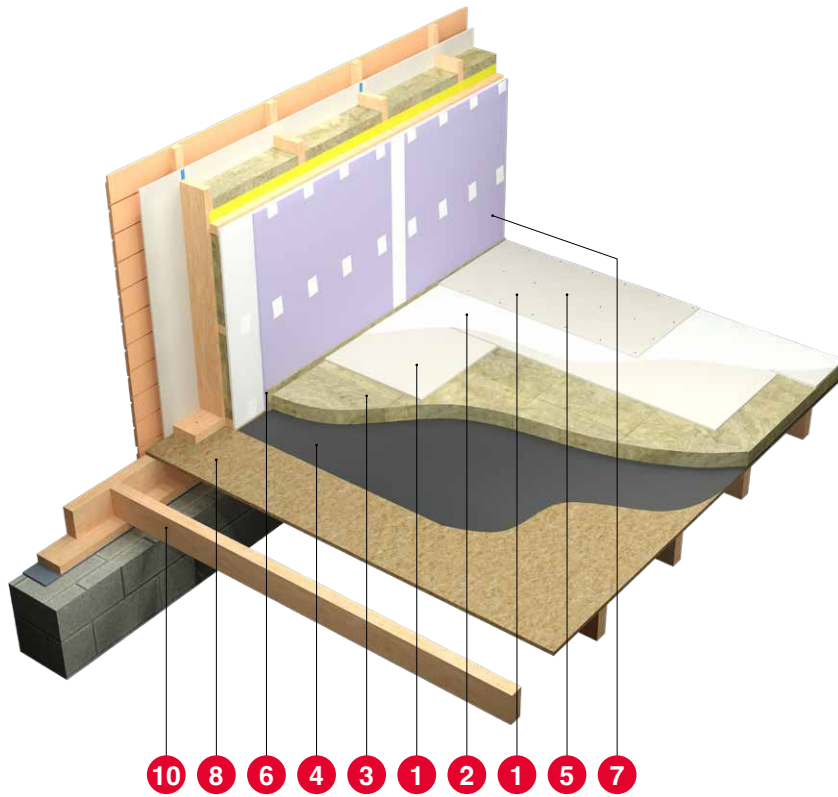
Wall elements:

1. NORGIPS plasterboard
2. Timber studs – spacing every 600 mm
3. Norgips wood screws 3,5 x 45 mm – spacing max. 25 cm
4. Mineral wool
5. Reinforcement made of OSB board or wooden board, min. 30 cm high and 2 cm thick
6. Mechanical connectors
7. Cabinet

FLOORS

types of dry screed execution

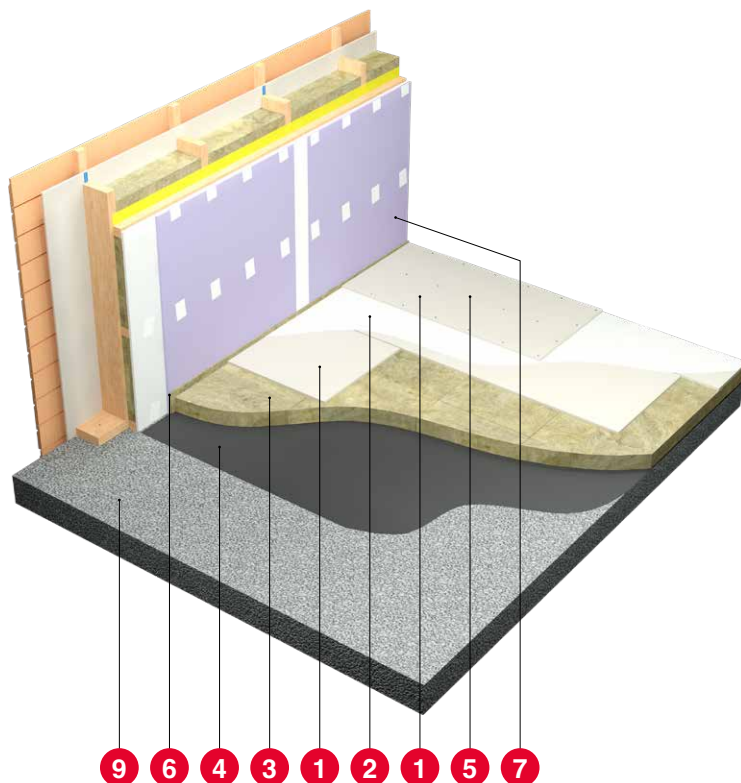
Dry screed on the foundation strip



Floor elements:

1. NORGIPS Floor plasterboards type DFIR – 2x 12,5 mm
2. Gypsum filler Norgips Start
3. Insulation board substrate (e.g. high density mineral wool / EPS 100 - 0.38)
4. Optional moisture insulation with insulating felt or PE foil
5. Norgips 3.5 x 25 mm wood screws or C 4/23 mm staples – maximum spacing 30 cm
6. Mineral wool expansion joint 10 mm
7. External wall
8. Timber floor, e.g. OSB board
9. Foundation slab
10. Timber frame

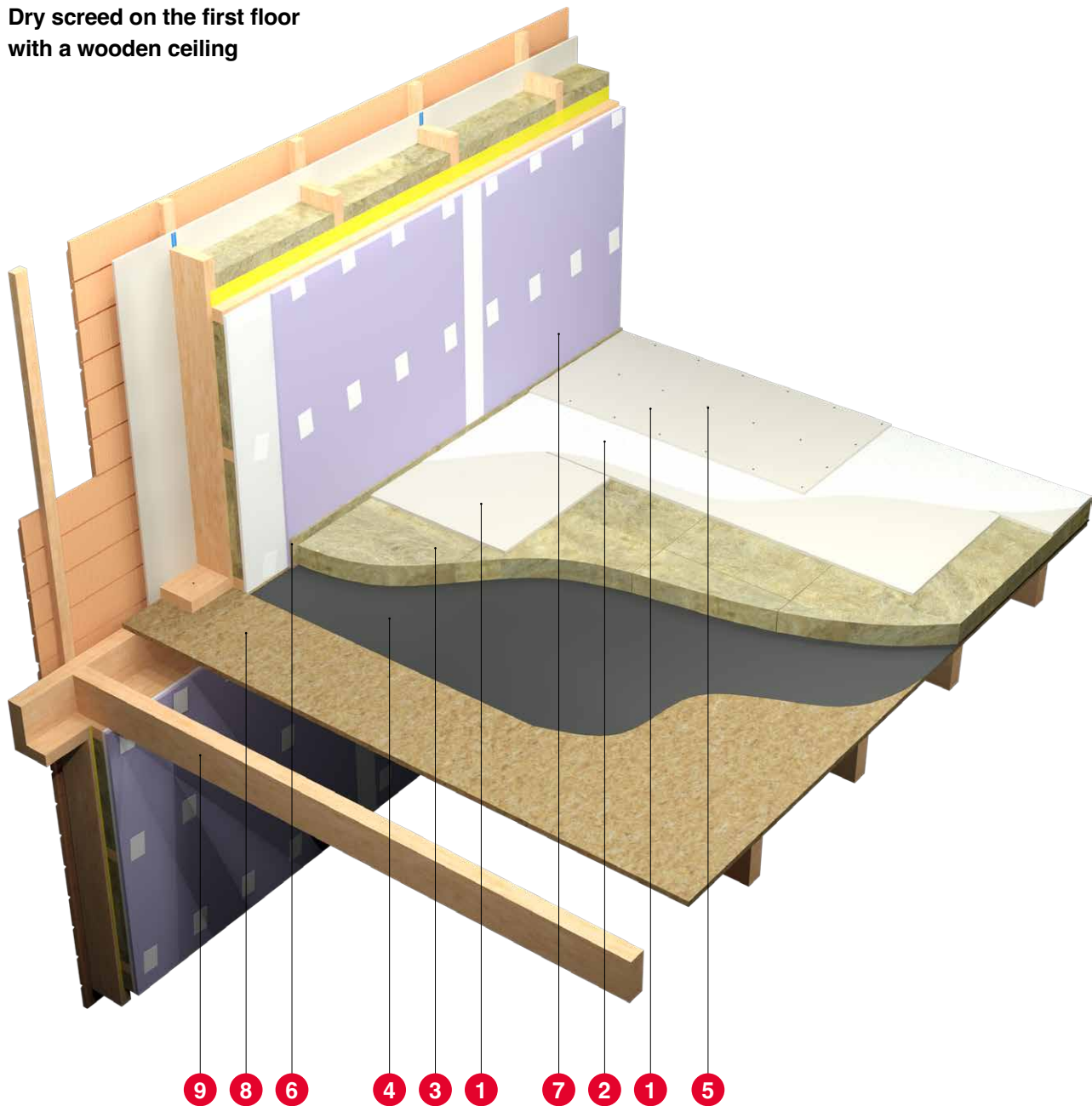
Dry screed on a wooden ceiling placed on a foundation slab



FLOORS

types of dry screed execution

Dry screed on the first floor with a wooden ceiling



Floor elements:

1. NORGIPS Floor plasterboards type DFIR – 2x 12,5 mm
2. Gypsum filler Norgips Start
3. Insulation board substrate (e.g. high density mineral wool / EPS 100 - 0.38)
4. Optional moisture insulation with insulating felt or PE foil
5. Norgips 3.5 x 25 mm wood screws or C 4/23 mm staples – maximum spacing 30 cm
6. Mineral wool expansion joint 10 mm
7. External wall
8. Even wooden substrate, e.g. OSB boards, wooden planks
9. Timber frame

DOOR OPENINGS

External walls

View 1 – external wall structure with door opening



View 2 – external wall structure with door opening with facade – view from the room side



Wall elements:

1. NORGIPS wind-protection board
2. Timber studs – spacing every 600 mm
3. Jamb stud
4. Timber lintel
5. Header
6. Vapor barrier foil
7. Facade
8. Mineral wool
9. Nogging

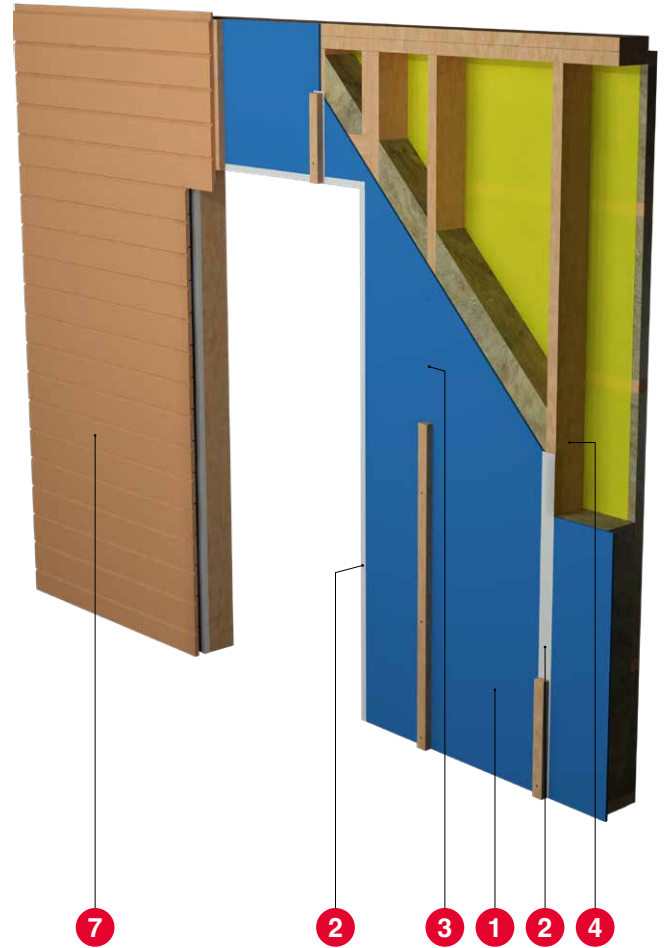
DOOR OPENINGS

External walls

View 3 – wall structure with a door opening with internal cladding – view from the interior



View 4 – external wall structure with door opening – view from the facade



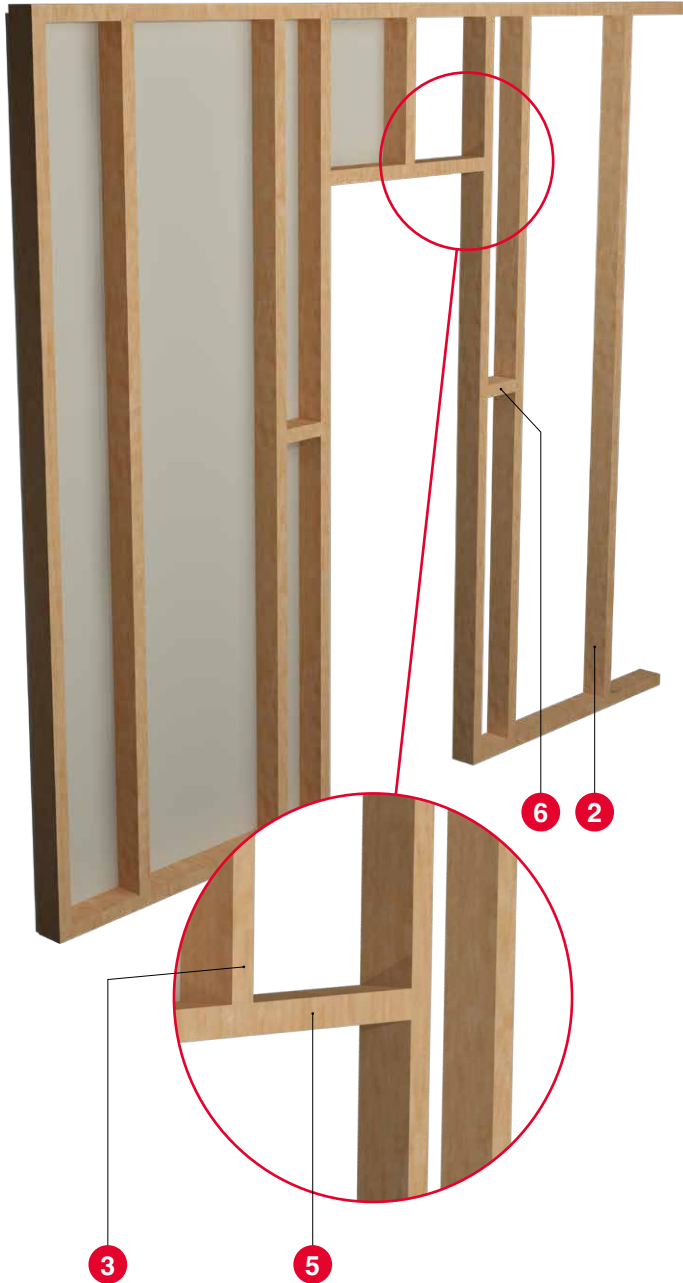
Wall elements:

1. NORGIPS wind-protection board
2. NORGIPS wind sealing tape
3. Mechanical connectors
4. Timber studs – spacing every 600 mm
5. Mineral wool
6. Vapor barrier foil
7. Facade
8. NORGIPS DUO lining

DOOR OPENINGS

Internal walls

View 1 – partition wall structure with door opening
– 1 crossbar



View 2 – partition wall structure with door opening
– 1 crossbar – lining



Wall elements:

1. NORGIPS plasterboard
2. Timber studs – spacing every 600 mm
3. Cripple stud*
4. Mineral wool
5. Header
6. Nogging

* In case one cripple stud is installed, the whole plasterboard must be used on one side of the opening. Otherwise, two cripple studs must be provided.

DOOR OPENINGS

Internal walls

View 1 – partition wall structure with door opening
– 2 crossbars



View 2 – partition wall structure with door opening
– 2 crossbars – lining



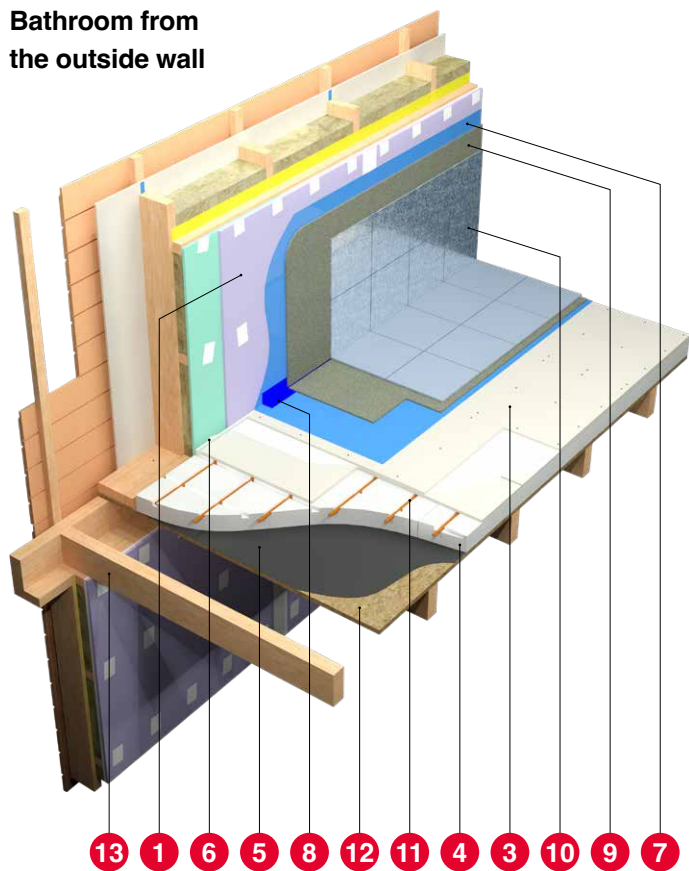
Wall elements:

1. NORGIPS DUO lining
2. Timber studs – spacing every 600 mm
3. Cripple stud
4. Mineral wool
5. Header
6. Nogging

BATHROOMS

Walls and ceilings

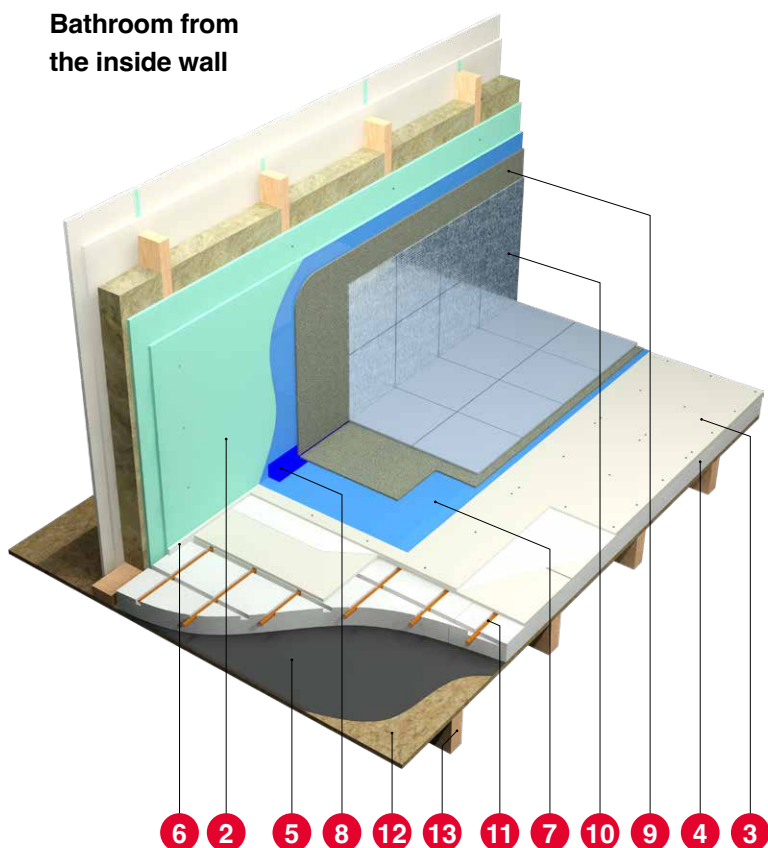
Bathroom from
the outside wall



Wall and ceiling elements:

1. External wall – lining with impregnated boards, eg. plasterboards type H2 + DFH2IRE, th. 2x12,5 mm
2. Partition wall – lining with impregnated boards, eg. plasterboards type H2, th. 2x12,5 mm
3. Dry screed – Floor plasterboards type DFIR, th. 2x12,5 mm
4. Insulation board substrate (e.g. high density mineral wool / EPS 100 - 0.38)
5. Moisture insulation with insulating felt or PE foil
6. Acoustic expansion joint made of EPS or mineral wool 10 mm
7. Waterproofing, e.g. liquid foil
8. Sealing tape
9. Ceramic tile adhesive
10. Ceramic tiles
11. Underfloor heating installation
12. Even wooden substrate, e.g. OSB boards, wooden planks
13. Wooden beams

Bathroom from
the inside wall



! ATTENTION:

One of the most important stages of performing insulation is the correct sealing of the joints between the floor and the wall, which is secured by gluing sealing tape along the perimeter of the room. The tape is glued using a ready-made liquid foil preparation.

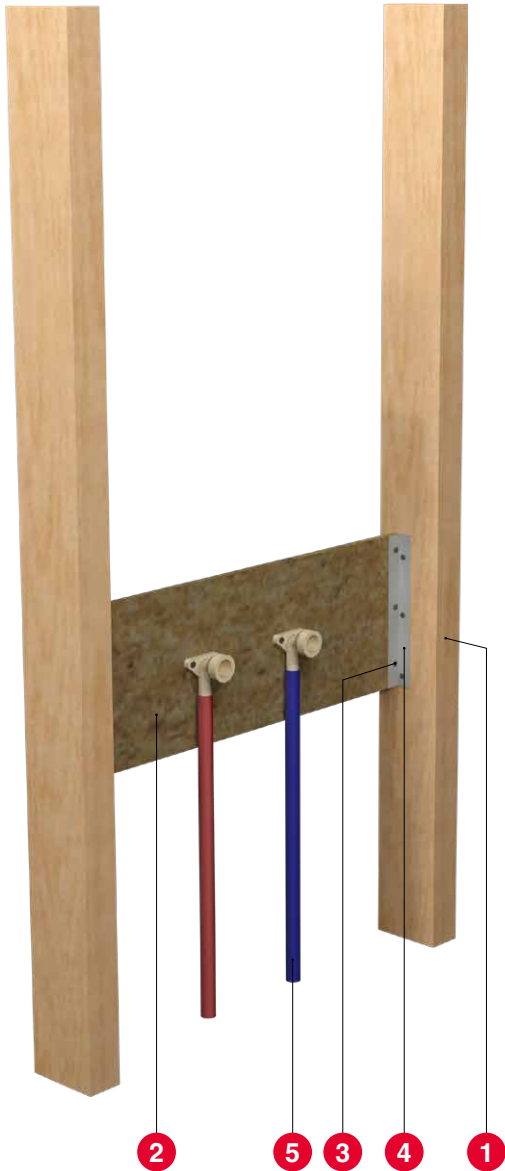
Waterproofing should be applied in particular to places exposed to water splashes directly around sanitary ware and as a substrate for gluing ceramic tiles.

Particular attention should be paid to the tightness of water pipes connections. Before installing plasterboards, a tightness test of the water installation should be carried out.

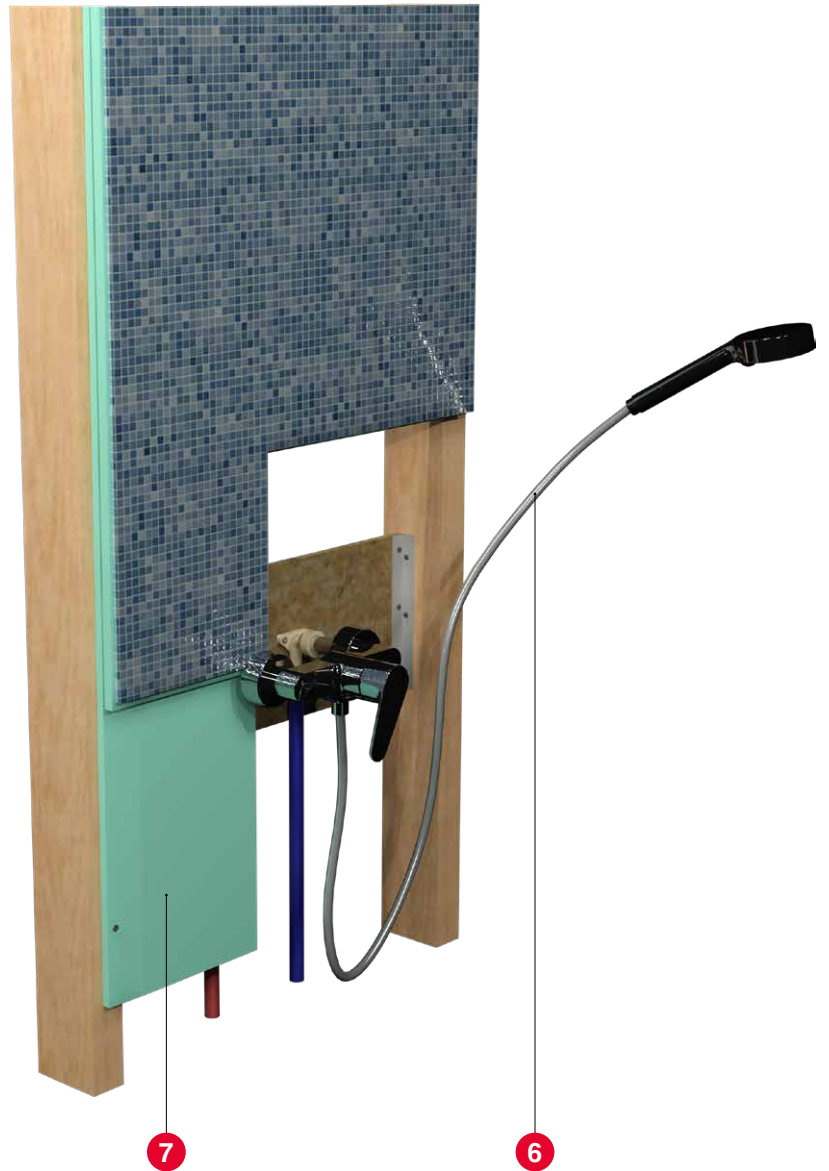
BATHROOMS

Fastening bathroom fittings

View 1 – wall reinforcement for the installation of sanitary fittings – sub-construction



View 2 – wall reinforcement for the installation of sanitary fittings – finishing



Wall elements:

1. Timber studs – spacing every 600 mm
2. Reinforcement made of OSB board or wooden board, min. 1 cm thick
3. Mechanical connectors (eg. wood screws)
4. Metal angle
5. Sanitary installation
6. Sanitary equipment
7. NORGIPS impregnated plasterboard, eg. type H2 th. 2x12,5 mm

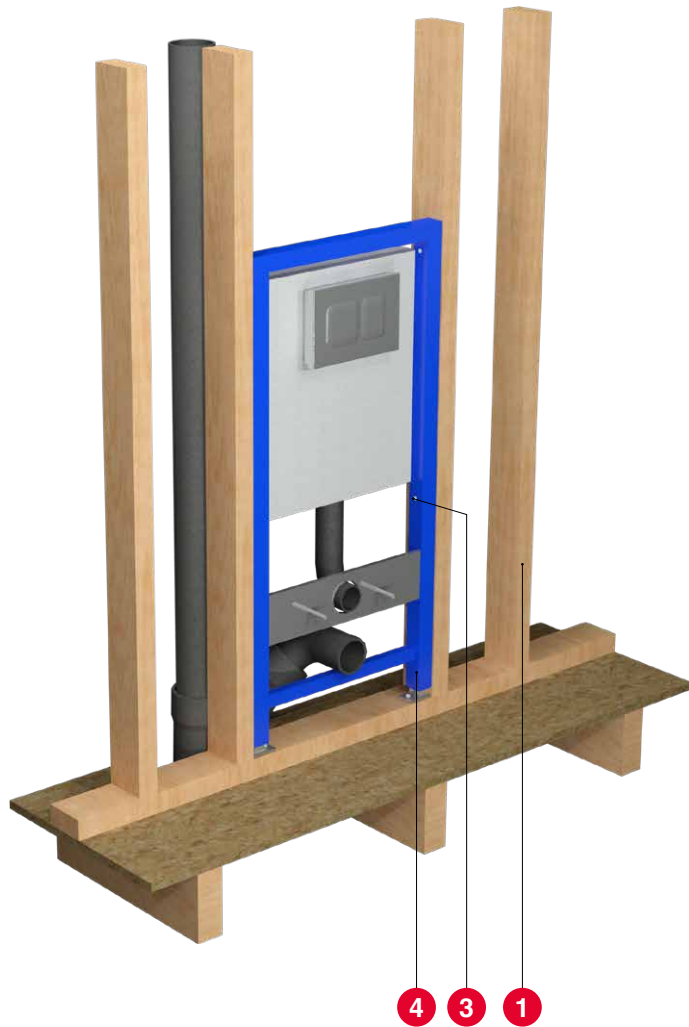
! ATTENTION:

Particular attention should be paid to the tightness of water pipe connections. Before installing plasterboards, a tightness test of the water installation should be carried out.

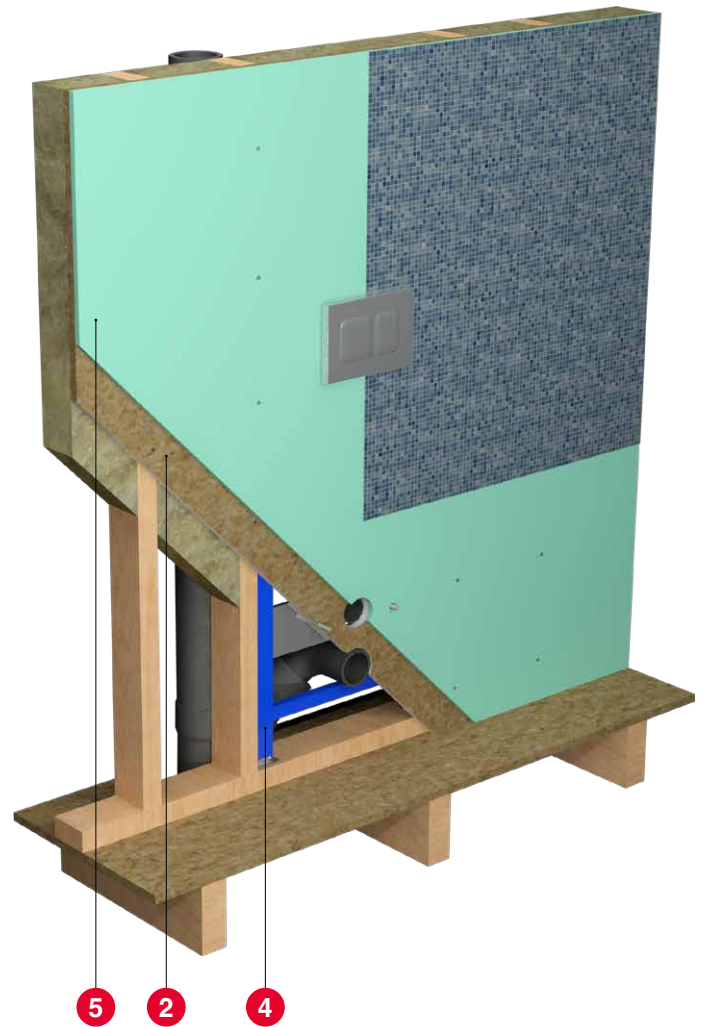
BATHROOMS

Flush-mounted frame installation

View 1 – wall reinforcement for the installation of sanitary WC frames – timber frame



View 2 – wall reinforcement for the installation of sanitary WC frames – finishing



Wall elements:

1. Timber studs – spacing every 600 mm
2. Reinforcement made of OSB or MFP board
3. Mechanical connector (in accordance with WC-flush producer's guidelines)
4. WC-flush frame
5. NORGIPS impregnated plasterboard, eg. type H2

! ATTENTION:

Concealed systems of fittings (sanitary frames) should be attached to wall structures according to the methods presented above. Frames in walls are attached to the substrate and vertical wooden battens, in accordance with their design in the building construction project.

Particular attention should be paid to the tightness of water pipe connections. Before installing plasterboards, a tightness test of the water installation should be carried out.

INSTALLATIONS

Electrical sockets

View 1 – Electrical sockets in the external wall



Wall elements:

1. External wall
2. Partition wall
3. Electrical socket
4. Electrical box casing made of NORGIPS plasterboard
5. NORGIPS screws (length depending on the number of boards to be installed)

View 2 – Electrical sockets in the partition wall

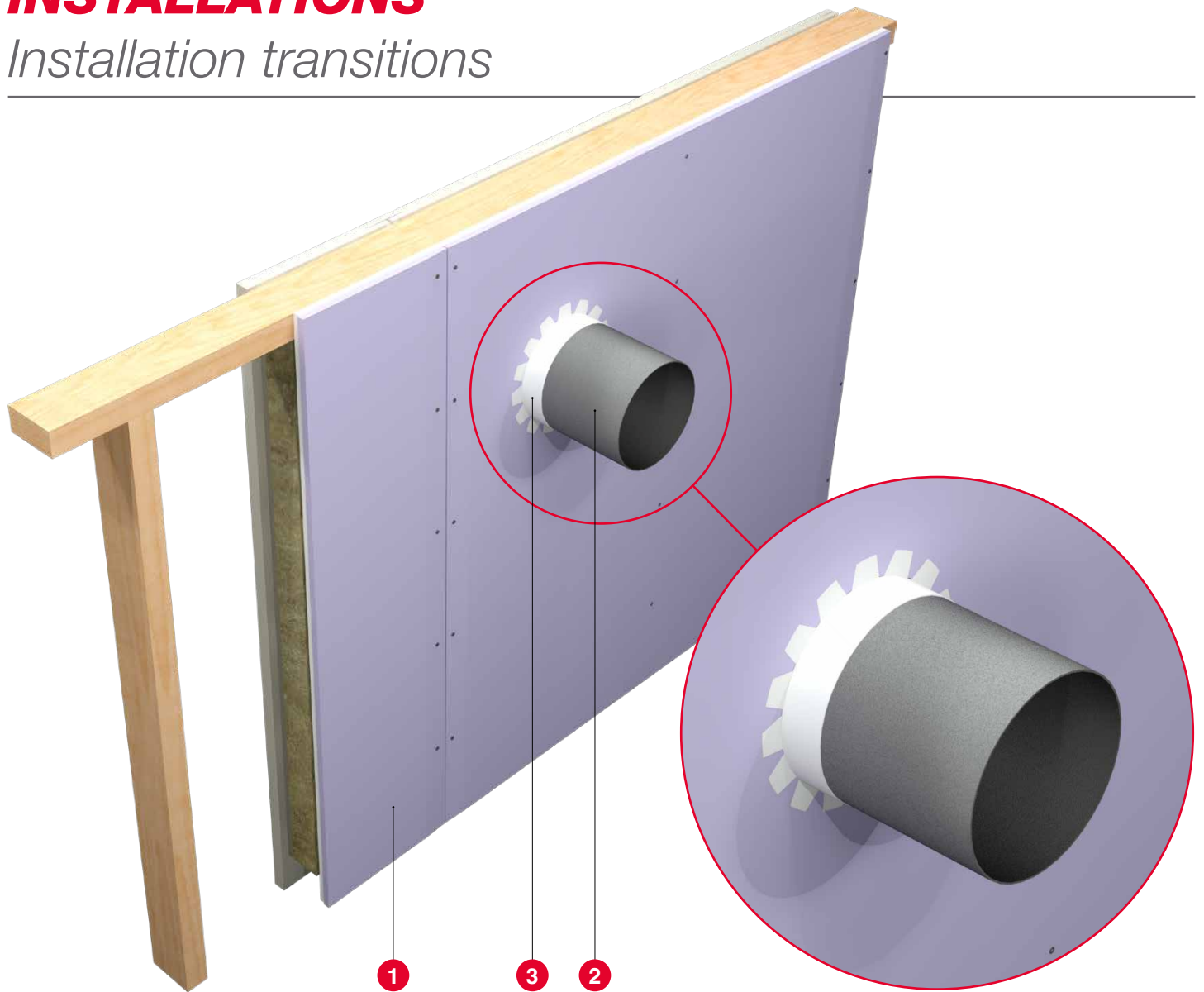


! ATTENTION:

Due to fire safety of wooden buildings, special attention should be paid to careful execution of electrical installations. Conducted cables and electrical connections should be insulated in accordance with the art of workmanship. Due to fire safety and acoustic insulation of partitions, it is recommended to build electrical sockets by making a casing from plasterboards, with fire resistance parameters DF.

INSTALLATIONS

Installation transitions



Wall elements:

1. Partition wall
2. Sanitary installation, eg. water pipes, ventilation ducts
3. Installation with insulating tape or certified collar

! ATTENTION:

It is permissible to conduct installations, i.e. ventilation or water and sewage installations through walls in wooden buildings made with plasterboard cladding. However, special attention should be paid to securing the installation against damage caused by movement of the building structure, maintaining appropriate expansion joints in installation passages. These passages should be secured with mineral wool and insulating tape. In the case of fire requirements, collars or other systems with appropriate certificates should be used.

ROOF SOFFIT

Attic ventilation

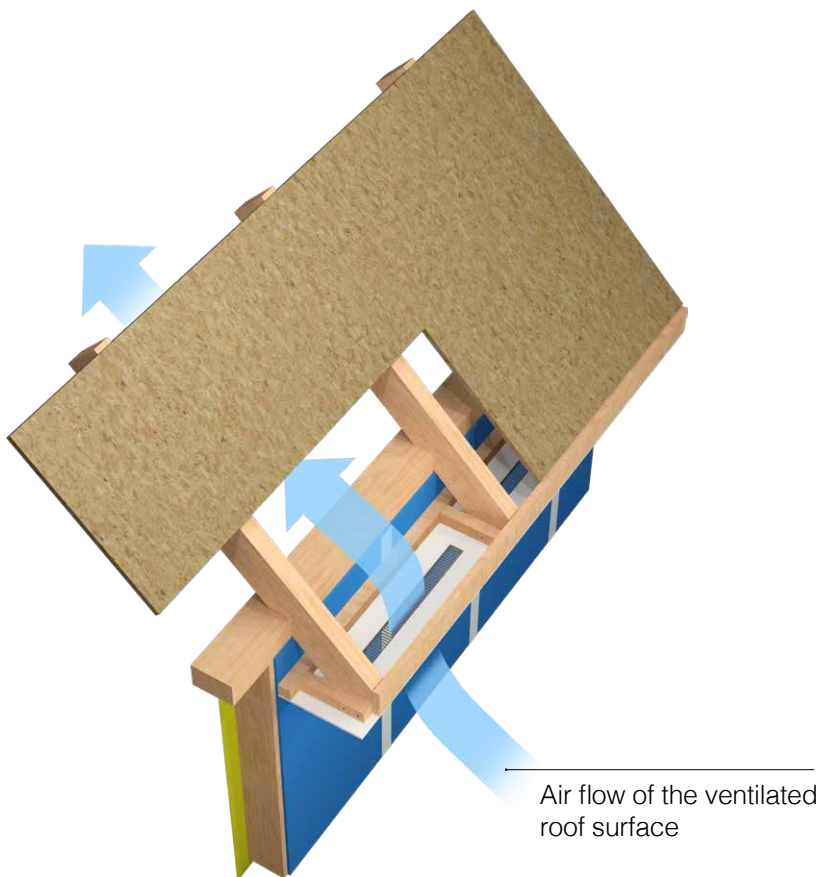


Structure elements:

1. Roof soffit made out of NORGIPS Weatherboard 365
2. External wall
3. Mechanical connector
4. Roof construction
5. Ventilation grill

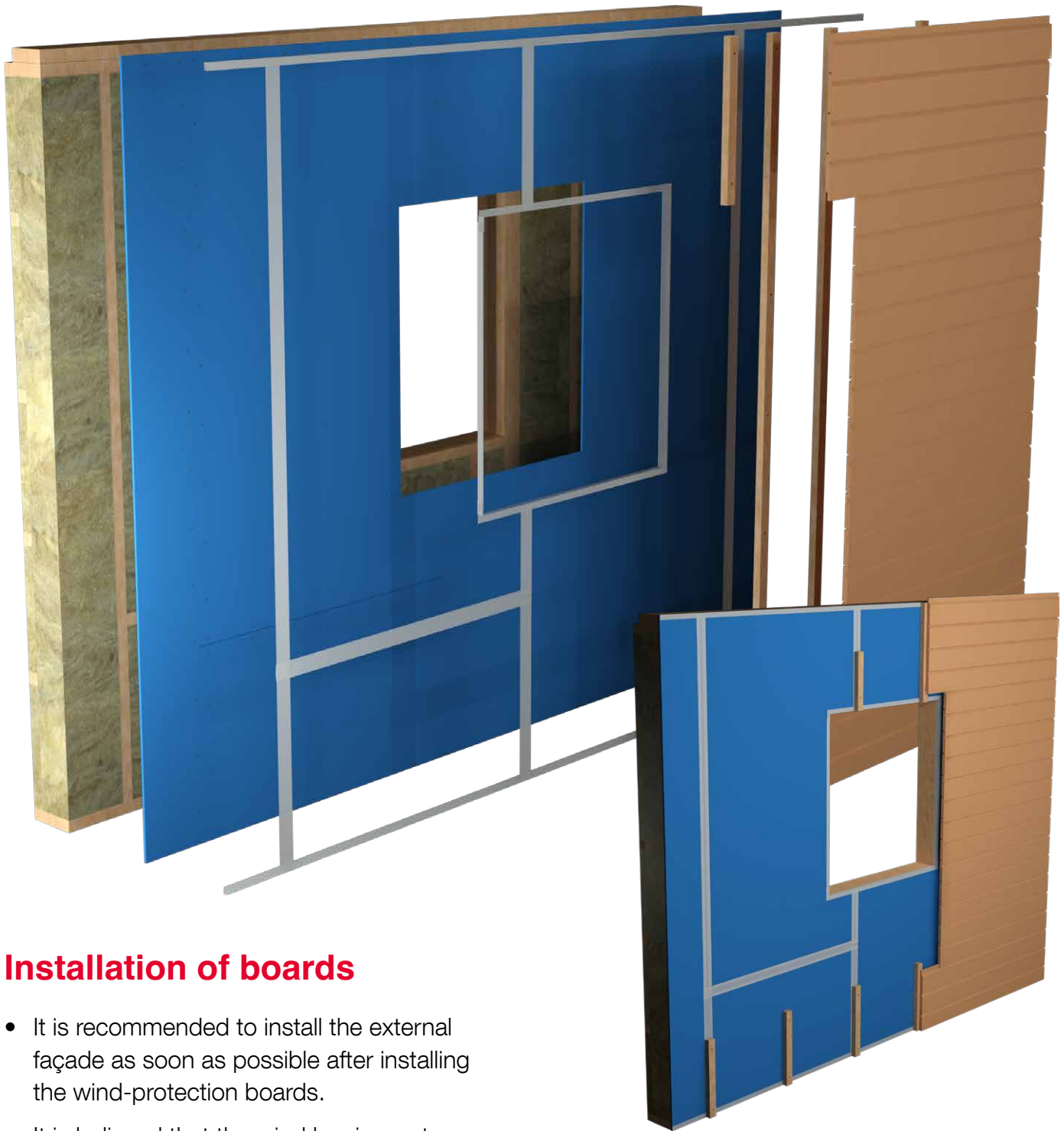
! ATTENTION:

An important aspect in achieving optimal operating conditions of a building is to ensure adequate ventilation of the space between the rafters of the roof structure. For this purpose, ventilation grilles should be installed in the soffit.



WIND-PROTECTION BOARD ASSEMBLY

Guidelines



Installation of boards

- It is recommended to install the external façade as soon as possible after installing the wind-protection boards.
- It is believed that the wind barrier system can be left uncovered for up to 12 months (for Weatherbord 365 panel) and up to 6 months (for GU-X panel) provided the building is not exposed to large amounts of heavy rain.
- Protecting the gypsum core of the board: it is important that all board joints are sealed with windproof tape and that all board edges,

such as transitions and edge terminations at the bottom, side and top of the wall, are protected from rain.

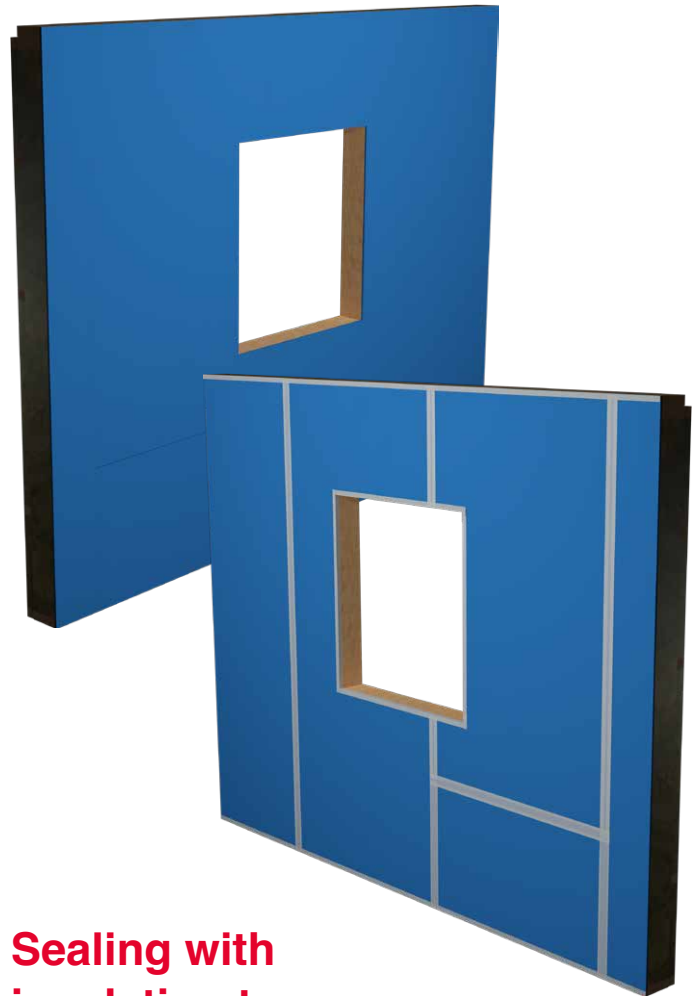
- Ventilated facade. Water that penetrates behind the facade must be able to drain freely between the cladding and the wind barrier panels.

WIND-PROTECTION BOARD ASSEMBLY

Guidelines

Mechanical fastening of boards to the structure

- The wind barrier panels are attached to vertical or horizontal studs or beams with a maximum distance between them of 600 mm.
- The boards are fastened using screws with dimensions of at least 3.9x25 mm and a head diameter of at least 8 mm and corrosivity class C3.
- For steel profiles, use an appropriate screw for steel profiles, for material thicknesses > 1 mm, use a screw with a self-drilling tip.
- Alternatively, the boards are attached to the wood using nails with a diameter of 2.5-35 mm and a head diameter of at least 6.8 mm.
- The screws should be installed so that their heads do not penetrate the board paper.
- The distance between screws must be max. 150 mm along the edges of the boards. In the inner part of the board max. 300 mm.
- Screws must not be placed closer than 10 mm from the edge of the board and at least 15 mm from the cut edge.
- During prefabrication of building elements, the boards can also be attached with staples. The staples must be placed at an angle of 30° to the longitudinal edge of the board and at a distance of at least 5 mm from the edge of the board to the nearest cramp bone.
- Type L38 staples must be used in accordance with ETA-16/0101 or staples with a corresponding documented load-bearing capacity.
- The staples are fixed at a maximum distance of 80 mm along the edge of the board. In the inner part of the board max. 100 mm.



Sealing with insulation tape

- NORGIPS wind sealing tape is used to seal board joints, as well as to seal transitions and joints at the points of attachment of door and window openings and installation transitions.
- The tape can be used at temperatures from -18 °C to +49 °C.
- The substrate to be glued must be clean, dry and free of loose dirt before installation.
- When joining the tape, the overlap must be at least 15 mm and a maximum of 25 mm.
- All joints of wind-protection boards and cut edges should be protected with tape.
- There is no need to use tape to secure the joints of the board with mechanical connectors on the inside of the board.

I. Skeleton and Modular Constructions

Skeleton construction refers to a building method where a timber frame built on-site supports the structure of the building. This frame creates the structure of the building, and other materials, such as boards, panels, or bricks, are attached to it to finish or stiffen the construction.

In contrast, modular timber frame construction involves using prefabricated panels or 3D modules that are assembled off-site and then transported to the construction site for installation. This method allows for faster and more efficient building, as well as increased quality control of the entire project.

Both skeleton and modular construction are becoming increasingly popular methods for building residential and commercial properties due to their ecological, economic aspects, and flexibility in aesthetic design.

II. Timber characteristics

In frame constructions, the type of timber used plays a significant role in the quality and performance of the building. Different species of wood have varied properties regarding strength, durability, stability, and fire resistance. The biggest advantages of using solid wood in construction are high load-bearing capacity, valued aesthetics, and the fact that it is a fully natural product with a negative CO₂ footprint.

In Europe, solid wood is classified according to the European standard EN 338, which categorizes wood into strength classes based on properties such as density, moisture content, and stiffness (see „Strength Classes” table). A popular material used in construction is solid coniferous wood, such as fir, spruce, or pine of class C24. It is readily available and characterized by ease of processing.

Structural wood can also be chemically treated to increase its resistance to biological corrosion, pests, and the effects of fire in the event of a fire.

Where timber constructions are subjected to higher strength requirements (e.g., greater loads and spans), other engineered timber materials are used. These include wood glued at wedge joints, laminated veneer lumber (glulam), and cross-laminated timber (CLT).

III. Fire Safety

Houses built using timber technology can demonstrate good results in fire safety tests, due to the natural properties of wood and the way the structure is secured.

Although wood is a combustible material (with a fire reaction class of D-s2, d0), it is also a natural insulator, which means it burns relatively slowly compared to other building materials. In the event of a fire, wood forms a layer of charcoal on the surface, protecting the inner part of the wood and slowing the burning rate.

Fire-treated wood features delayed ignition and reduced spread of fire in the event of a blaze.

From a fire safety perspective, very good results in securing wooden structures are achieved by using fire-protective cladding with gypsum boards. This can allow compliance with the required fire resistance classes R, E, I of partitions, thereby reducing the spread of fire and increasing the protection of inhabitants.

This effect is achieved thanks to the basic property of gypsum. This remarkable protective capability under fire results from a multi-stage dehydration reaction (calcination), during which dihydrate calcium sulfate ($\text{CaSO}_4 \times 2\text{H}_2\text{O}$) is transformed into hemihydrate calcium sulfate ($\text{CaSO}_4 \times 0.5\text{H}_2\text{O}$), and then into anhydrite (CaSO_4) due to the release of water during heating, as shown below. A significant amount of energy is required for this

TIMBER FRAME TECHNOLOGY

process. Consequently, the material's destruction time is extended, as is the time available for evacuation from the building.

IV. Acoustic Insulation

Acoustic insulation in timber frame constructions is a vital element that ensures comfort and privacy for residents by reducing noise transmission between rooms. Although timber structures offer a variety of benefits, including sustainable production and design flexibility, they can pose challenges regarding acoustic performance due to the lightness and porosity of natural wood.

The main factors influencing the final acoustic insulation of a wall are its thickness and the stud spacing. A wider wall corresponds to a greater distance between the cladding, allowing for the use of thicker mineral wool insulation material. A larger stud spacing also positively impacts the improvement of acoustic insulation.

High stiffness of the partition negatively affects its acoustic insulation. An effective strategy for improving acoustic insulation in timber partition walls is to introduce separation between structural elements. This can be achieved by installing flexible acoustic profiles, sound insulation clips, or acoustic hangers to separate the gypsum boards from the wooden structure.

Ensuring proper sealing and airtightness of wooden partitions, especially at the installation transition points, can help reduce airborne sound transmission and improve the overall acoustic performance of the building partition.

V. Gypsum Boards as a Vapor-Permeable Membrane in External Wall Technology

External walls in construction require appropriate wind barriers and vapor-permeable membranes to protect against moisture infiltration and maintain energy efficiency.

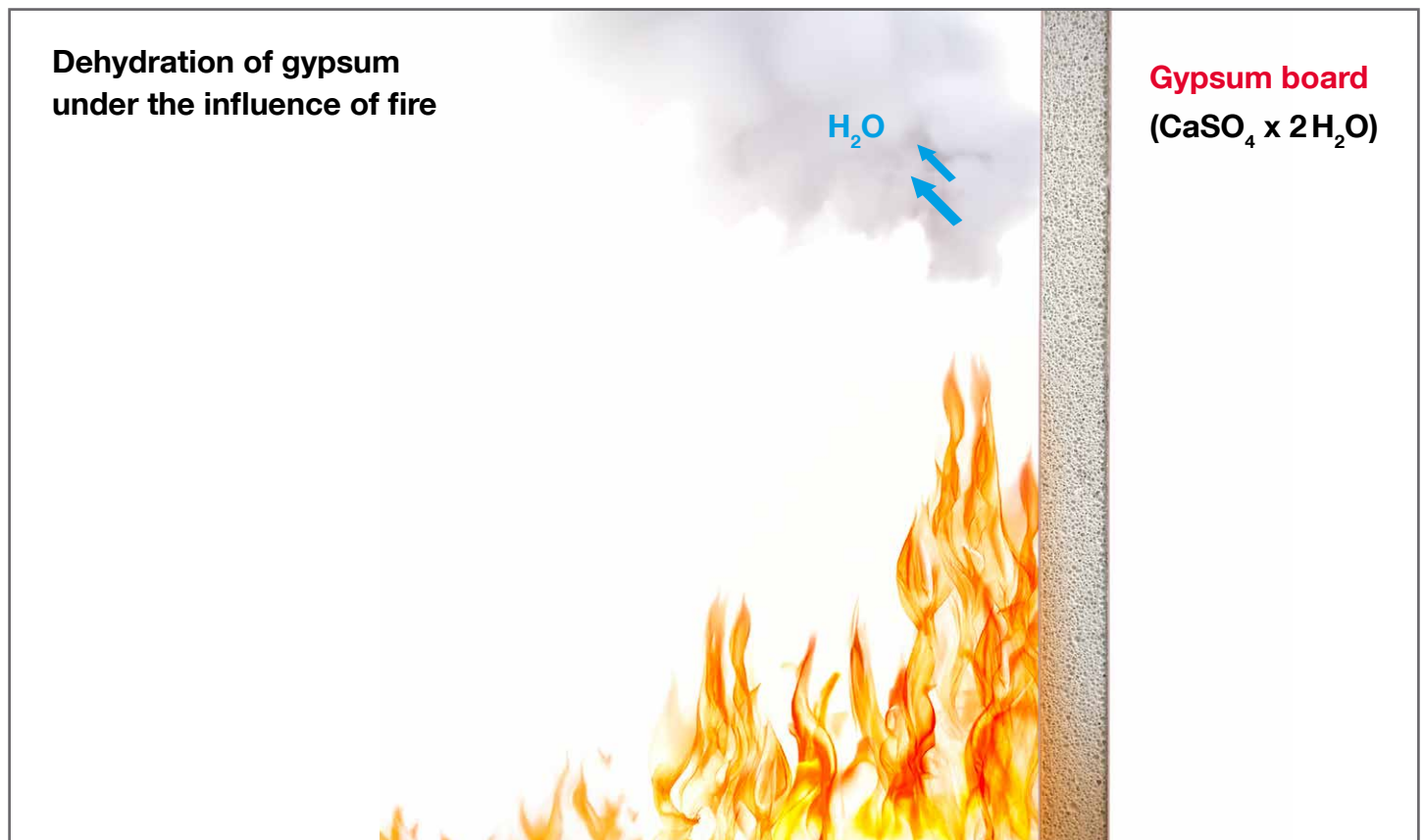
Gypsum panels, such as Norgips Weatherboard 365, Norgips GU-X, and Norgips GU, due to their low diffusion resistance coefficient ($\mu=10$, $S_d=0.095$ m), meet the requirements set for vapor-permeable membranes.

These boards provide proven protection for the structure against wind, dust, and moisture penetration, while also allowing water vapor to pass through. They can thus be used as wind insulation in the construction of external walls.

This is a common practice (in combination with a ventilated façade) found in Scandinavian countries.

Strength Class property values for solid softwood (EN-338)

Properties	Factor	Wood classes											
		C14	C16	C18	C20	C22	C24	C27	C30	C35	C40	C45	C50
Strength [MPa]													
Bending	$f_{m,k}$	14	16	18	20	22	24	27	30	35	40	45	50
Tension parallel to grain	$f_{t,0,k}$	8	10	11	12	13	14	16	18	21	24	27	30
Tension perpendicular to grain	$f_{t,90,k}$	0,4	0,4	0,5	0,5	0,5	0,5	0,6	0,6	0,6	0,6	0,6	0,6
Compression parallel to grain	$f_{c,0,k}$	16	17	18	19	20	21	22	23	25	26	27	29
Compression perpendicular to grain	$f_{c,90,k}$	2,0	2,2	2,2	2,3	2,4	2,5	2,6	2,7	2,8	2,9	3,1	3,2
Shear	$f_{v,k}$	1,7	1,8	2,0	2,2	2,4	2,5	2,8	3,0	3,4	3,8	3,8	3,8
Stiffness properties [GPa]													
Mean modulus of elasticity parallel	$E_{0,mean}$	7	8	9	9,5	10	11	11,5	12	13	14	15	16
5% modulus of elasticity parallel	$E_{0,05}$	4,7	5,4	6,0	6,4	6,7	7,4	7,7	8,0	8,7	9,4	10,0	10,7
Mean modulus of elasticity perpendicular	$E_{90,mean}$	0,23	0,27	0,30	0,32	0,33	0,37	0,38	0,40	0,43	0,47	0,50	0,53
Mean shear modulus	G_{mean}	0,44	0,5	0,56	0,59	0,63	0,69	0,72	0,75	0,81	0,88	0,94	1,00
Density [kg/m ³]													
Characteristic density	ρ_k	290	310	320	330	340	350	370	380	400	420	440	460
Mean density	ρ_{mean}	350	370	380	390	410	420	450	460	480	500	520	550

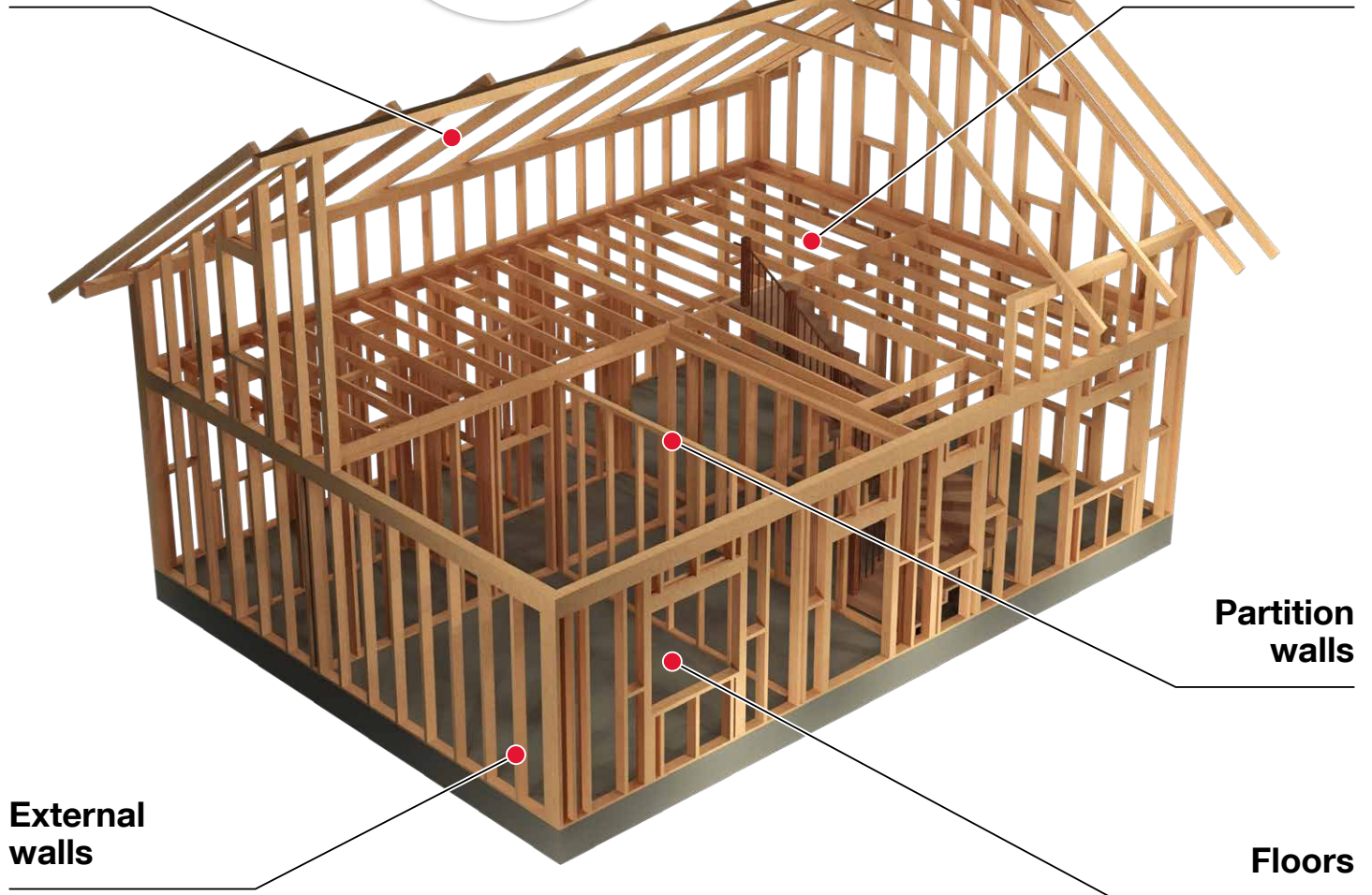


NORGIPS solutions



Attic partitioning

Ceiling covering



External walls

Partition walls

Floors

NORGIPS

proven materials for skeleton
and modular structures!

Learn more about our solutions and check
the full range of NORGIPS drywall materials at

www.norgips.pl

NORGIPS®

1 ESTONIA
Tanel Kuusik
Country Manager
+372 562 043 35
tanel.kuusik@norgips.com

2 LATVIA
Artis Meikšāns
Country Manager
+371 67 47 06 14
artis.meiksans@norgips.com

3 LITHUANIA
Aurelijus Motiejūnas
Country Manager
+370 69 810 088
aurelijus.Motiejunas@norgips.com

4 CZECH REPUBLIC
Pavel Holeš
Country Manager
+420 732 213 409
pavel.holes@norgips.com

5 SLOVAKIA
Aida Halák
Sales Representative
+421 948 768 045
aida.halak@norgips.com

6 HUNGARY
Tamás Horváth
Country Manager Hungary
+36 20 917 2520
tamas.horvath@norgips.com

7 CROATIA
Denis Halas
Sales Representative
+48 695 230 568
denis.halas@norgips.com

8 BOSNIA AND HERZEGOVINA
Maria Mitova
Country Manager
+359 (0) 885 713 267
maria.mitova@norgips.com

9 ROMANIA
Nicolae Alexandrescu
Country Manager
+40 726 502 134
nicolae.alexandrescu@norgips.com

Alexandru Pitac
Technical Advisor
+40 756 125 288
alexandru.pitac@norgips.com

10/11 BULGARIA and SERBIA
Maria Mitova
Country Manager
+359 (0) 885 713 267
maria.mitova@norgips.com

Jānis Muižnieks
Sales Coordinator
+371 26 549 917
janis.muiznieks@norgips.com

Andrej Litovčenko
Sales Coordinator
+370 620 718 60
andrej.litovcenko@norgips.com

Jaroslav Slanina
Sales Representative
+420 774 731 232
jaroslav.slantina@norgips.com

Gábor Donka
Technical Advisor
+36 30 543 5498
gabor.donka@norgips.com

Cristian Roman
Product Manager
+40 746 119 932
cristian.roman@norgips.com

Nikolay Kolev
Sales Representative
+359 (0) 885 929 680
nikolay.kolev@norgips.com

Dariusz Nasilowski
Export Director CEE Region
+48 22 36 96 330
dariusz.nasilowski@norgips.com



COMPANY HEADQUARTERS IN WARSAW

Norgips Sp. z o.o.
ul. Krakowiaków 50
02-255 Warszawa
+48 22 36 96 330
norgipspolska@norgips.com

2025

www.norgips.eu