



**GROUP OF TESTING LABORATORIES
GRYFITLAB**

ul. Prosta 2, Łozienica, 72-100 Goleniów
tel. (091) 431 82 29, fax (091) 418 97 57, mobile:+48 607-900-480
www.gryfitlab.com, e-mail: contact@gryfitlab.com

Fire resistance classification No. LBO – 059 – KZ/25E

Classified product:

Non-loadbearing partition walls Norgips, double sided cladded with gypsum plasterboards Norgips GKF type DF, Norgips GKFI type DFH2 or Norgips Acoustic Super type DFH2IRE

Sponsor:

Norgips Sp. z o.o.
ul. Krakowiaków 50
02-255 Warszawa

Prepared by:

Group of Testing Laboratories Gryfitlab
ul. Prosta 2, Łozienica
72-100 Goleniów

Place and date of issue:

Łozienica, 24.09.2025

Copy No. 1

The classification was printed in 3 copies. Copies Nos. 1, 2 – for the Sponsor, Copy No. 3 – AA

GRYFITLAB Sp. z o.o. - ul. Prosta 2, Łozienica - 72-100 Goleniów - Polska - tel.: (48) 91 431 82 45 - fax.: (48) 91 431 82 46

NIP 955-21-28-725, KRS:0000236527, Sąd Rejonowy w Szczecinie, XVII Wydział Gospodarczy KRS, Kapitał zakładowy 1 200 000 PLN

1. This classification has been prepared based on the following documents:

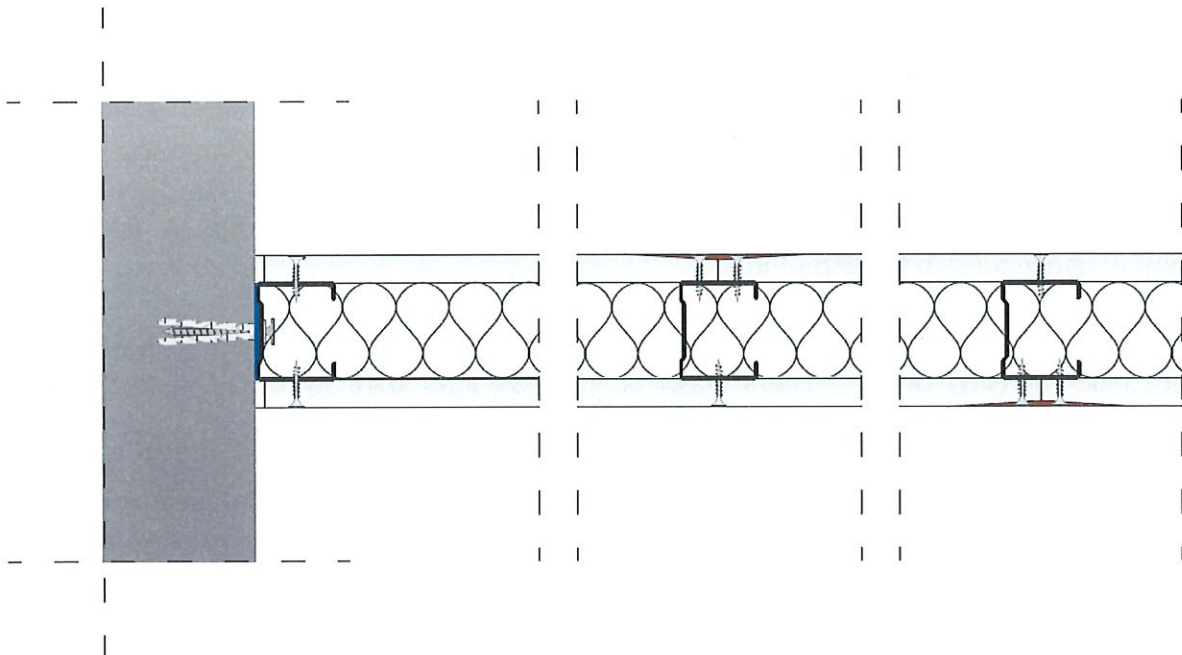
- 1.1. Standard PN-EN 1364-1:2015-08 Fire resistance tests for non-loadbearing elements – Part 1: Walls.
- 1.2. Standard PN-EN 1363-1:2020-07 Fire resistance tests – Part 1: General requirements.
- 1.3. Standard PN-EN 13501-2: 2023-09 Fire classification of construction products and building elements – Part 2: Classification using data from fire resistance tests, excluding ventilation services.
- 1.4. Standard PN-EN 13279-1:2009 Gypsum binders and gypsum plasters – Part 1: Definitions and requirements.
- 1.5. Standard PN-EN 13963:2014-10 Jointing materials for gypsum boards – Definitions, requirements and test methods.
- 1.6. Standard PN-EN 14566+A1:2012. Mechanical fasteners for gypsum plasterboard systems – Definitions, requirements and test methods.
- 1.7. Standard PN-EN 14195:2015-02 Metal framing components for gypsum board systems – Definitions, requirements and test methods.
- 1.8. Report No. LP-1121.4/08 Non-loadbearing partition wall SD-1x12.5 GKF DF CW50 W50, double sided clad with 1 x 12.5 mm thick gypsum plasterboards Norgips S GKF type DF manufactured by Norgips, with the framework made of system steel profiles CW50 and UW50, and filled with 50 mm thick mineral wool Rockton. Fire Tests Laboratory of the Building Research Institute (Instytut Techniki Budowlanej), Warsaw 2014.
- 1.9. Standard PN-EN 520+A1:2012 Gypsum plasterboards – Definitions, requirements and test methods.
- 1.10. Standard PN-EN 10143:2006 Continuously hot-dip coated steel sheet and strip – Tolerances on dimensions and shape.
- 1.11. Technical documentation provided by Norgips Sp. z o.o.

2. Technical description of partition walls Norgips, double sided cladded with gypsum plasterboards Norgips GKF type DF, Norgips GKFI type DFH2 or Norgips Acoustic Super type DFH2IRE

2.1 Partition walls

SD-1x12.5 GKF DF/CW 50 W 50, SD-1x12.5 GKF DF/CW 75 W 50, SD-1x12.5 GKF DF/CW 100 W 50, SD-1x12.5 GKFI DFH2/CW 50 W 50, SD-1x12.5 GKFI DFH2/CW 75 W 50 and SD-1x12.5 GKFI DFH2/CW 100 W 50, SD-1x12.5 DFH2IRE/CW 50 W 50, SD-1x12.5 DFH2IRE/CW 75 W 50, SD-1x12.5 DFH2IRE/CW 100 W 50, SD-1x12.5 GKF DF/VP 66 W 50, SD-1x12.5 GKF DF/VP 70 W 50, SD-1x12.5 GKF DF/VP 95 W 50, SD-1x12.5 GKF DF/VP 120 W 50, SD-1x12.5 GKFI DFH2/VP 66 W 50, SD-1x12.5 GKFI DFH2/VP 70 W 50 and SD-1x12.5 GKFI DFH2/VP 95 W 50, SD-1x12.5 GKFI DFH2/VP 120, SD-1x12.5 DFH2IRE/VP 66 W 50, SD-1x12.5 DFH2IRE/VP 70 W 50, SD-1x12.5 DFH2IRE/VP 66 W 95 and SD-1x12.5 DFH2IRE/VP 120 W 50

double sided cladded with 1x12.5 mm thick gypsum plasterboards Norgips GKF type DF or GKFI type DFH2 or Acoustic Super type DFH2IRE, with the single framework and filled with at least 50 mm thick mineral wool



The walls are built on the frameworks made of system profiles Norgips **CW 50 and UW 50, CW 75 and UW 75, CW 100 and UW 100** or **VP 66 and HP 66, VP 70 and HP 70, VP 95 and HP 95, VP 120 and HP 120** which were made of nominally 0.55 mm or 0.6 mm thick cold bent galvanized steel.

The **CW 50 and UW 50, CW 75 and UW 75, CW 100 and UW 100** or **VP 66 and HP 66, VP 70 and HP 70, VP 95 and HP 95, VP 120 and HP 120** perimeter profiles are fixed to the ceiling, floor and side walls by means of mechanical connectors such as, e.g.: wall plugs, dowels, connectors shot into the connected places, etc. The aforementioned mechanical connectors are placed every **80 cm**.

3 mm thick Norgips polyethylene sealing tape is placed between the perimeter steel profiles and the ceiling, floor and side walls. Profiles **CW 50, CW 75, CW 100 or VP 66, VP 70, VP 95, VP 120** hereafter referred to as posts, are positioned vertically and slid between the bottom and top shelves of, respectively, profiles **UW 50, UW 75, UW 100 or HP 66, HP 70, HP 95, HP 120** (see **Figure 2b**). The axes of the adjacent posts are placed maximally every **60 cm** or every **62.5 cm**. The length of profiles **CW 50, CW 75, CW 100 or VP 66, VP 70, VP 95, VP 120** should be 1.5 cm less than the distance between the webs of the bottom and top profiles: **UW 50, UW 75, UW 100 or HP 66, HP 70, HP 95, HP 120** (see **Figure 2b**).

The boards are fixed in such a way that the vertical connections from two sides of the walls are not made on one and the same post. The vertical connections are shifted in relation to one another by at least **30 cm**; usually they are shifted by **60 cm** or **62.5 cm**.

If there are horizontal connections on the surface of the wall, between the adjacent boards, they have to be shifted in relation to one another by at least **40 cm**. Gypsum plasterboards **Norgips GKF type DF (thickness: 1 x 12. mm)** or **GKFI type DFH2 (thickness: 1 x 12.5 mm)** or **Norgips Acoustic Super type DFH2IRE (thickness 1 x 12.5 mm)** are fixed to the bottom **UW** or **HP** profiles and **CW** or **VP** profiles (posts) by means of screws e.g. Norgips \varnothing 3.5 x 25 mm placed every **25 cm**. Screw heads, the vertical and horizontal connections between the **GKF type DF** boards or the **GKFI type DFH2** boards or the **Norgips Acoustic Super type DFH2IRE** boards are covered with gypsum filler e.g. **Norgips Start, Norgips Super Filler** or **Norgips Start & Finish (Norgips Light Ready Mix)**. The Norgips system self-adhesive reinforcing tapes made of glass fibre or interfacing are applied at the connections between the boards. For final covering it is recommended to use ready mix jointing compound e.g. **Norgips Extra Finish, Norgips Start & Finish (Norgips Light Ready Mix), Norgips Finish MEGA (Norgips Easy Finish), Norgips Finish MEGA (Norgips Easy Finish)** or gypsum finish **Norgips Finish**.

The partition walls are filled with at least **50 mm** thick boards made of mineral rock wool. The self-weight load (density) of the mineral wool is not less than **0.45 kN/m³**. Constructional details regarding the partition walls are presented in **Figures 1 and 2**.

The fire resistance classification of the walls is provided in **Tables 1 and 2 – see columns 9 and 11**, the maximum height of the walls is specified in **Tables 1 and 2 – see columns 10 and 12**.

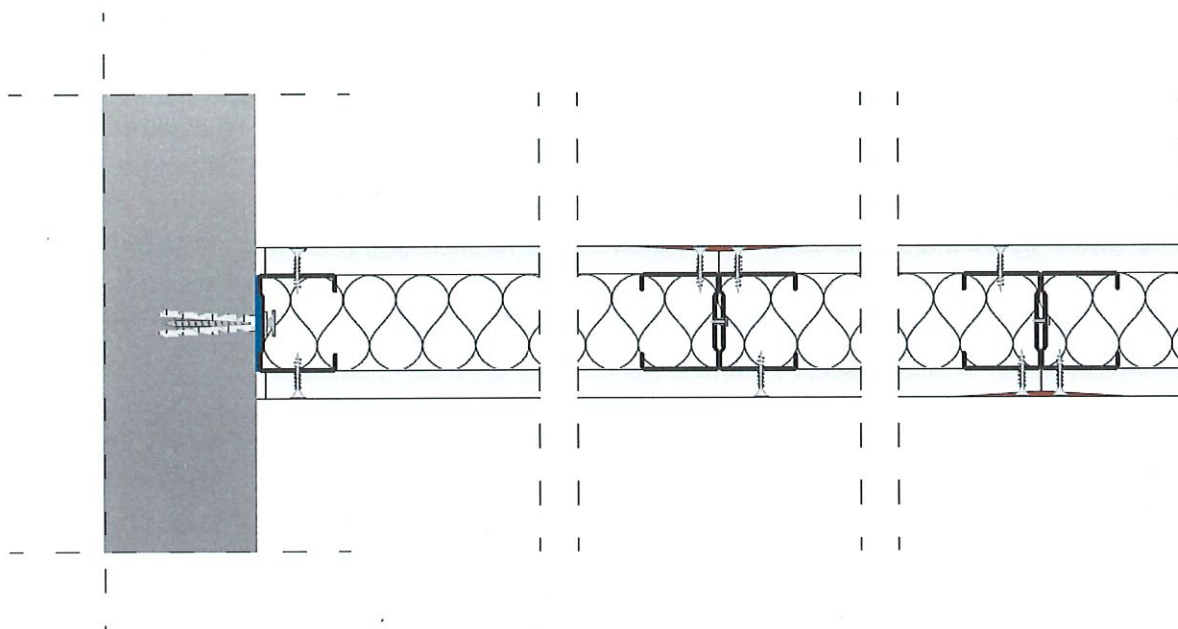
Electric cables and wall boxes for electric installations can be installed in the wall. The wall boxes should be protected with a layer of gypsum filler e.g. **Norgips Start** or **Norgips Super Filler** (thickness: at least **15 mm**) or should be encased with gypsum plasterboards, and the minimum distance between the edges of the wall boxes should be **60 mm** (see **Figure 6**).

In places where there is the constructional dilatation of the building and when the length of a straight (without dilatation) section of the wall is more than **15 m** one should apply dilatation (see **Figures 4 and 5**).

2.2 Partition walls

SD-1x12.5 GKF DF/CW 50 + CW 50 W 50, SD-1x12.5 GKF DF/CW 75 + CW 75 W 50,
SD-1x12.5 GKF DF/CW 100 + CW 100 W 50, SD-1x12.5 GKFI DFH2/CW 50 + CW 50 W 50,
SD-1x12.5 GKFI DFH2/CW 75 + CW 75 W 50, SD-1x12.5 GKFI DFH2/CW 100 + CW 100 W 50,
SD-1x12.5 DFH2IRE/CW 50 + CW 50 W 50, SD-1x12.5 DFH2IRE/CW 75 + CW 75 W 50,
SD-1x12.5 DFH2IRE/CW 100 + CW 100 W 50 or SD-1x12.5 GKF DF/ VP 66 + VP 66 W 50,
SD-1x12.5 GKF DF/ VP 70 + VP 70 W 50, SD-1x12.5 GKF DF/ VP 95 + VP 95 W 50,
SD-1x12.5 GKF DF/ VP 120 + VP 120 W 50, SD-1x12.5 GKFI DFH2/ VP 66 + VP 66 W 50,
SD-1x12.5 GKFI DFH2/ VP 70 + VP 70 W 50, SD-1x12.5 GKFI DFH2/ VP 95 + VP 95 W 50,
SD-1x12.5 GKFI DFH2/ VP 120 + VP 120 W 50, SD-1x12.5 DFH2IRE/ VP 66 + VP 66 W 50,
SD-1x12.5 DFH2IRE/ VP 70 + VP 70 W 50, SD-1x12.5 DFH2IRE/ VP 95 + VP 95 W 50,
SD-1x12.5 DFH2IRE/ VP 120 + VP 120 W 50.

double sided cladded with 1x12.5 mm thick gypsum plasterboards Norgips GKF type DF or GKFI type DFH2 or Acoustic Super type DFH2IRE, with the single framework made of double profiles CW and filled with at least 50 mm thick mineral wool



The walls are built on the frameworks made of system profiles Norgips **CW 50 and UW 50, CW 75 and UW 75, CW 100 and UW 100** or **VP 66 and HP 66, VP 70 and HP 70, VP 95 and HP 95, VP 120 and HP 120** which were made of nominally 0.55 mm or 0.6 mm thick cold bent galvanized steel.

The **CW 50 and UW 50, CW 75 and UW 75, CW 100 and UW 100** or **VP 66 and HP 66, VP 70 and HP 70, VP 95 and HP 95, VP 120 and HP 120** perimeter profiles are fixed to the ceiling, floor and side walls by means of mechanical connectors such as, e.g.: wall plugs, dowels, connectors shot into the connected places, etc. The aforementioned mechanical connectors are placed every **80 cm**.

3 mm thick Norgips polyethylene sealing tape is placed between the perimeter steel profiles and the ceiling, floor and side walls. Double profiles **CW 50, CW 75, CW 100** or **VP 66, VP 70, VP 95, VP 120** are made from single profiles (respectively, CW 50, CW 75 or CW 100) which were connected with one another at their webs by being screwed using screws $\varnothing 3.5 \times 9.5$ mm with self-drilling endings placed at most every 40 cm. These double profiles, hereafter referred to as posts, are positioned

vertically and slid between the bottom and top shelves of, respectively, profiles **UW 50, UW 75, UW 100 or HP 66, HP 70, HP 95, HP 120 (see Figure 3)**. The axes of the adjacent posts are placed maximally every **60 cm** or every **62.5 cm**. The length of profiles **CW 50, CW 75 CW 100 or VP 66, VP 70, VP 95, VP 120** should be 1.5 cm less than the distance between the webs of the bottom and top profiles: **UW 50, UW 75, UW 100 or HP 66, HP 70, HP 95, HP 120 (see Figure 2b)**.

The boards are fixed in such a way that the vertical connections from two sides of the walls are not made on one and the same post. The vertical connections are shifted in relation to one another by at least **30 cm**; usually they are shifted by **60 cm** or **62.5 cm**.

If there are horizontal connections on the surface of the wall, between the adjacent boards, they have to be shifted in relation to one another by **at least 40 cm**. Gypsum plasterboards **Norgips GKF type DF (thickness: 1 x 12.5 mm)** or **GKFI type DFH2 (thickness: 1 x 12.5 mm)** or **Norgips Acoustic Super type DFH2IRE (thickness 1 x 12.5 mm)** are fixed to the bottom **UW** profiles and **CW** profiles (posts) by means of screws e.g. Norgips Ø 3.5 x 25 mm placed every **25 cm**.

Screw heads, the vertical and horizontal connections between the **GKF type DF** boards or the **GKFI type DFH2** boards or the **Norgips Acoustic Super type DFH2IRE** boards are covered with gypsum filler e.g. **Norgips Start, Norgips Super Filler** or **Norgips Start & Finish (Norgips Light Ready Mix)**. The Norgips system self-adhesive reinforcing tapes made of glass fibre or interfacing are applied at the connections between the boards. For final covering it is recommended to use ready mix jointing compound e.g. **Norgips Extra Finish, Norgips Start & Finish (Norgips Light Ready Mix), Norgips Finish MEGA (Norgips Easy Finish), Norgips Finish MEGA (Norgips Easy Finish)** or gypsum finish **Norgips Finish**.

The partition walls are filled with **at least 50 mm** thick boards made of mineral rock wool. The self-weight load (density) of the mineral wool is not less than **0.45 kN/m³**. Constructional details regarding the partition walls are presented in **Figures 2 and 3**.

The fire resistance classification of the walls is provided in **Tables 2 and 3 – see columns 9 and 11**, the maximum height of the walls is specified in **Tables 2 and 3 – see columns 10 and 12**.

Electric cables and wall boxes for electric installations can be installed in the wall. The wall boxes should be protected with a layer of gypsum filler e.g. **Norgips Start** or **Norgips Super Filler** (thickness: at least **15 mm**) or should be encased with gypsum plasterboards, and the minimum distance between the edges of the wall boxes should be **60 mm (see Figure 6)**.

In places where there is the constructional dilatation of the building and when the length of a straight (without dilatation) section of the wall is more than **15 m** one should apply dilatation (**see Figures 4 and 5**).

3. Fire resistance test of the non-loadbearing partition wall with the cladding made of gypsum plasterboards manufactured by Norgips Sp. z o.o.

A fire resistance test of the Norgips non-loadbearing partition wall, double sided cladded with gypsum plasterboards Norgips GKF type DF and filled with mineral rock wool, was carried out by the Fire Tests Laboratory of the Building Research Institute (Instytut Techniki Budowlanej).

Test report: LP-1121.4/08 [1.8].

4. Fire resistance classification of the non-loadbearing partition walls

Based on the analysis of the fire resistance test results indicated in item 3, the following products:

non-loadbearing partition walls with the cladding made of gypsum plasterboards manufactured by Norgips Sp. z o.o.

prepared in accordance with the technical description presented in item 2, are classified:

- in accordance with standard PN-EN 13501-2:2023-09 [1.3] as belonging to the fire resistance classes indicated in Tables 1 ÷ 3, column 9 by the maximum heights specified in Tables 1 ÷ 3, column 10.
- in accordance with the criteria presented in standard PN-EN 13501-2:2023-09 [1.3] as belonging to the fire resistance classes indicated in Tables 1 ÷ 3, column 11 by the maximum heights specified in Tables 1 ÷ 3, column 12.

5. Non-loadbearing partition walls with the cladding made of gypsum plasterboards manufactured by Norgips Sp. z o.o. used as separation from fire

Non-loadbearing partition walls prepared in accordance with the technical description presented in item 2 can be used as separation from fire meeting the **REI** fire resistance criteria if the following conditions are met:

- the walls are fixed to or placed on the construction meeting the criteria for a fire resistance class equal to or higher than the fire resistance class (E1) of the wall,
- the walls are not subjected to the mechanical load generated by the construction of the building,
- the walls are fixed to the elements of the building in accordance with the building project.

6. Validity

The classification presented in item 4 is valid until 24.09.2030 on the condition that there are no changes in the construction or materials of the classified products.

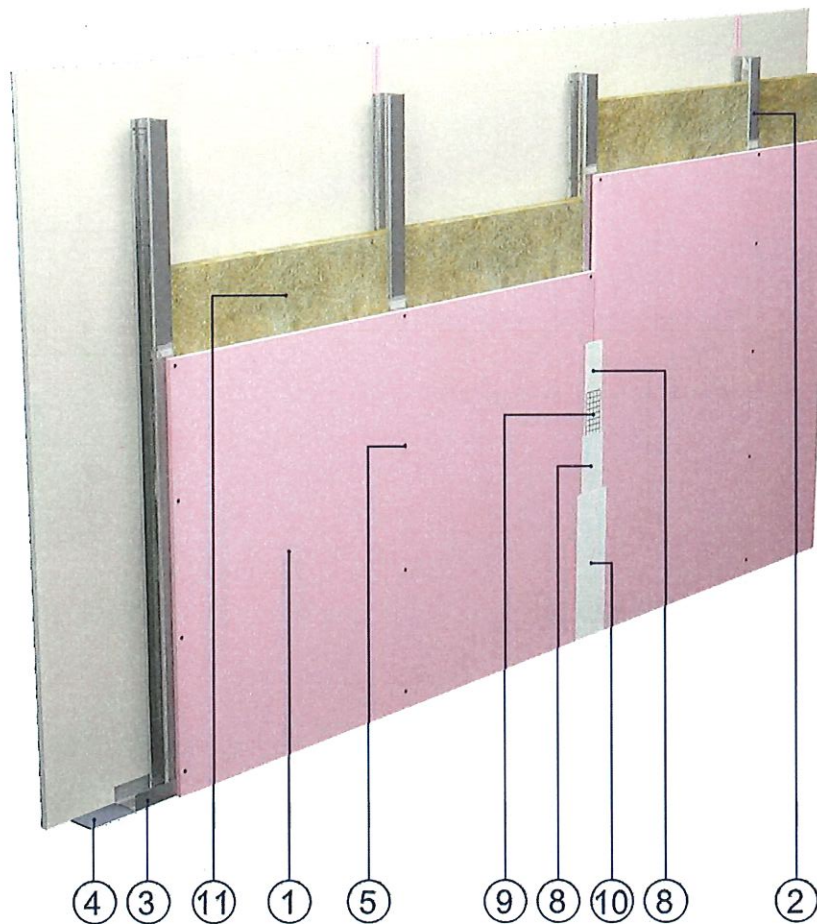
Annex 1 – Drawings presenting the Norgips non-loadbearing partition walls, with the cladding made of gypsum plasterboards Norgips GKF type DF, Norgips GKFI type DFH2 or Norgips Acoustic Super type DFH2IRE

Annex 2 – Tables 1 - 3 presenting the technical data of the Norgips non-loadbearing partition walls, with the cladding made of gypsum plasterboards Norgips GKF type DF, Norgips GKFI type DFH2 or Norgips Acoustic Super type DFH2IRE

Classification No. LBO – 059 – KZ/25E

Annex 1

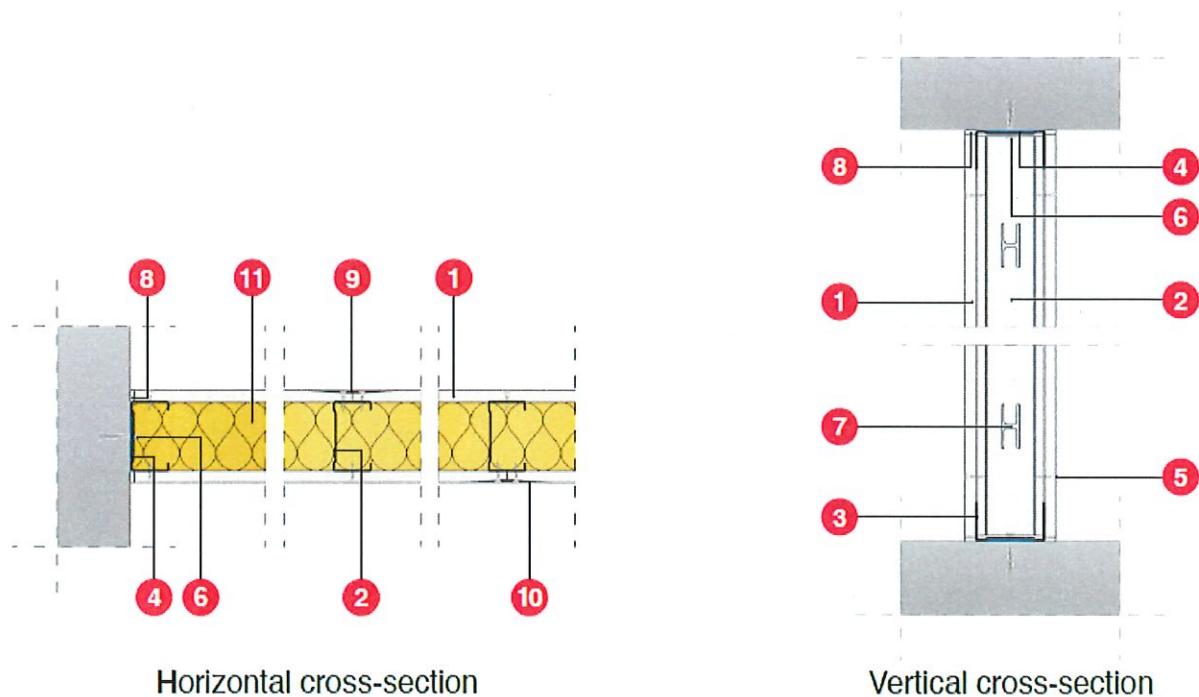
Drawings presenting the Norgips non-loadbearing partition walls, with the cladding made of gypsum plasterboards Norgips GKF type DF, Norgips GKFI type DFH2 or Norgips Acoustic Super type DFH2IRE



Elements of the partition wall

1. Gypsum plasterboards Norgips GKF type DF, Norgips GKFI type DFH2, Norgips Acoustic Super type DFH2IRE, thickness: 1 x 12.5 mm
2. Profiles e.g. Norgips CW 50, CW 75, CW 100 or VP 66, VP 70, VP 95, VP 120 made of at least 0.55 mm thick sheet, placed maximally every 60 cm or 62.5 cm
3. Profiles e.g. Norgips UW 50, UW 75, UW 100 or HP 66. HP 70, HP 95, HP 120 made of at least 0.55 mm thick sheet
4. Sealing tape e.g. Norgips
5. Screws e.g. Norgips $\Phi 3.5$ mm x 25 mm placed every 25 cm
8. Gypsum filler e.g. Norgips Start, Norgips Super Filler or Norgips Start & Finish (Norgips Light Ready Mix)
9. Reinforcing tape
10. Gypsum finish e.g. Norgips Finish, ready mix jointing compound e.g. Norgips Extra Finish, Norgips Start & Finish (Norgips Light Ready Mix), Norgips Finish MEGA (Norgips Easy Finish) or Norgips Finish
11. Mineral rock wool, thickness: at least 50 mm, self-weight load: at least 0.45 kN/m³

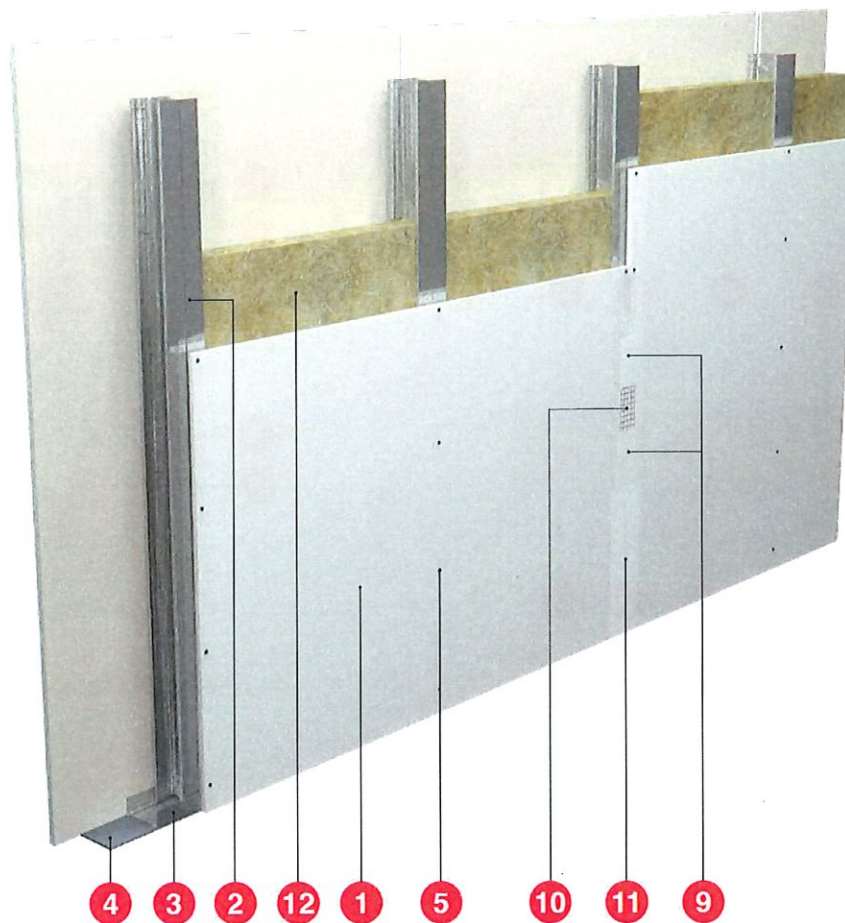
Figure 1 Constructional details of the partition wall



Elements of the partition wall

1. Gypsum plasterboards Norgips GKF type DF, Norgips GKFI type DFH2, Norgips Acoustic Super type DFH2IRE, thickness: 1 x 12.5 mm
2. Profiles e.g. Norgips CW 50, CW 75, CW 100 or VP 66, VP 70, VP 95, VP 120 made of at least 0.55 mm thick sheet, placed maximally every 60 cm or 62.5 cm
3. Profiles e.g. Norgips UW 50, UW 75, UW 100 or HP 66, HP 70, HP 95, HP 120 made of at least 0.55 mm thick sheet
4. Sealing tape e.g. Norgips
5. Screws e.g. Norgips $\Phi 3.5$ mm x 25 mm placed every 25 cm
6. Wall plugs, at least $\Phi 6$ mm x 40 mm
7. Holes in studs for routing installation cables
8. Gypsum filler e.g. Norgips Start, Norgips Super Filler or Norgips Start & Finish (Norgips Light Ready Mix), Norgips Finish MEGA (Norgips Easy Finish)
9. Reinforcing tape
10. Gypsum finish e.g. Norgips Finish, ready mix jointing compound e.g. Norgips Extra Finish, Norgips Start & Finish (Norgips Light Ready Mix), Norgips Finish MEGA (Norgips Easy Finish) or Norgips Finish
11. Mineral rock wool, thickness: at least 50 mm, self-weight load: at least 0.45 kN/m^3

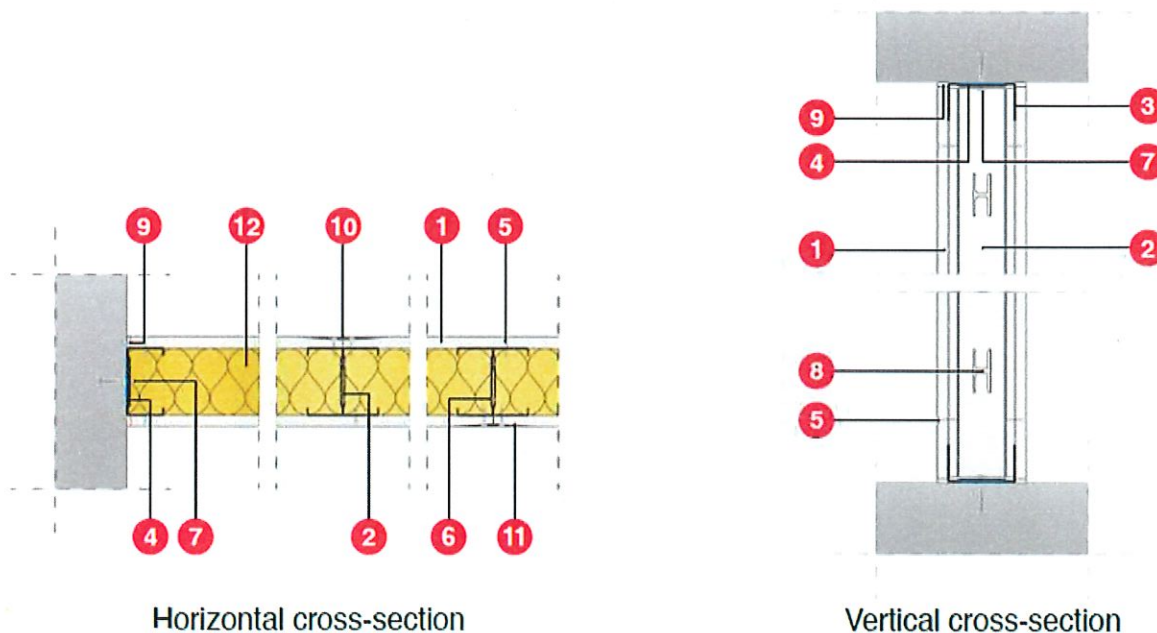
Figure 2 Constructional details of the partition wall (sections)



Elements of the partition wall

1. Gypsum plasterboards Norgips GKF type DF, Norgips GKFI type DFH2, Norgips Acoustic Super type DFH2IRE, thickness: 1 x 12.5 mm
2. Double profiles e.g. Norgips CW 50, CW 75, CW 100 or VP 66, VP 70, VP 95, VP 120 made of at least 0.55 mm thick with webs screwed by means of steel self-tapping screw ϕ 3,5 x 9,5 mm in maximum 50 cm spacing in maximal spacing of 60 cm or 62,5 cm
3. Profiles e.g. Norgips UW 50, UW 75, UW 100 or HP 66. HP 70, HP 95, HP 120 made of at least 0.55 mm thick sheet
4. Sealing tape e.g. Norgips
5. Screws e.g. Norgips Φ 3.5 mm x 25 mm placed every 25 cm
9. Joint made of gypsum filler e.g. Norgips Start, Norgips Super Filler or Norgips Start & Finish (Norgips Light Ready Mix)
10. Reinforcing tape
11. Gypsum filler e.g. Norgips Start, Norgips Super Filler or Norgips Start & Finish (Norgips Light Ready Mix), Norgips Finish MEGA (Norgips Easy Finish)
12. Mineral rock wool, thickness: at least 50 mm, self-weight load: at least 0.45 kN/m³

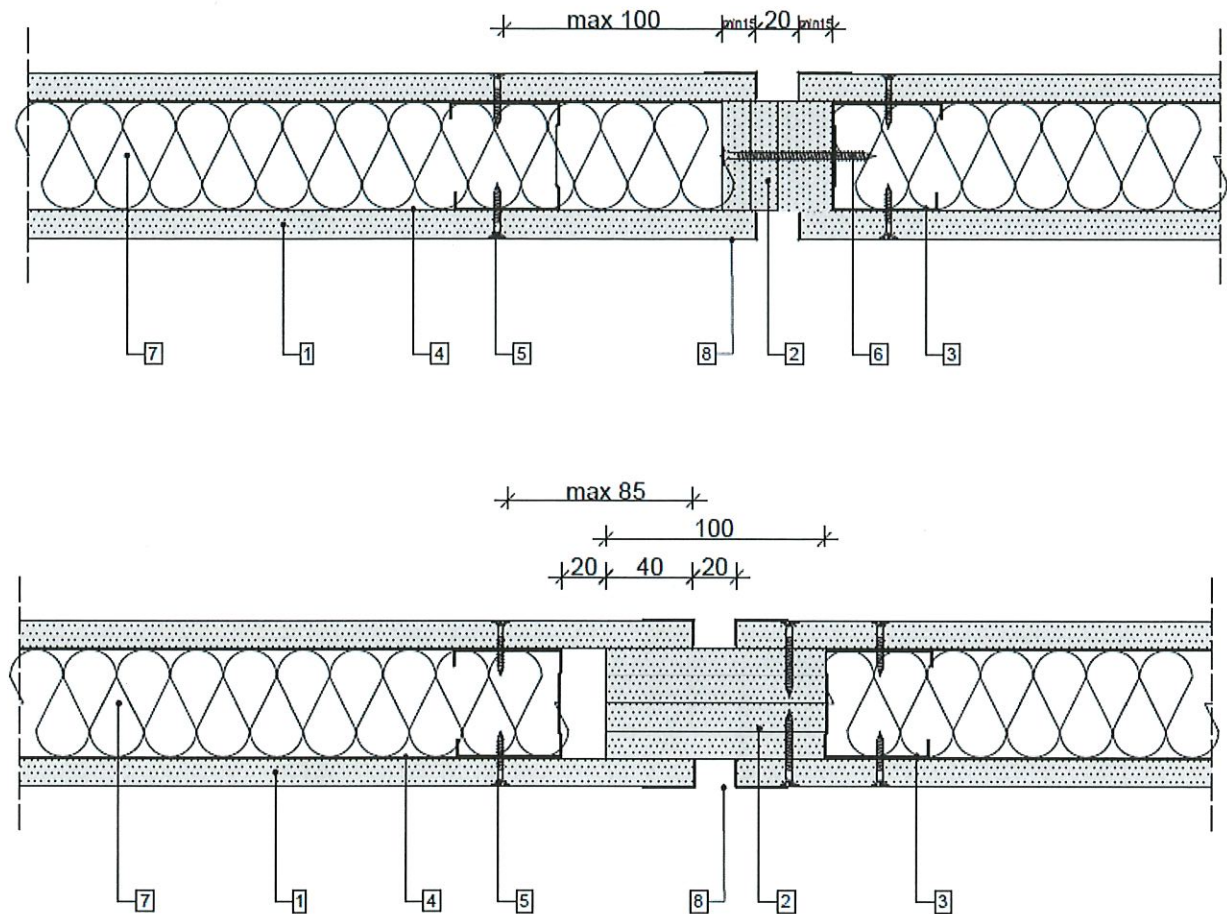
Figure 3 **Constructional details of the partition wall**



Elements of the partition wall

1. Gypsum plasterboards Norgips GKF type DF, Norgips GKFI type DFH2, Norgips Acoustic Super type DFH2IRE, thickness: 1 x 12.5 mm
2. Double profiles e.g. Norgips CW 50, CW 75, CW 100 or VP 66, VP 70, VP 95, VP 120 made of at least 0.55 mm thick sheet, placed maximally every 60 cm or 62.5 cm
3. Profiles e.g. Norgips UW 50, UW 75, UW 100 or HP 66, HP 70, HP 95, HP 120 made of at least 0.55 mm thick sheet
4. Sealing tape e.g. Norgips
5. Screws e.g. Norgips $\Phi 3.5$ mm x 25 mm placed every 25 cm
6. Self-tapping screw $\phi 3,5$ x 9,5 mm in maximum 50 cm spacing
7. Wall plugs, at least $\Phi 6$ mm x 40 mm
8. Holes in studs for routing installation cables
9. Gypsum filler e.g. Norgips Start, Norgips Super Filler or Norgips Start & Finish (Norgips Light Ready Mix), Norgips Finish MEGA (Norgips Easy Finish)
10. Reinforcing tape
11. Gypsum finish e.g. Norgips Finish, ready mix jointing compound e.g. Norgips Extra Finish, Norgips Start & Finish (Norgips Light Ready Mix), Norgips Finish MEGA (Norgips Easy Finish) or Norgips Finish
12. Mineral rock wool, thickness: at least 50 mm, self-weight load: at least 0.45 kN/m³

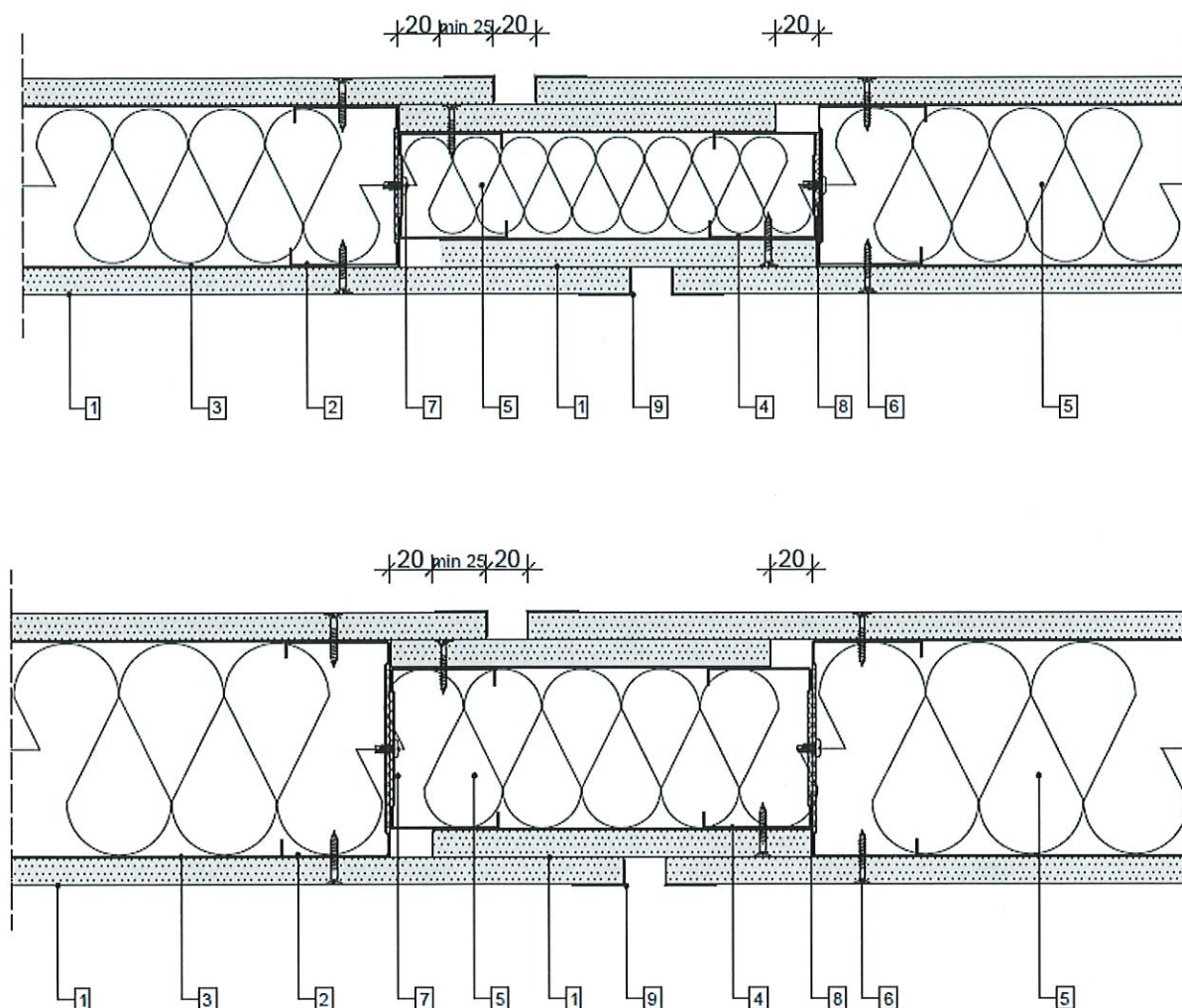
Figure 4 Constructional details of the partition wall (sections)



Elements of the partition wall

1. Gypsum plasterboards Norgips GKF type DF, Norgips GKFI type DFH2, Norgips Acoustic Super type DFH2IRE, thickness: 1 x 12.5 mm
2. Strips of gypsum plasterboards Norgips GKF type DF, Norgips GKFI type DFH2, Norgips Acoustic Super type DFH2IRE, thickness: 4 x 12.5 mm
3. Profiles e.g. Norgips CW 50 or VP 66 or VP 70
4. Profiles e.g. Norgips UW 50 or HP 66 or HP 70
5. Screws e.g. Norgips $\Phi 3.5$ mm x 25 mm placed every 25 cm
6. Screws e.g. Norgips $\Phi 4.2$ mm x 70 mm placed every 40 cm
7. Mineral rock wool, thickness: at least 50 mm, self-weight load: at least 0.45 kN/m^3
8. Aluminium semi-corner (recommended)

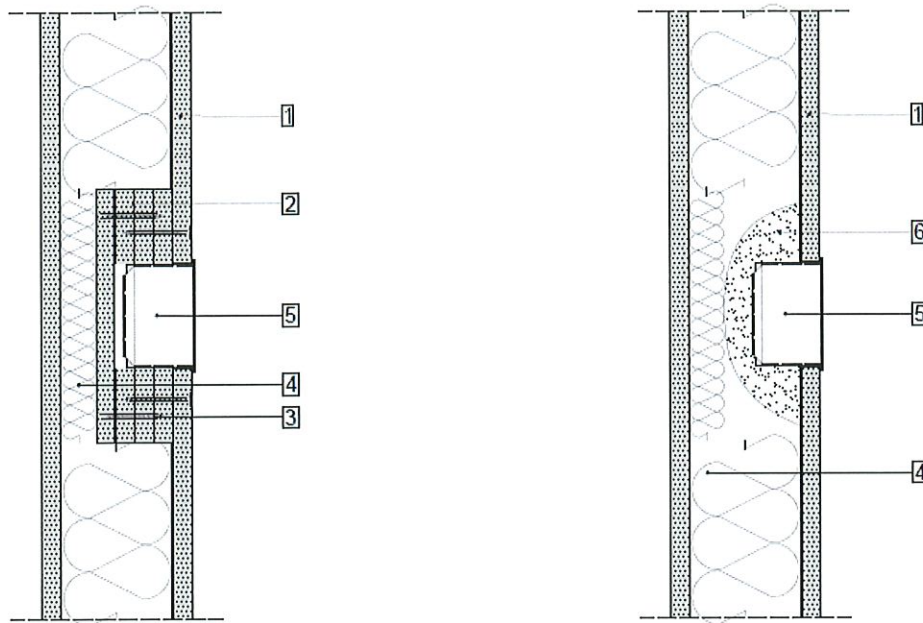
Figure 5 **Constructional details of the partition wall**



Elements of the partition wall

1. Gypsum plasterboards Norgips GKF type DF, Norgips GKFI type DFH2, Norgips Acoustic Super type DFH2IRE, thickness 1 x 12.5 mm
2. Profiles e.g. Norgips CW 75 or CW 100 or VP 95 or VP 120
3. Profiles e.g. Norgips UW 75 or UW 100 or HP 95 or HP 120
4. Profiles e.g. Norgips CW 50 or CW 75 or VP 70 or VP 95
5. Mineral rock wool, thickness: at least 50 mm, self-weight load: at least 0.45 kN/m³
6. Screws e.g. Norgips Φ 3.5 mm x 25 mm placed every 25 cm
7. Screws with self-drilling endings ϕ 3.5 x 9.5 mm placed at most every 40 cm
8. Sealing tape e.g. Norgips
9. Aluminium semi-corner (recommended)

Figure 6 Constructional details of the partition wall



Protection by means of
the encasing made of
gypsum plasterboard

Protection by means of
gypsum filler

Elements of the protection of wall boxes for electric installations

1. Gypsum plasterboards Norgips GKF type DF, Norgips GKFI type DFH2, Norgips Acoustic Super type DFH2IRE, thickness: 1 x 12.5 mm
2. Gypsum plasterboards Norgips GKF type DF, Norgips GKFI type DFH2, Norgips Acoustic Super type DFH2IRE, thickness: 4 x 12.5 mm
3. Screws e.g. Norgips 3.5 mm x 45 mm
4. Mineral rock wool, self-weight load: at least 0.45 kN/m³
5. Wall box for electric installations
6. Gypsum filler e.g. Norgips Start or Super Filler, thickness: at least 15 mm

Figure 7 **Constructional details of the partition wall**

GRYFITLAB Sp. z o.o.
Zespół Laboratoriów
Badawczych Gryfitlab
ul. Prosta 2, Łozienica
72-100 GOLENIÓW

Classification No. LBO – 059 – KZ/25E

Annex 2

Tables 1 - 3

Table 2

Technical details for the following types of the Norgips partition walls:

SD-1 x 12.5 DFH2IRE/CW 50 W 50, SD-1 x 12.5 DFH2IRE/CW 75 W 50, SD-1x12.5 GKF DFH2IRE/CW 100 W 50, SD-1 x 12.5 DFH2IRE/CW 50+CW 50 W 50, SD-1 x 12.5 DFH2IRE/CW 75+CW 75 W 50, SD-1x12.5 GKF DFH2IRE/CW 100+CW 100 W 50, SD-1 x 12.5 DFH2IRE/VP 66 W 50, SD-1 x 12.5 DFH2IRE/VP 70 W 50, SD-1x12.5 GKF DFH2IRE/VP 95 W 50, SD-1x12.5 GKF DFH2IRE/VP 120 W 50, SD-1 x 12.5 DFH2IRE/VP 66+VP 66 W 50, SD-1 x 12.5 DFH2IRE/VP 70+VP 70 W 50, SD-1x12.5 GKF DFH2IRE/VP 95+VP 95 W 50, SD-1x12.5 GKF DFH2IRE/VP 120+VP 120 W 50

Symbol of the Norgips wall	Type of profiles	Maximum distance between the CW profiles [cm]	Type of the cladding made of gypsum plasterboards			Total thickness of the wall [mm]	Filling with mineral wool	Fire resistance classification of the wall			
			Type/thickness [mm]	Minimum weight of the board [kg/m ²]	Maximum height [cm]			According to standard PN-EN 13501-2:2023-09		According to the criteria of standard PN-EN 13501-2:2023-09	
								Fire resistance class	Maximum height [cm]	Fire resistance class	Maximum height [cm]
1	2		3	4	5	6	9	10	11	12	
SD-1x12.5 DFH2IRE/CW 50 W 50	CW 50	60/62.5			75		EI 60	330		330	
SD-1x12.5 DFH2IRE/VP 66 W 50	VP 66	40/41.7		10.0	91			400	EI 60	410	
SD-1x12.5 DFH2IRE/VP 70 W 50	VP 70	30/31.3			95			400		480	
SD-1x12.5 DFH2IRE/CW 75 W 50	CW 75	60/62.5			100		EI 60	400		440	
SD-1x12.5 DFH2IRE/VP 95 W 50	VP 95	40/41.7		10.0	120			400	EI 60	500	
		30/31.3						400		560	
SD-1x12.5 DFH2IRE/CW 100 W 50	CW 100	60/62.5			125	Mineral rock wool, thickness: at least 50 mm, self-weight load: at least 0.45 kN/m ³	EI 60	400		580	
SD-1x12.5 DFH2IRE/VP 120 W 50	VP 120	40/41.7		10.0	145			400	EI 60	620	
		30/31.3						400		650	
SD-1x12.5 DFH2IRE/CW 50+CW 50 W 50	CW 50	60/62.5			75		EI 60	400		430	
SD-1x12.5 DFH2IRE/VP 66+VP 66 W 50	VP 66	40/41.7		10.0	91			400	EI 60	520	
SD-1x12.5 DFH2IRE/VP 70+VP 70 W 50	VP 70	30/31.3			95			400		600	
SD-1x12.5 DFH2IRE/CW 75+CW 75 W 50	CW 75	60/62.5			100		EI 60	400		570	
SD-1x12.5 DFH2IRE/VP 95+VP 95 W 50	VP 95	40/41.7		10.0	120			400	EI 60	630	
		30/31.3						400		650	
SD-1x12.5 DFH2IRE/CW 100+CW 100 W 50	CW 100	60/62.5			125		EI 60	400		650	
SD-1x12.5 DFH2IRE/VP 120+VP 120 W 50	VP 120	40/41.7		10.0	145			400	EI 60	650	
		30/31.3						400		650	

Note: For acoustic reasons, it is possible to use gypsum plasterboards of greater thickness or additional layers of boards.

Table 3

Technical details for the following types of the Norgips partition walls:

SD-1 x 12.5 GKF DF/CW 50+CW 50 W 50, SD-1 x 12.5 GKF DF/CW 75+CW 75 W 50, SD-1x12.5 GKF DF/CW 100+CW 100 W 50, SD-1 x 12.5 GKF DFH2/CW 100+CW 100 W 50, SD-1x12.5 GKF DF/VP 66 + VP 66 W 50, SD-1x12.5 GKF DF/VP 70 + VP 70 W 50, SD-1 x 12.5 GKF DFH2/CW 75+CW 75 W 50, SD-1x12.5 GKF DF/VP 95 + VP 95 W 50, SD-1x12.5 GKF DF/VP 120 + VP 120 W 50, SD-1x12.5 GKF DF/VP 66 + VP 66 W 50, D-1x12.5 GKF DFH2/VP 70 + VP 70 W 50, SD-1x12.5 GKF DFH2/VP 95 + VP 95 W 50, SD-1x12.5 GKF DFH2/VP 120 + VP 120 W 50

Symbol of the Norgips wall	Type of profiles	Maximum distance between the CW profiles [cm]	Type of the cladding made of gypsum plasterboards		Total thickness of the wall [mm]	Filling with mineral wool	Fire resistance classification of the wall			
			Type/thickness [mm]	Minimum weight of the board [kg/m ²]			According to standard PN-EN 13501-2:2023-09		According to the criteria of standard PN-EN 13501-2:2023-09	
							Fire resistance class	Maximum height [cm]	Fire resistance class	Maximum height [cm]
1	2	3	4	5	6	9	10	11	12	
SD-1x12.5 GKF DF/CW 50+CW 50 W 50	2xCW 50	60/62.5		75	Mineral rock wool, thickness: at least 50 mm, self-weight load: at least 0.45 kN/m ³	EI 60	400	EI 60	430	
SD-1x12.5 GKF DF/VP 66+VP 66 W 50	2xVP 66	40/41.7	10.0	91		EI 60	400	EI 60	520	
SD-1x12.5 GKF DF/VP 70+VP 70 W 50	2xVP 70	30/31.3		95		EI 60	400	EI 60	600	
SD-1x12.5 GKF DF/CW 75+CW 75 W 50	2xCW 75	60/62.5	10.0	100	Mineral rock wool, thickness: at least 50 mm, self-weight load: at least 0.45 kN/m ³	EI 60	400	EI 60	570	
SD-1x12.5 GKF DF/VP 95+VP 95 W 50	2xVP 95	40/41.7		120		EI 60	400	EI 60	630	
		30/31.3		145		EI 60	400	EI 60	650	
SD-1x12.5 GKF DF/CW 100+CW 100 W 50	2xCW 100	60/62.5	10.0	125	Mineral rock wool, thickness: at least 50 mm, self-weight load: at least 0.45 kN/m ³	EI 60	400	EI 60	650	
SD-1x12.5 GKF DF/VP 120+VP 120 W 50	2xVP 120	40/41.7		145		EI 60	400	EI 60	650	
		30/31.3		145		EI 60	400	EI 60	650	
SD-1x12.5 GKF DFH2/CW 50+CW 50 W 50	2xCW 50	60/62.5		75	Mineral rock wool, thickness: at least 50 mm, self-weight load: at least 0.45 kN/m ³	EI 60	400	EI 60	430	
SD-1x12.5 GKF DFH2/VP 66+VP 66 W 50	2xVP 66	40/41.7	10.0	91		EI 60	400	EI 60	520	
SD-1x12.5 GKF DFH2/VP 70+VP 70 W 50	2xVP 70	30/31.3		95		EI 60	400	EI 60	600	
SD-1x12.5 GKF DFH2/CW 75+CW 75 W 50	2xCW 75	60/62.5	10.0	100	Mineral rock wool, thickness: at least 50 mm, self-weight load: at least 0.45 kN/m ³	EI 60	400	EI 60	570	
SD-1x12.5 GKF DFH2/VP 95+VP 95 W 50	2xVP 95	40/41.7		120		EI 60	400	EI 60	630	
		30/31.3		145		EI 60	400	EI 60	650	
SD-1x12.5 GKF DFH2/CW 100+CW 100 W 50	2xCW 100	60/62.5	10.0	125	Mineral rock wool, thickness: at least 50 mm, self-weight load: at least 0.45 kN/m ³	EI 60	400	EI 60	650	
SD-1x12.5 GKF DFH2/VP 120+VP 120 W 50	2xVP 120	40/41.7		145		EI 60	400	EI 60	650	
		30/31.3		145		EI 60	400	EI 60	650	

Note: For acoustic reasons, it is possible to use gypsum plasterboards of greater thickness or additional layers of boards.

