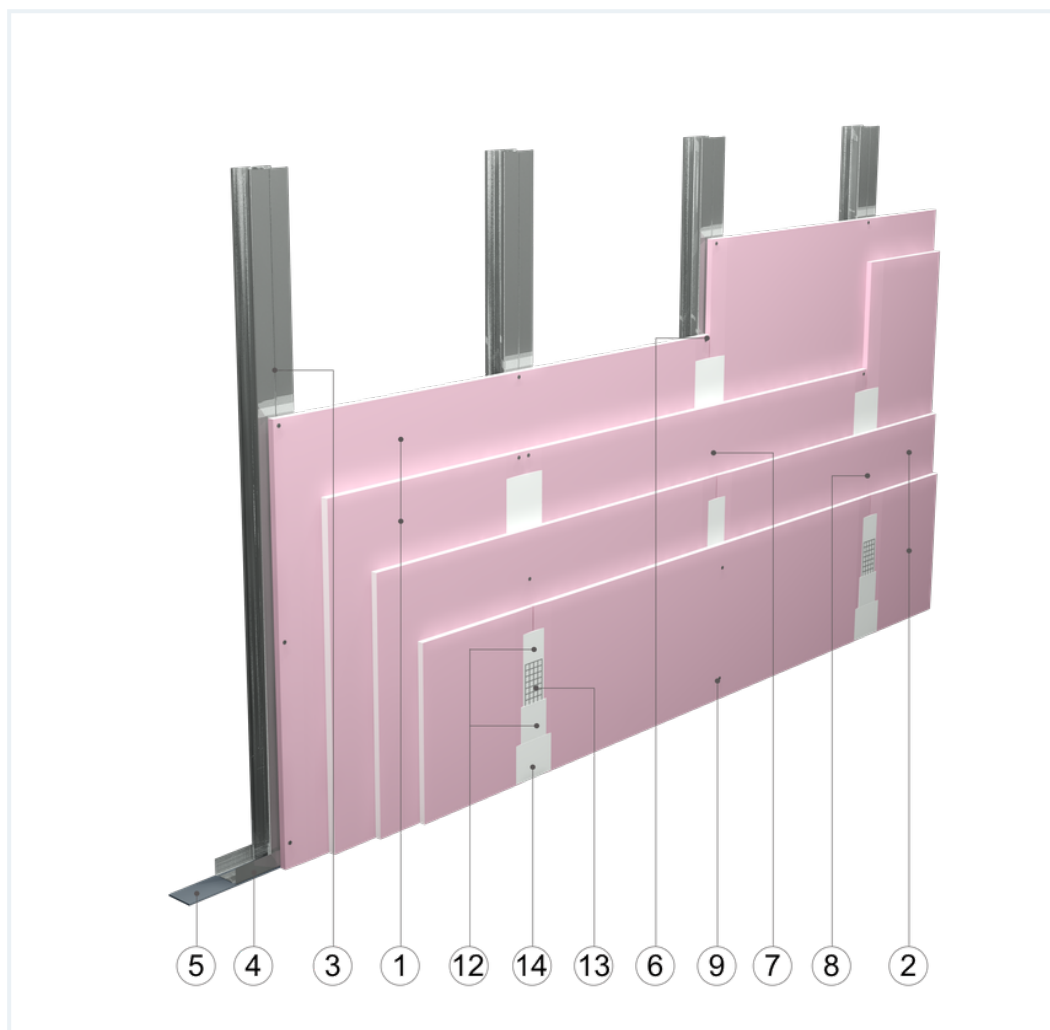


SYSTEM DATASHEET

Covering wall SO - 2x15+2x12,5 GKF DF/CW 50+CW 50 (W)





on a CW 50 and UW 50 profile structure with four-fold DF-type GKF boards with a thickness of 2 x 15 + 2 x 12.5 mm, with optional mineral wool filling



Covering wall elements

1. Norgips S GKF type DF gypsum plasterboard , thickness: 15 mm
2. Norgips S GKF type DF gypsum plasterboard , thickness: 12.5 mm
3. Norgips CW 50 profiles, max. axial spacing every 60 cm
4. Norgips UW 50 profiles mounted on horizontal load-bearing elements
5. Norgips sealing tape, width 50 mm
6. Norgips 3.5 x 25 mm sheet metal screws, max. spacing every 75 cm
7. Norgips 3.5 x 45 mm sheet metal screws, max. spacing every 75 cm
8. Norgips 3.5 x 55 mm sheet metal screws, max. spacing every 75 cm
9. Norgips 4.2 x 70 mm sheet metal screws, max. spacing every 25 cm
10. Norgips 3.5 x 9.5 mm sheet metal screws, max. spacing every 50 cm
11. Fastening pins, min. \varnothing 6 x 40 mm, max. spacing every 80 cm
12. Norgips Start & Finish ready-made joint compound or Norgips Start gypsum joint compound
13. Norgips reinforcing tape
14. Ready-made joint compound Norgips Extra Finish, ready-made joint compound Norgips Start & Finish, gypsum joint compound Norgips Finish
15. Optional mineral wool

Technical data

 Fire resistance class EI 90 ^{1) 2)}	 Max height 3.6 m ¹⁾
 Wall mass 52 kg/m ² ³⁾	 Acoustic insulation ΔR_w =up to 12 dB ⁴⁾

The above-mentioned parameters apply to a partition made of sheet metal profiles with a thickness of 0.55 and 0.6 mm.

- 1) The stated heights apply to constructions with a profile spacing of 600 mm. When a structure with profiles spaced every 300 or 400 mm is used, the permissible wall height increases. Contact system provider representatives for details. The stated heights apply to rooms where only a few persons are present simultaneously (e.g. rooms in flats, hotels, hospitals). In rooms where a large number of persons are present simultaneously (e.g. conference rooms, classrooms, lecture halls), the permissible height is 2.6 m.
- 2) Based on classification no. LBO-776-K/21
- 3) The weight specified does not include the insulation material weight.
- 4) Estimated increase in acoustic insulation effectiveness on the basis of the DIN 4109 standard

Standard

☆☆☆ SUPER

It provides a very stable building with the highest fire resistance, sound insulation and hardness.



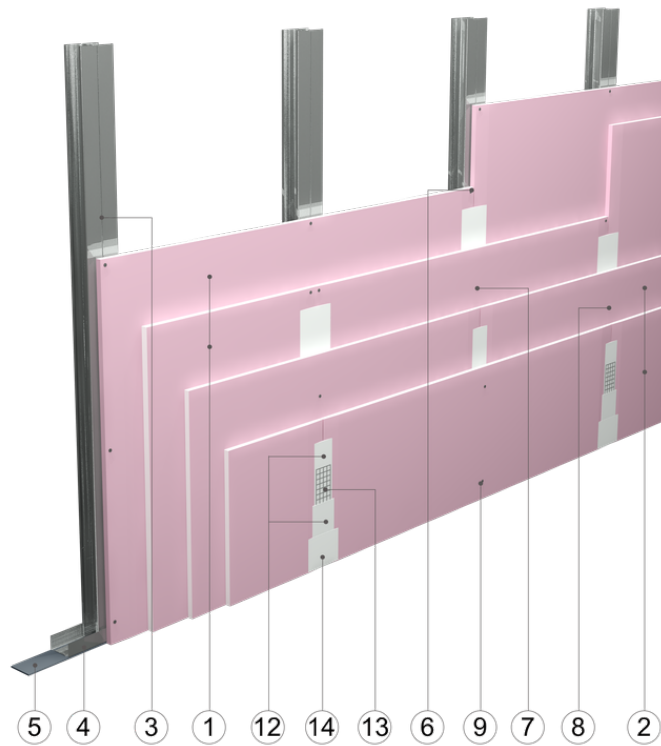


Fig. 1. Curtain wall view

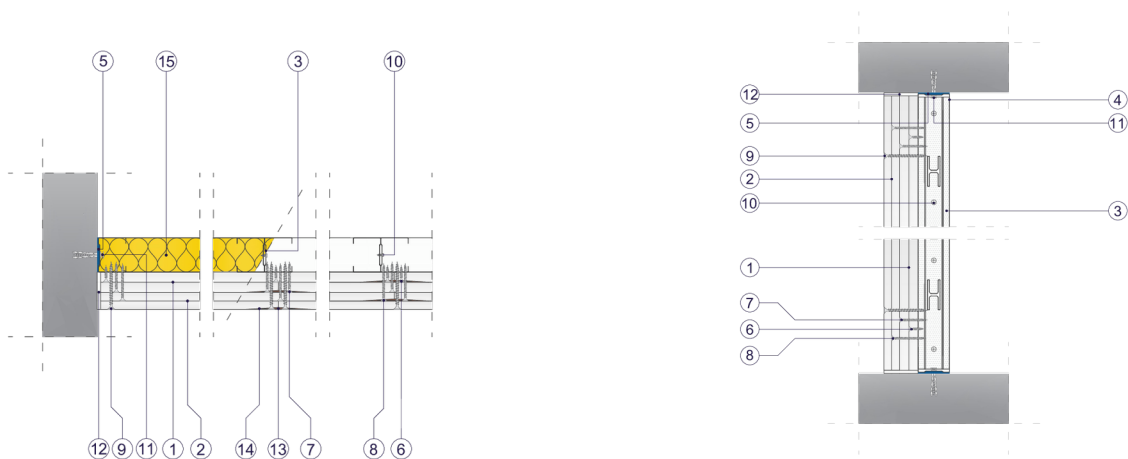


Fig. 2. Curtain wall horizontal section