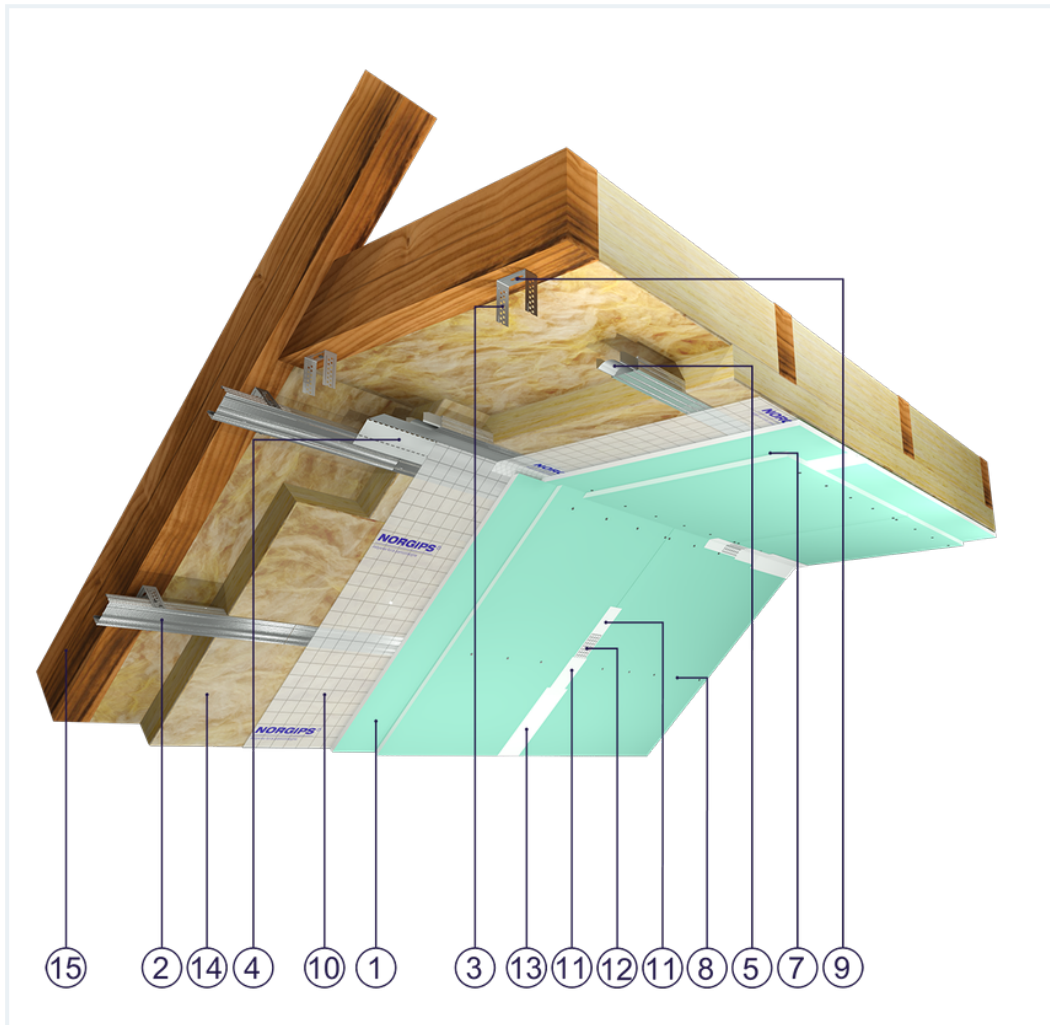


SYSTEM DATASHEET

Attic lining ZP - 2x12,5 GKBI H2/CD 60 0,50, ES, W

on a structure of CD 60 profiles made of sheet metal with a thickness of 0.5 mm and ES/ES Plus hangers with double sheathing of GKBI type H2 boards , thickness: 12.5 mm



Attic lining elements

1. Norgips S GKBI type H2 gypsum plasterboard , thickness: 12.5 mm
2. Norgips CD 60 profiles, max. axial spacing every 40 cm**
3. Norgips ES/ES Plus hangers
4. Norgips FLEX universal profile
5. Norgips longitudinal connectors mounted with 4 3.5x9.5 mm sheet metal screws with a self-tapping tip
6. Norgips 3.5 x 25 mm sheet metal screws, max. spacing every 40 cm
7. Norgips 3.5 x 35 mm sheet metal screws, max. spacing every 17 cm
8. Norgips 3.5 x 9.5 mm sheet metal screws with a self-tapping tip
9. Norgips 3.5 x 35 mm wood screws
10. Vapour barrier membrane
11. Norgips Start & Finish ready-made joint compound or Norgips Start gypsum joint compound
12. Norgips reinforcing tape
13. Ready-made joint compound Norgips Extra Finish, ready-made joint compound Norgips Start & Finish, gypsum joint compound Norgips Finish
14. Mineral wool
15. Roof rafters

Technical data

	Lining weight 17 kg/m ² ¹⁾
--	---

The above-mentioned parameters apply to a partition made of sheet metal profiles with a thickness of 0.5 mm.

1) The weight specified does not include the insulation material weight.

Standard

 **SMART**

Provides a lightweight stable body with proven performance. The solution guarantees quality at an attractive price.



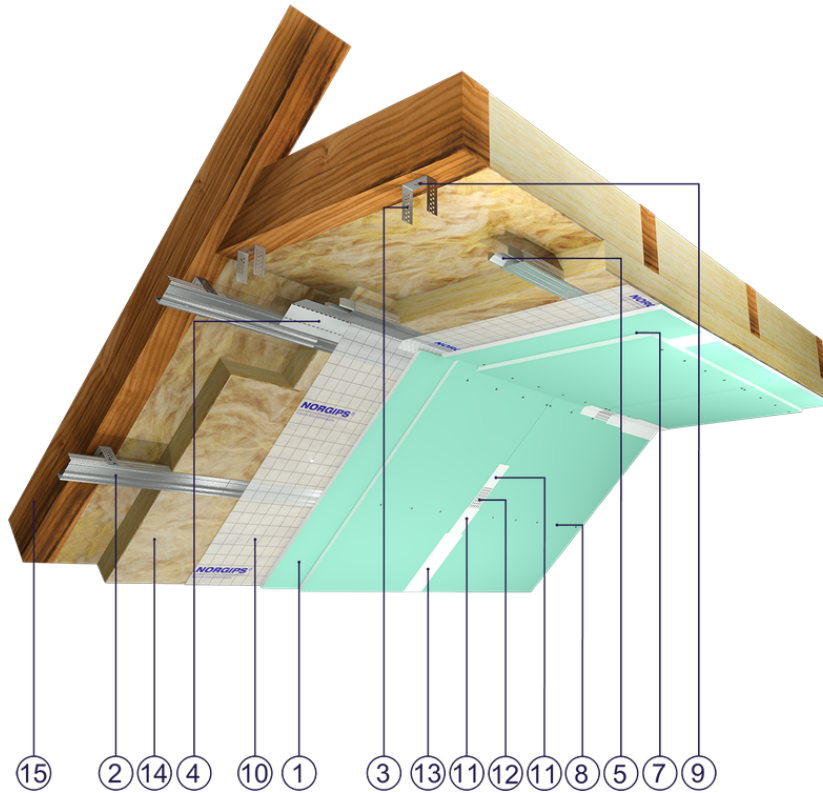


Fig. 1. Attic view

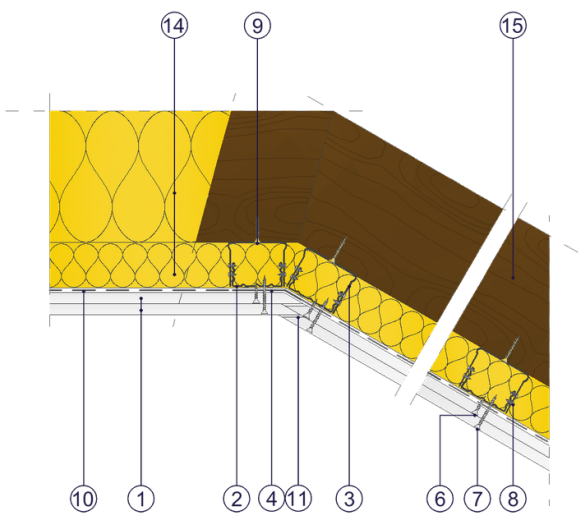


Fig. 2. Attic horizontal section

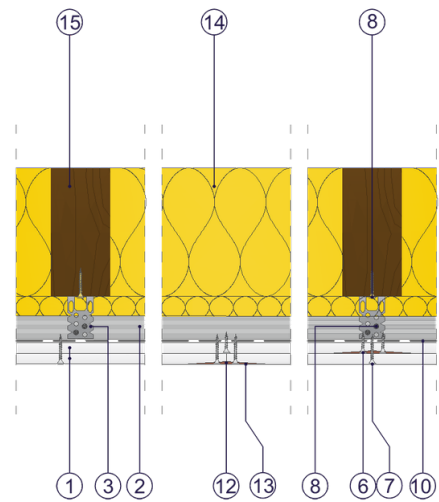


Fig. 3. Attic vertical section