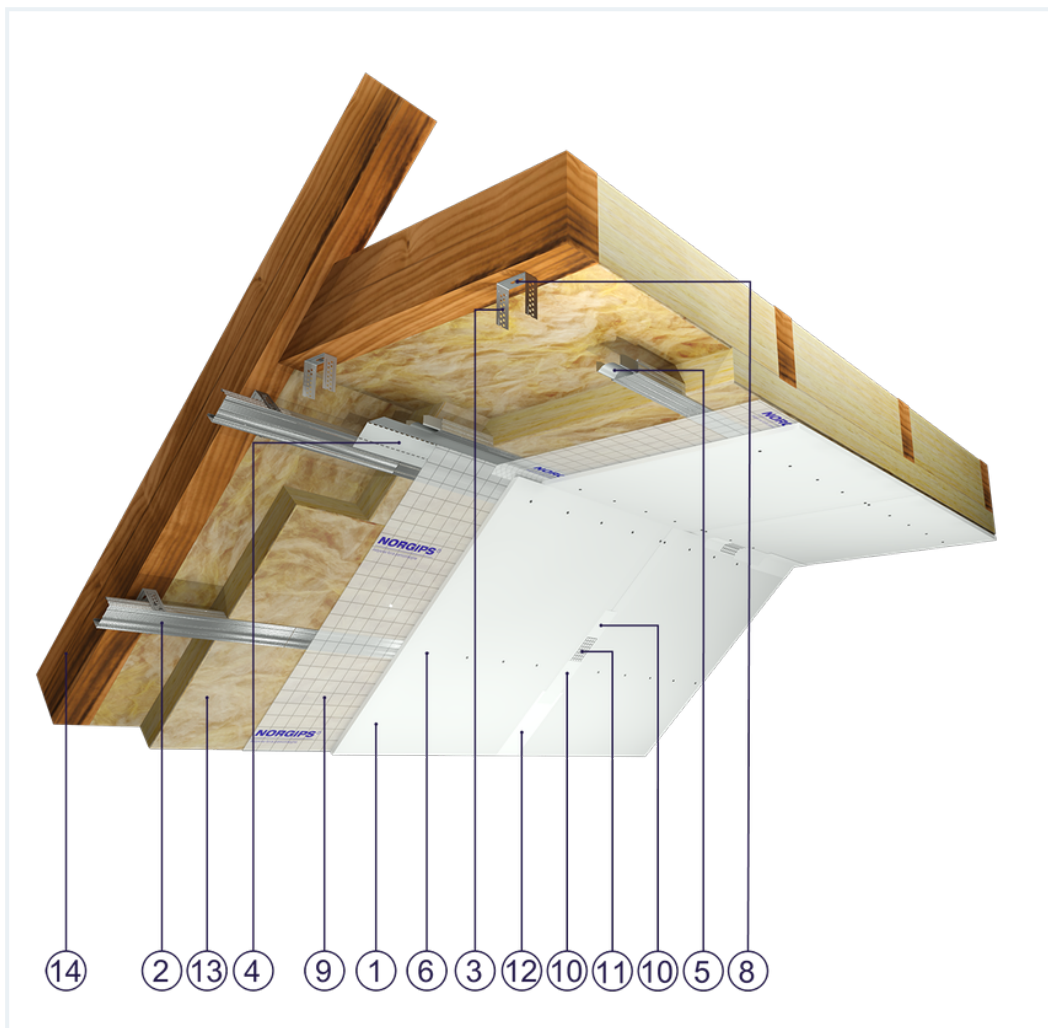


## SYSTEM DATASHEET

### Attic lining ZP - 1x12,5 GKB A/CD 60 0,50, ES, W

on a structure of CD 60 profiles made of sheet metal with a thickness of 0.5 mm and ES/ES Plus hangers with a single sheathing of Type A GKB boards , thickness: 12.5 mm



## Attic lining elements

1. Norgips S GKB type A plasterboards of 12.5 mm thickness 12.5 mm
2. Norgips CD 60 profiles, max. axial spacing every 40 cm\*\*
3. Norgips ES/ES Plus hangers
4. Norgips FLEX universal profile
5. Norgips longitudinal connectors mounted with 4 3.5x9.5 mm sheet metal screws with a self-tapping tip
6. Norgips 3.5 x 25 mm sheet metal screws, max. spacing every 17 cm
7. Norgips 3.5 x 9.5 mm sheet metal screws with a self-tapping tip
8. Norgips 3.5 x 35 mm wood screws
9. Vapour barrier membrane
10. Norgips Start & Finish ready-made joint compound or Norgips Start gypsum joint compound
11. Norgips reinforcing tape
12. Ready-made joint compound Norgips Extra Finish, ready-made joint compound Norgips Start & Finish, gypsum joint compound Norgips Finish
13. Mineral wool
14. Roof rafters

## Technical data

	Lining weight 9 kg/m <sup>2</sup> <sup>1)</sup>
---	--

The above-mentioned parameters apply to a partition made of sheet metal profiles with a thickness of 0.5 mm.

**1)** The weight specified does not include the insulation material weight.

## Standard

 **SMART**

Provides a lightweight stable body with proven performance. The solution guarantees quality at an attractive price.



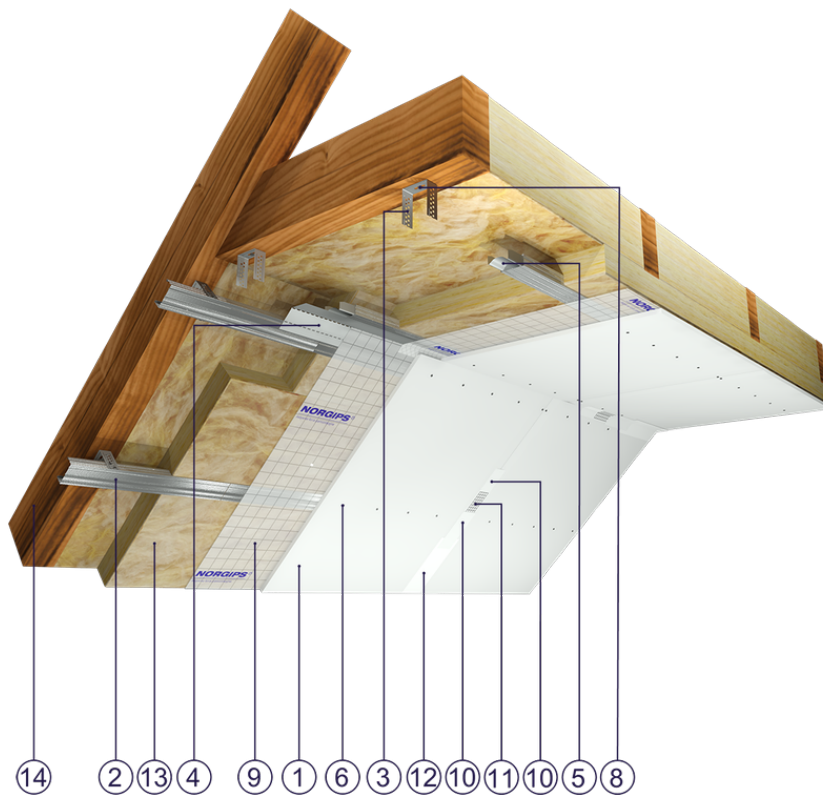


Fig. 1. Attic view

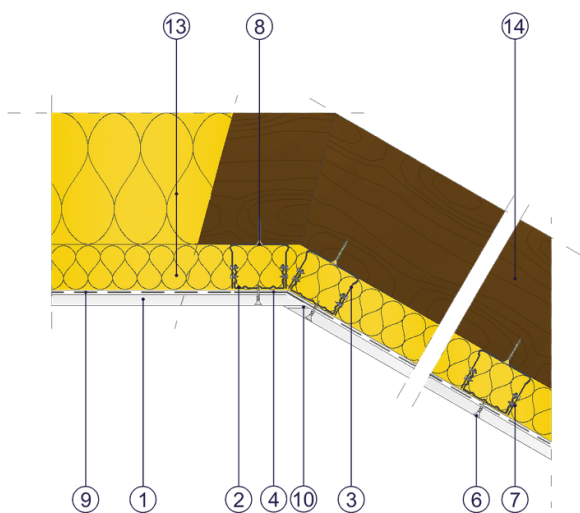


Fig. 2. Attic horizontal section

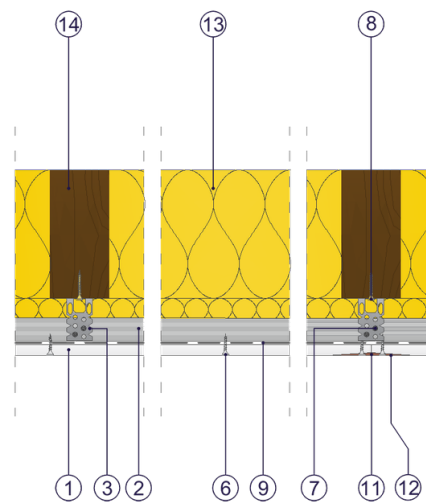


Fig. 3. Attic vertical section