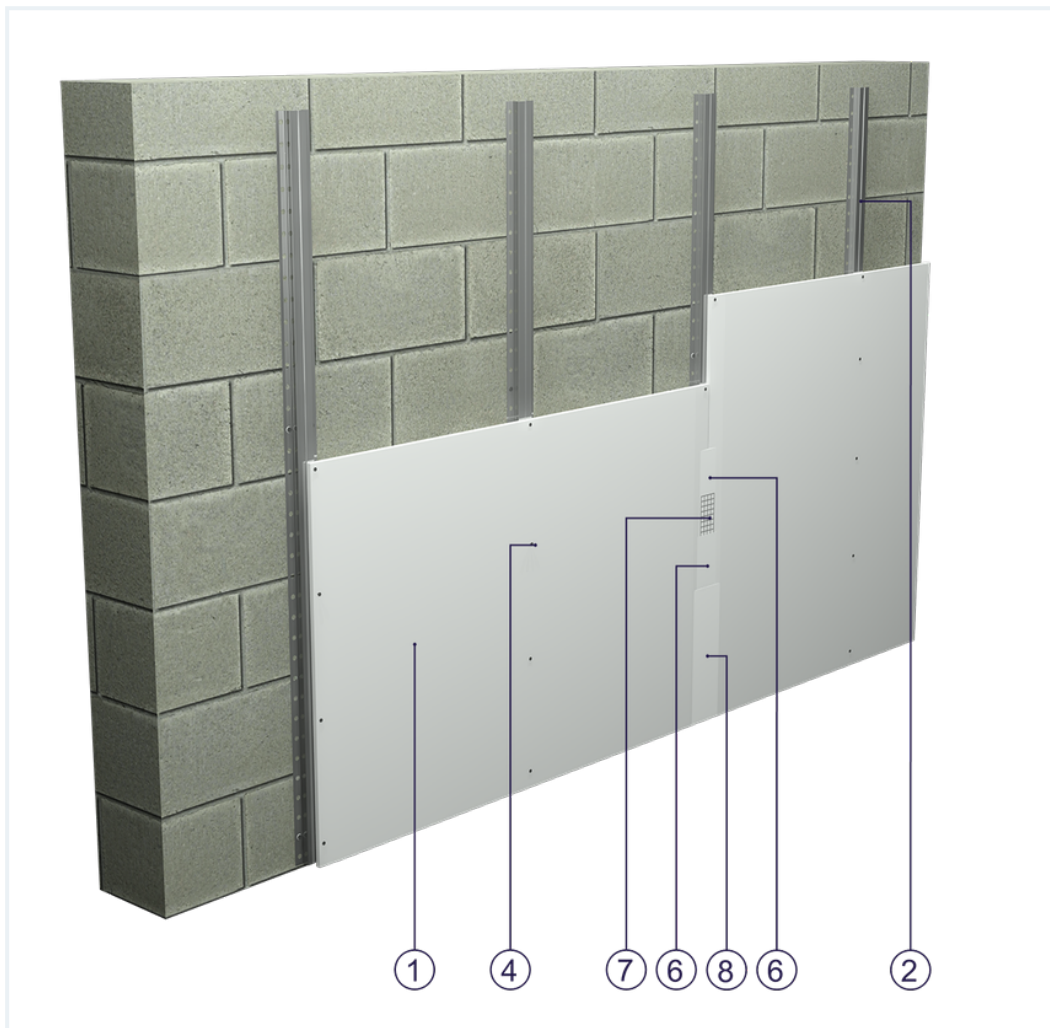


SYSTEM DATASHEET

Wall cladding OS - 1x12,5 GKB A/KAP/0,50

on top hat profile structure 0.5 mm with single-sheathing with GKB type A boards , thickness: 12.5 mm without mineral wool filling




Wall cladding elements

1. Norgips S GKB type A plasterboards of 12.5 mm thickness 12.5 mm
2. Norgips top hat profiles, max. axial spacing every 60 cm **1)1)1)1)1)1)1)1)**
3. Optional Norgips sealing tape, width 75 mm
4. Norgips 3.5 x 25 mm sheet metal screws, max. spacing every 25 cm
5. Steel dowels, min. \varnothing 6 x 40 mm in two rows every 100 cm
6. Norgips Start & Finish ready-made joint compound or Norgips Start gypsum joint compound
7. Norgips reinforcing tape
8. Ready-made joint compound Norgips Extra Finish, ready-made joint compound Norgips Start & Finish, gypsum joint compound Norgips Finish

Technical data

 Max height
4.0 m

 Wall mass
8 kg/m²

 Cladding mass
10 kg/m²

The above-mentioned parameters apply to a partition made of sheet metal profiles with a thickness of 0.5 mm.

1) If profiles are used in the horizontal orientation, their maximum profile axial spacing must be decreased to 500 mm. Moreover, the material consumption must be corrected using the calculator.

Standard

 SMART

Provides a lightweight stable body with proven performance. The solution guarantees quality at an attractive price.

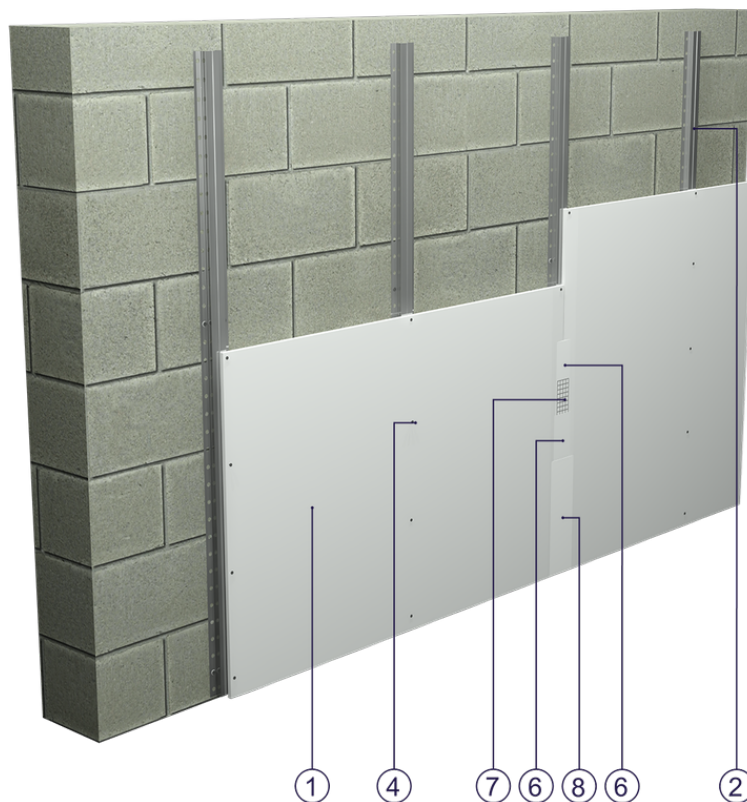


Fig. 1. Wall cladding view

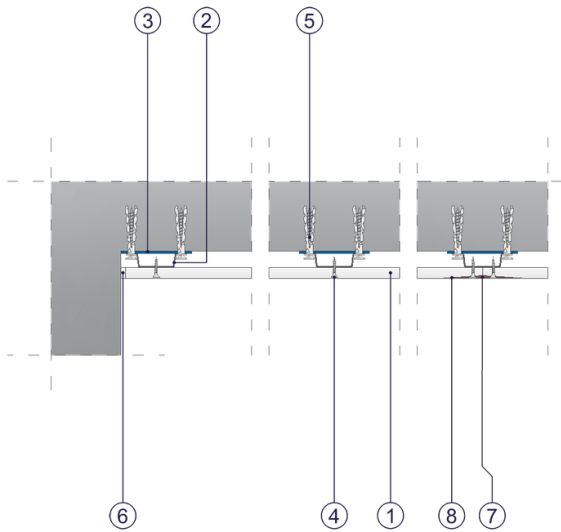


Fig. 2. Wall cladding horizontal section

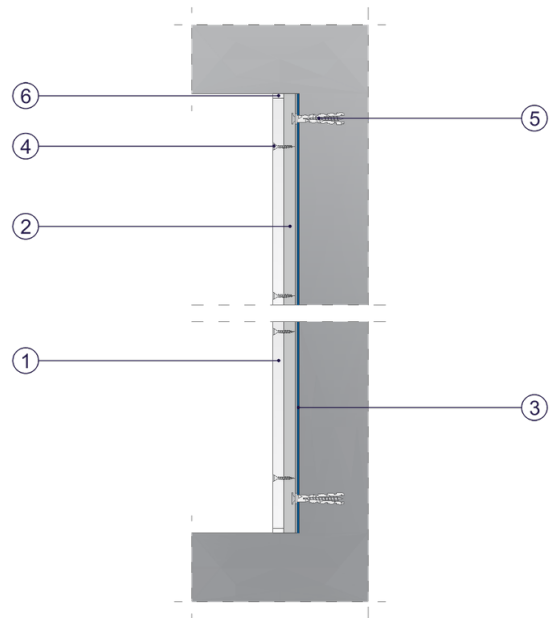


Fig. 3. Wall cladding vertical section