


Technical data

 Max height
2.5 m ¹⁾

 Wall mass
17 kg/m² ³⁾

 Acoustic insulation
 $R_W=41$ dB ⁴⁾ $R_{A1}=38$ dB ⁴⁾

The above-mentioned parameters apply to a partition made of sheet metal profiles with a thickness of 0.5 mm.

- 1) The stated heights apply to constructions with a profile spacing of 600 mm. When a structure with profiles spaced every 300 or 400 mm is used, the permissible wall height increases. Contact system provider representatives for details. The stated heights apply to rooms where only a few persons are present simultaneously (e.g. rooms in flats, hotels, hospitals). In rooms where a large number of persons are present simultaneously (e.g. conference rooms, classrooms, lecture halls), the permissible height is 2.8 m.
- 3) The weight specified does not include the insulation material weight.
- 4) Based on report no. LZF00-02038/16/Z00NZF for 50 mm glass wool

Standard

 SMART

Provides a lightweight stable body with proven performance. The solution guarantees quality at an attractive price.

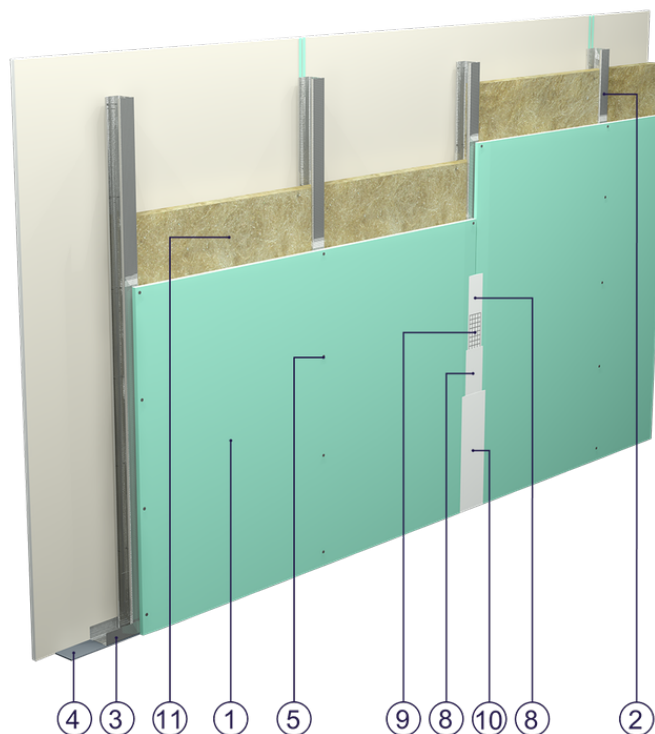


Fig. 1. Partition wall view

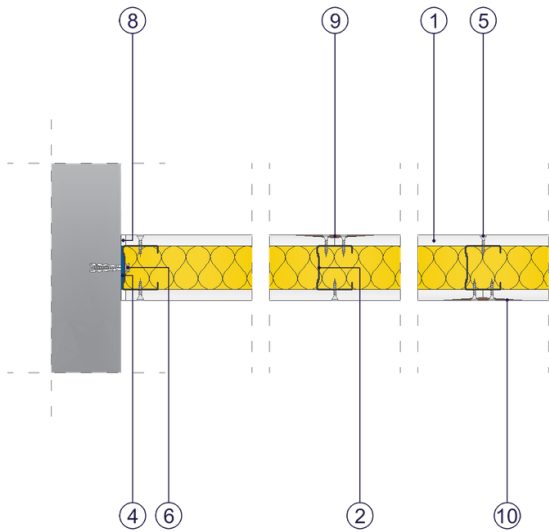


Fig. 2. Partition wall horizontal section

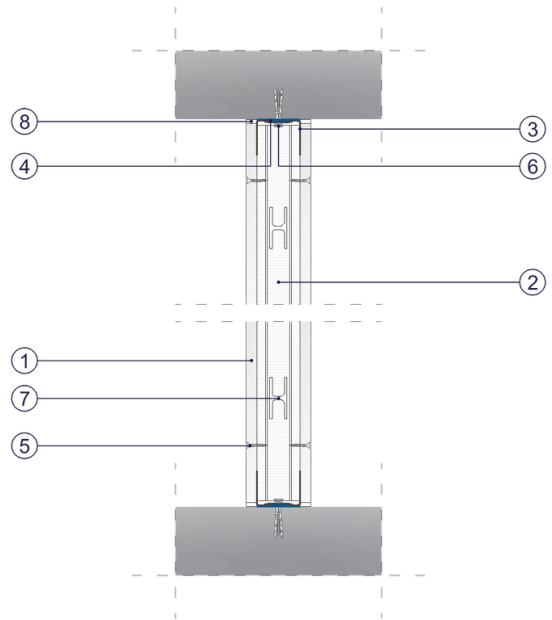


Fig. 3. Partition wall vertical section