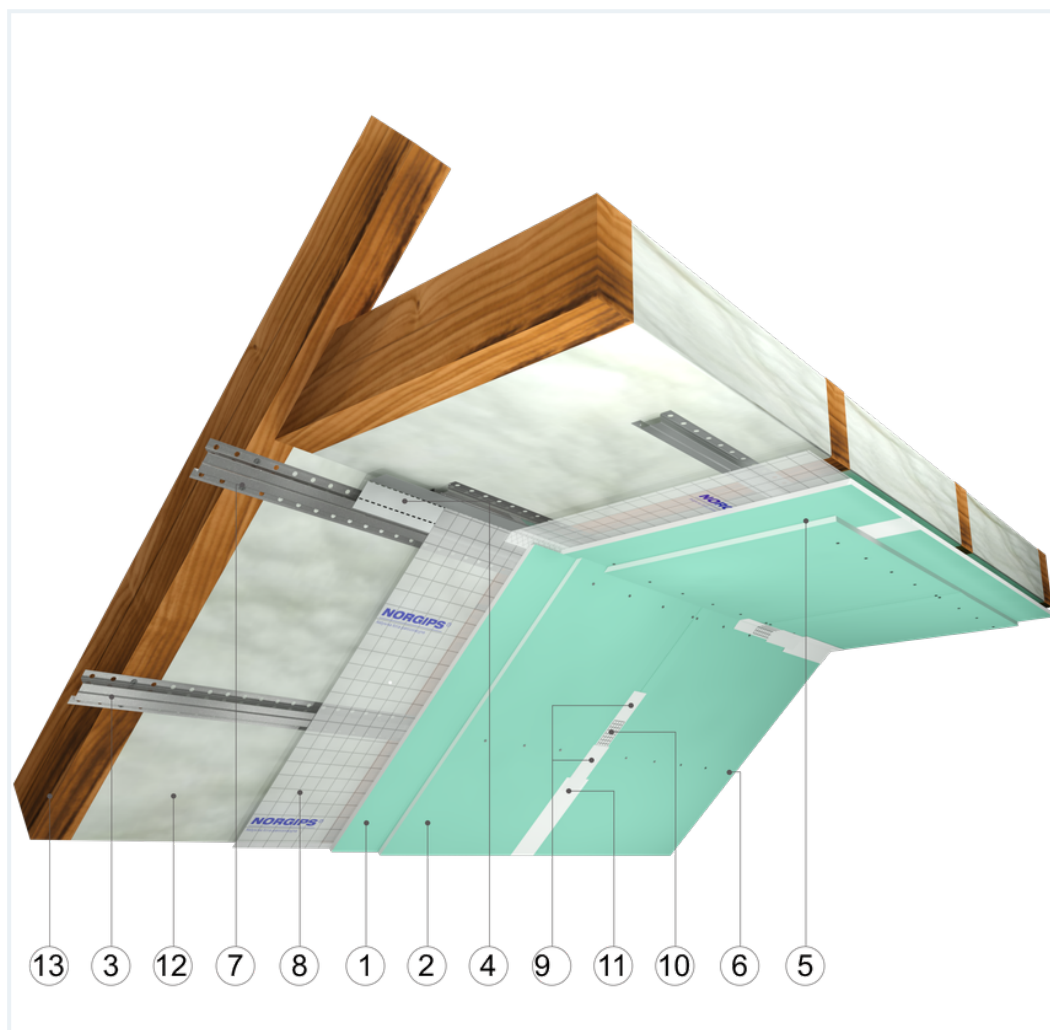


SYSTEM DATASHEET

Attic lining ZP - 2x12,5 GKBI H2 + GKFI DFH2/KAP, PUR

on a hat profile structure with double hybrid sheathing with GKBI type H2 boards, thickness 12.5 mm and GKFI type DFH2 with a thickness of 12.5 mm



Attic lining elements

1. Norgips S GKBI type H2 gypsum plasterboard , thickness: 12.5 mm
2. Norgips S GKFI type DFH2 gypsum plasterboard , thickness: 12.5 mm
3. Norgips top hat profiles, max. axial spacing every 40 cm
4. Norgips FLEX universal profile
5. Norgips 3.5 x 25 mm sheet metal screws, max. spacing every 40 cm
6. Norgips 3.5 x 35 mm sheet metal screws, max. spacing every 17 cm
7. Norgips 3.5 x 35 mm wood screws
8. Vapour barrier membrane
9. Norgips Start & Finish ready-made joint compound or Norgips Start gypsum joint compound
10. Norgips reinforcing tape
11. Ready-made joint compound Norgips Extra Finish, ready-made joint compound Norgips Start & Finish, gypsum joint compound Norgips Finish
12. PUR foam
13. Roof rafters

Technical data

 Fire resistance class REI 30 ¹⁾	 Lining weight 20 kg/m ² ²⁾
---	---

The above-mentioned parameters apply to a partition made of sheet metal profiles with a thickness of 0.55 and 0.6 mm.

In the ZP system - 2x12.5 GKBI H2/GKFI 60. KAP, W the use of sheet metal profiles with a thickness of 0.5 mm is not allowed.

1) Based on classification no. LBO-077-KZ/26E

2) The weight specified does not include the insulation material weight.

Standard

★★ **RECOMMENDED**

It provides higher building stability, fire resistance and sound insulation. The optimal solution.



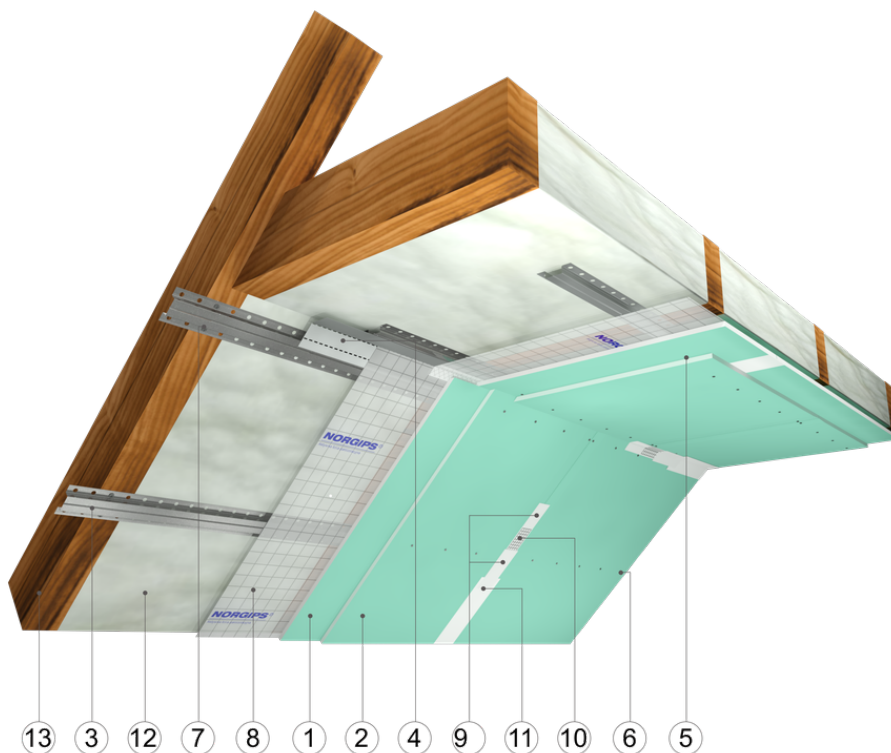


Fig. 1. Attic view

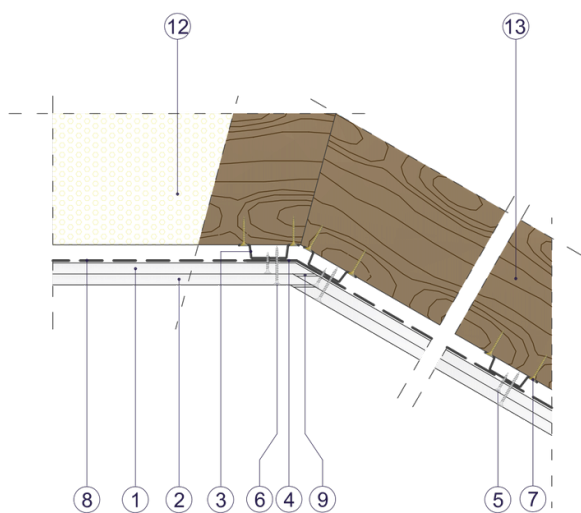


Fig. 2. Attic horizontal section

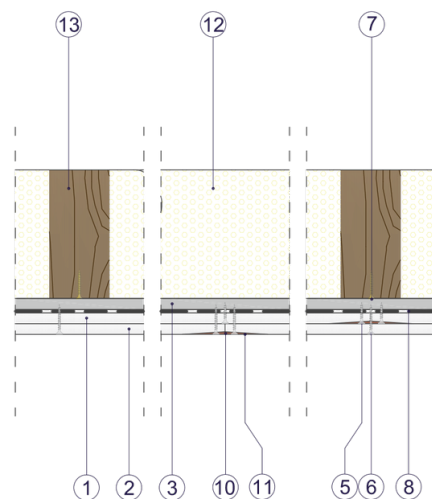


Fig. 3. Attic vertical section