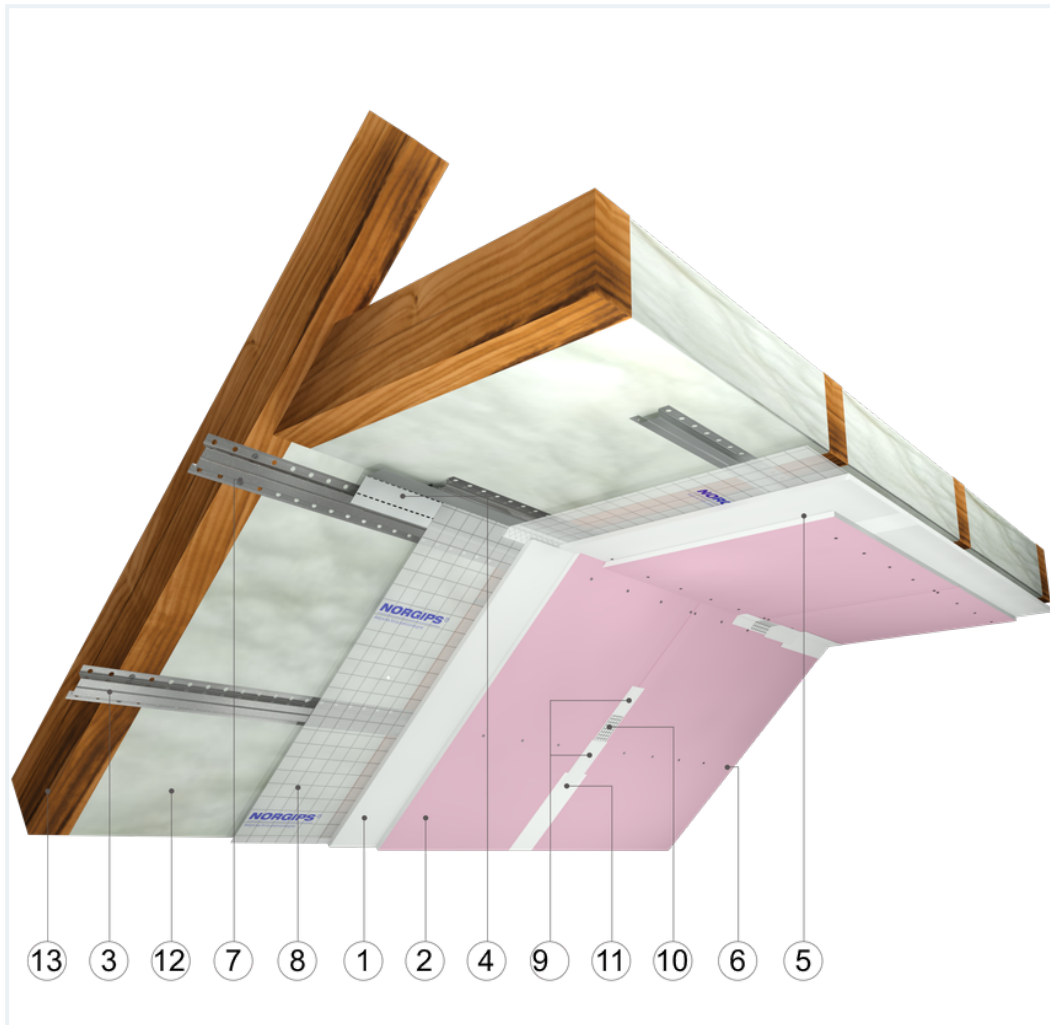


## SYSTEM DATASHEET

### Attic lining ZP - 2x12,5 GKB A + GKF DF/KAP, PUR

on a hat profile structure, hybrid with double cladding of GKB type A boards, thickness: - on a hat profile structure, hybrid. 12.5 mm and Type DF GRP with a thickness of 12.5 mm



## Attic lining elements

1. Norgips S GKB type A plasterboards of 12.5 mm thickness 12.5 mm
2. Norgips S GKF type DF gypsum plasterboard , thickness: 12.5 mm
3. Norgips top hat profiles, max. axial spacing every 40 cm
4. Norgips FLEX universal profile
5. Norgips 3.5 x 25 mm sheet metal screws, max. spacing every 40 cm
6. Norgips 3.5 x 35 mm sheet metal screws, max. spacing every 17 cm
7. Norgips 3.5 x 35 mm wood screws
8. Vapour barrier membrane
9. Norgips Start & Finish ready-made joint compound or Norgips Start gypsum joint compound
10. Norgips reinforcing tape
11. Ready-made joint compound Norgips Extra Finish, ready-made joint compound Norgips Start & Finish, gypsum joint compound Norgips Finish
12. PUR foam
13. Roof rafters

## Technical data

 Fire resistance class REI 30 <sup>1)</sup>	 Lining weight 19 kg/m <sup>2</sup> <sup>2)</sup>
---	---

The above-mentioned parameters apply to a partition made of sheet metal profiles with a thickness of 0.55 and 0.6 mm.

In the ZP system - 2x12.5 GKB A/GKF 60. PUR the use of sheet metal profiles with a thickness of 0.5 mm is not allowed.

**1)** Based on classification no. LBO-077-KZ/26E

**2)** The weight specified does not include the insulation material weight.

## Standard

★★ **RECOMMENDED**

It provides higher building stability, fire resistance and sound insulation. The optimal solution.



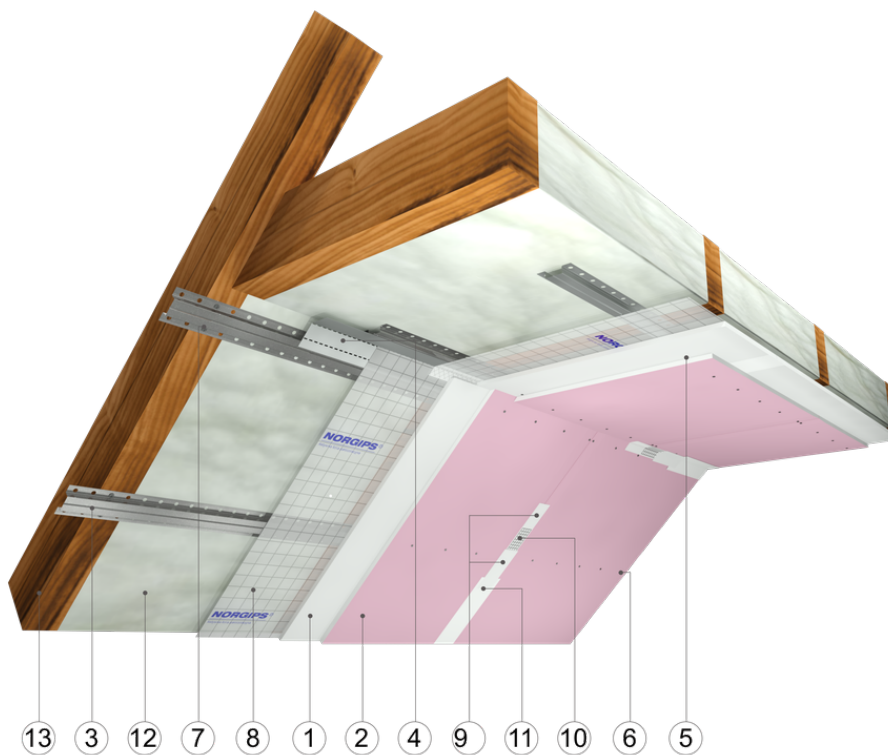


Fig. 1. Attic view

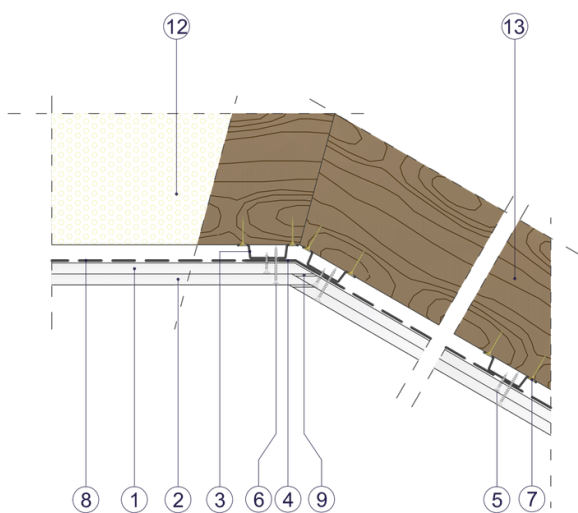


Fig. 2. Attic horizontal section

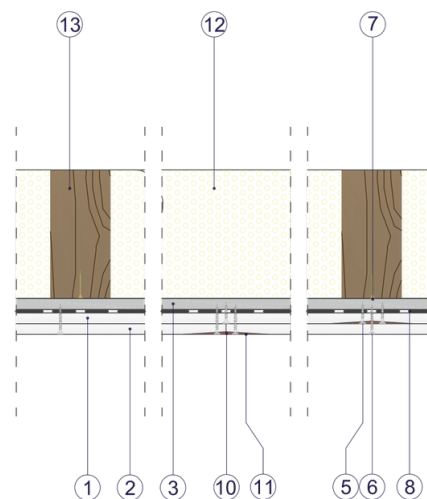


Fig. 3. Attic vertical section