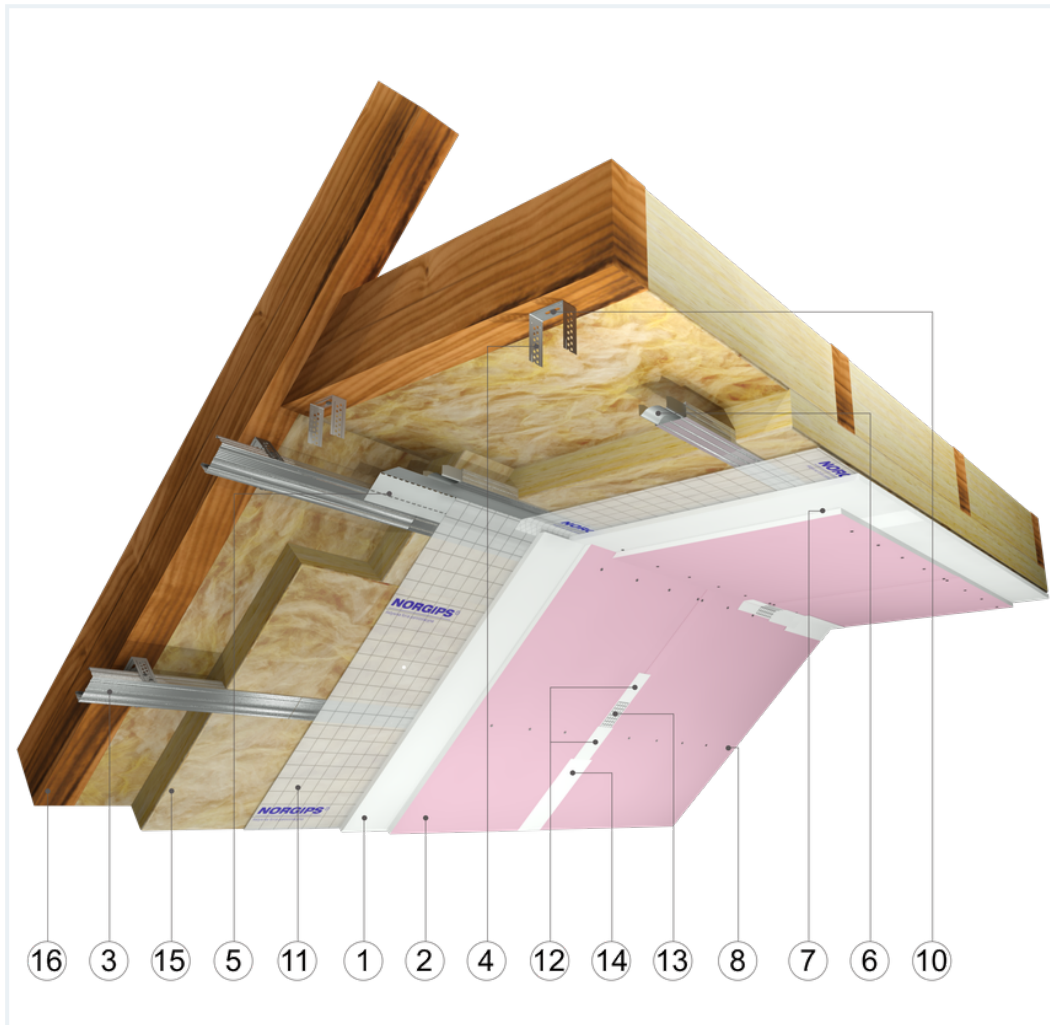


SYSTEM DATASHEET

Attic lining ZP - 2x12,5 GKB A + GKF DF/CD 60, ES, W

on a structure made of CD 60 profiles and ES/ES Plus hangers, hybrid with double sheathing with GKB type A boards , thickness: 12.5 mm and Type DF GRP with a thickness of 12.5 mm



Attic lining elements

1. Norgips S GKB type A plasterboards of 12.5 mm thickness 12.5 mm
2. Norgips S GKF type DF gypsum plasterboard , thickness: 12.5 mm
3. Norgips CD 60 profiles, max. axial spacing every 40 cm**
4. Norgips ES/ES Plus hangers
5. Norgips FLEX universal profile
6. Norgips longitudinal connectors mounted with 4 3.5x9.5 mm sheet metal screws with a self-tapping tip
7. Norgips 3.5 x 25 mm sheet metal screws, max. spacing every 40 cm
8. Norgips 3.5 x 35 mm sheet metal screws, max. spacing every 17 cm
9. Norgips 3.5 x 9.5 mm sheet metal screws with a self-tapping tip
10. Norgips 3.5 x 35 mm wood screws
11. Vapour barrier membrane
12. Norgips Start & Finish ready-made joint compound or Norgips Start gypsum joint compound
13. Norgips reinforcing tape
14. Ready-made joint compound Norgips Extra Finish, ready-made joint compound Norgips Start & Finish, gypsum joint compound Norgips Finish
15. Mineral wool
16. Roof rafters

Technical data



Fire resistance class
REI 30 ²⁾



Lining weight
20 kg/m² ¹⁾

The above-mentioned parameters apply to a partition made of sheet metal profiles with a thickness of 0.55 mm and 0.6 mm or 0.55 mm

In the ZP system - 2x12.5 GKF DF/CD 60. ES, W the use of sheet metal profiles with a thickness of 0.5 mm is not allowed.

1) The weight specified does not include the insulation material weight.

2) Based on classification no. LBO-077-KZ/26E

Standard

★★ RECOMMENDED

It provides higher building stability, fire resistance and sound insulation. The optimal solution.



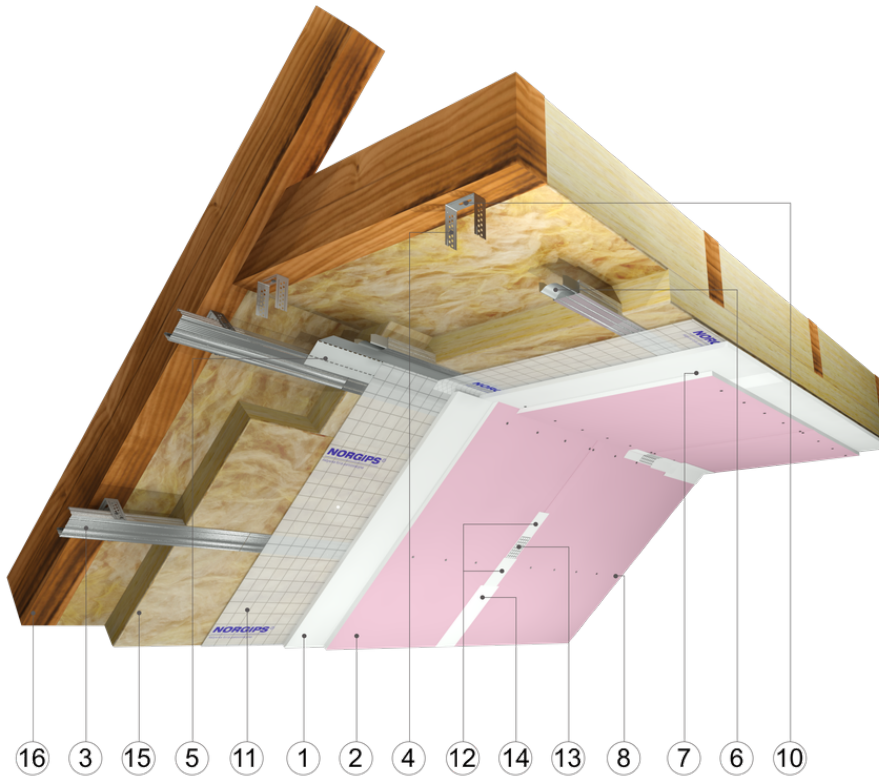


Fig. 1. Attic view

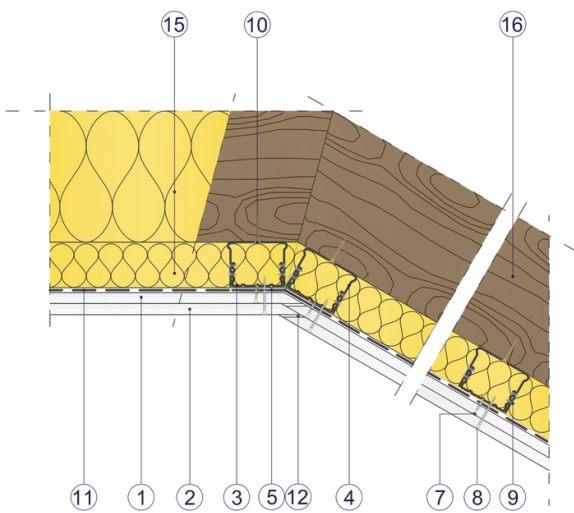


Fig. 2. Attic horizontal section

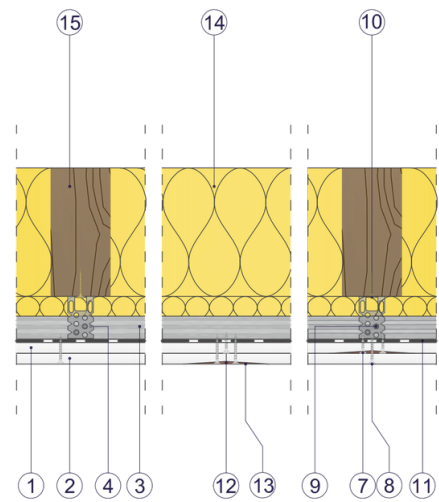


Fig. 3. Attic vertical section