

SYSTEM DATASHEET

Wall cladding OS - 2x12,5 GKB A + ACO A/KAP

on a hat profile structure, hybrid with double sheathing with GKB type A boards, thickness 12.5 mm and Acoustic Type A with a thickness of 12.5 mm without mineral wool filling



Wall cladding elements


1. Norgips S GKB type A plasterboards of 12.5 mm thickness 12.5 mm
2. Norgips S GKB type A plasterboards of 12.5 mm thickness 12.5 mm
3. Norgips top hat profiles, max. axial spacing every 60 cm ¹⁾¹⁾¹⁾¹⁾¹⁾¹⁾¹⁾¹⁾
4. Optional Norgips sealing tape, width 75 mm
5. Norgips 3.5 x 25 mm sheet metal screws, max. spacing every 75 cm
6. Norgips 3.5 x 35 mm sheet metal screws, max. spacing every 25 cm
7. Steel dowels, min. \varnothing 6 x 40 mm in two rows every 100 cm
8. Norgips Start & Finish ready-made joint compound or Norgips Start gypsum joint compound
9. Norgips reinforcing tape
10. Ready-made joint compound Norgips Extra Finish, ready-made joint compound Norgips Start & Finish, gypsum joint compound Norgips Finish

Technical data

	Max height 12.0 m
---	----------------------

	Wall mass 17 kg/m ²
---	-----------------------------------

	Cladding mass 19 kg/m ²
---	---------------------------------------

	Acoustic insulation $\Delta R_w = 12 \text{ dB}^{2)}$
---	--

The above-mentioned parameters apply to a partition made of sheet metal profiles with a thickness of 0.55 mm and 0.6 mm or 0.55 mm

- 1) If profiles are used in the horizontal orientation, their maximum profile axial spacing must be decreased to 500 mm. Moreover, the material consumption must be corrected using the calculator.
- 2) Estimated increase in acoustic insulation effectiveness on the basis of the DIN 4109 standard

Standard

★★ RECOMMENDED

It provides higher building stability, fire resistance and sound insulation. The optimal solution.



Fig. 1. Wall cladding view

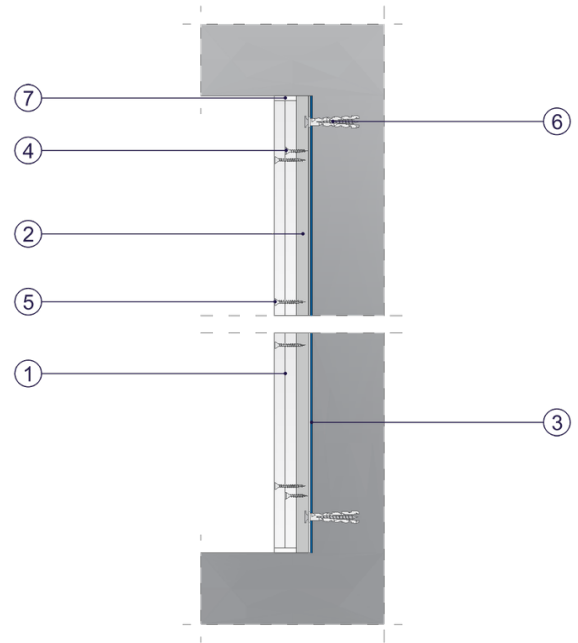
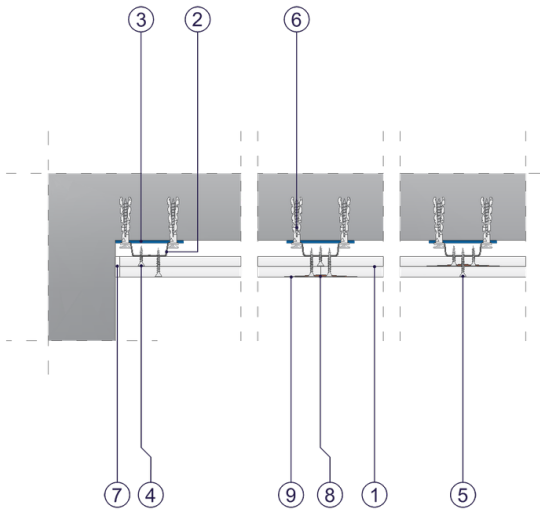


Fig. 3. Wall cladding vertical section