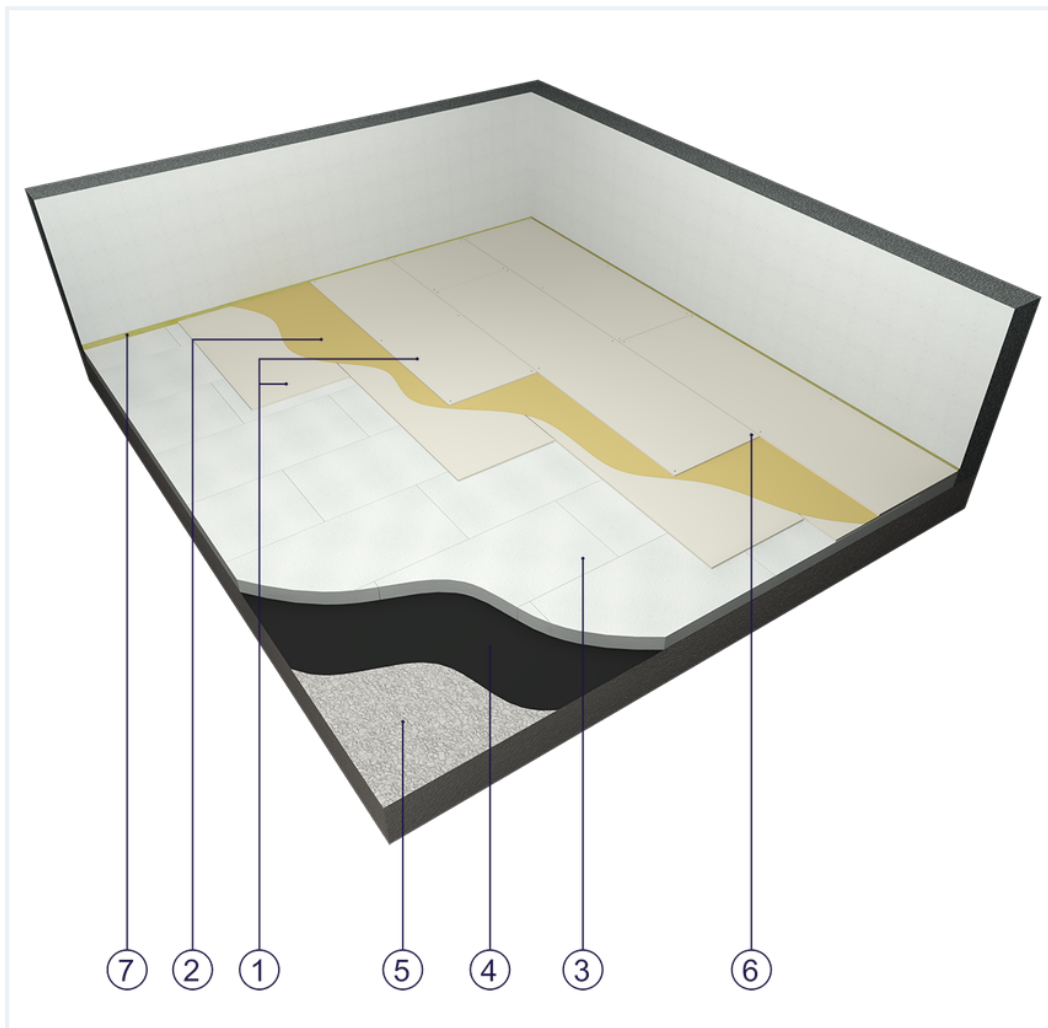


## SYSTEM DATASHEET

### Dry screed SJ - 2x12,5 DFIR/PI

Flooring undercoat made of DFIR type Floor Boards 2 x 12.5 mm thick on an insulation board base



### Dry screed elements

1. Norgips KP type DFIR gypsum plasterboard , thickness: 12.5 mm
2. Linoleum, vinyl or parquet floor adhesive
3. Insulation board base (e.g. EPS 100 - 0,38, high-density mineral wool)
4. Optional moisture insulation of insulation tar board of PE film
5. Fixed base (e.g. concrete)
6. Norgips wood screws 3.5 x 25 mm or staples C 4/23 mm
7. Expansion joint - 10 mm mineral wool

### Technical data



Dry screed mass  
27.0 kg/m<sup>2</sup> <sup>1)</sup>



Acoustic insulation  
 $\Delta R_w = \text{up to } 17 \text{ dB}$  <sup>2)</sup>

The maximum surface area without expansion joints is 30 m

2.

- 1) The weight specified does not include the levelling and insulation layers.
- 2) Estimated increase in acoustic insulation effectiveness on the basis of the DIN 4109 standard

## Standard

☆☆☆ SUPER

Provides a lightweight and stable subfloor with fire resistance and high sound insulation.

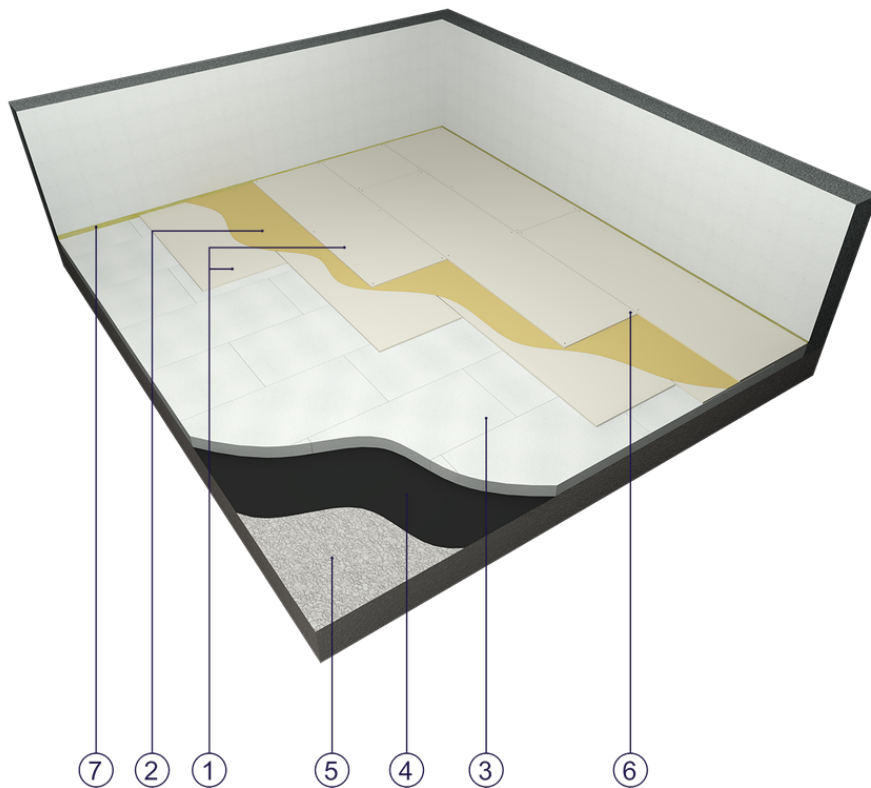


Fig. 1. Flooring view

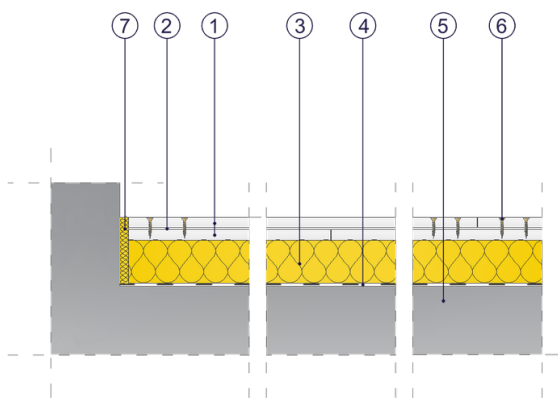


Fig. 2. Flooring vertical section

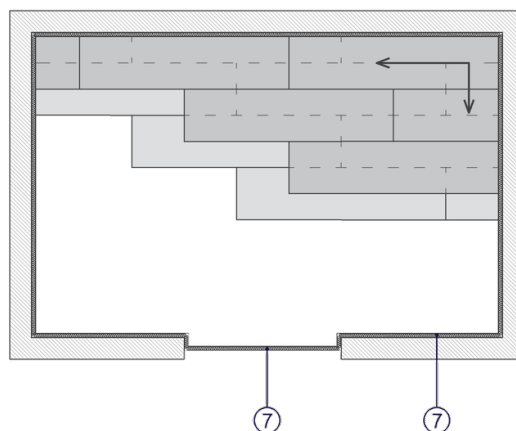


Fig. 3. Board laying sequence