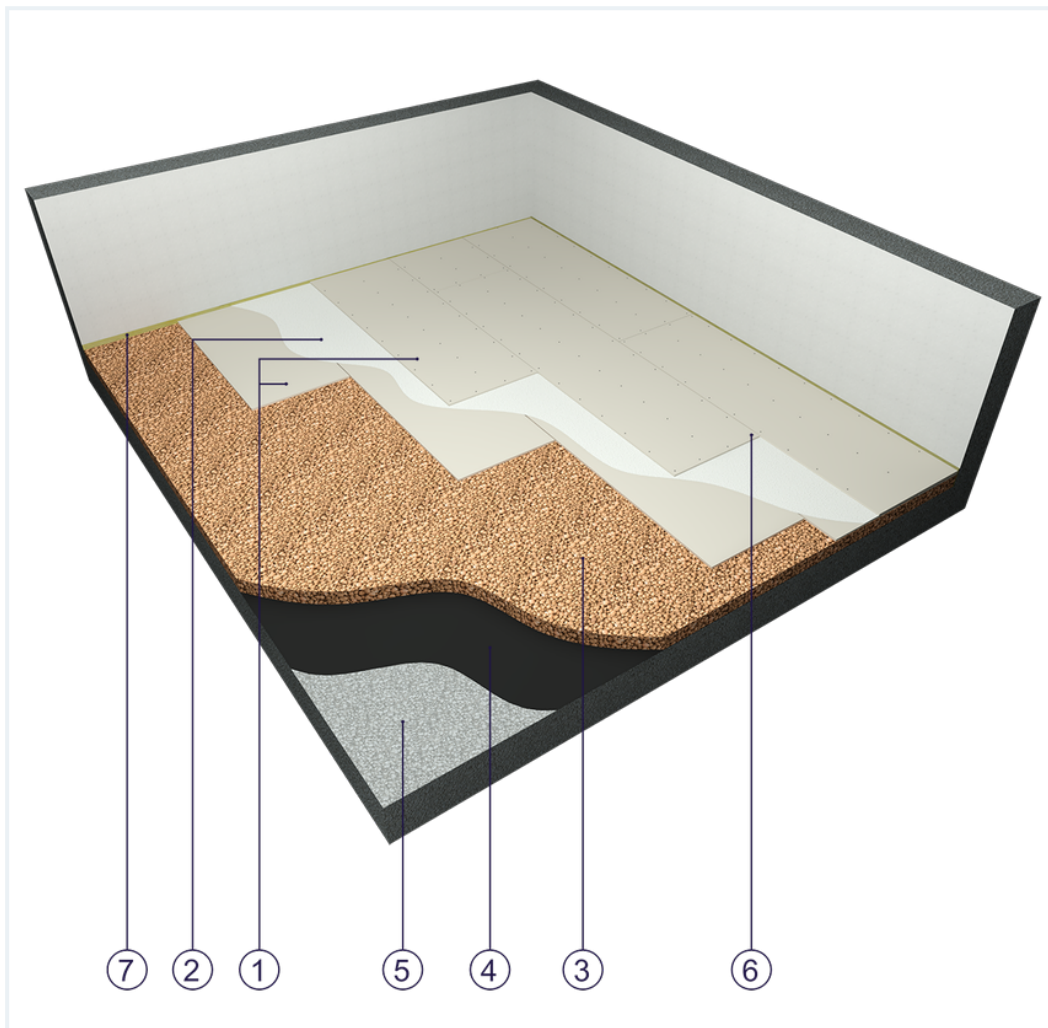


SYSTEM DATASHEET

Dry screed SJ - 2x12,5 DFIR/PK-F

Flooring undercoat made of DFIR type Floor Boards 2 x 12.5 mm thick on a loose material base



Dry screed elements

1. Norgips KP type DFIR gypsum plasterboard , thickness: 12.5 mm
2. Gypsum patch compound Norgips Start or Norgips Strong Filler
3. Levelling bedding material (e.g. expanded clay, 0/4 mm fraction), thickness from 4 to 10 cm
4. Optional moisture insulation of insulation tar board of PE film
5. Fixed base (e.g. concrete)
6. Norgips 3.5 x 25 mm wood screws or C 4/23 mm staples, max. spacing every 30 cm
7. Expansion joint - 10 mm mineral wool

Technical data



Fire resistance class
EI 60 ¹⁾



Dry screed mass
26.0 kg/m² ²⁾



Acoustic insulation
 ΔR_W =up to 17 dB ³⁾

The maximum surface area without expansion joints is 30 m

2.

1) Based on classification no. LBO-046-KZ/25

2) The weight specified does not include the levelling and insulation layers.

3) Estimated increase in acoustic insulation effectiveness on the basis of the DIN 4109 standard

Standard

☆☆☆ SUPER

Provides a lightweight and stable subfloor with fire resistance and high sound insulation.

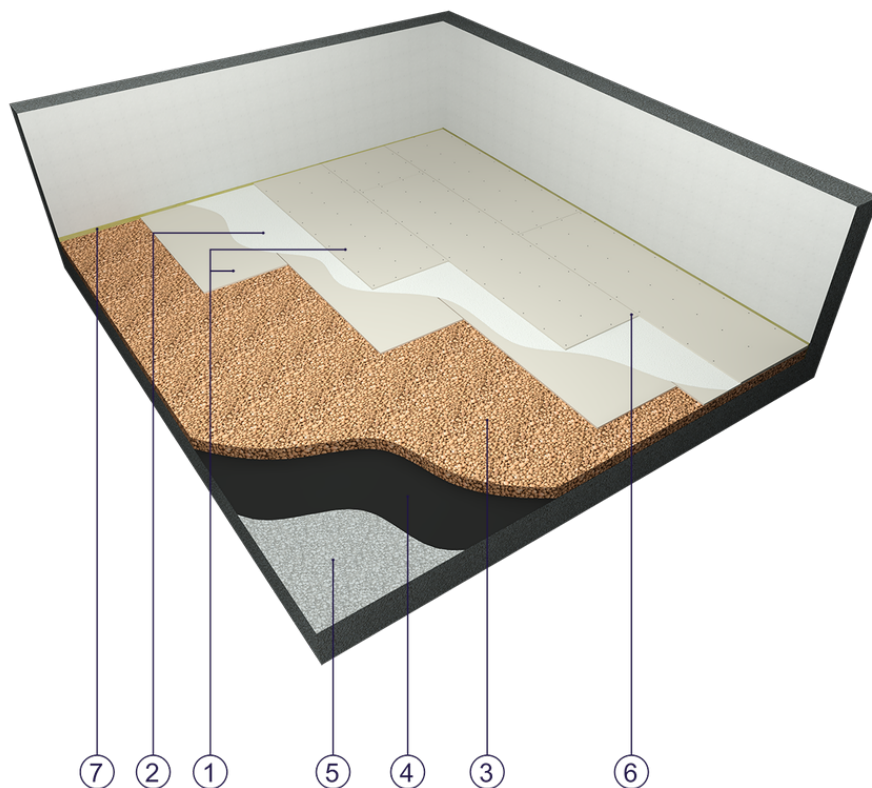


Fig. 1. Flooring view

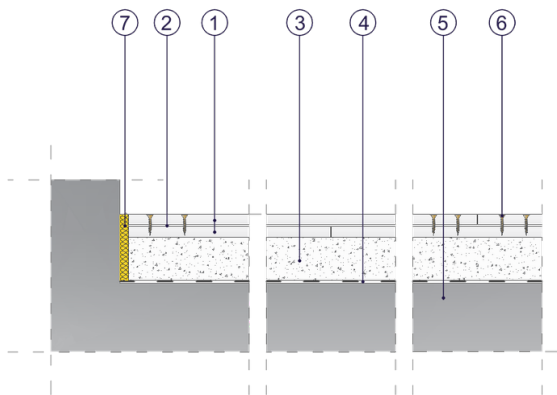


Fig. 2. Flooring vertical section

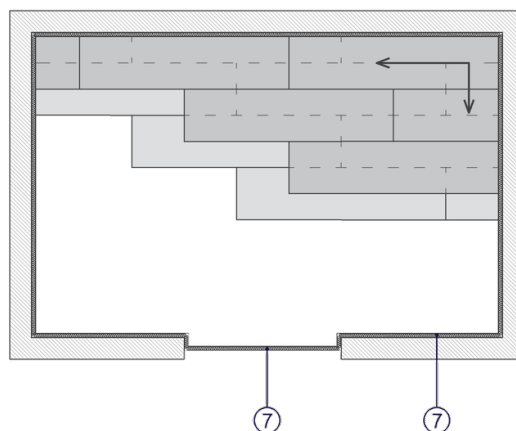


Fig. 3. Board laying sequence