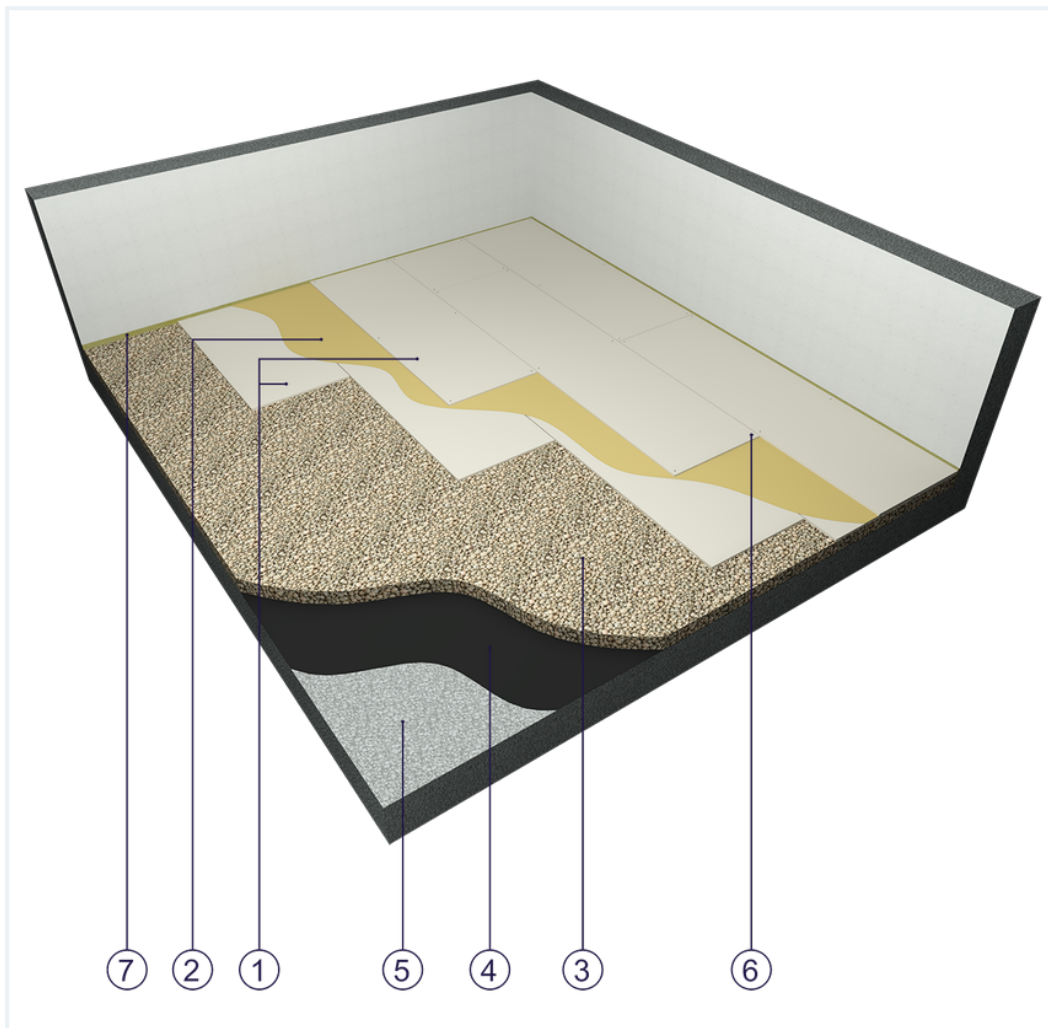


SYSTEM DATASHEET

Dry screed SJ - 2x12,5 DFIR/PK

Flooring undercoat made of DFIR type Floor Boards 2 x 12.5 mm thick on a loose material base



Dry screed elements

1. Norgips KP type DFIR gypsum plasterboard , thickness: 12.5 mm
2. Linoleum, vinyl or parquet floor adhesive
3. Levelling bedding material (e.g. expanded clay, 0/4 mm fraction), thickness from 4 to 10 cm
4. Optional moisture insulation of insulation tar board of PE film
5. Fixed base (e.g. concrete)
6. Norgips wood screws 3.5 x 25 mm or staples C 4/23 mm
7. Expansion joint - 10 mm mineral wool

Technical data



Dry screed mass
27.0 kg/m² ¹⁾



Acoustic insulation
 ΔR_w =up to 17 dB ²⁾

The maximum surface area without expansion joints is 30 m

2.

- 1) The weight specified does not include the levelling and insulation layers.
- 2) Estimated increase in acoustic insulation effectiveness on the basis of the DIN 4109 standard

Standard

☆☆☆ SUPER

Provides a lightweight and stable subfloor with fire resistance and high sound insulation.

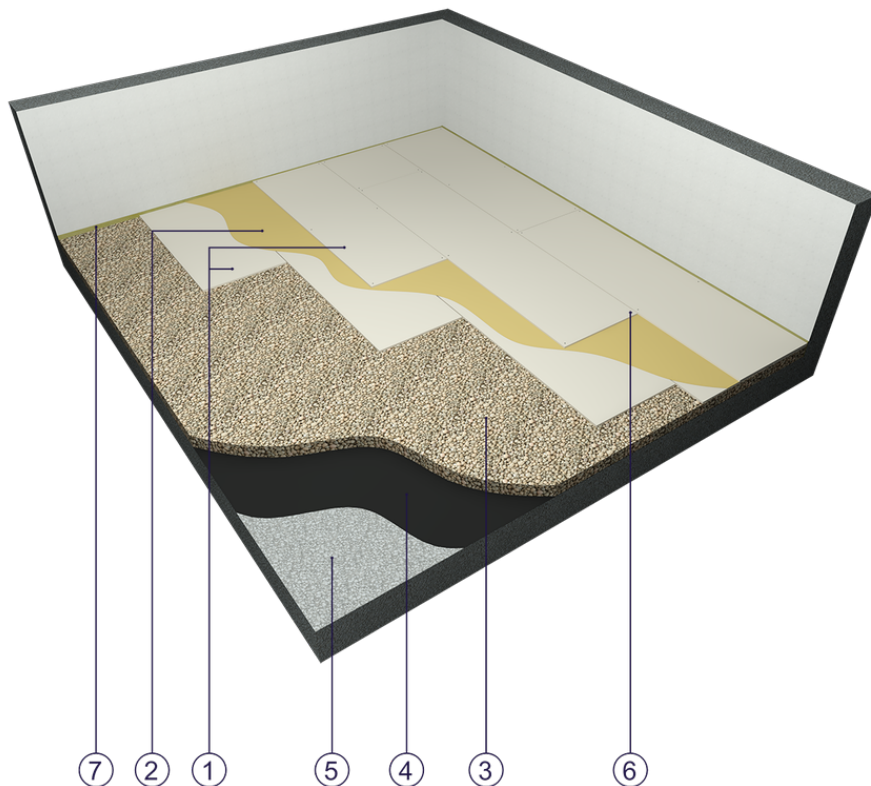


Fig. 1. Flooring view

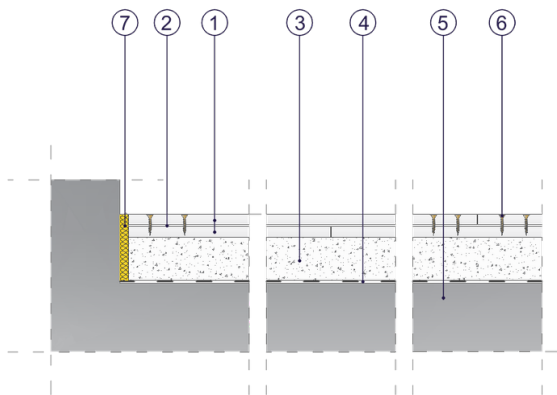


Fig. 2. Flooring vertical section

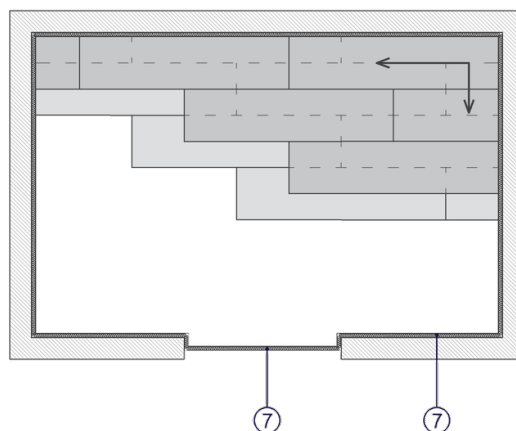


Fig. 3. Board laying sequence