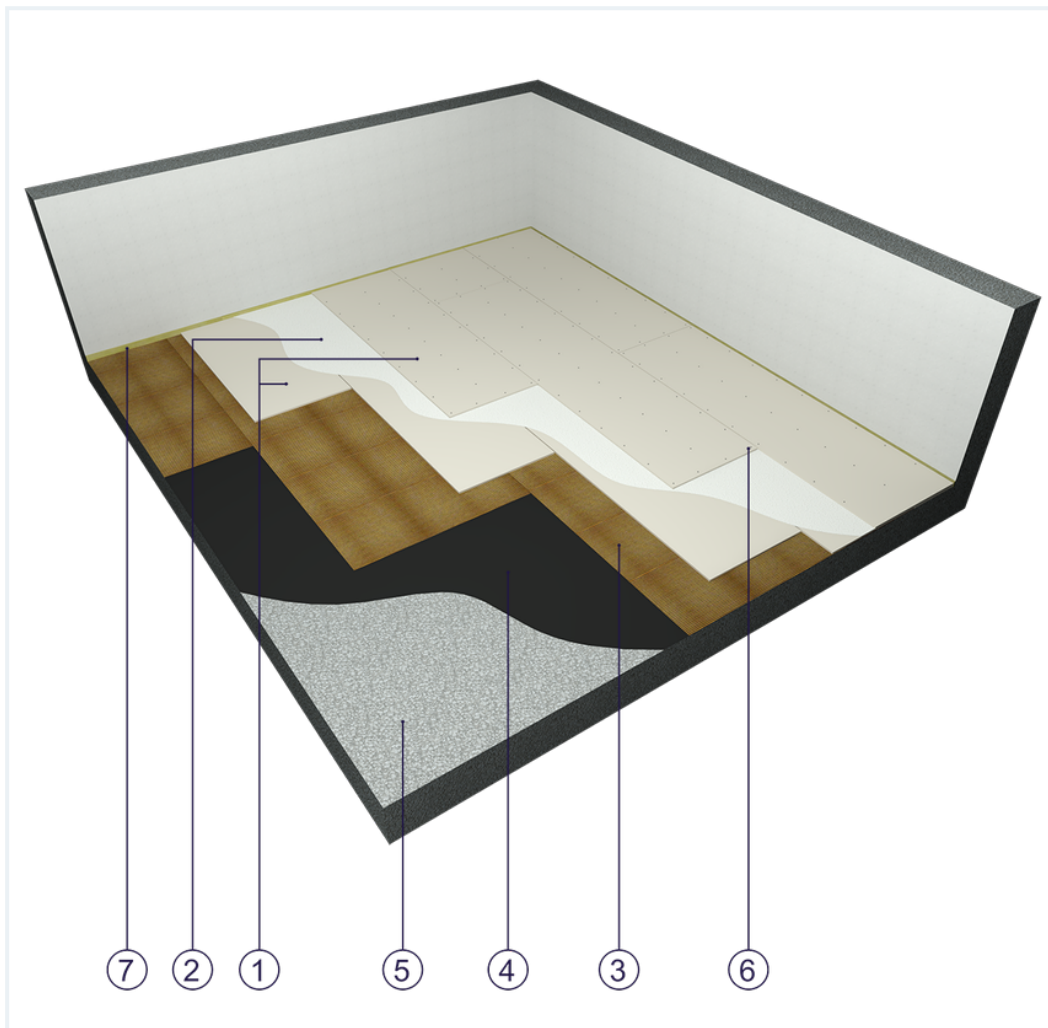


SYSTEM DATASHEET

Dry screed SJ - 2x12,5 DFIR/PS-F

Flooring undercoat made of DFIR type Floor Boards 2 x 12.5 mm thick on a fixed base



Dry screed elements

1. Norgips KP type DFIR gypsum plasterboard , thickness: 12.5 mm
2. Gypsum patch compound Norgips Start or Norgips Strong Filler
3. Levelling layer (e.g. corrugated cardboard)
4. Optional moisture insulation of insulation tar board of PE film
5. Fixed base (e.g. concrete)
6. Norgips 3.5 x 25 mm wood screws or C 4/23 mm staples, max. spacing every 30 cm
7. Expansion joint - 10 mm mineral wool

Technical data



Fire resistance class
EI 60 ¹⁾



Dry screed mass
26.0 kg/m² ²⁾



Acoustic insulation
 ΔR_W =up to 17 dB ³⁾

The maximum surface area without expansion joints is 30 m

2.

1) Based on classification no. LBO-046-KZ/25

2) The weight specified does not include the levelling and insulation layers.

3) Estimated increase in acoustic insulation effectiveness on the basis of the DIN 4109 standard

Standard

★★ RECOMMENDED

Provides a lightweight and stable underlay for floors with fire resistance.

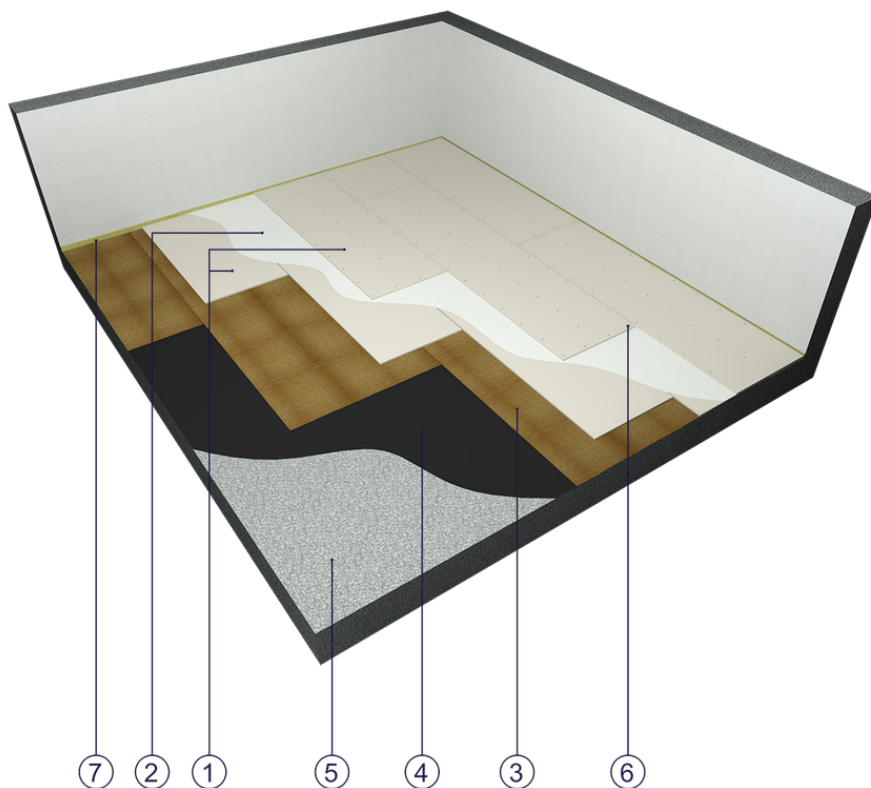


Fig. 1. Flooring view

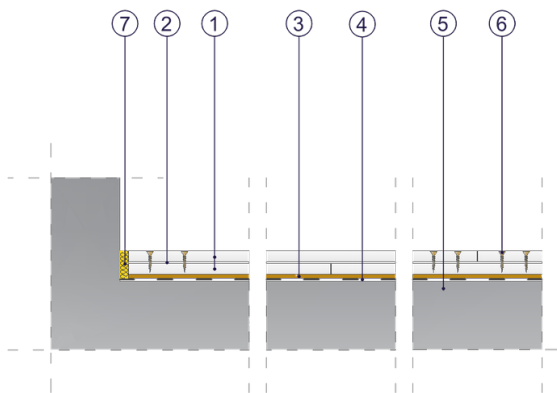


Fig. 2. Flooring vertical section

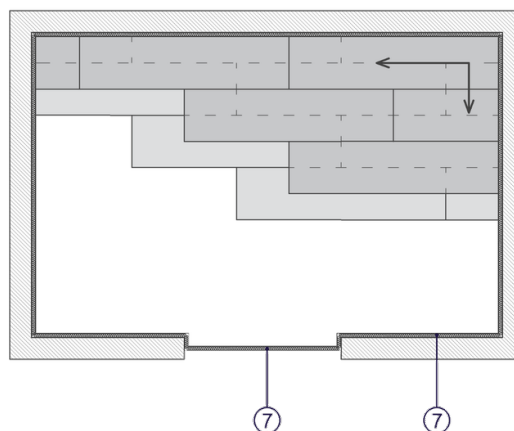


Fig. 3. Board laying sequence