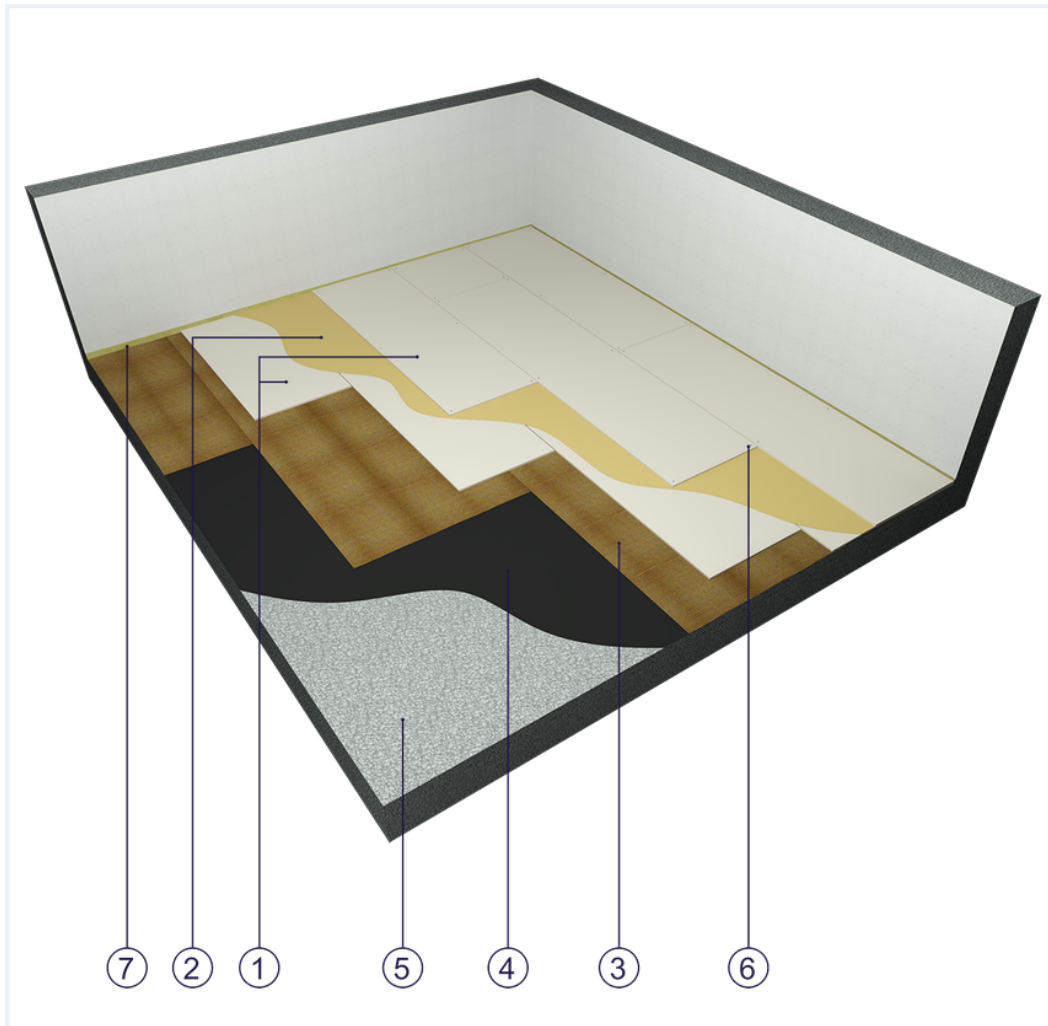


SYSTEM DATASHEET

Dry screed SJ - 2x12,5 DFIR/PS

Flooring undercoat made of DFIR type Floor Boards 2 x 12.5 mm thick on a fixed base



Dry screed elements

1. Norgips KP type DFIR gypsum plasterboard , thickness: 12.5 mm
2. Linoleum, vinyl or parquet floor adhesive
3. Levelling layer (e.g. corrugated cardboard)
4. Optional moisture insulation of insulation tar board of PE film
5. Fixed base (e.g. concrete)
6. Norgips wood screws 3.5 x 25 mm or staples C 4/23 mm
7. Expansion joint - 10 mm mineral wool

Technical data



Dry screed mass
27.0 kg/m² ¹⁾



Acoustic insulation
 ΔR_w =up to 17 dB ²⁾

The maximum surface area without expansion joints is 30 m

2.

- 1) The weight specified does not include the levelling and insulation layers.
- 2) Estimated increase in acoustic insulation effectiveness on the basis of the DIN 4109 standard

Standard

★★ RECOMMENDED

Provides a lightweight and stable underlay for floors with fire resistance.

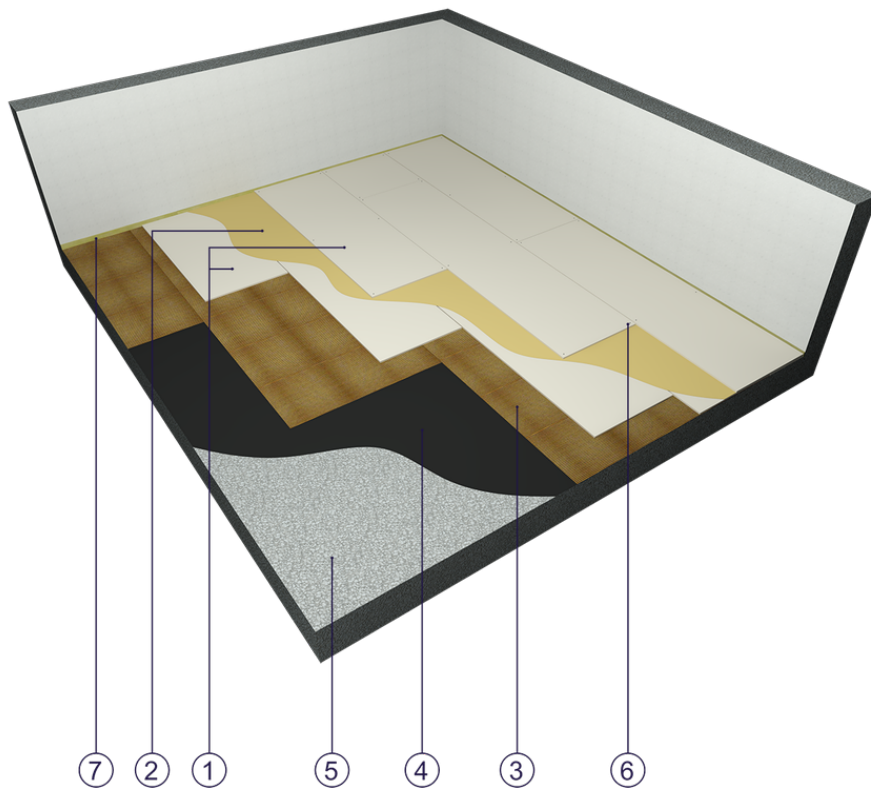


Fig. 1. Flooring view

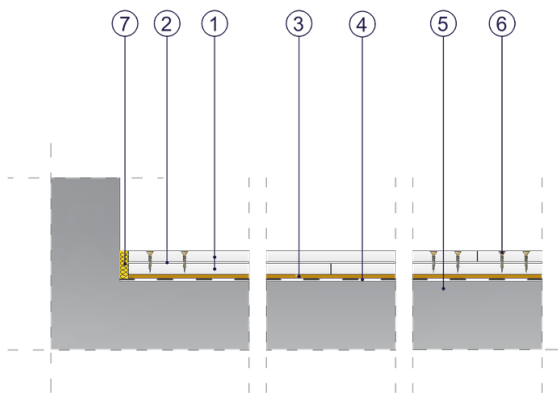


Fig. 2. Flooring vertical section

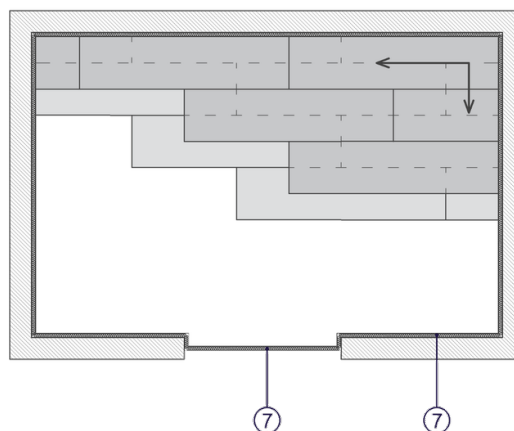


Fig. 3. Board laying sequence