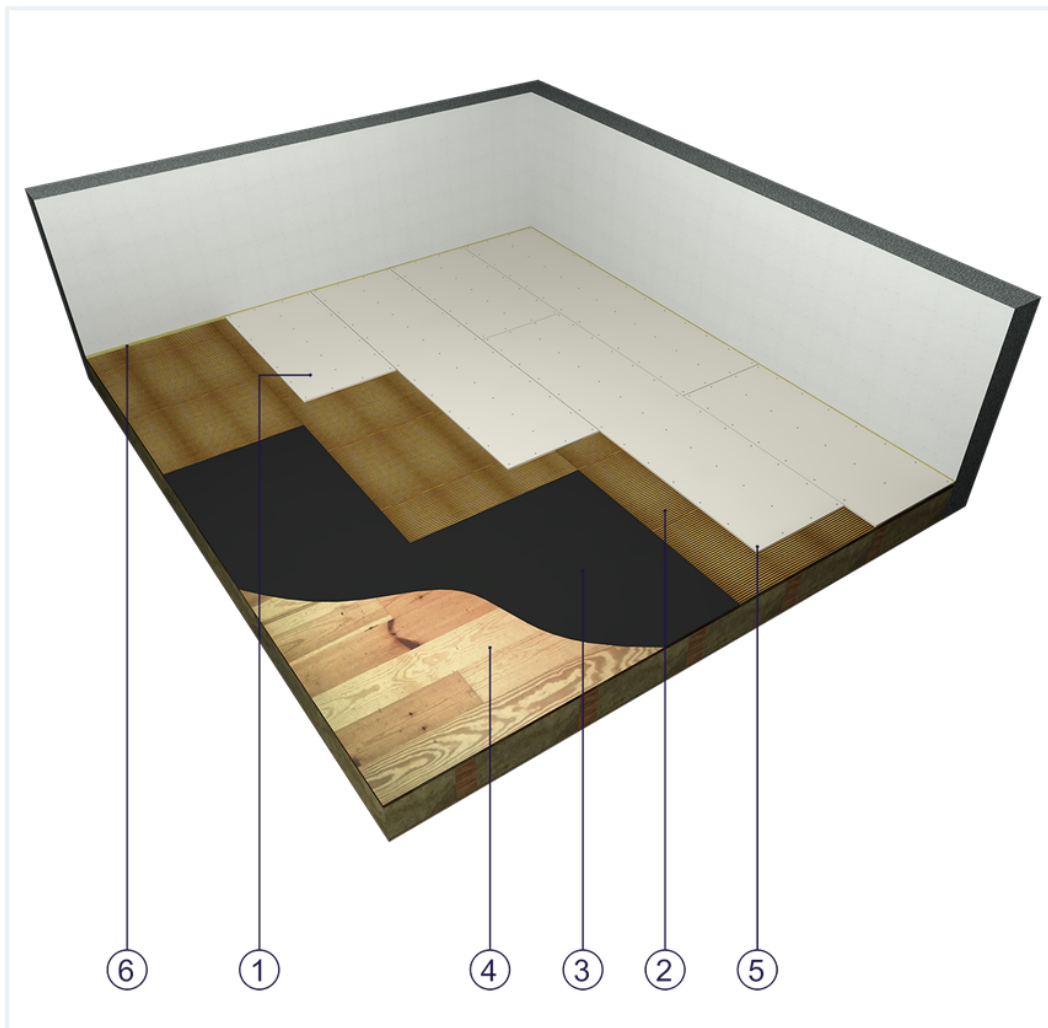


SYSTEM DATASHEET

Dry screed SJ - 1x12,5 DFIR/PD

Flooring undercoat made of DFIR type Floor Boards 1 x 12.5 mm thick on a wooden base



Dry screed elements

1. Norgips KP type DFIR gypsum plasterboard , thickness: 12.5 mm
2. Levelling layer (e.g. corrugated cardboard)
3. Optional moisture insulation of insulation tar board or PE film
4. Wooden base
5. Norgips 3.5 x 35 mm wood screws or C 20 mm staples, max. spacing every 20 cm
6. Expansion joint - 10 mm mineral wool

Technical data

	Dry screed mass 13.0 kg/m ² ¹⁾
--	---

The maximum surface area without expansion joints is 30 m

2.

- 1) The weight specified does not include the levelling and insulation layers.
- 2) Estimated increase in acoustic insulation effectiveness on the basis of the DIN 4109 standard

Standard

★ BASIC

Provides a lightweight and stable underlay for floors of the lowest thickness.

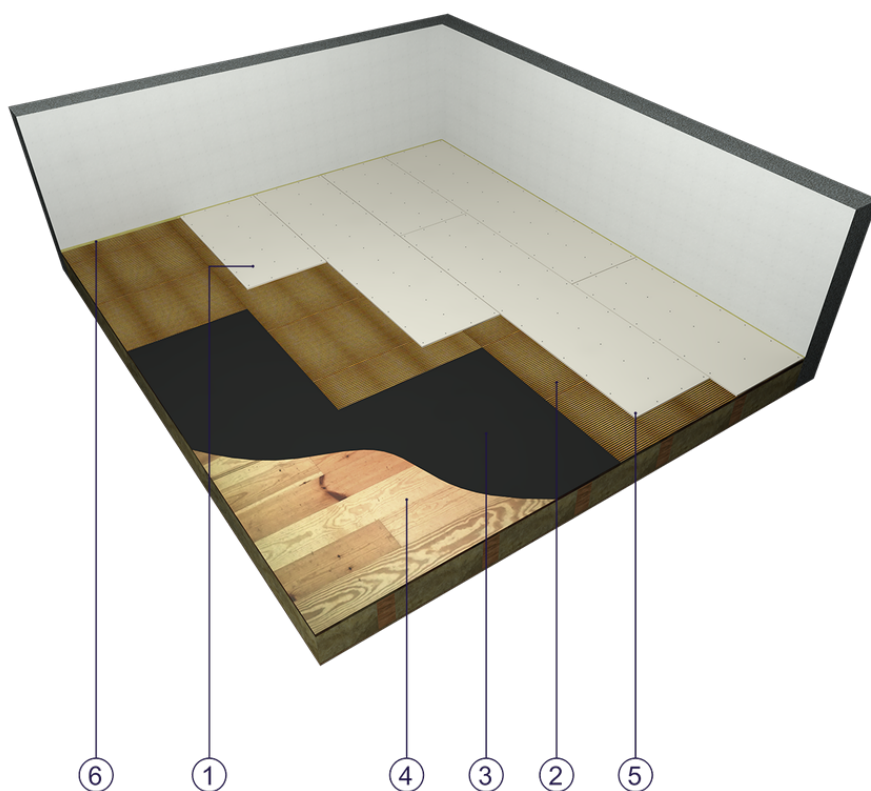


Fig. 1. Flooring view

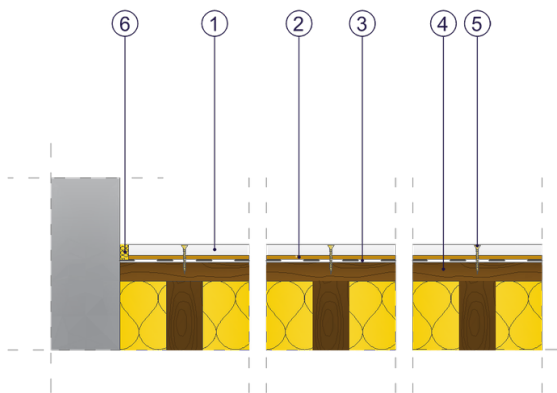


Fig. 2. Flooring vertical section

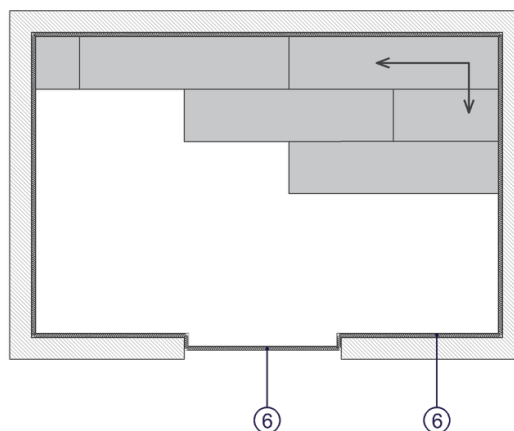


Fig. 3. Board laying sequence