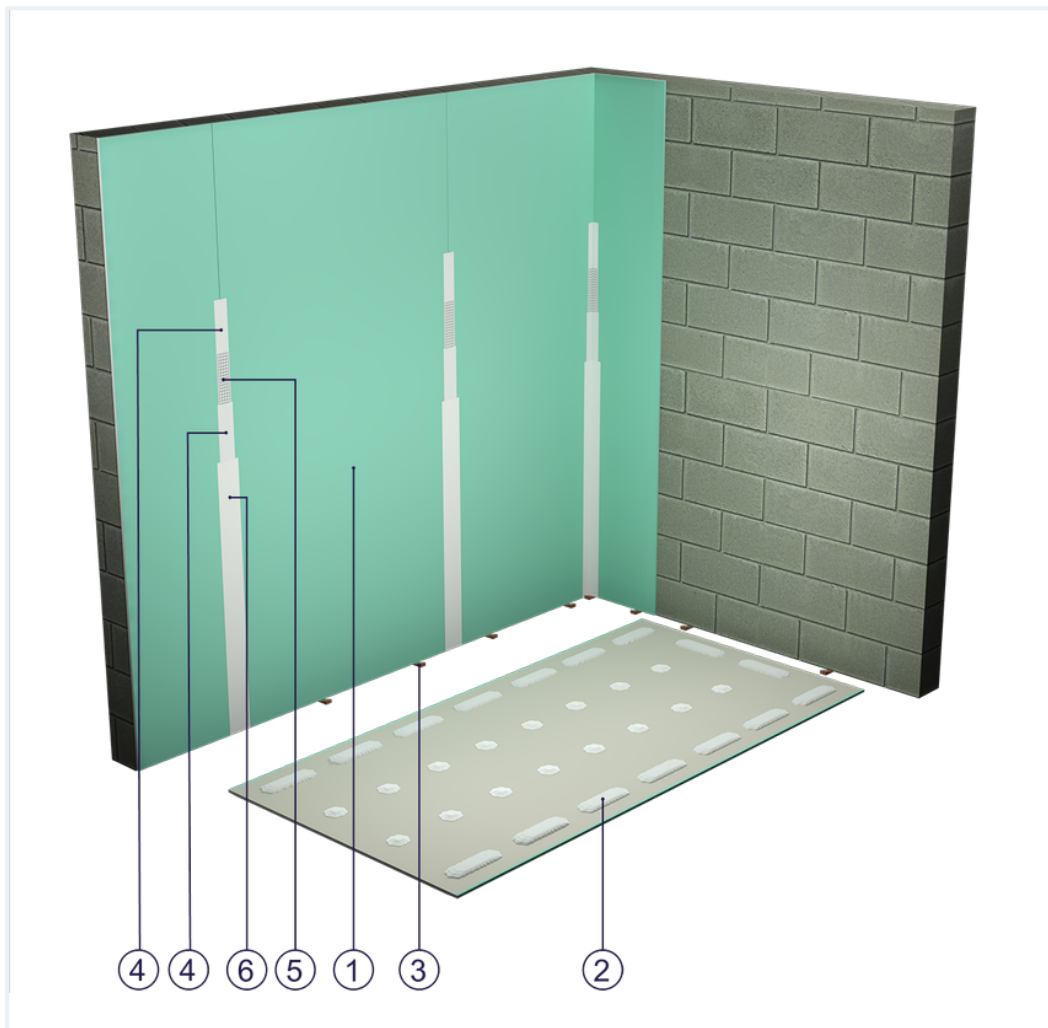


## SYSTEM DATASHEET

### Drywall lining ST - 1x12,5 GKFI DFH2

of plasterboard type DFH2 with a thickness of 12.5 mm fixed to a surface using a gypsum adhesive



### Drywall elements

1. Norgips S GKFI type DFH2 gypsum plasterboard , thickness: 12.5 mm
2. Norgips Bonding Fix T gypsum adhesive
3. Plasterboard pads
4. Norgips Start & Finish ready-made joint compound or Norgips Start gypsum joint compound
5. Norgips reinforcing tape
6. Ready-made joint compound Norgips Extra Finish, ready-made joint compound Norgips Start & Finish, gypsum joint compound Norgips Finish

### Technical data

	Max height 3.0 m <sup>1)</sup>
---	-----------------------------------

	Drywall weight 16 kg/m <sup>2</sup>
---	--

1) The permissible height equals the thickness of one board. For higher structures, it is advisable to use wall claddings on top hat or CD 60 profiles.

## Standard

☆☆☆ SUPER

Ensures higher stability of the development. Increased moisture resistance.

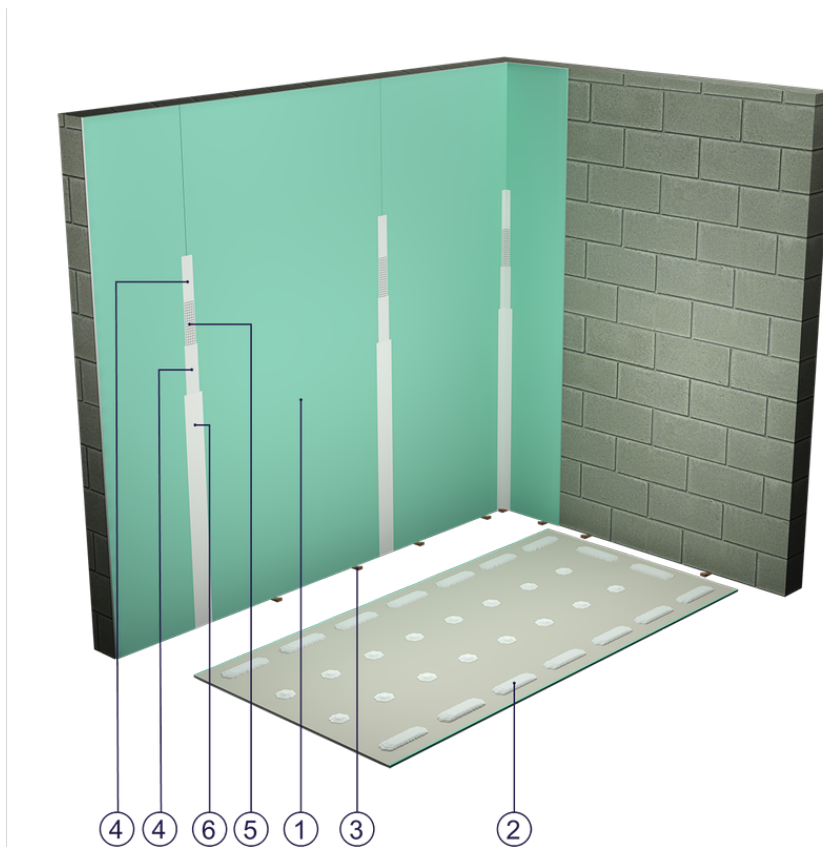


Fig. 1. Drywall view

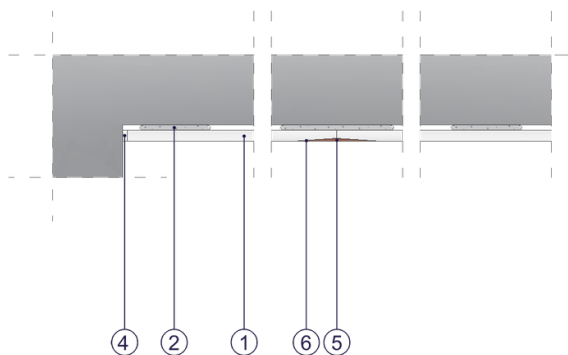


Fig. 2. Drywall horizontal section

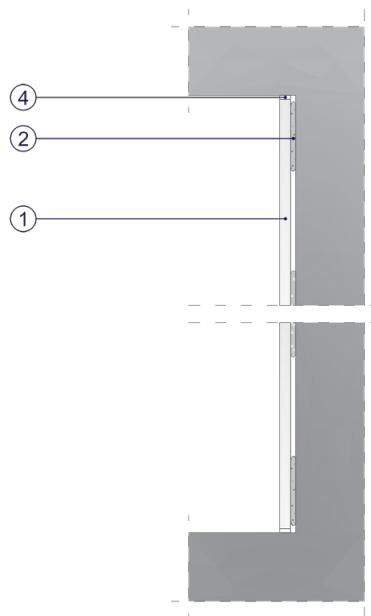


Fig. 3. Drywall vertical section