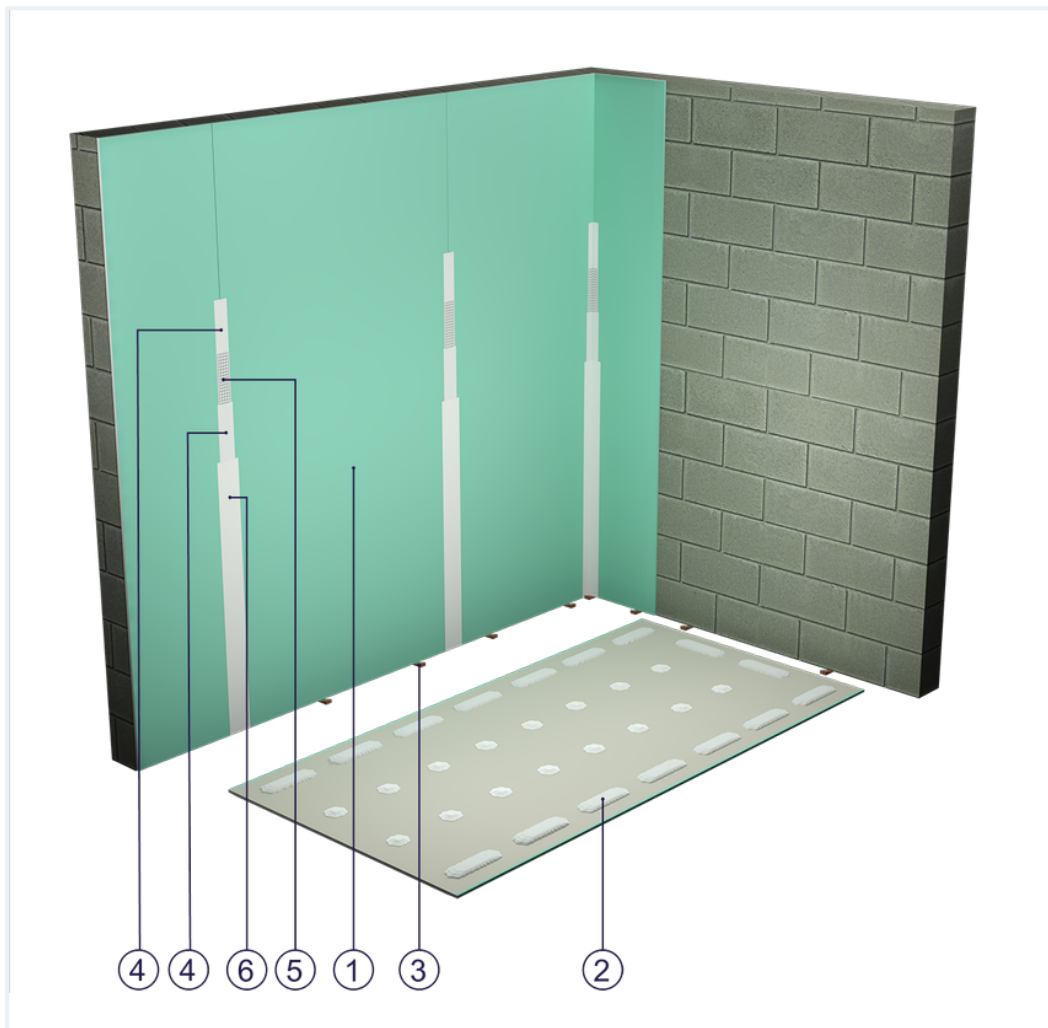


SYSTEM DATASHEET

Drywall lining ST - 1x12,5 GKBI H2

made of GKBI type H2 boards, thickness 12.5 mm fixed to a surface using a gypsum adhesive



Drywall elements

1. Norgips S GKBI type H2 gypsum plasterboard , thickness: 12.5 mm
2. Norgips Bonding Fix T gypsum adhesive
3. Plasterboard pads
4. Norgips Start & Finish ready-made joint compound or Norgips Start gypsum joint compound
5. Norgips reinforcing tape
6. Ready-made joint compound Norgips Extra Finish, ready-made joint compound Norgips Start & Finish, gypsum joint compound Norgips Finish

Technical data

	Max height 3.0 m ¹⁾
---	-----------------------------------

	Drywall weight 13 kg/m ²
---	--

1) The permissible height equals the thickness of one board. For higher structures, it is advisable to use wall claddings on top hat or CD 60 profiles.

Standard

☆☆☆ SUPER

Ensures higher stability of the development. Increased moisture resistance.

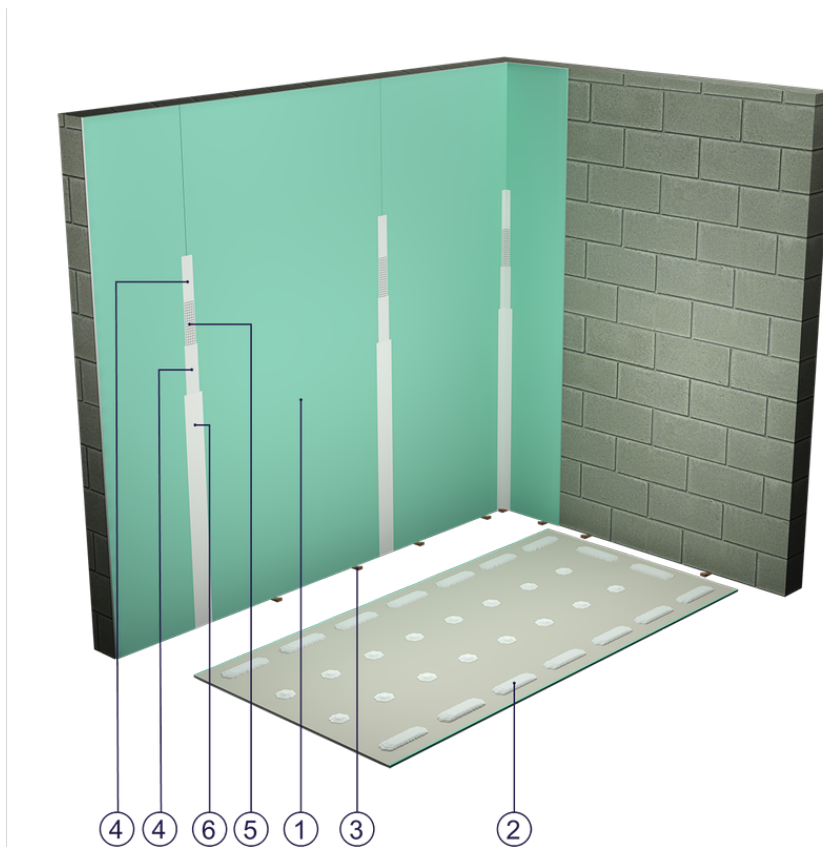


Fig. 1. Drywall view

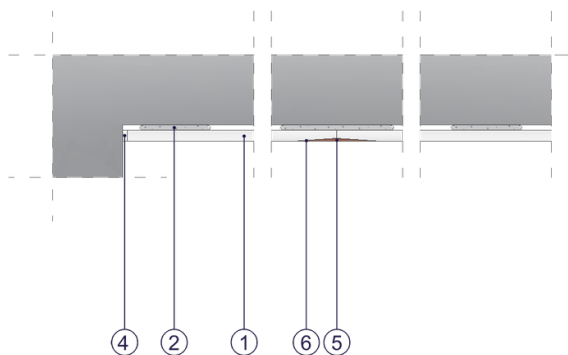


Fig. 2. Drywall horizontal section

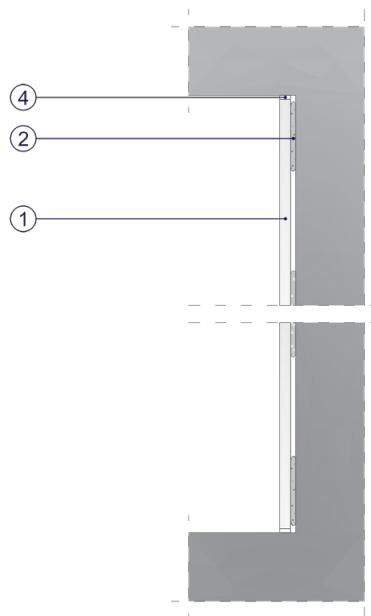


Fig. 3. Drywall vertical section