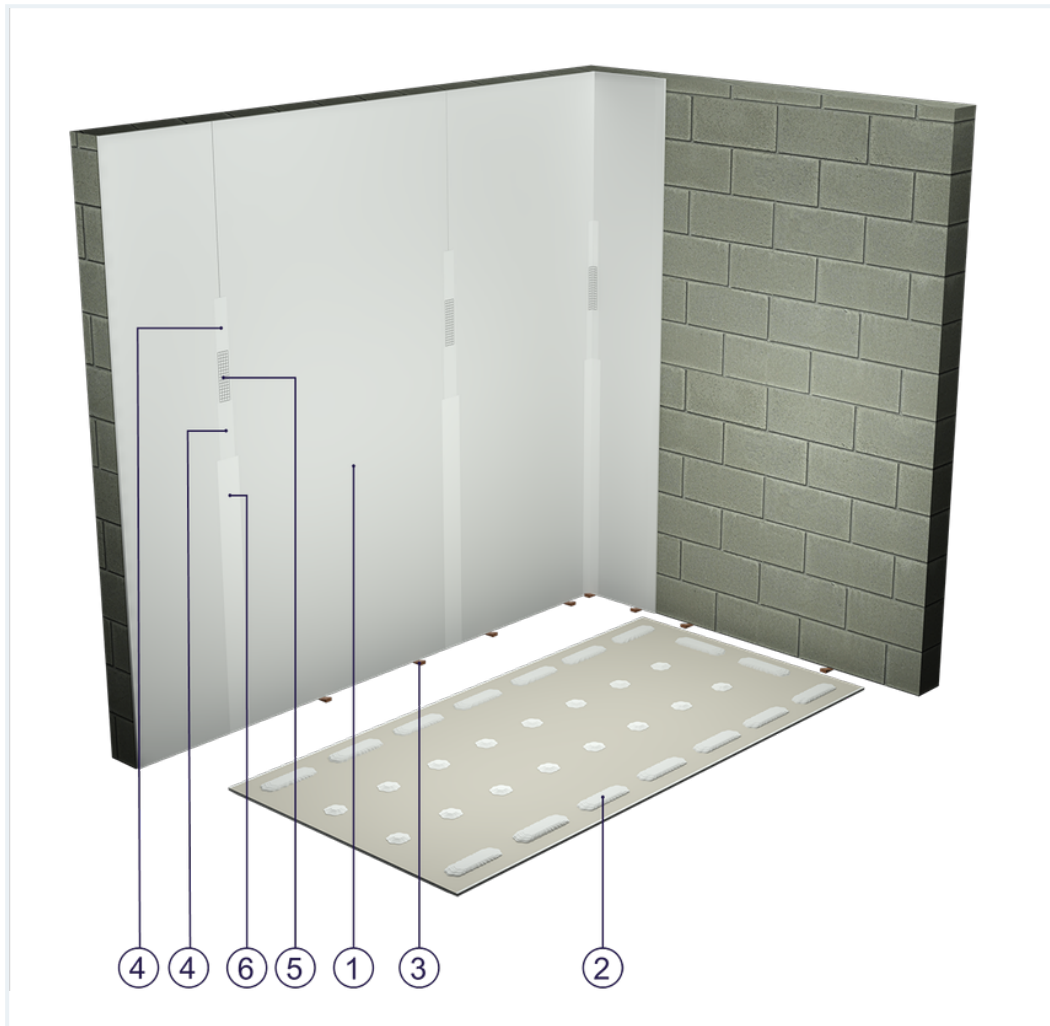


SYSTEM DATASHEET

Drywall lining ST - 1x9,5 GKB A

made of plasterboard type A, thickness 9.5 fixed to a surface using a gypsum adhesive



Drywall elements

1. Norgips S GKB type A plasterboards of 12.5 mm thickness 9.5 mm
2. Norgips Bonding Fix T gypsum adhesive
3. Plasterboard pads
4. Norgips Start & Finish ready-made joint compound or Norgips Start gypsum joint compound
5. Norgips reinforcing tape
6. Ready-made joint compound Norgips Extra Finish, ready-made joint compound Norgips Start & Finish, gypsum joint compound Norgips Finish

Technical data

	Max height 3.0 m ¹⁾
-------------------------------------------------------------------------------------	-----------------------------------

	Drywall weight 12 kg/m ²
-------------------------------------------------------------------------------------	----------------------------------------

1) The permissible height equals the thickness of one board. For higher structures, it is advisable to use wall claddings on top hat or CD 60 profiles.

Standard

★ BASIC

Provides lightweight stable construction with the smallest thickness.

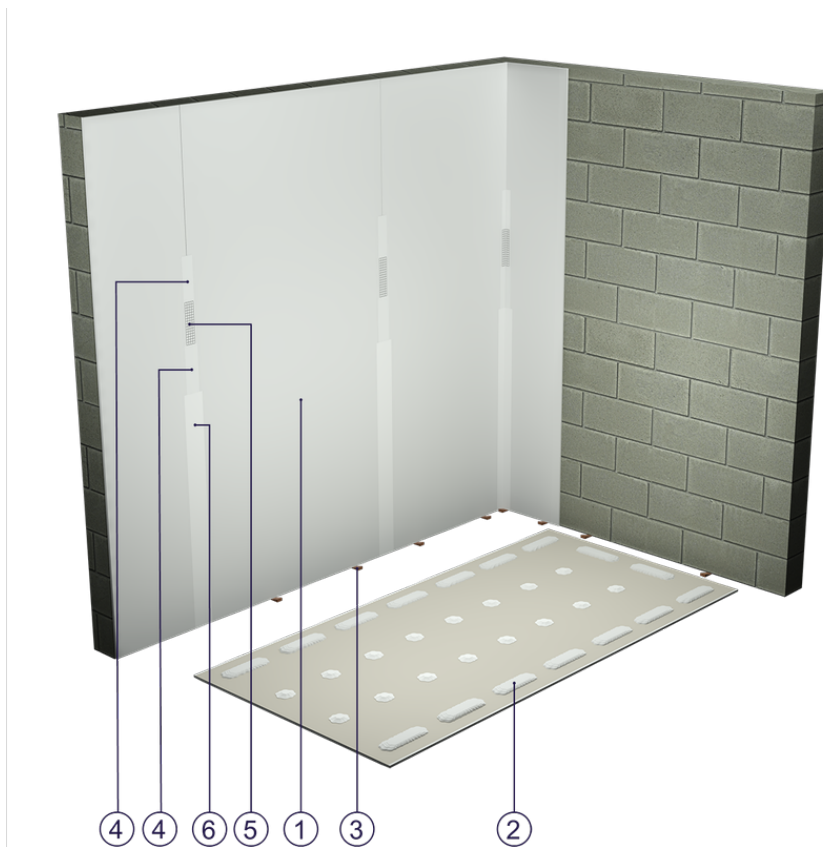


Fig. 1. Drywall view

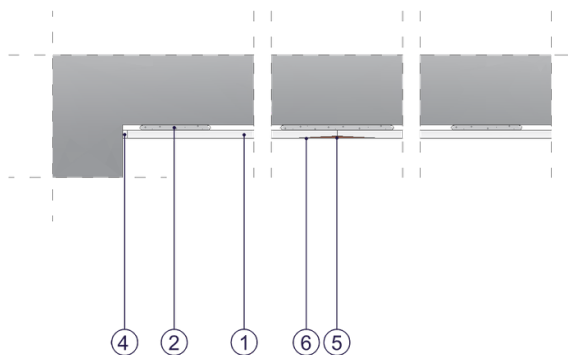


Fig. 2. Drywall horizontal section

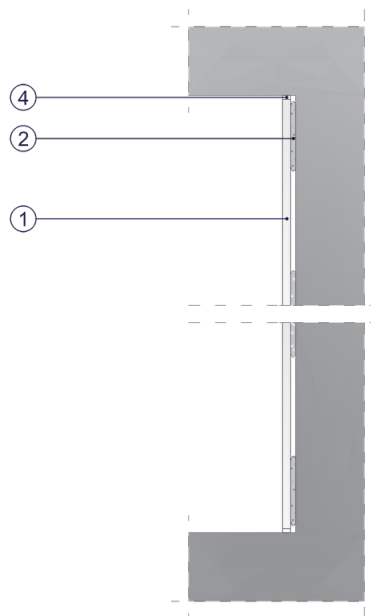


Fig. 3. Drywall vertical section