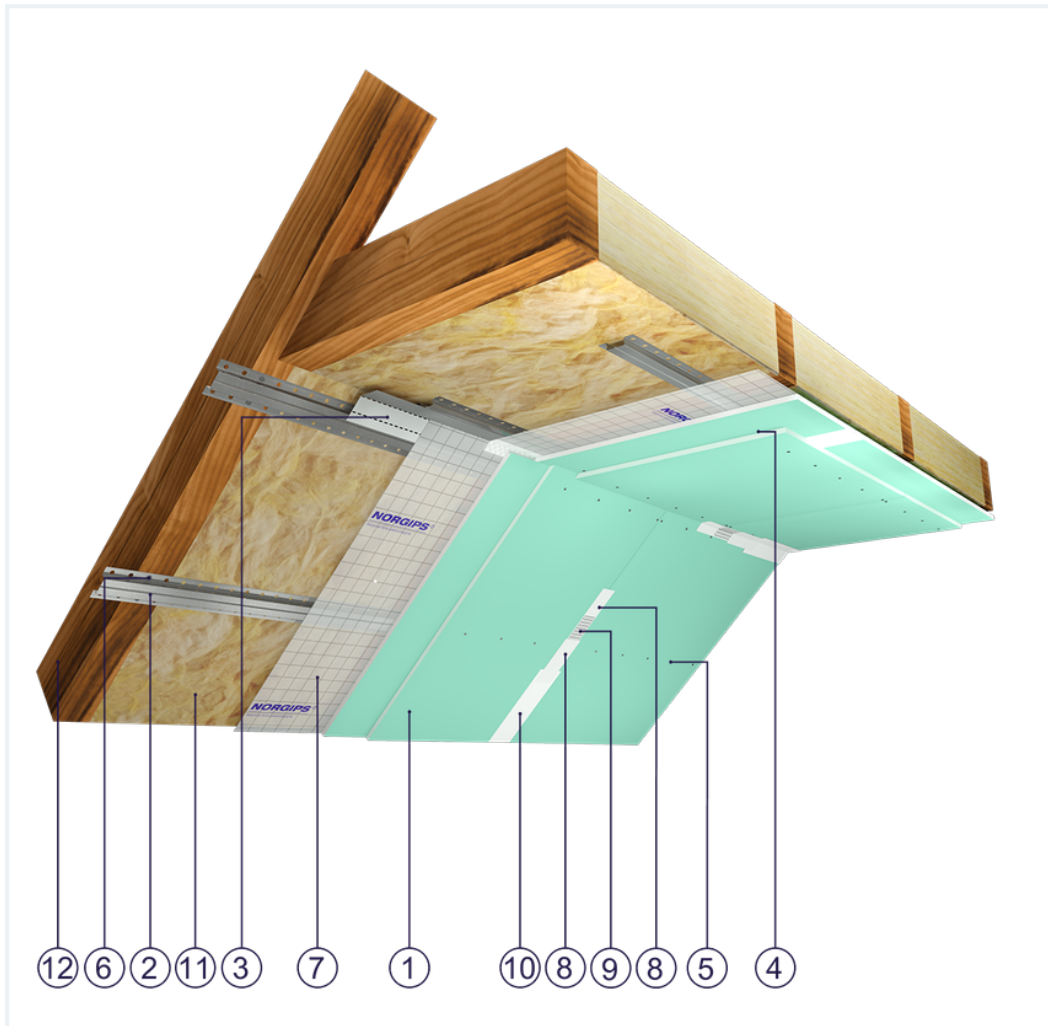


## SYSTEM DATASHEET

### Attic lining ZP - 2x12,5 GKFI DFH2/KAP, W

on a hat profile structure with double skinned GKFI type DFH2 boards, thickness 12.5 mm



### Attic lining elements

1. Norgips S GKFI type DFH2 gypsum plasterboard , thickness: 12.5 mm
2. Norgips top hat profiles, max. axial spacing every 40 cm
3. Norgips FLEX universal profile
4. Norgips 3.5 x 25 mm sheet metal screws, max. spacing every 40 cm
5. Norgips 3.5 x 35 mm sheet metal screws, max. spacing every 17 cm
6. Norgips 3.5 x 35 mm wood screws
7. Vapour barrier membrane
8. Norgips Start & Finish ready-made joint compound or Norgips Start gypsum joint compound
9. Norgips reinforcing tape
10. Ready-made joint compound Norgips Extra Finish, ready-made joint compound Norgips Start & Finish, gypsum joint compound Norgips Finish
11. Mineral wool
12. Roof rafters

## Technical data



Fire resistance class  
REI 30 <sup>1)</sup>



Lining weight  
22 kg/m<sup>2</sup> <sup>2)</sup>

The above-mentioned parameters apply to a partition made of sheet metal profiles with a thickness of 0.55 and 0.6 mm.

In the ZP system - 2x12.5 GKFI DFH2/KAP, the use of sheet metal profiles with a thickness of 0.5 mm is not allowed.

1) Based on classification no. LBO-047-KZ/20

2) The weight specified does not include the insulation material weight.

## Standard

☆☆☆ SUPER

It provides a very stable building with the highest fire resistance, sound insulation and hardness. Increased moisture resistance.

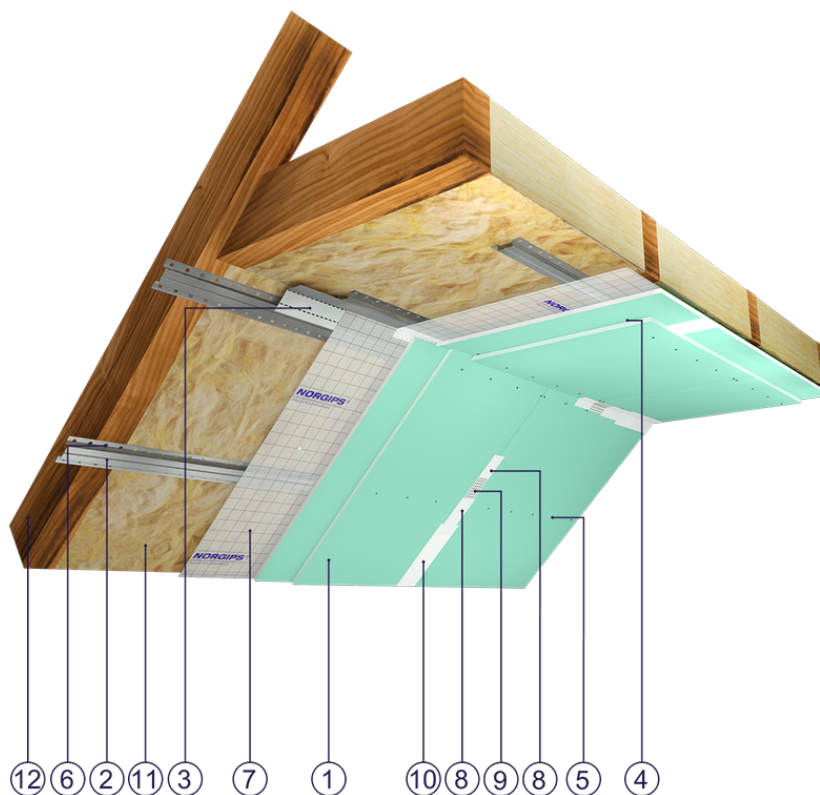


Fig. 1. Attic view

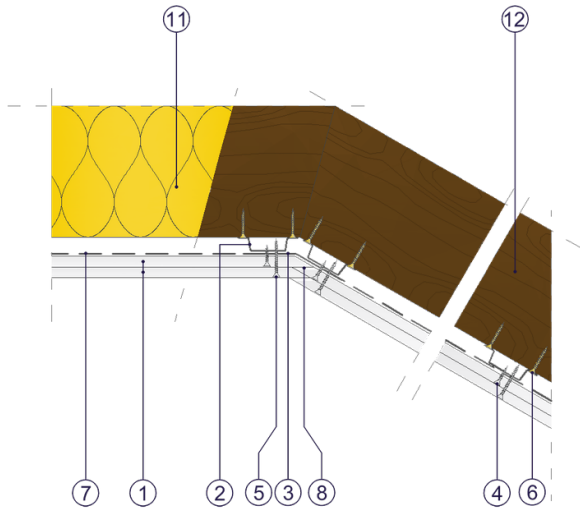


Fig. 2. Attic horizontal section

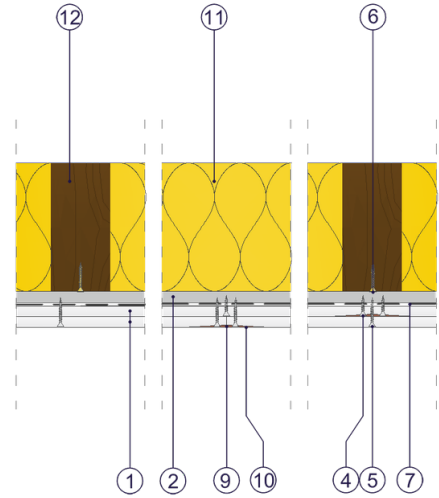


Fig. 3. Attic vertical section