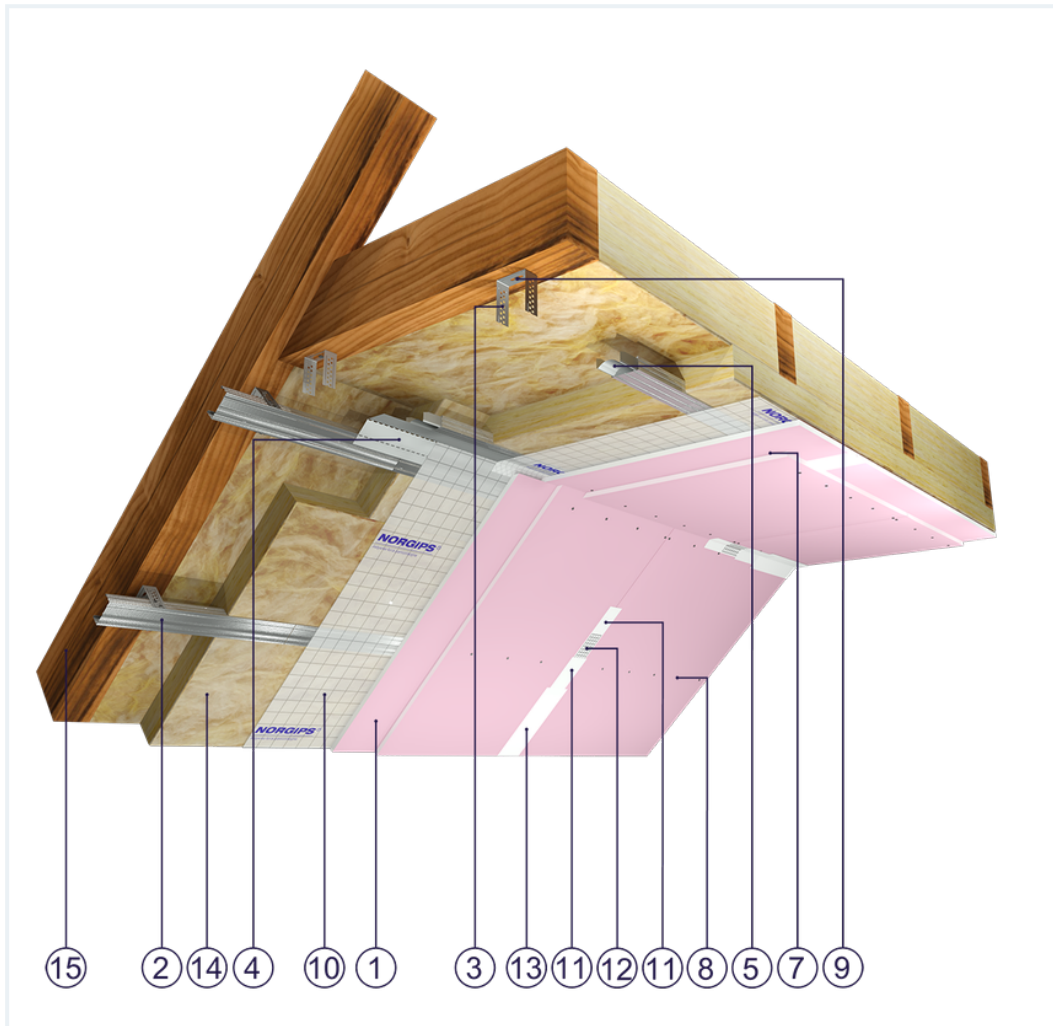


SYSTEM DATASHEET

Attic lining ZP - 2x15 GKF DF/CD 60, ES, W

on a structure made of CD 60 profiles and ES/ES Plus hangers, double sheathing with DF-type GKF boards, thickness: 15 mm



Attic lining elements

1. Norgips S GKF type DF gypsum plasterboard , thickness: 15 mm
2. Norgips CD 60 profiles, max. axial spacing every 40 cm**
3. Norgips ES/ES Plus hangers
4. Norgips FLEX universal profile
5. Norgips longitudinal connectors mounted with 4 3.5x9.5 mm sheet metal screws with a self-tapping tip
6. Norgips 3.5 x 25 mm sheet metal screws, max. spacing every 40 cm
7. Norgips 3.5 x 45 mm sheet metal screws, max. spacing every 17 cm
8. Norgips 3.5 x 9.5 mm sheet metal screws with a self-tapping tip
9. Norgips 3.5 x 35 mm wood screws
10. Vapour barrier membrane
11. Norgips Start & Finish ready-made joint compound or Norgips Start gypsum joint compound
12. Norgips reinforcing tape
13. Ready-made joint compound Norgips Extra Finish, ready-made joint compound Norgips Start & Finish, gypsum joint compound Norgips Finish
14. Mineral wool
15. Roof rafters

Technical data



Fire resistance class
REI 60 ¹⁾



Lining weight
30 kg/m² ²⁾

The above-mentioned parameters apply to a partition made of sheet metal profiles with a thickness of 0.55 and 0.6 mm.

In the system ZP - 2x15 GKF DF/CD 60. ES, W the use of sheet metal profiles with a thickness of 0.5 mm is not allowed.

1) Based on classification no. LBO-066-KZ/25E

2) The weight specified does not include the insulation material weight.

Standard

☆☆☆ SUPER

It provides a very stable building with the highest fire resistance, sound insulation and hardness.



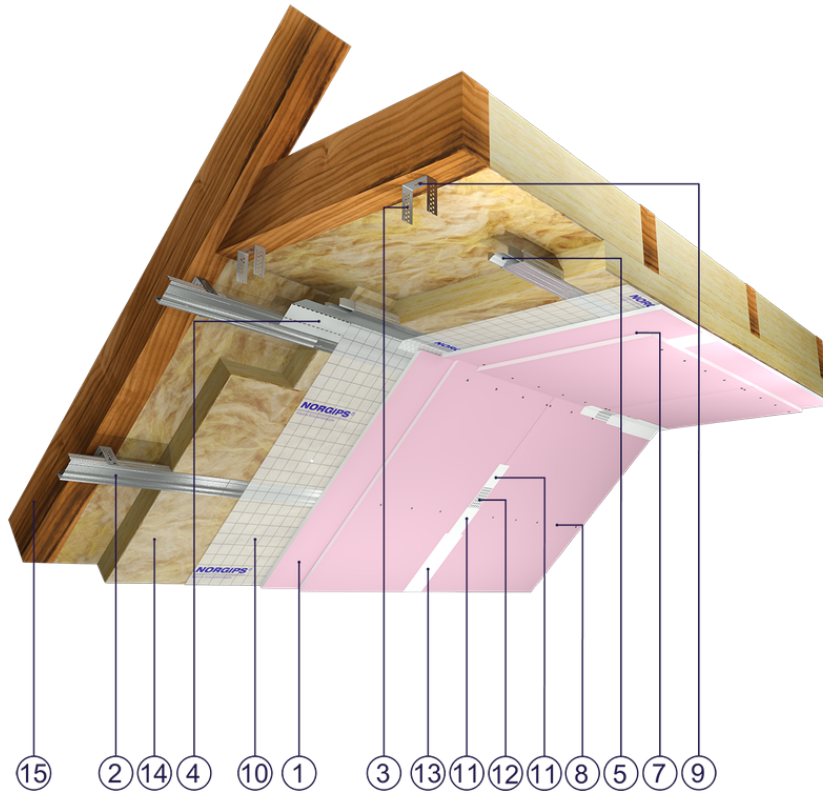


Fig. 1. Attic view

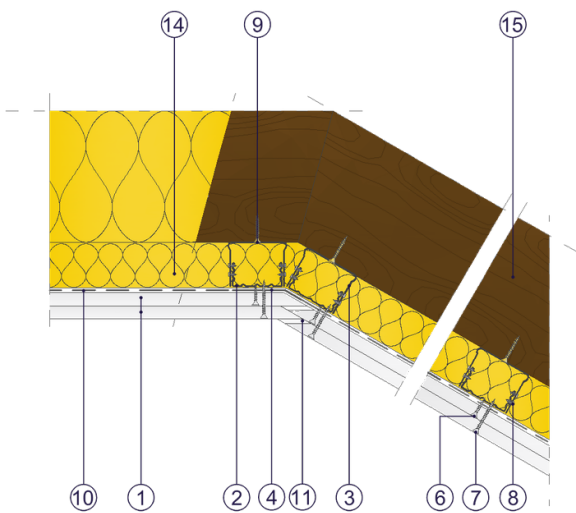


Fig. 2. Attic horizontal section

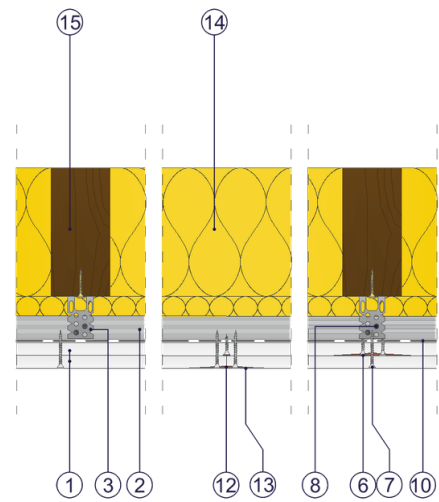


Fig. 3. Attic vertical section