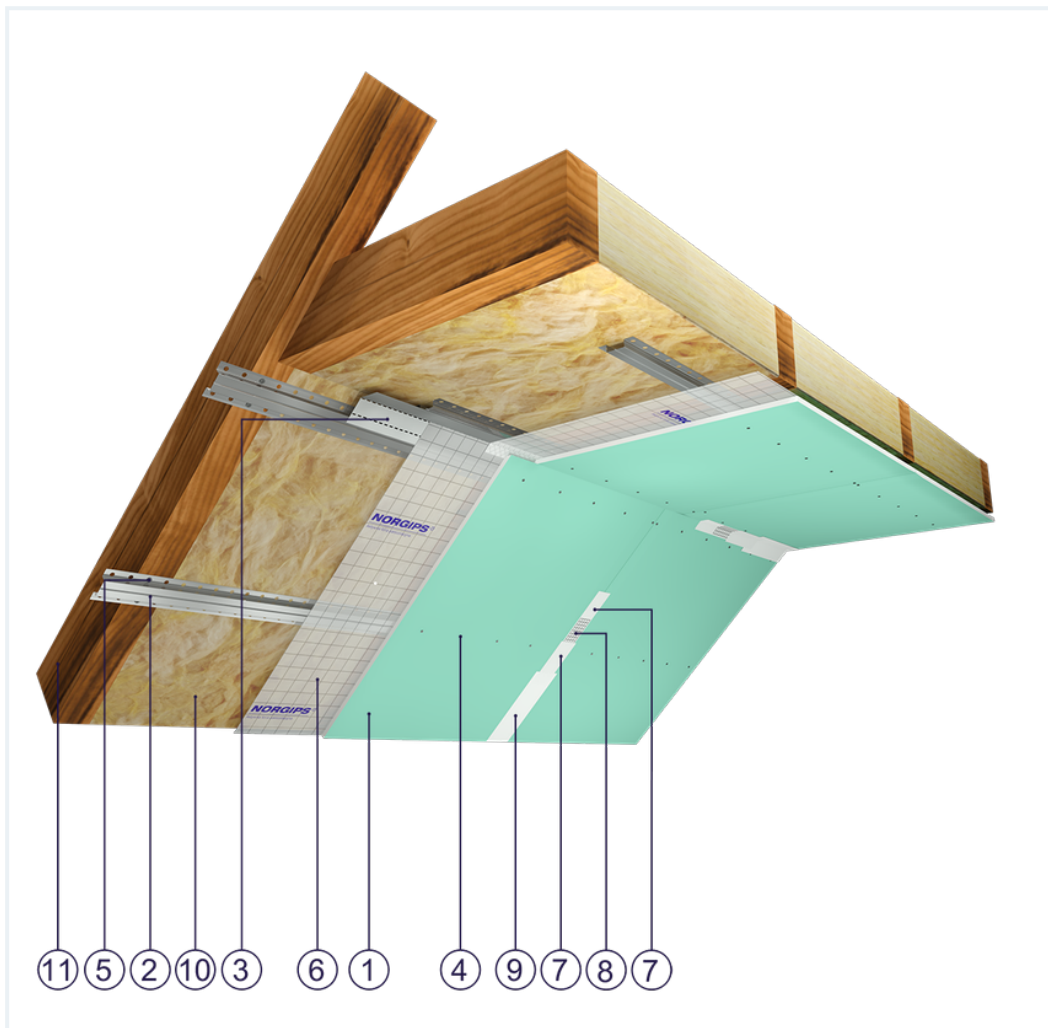


## SYSTEM DATASHEET

### Attic lining ZP - 1x15 GKFI DFH2/KAP, W

on a hat profile structure with single plasterboard sheathing of DFH2 type GKFI boards, thickness: 15 mm



### Attic lining elements

1. Norgips S GKFI type DFH2 gypsum plasterboard , thickness: 15 mm
2. Norgips top hat profiles, max. axial spacing every 40 cm
3. Norgips FLEX universal profile
4. Norgips 3.5 x 25 mm sheet metal screws, max. spacing every 17 cm
5. Norgips 3.5 x 35 mm wood screws
6. Vapour barrier membrane
7. Norgips Start & Finish ready-made joint compound or Norgips Start gypsum joint compound
8. Norgips reinforcing tape
9. Ready-made joint compound Norgips Extra Finish, ready-made joint compound Norgips Start & Finish, gypsum joint compound Norgips Finish
10. Mineral wool
11. Roof rafters

## Technical data



Fire resistance class  
REI 30 <sup>1)</sup>



Lining weight  
16 kg/m<sup>2</sup> <sup>2)</sup>

The above-mentioned parameters apply to a partition made of sheet metal profiles with a thickness of 0.55 and 0.6 mm.

In the system ZP - 1x15 GKFI DFH2/KAP, the use of sheet metal profiles with a thickness of 0.5 mm is not allowed.

1) Based on classification no. LBO-065-KZ/25E

2) The weight specified does not include the insulation material weight.

## Standard

### ★ BASIC

Provides a lightweight stable building with basic fire resistance. A robust and cost-effective solution.

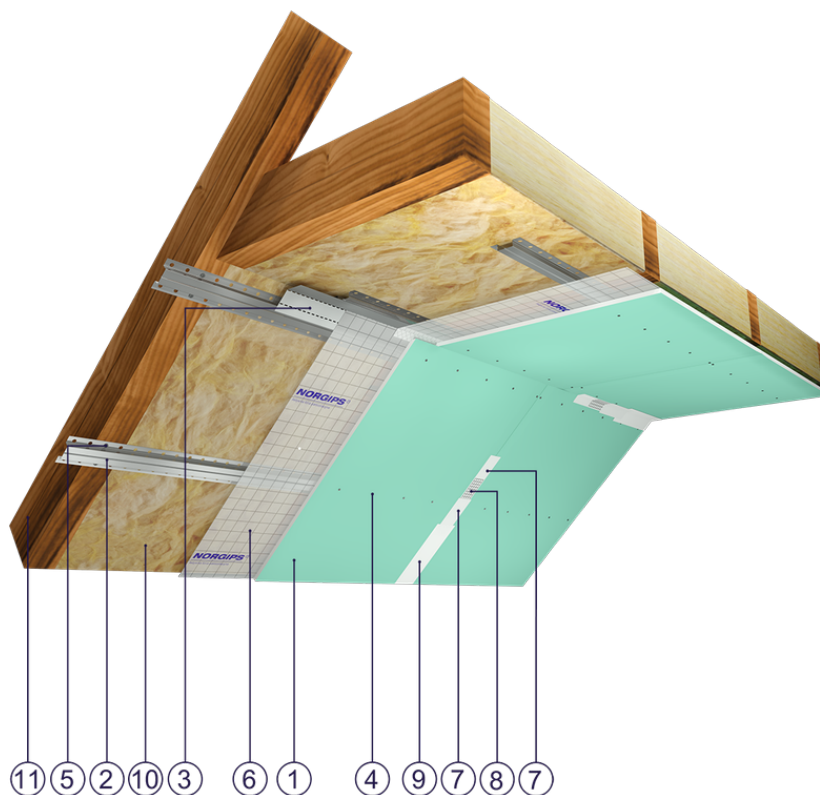


Fig. 1. Attic view

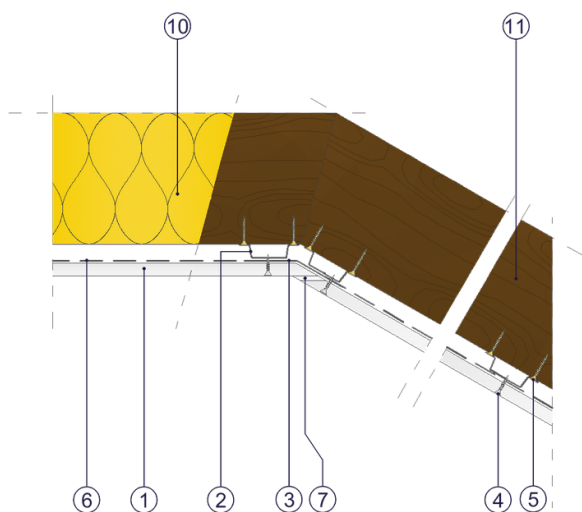


Fig. 2. Attic horizontal section

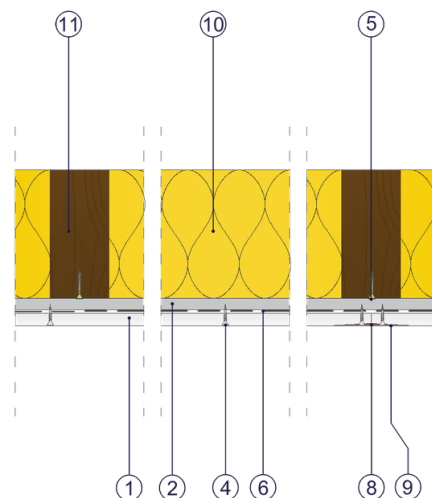


Fig. 3. Attic vertical section