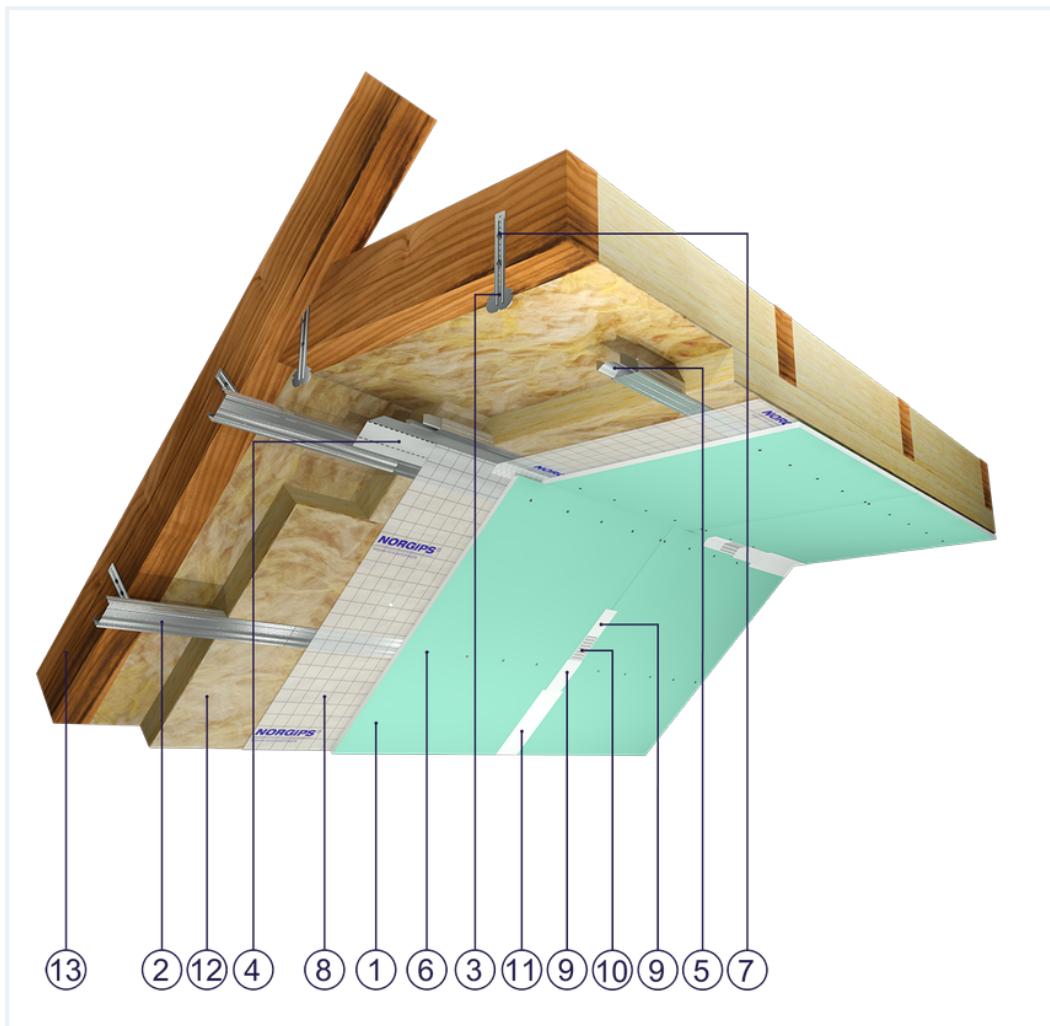


## SYSTEM DATASHEET

### Attic lining ZP - 1x12,5 GKBI H2/CD 60, L, W

on a structure made of CD 60 profiles and flat hangers with single sheathing with GKBI type H2 plasterboard, thickness: 12.5 mm



## Attic lining elements

1. Norgips S GKBI type H2 gypsum plasterboard , thickness: 12.5 mm
2. Norgips CD 60 profiles, max. axial spacing every 50 cm\*\*
3. Norgips flat hangers
4. Norgips FLEX universal profile
5. Norgips longitudinal connectors mounted with 4 3.5x9.5 mm sheet metal screws with a self-tapping tip
6. Norgips 3.5 x 25 mm sheet metal screws, max. spacing every 17 cm
7. Norgips 3.5 x 35 mm wood screws
8. Vapour barrier membrane
9. Norgips Start & Finish ready-made joint compound or Norgips Start gypsum joint compound
10. Norgips reinforcing tape
11. Ready-made joint compound Norgips Extra Finish, ready-made joint compound Norgips Start & Finish, gypsum joint compound Norgips Finish
12. Mineral wool
13. Roof rafters

## Technical data

	Lining weight 10 kg/m <sup>2</sup> <sup>1)</sup>
---	---

The above-mentioned parameters apply to a partition made of sheet metal profiles with a thickness of 0.55 and 0.6 mm.

**1)** The weight specified does not include the insulation material weight.

## Standard

### ★ BASIC

Provides a lightweight stable building with basic fire resistance. A robust and cost-effective solution.



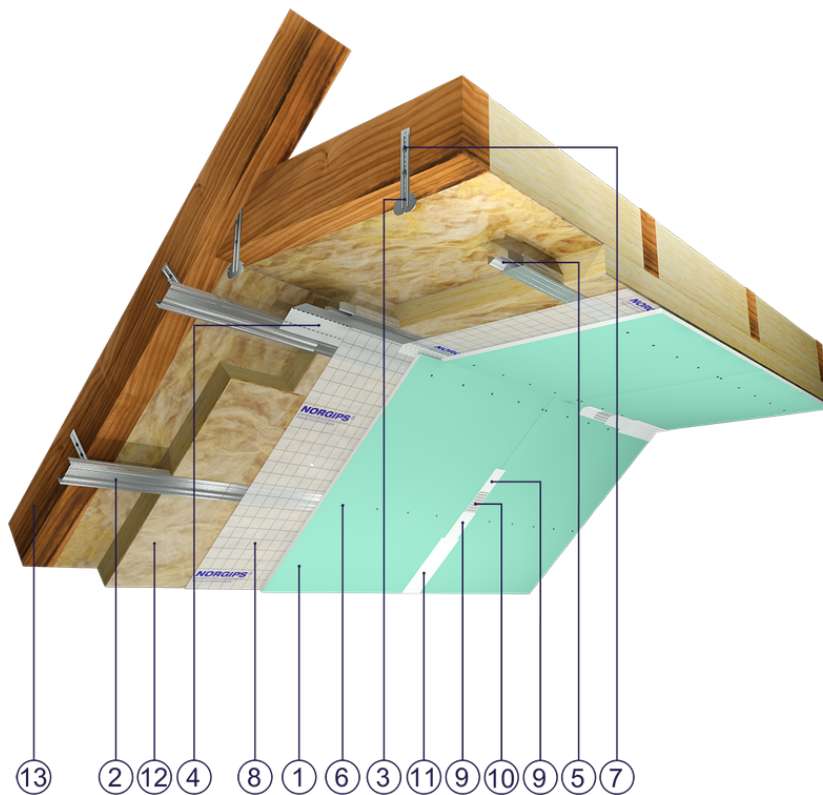


Fig. 1. Attic view

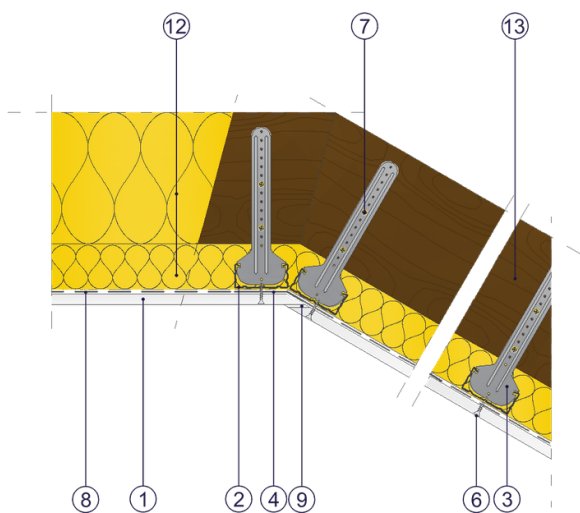


Fig. 2. Attic horizontal section

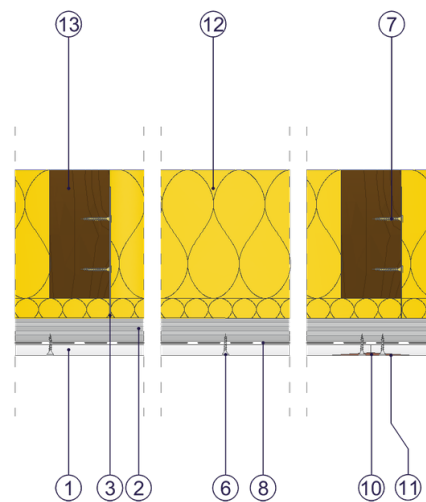


Fig. 3. Attic vertical section