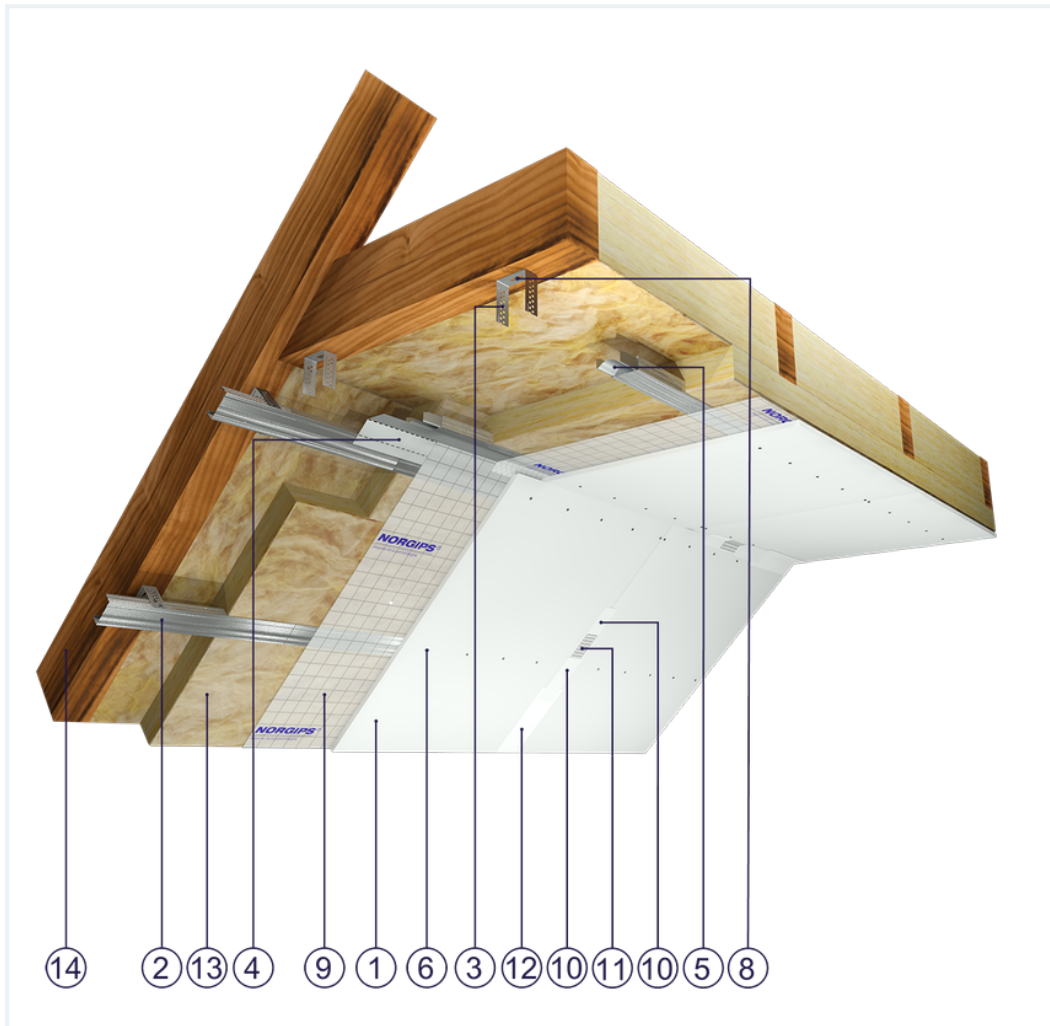


SYSTEM DATASHEET

Attic lining ZP - 1x12,5 GKB A/CD 60, ES, W

on a structure of CD 60 profiles and ES/ES Plus hangers with single plasterboard sheathing of A-Type. 12.5 mm



Attic lining elements

1. Norgips S GKB type A plasterboards of 12.5 mm thickness 12.5 mm
2. Norgips CD 60 profiles, max. axial spacing every 50 cm**
3. Norgips ES/ES Plus hangers
4. Norgips FLEX universal profile
5. Norgips longitudinal connectors mounted with 4 3.5x9.5 mm sheet metal screws with a self-tapping tip
6. Norgips 3.5 x 25 mm sheet metal screws, max. spacing every 17 cm
7. Norgips 3.5 x 9.5 mm sheet metal screws with a self-tapping tip
8. Norgips 3.5 x 35 mm wood screws
9. Vapour barrier membrane
10. Norgips Start & Finish ready-made joint compound or Norgips Start gypsum joint compound
11. Norgips reinforcing tape
12. Ready-made joint compound Norgips Extra Finish, ready-made joint compound Norgips Start & Finish, gypsum joint compound Norgips Finish
13. Mineral wool
14. Roof rafters

Technical data

	Lining weight 9 kg/m ² ¹⁾
-----------------------------------------------------------------------------------	----------------------------------------------------

The above-mentioned parameters apply to a partition made of sheet metal profiles with a thickness of 0.55 and 0.6 mm.

1) The weight specified does not include the insulation material weight.

Standard

★ BASIC

Provides a lightweight stable building with basic fire resistance. A robust and cost-effective solution.



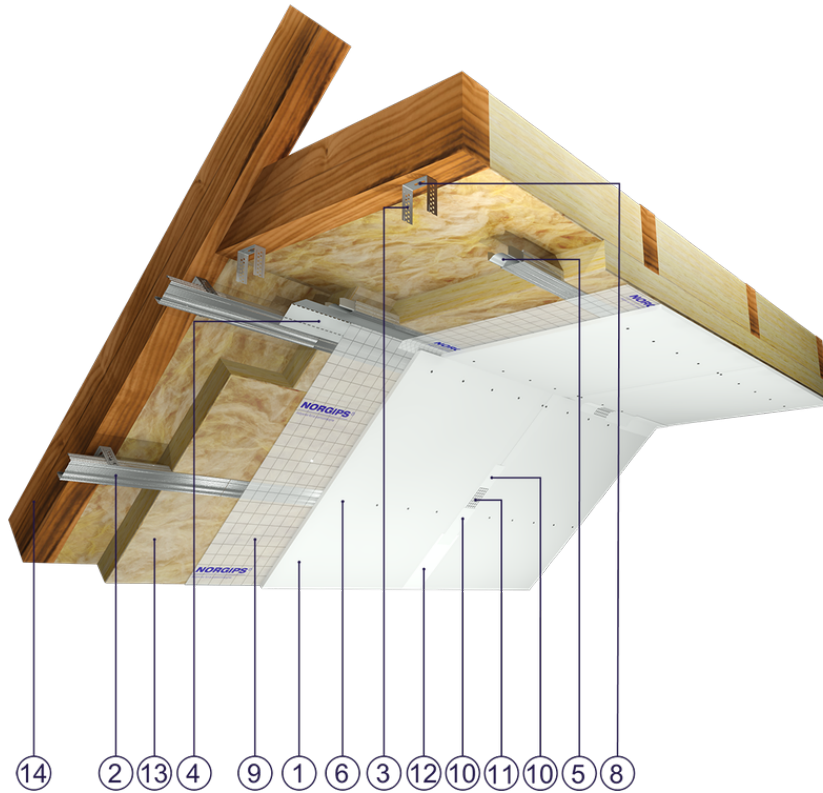


Fig. 1. Attic view

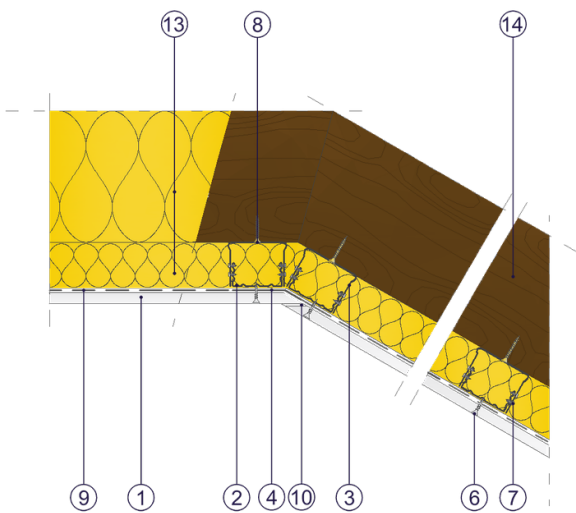


Fig. 2. Attic horizontal section

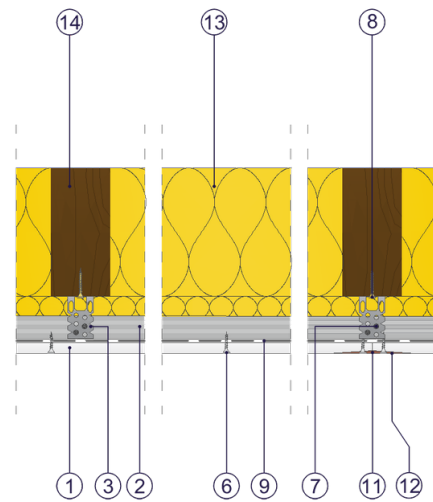


Fig. 3. Attic vertical section