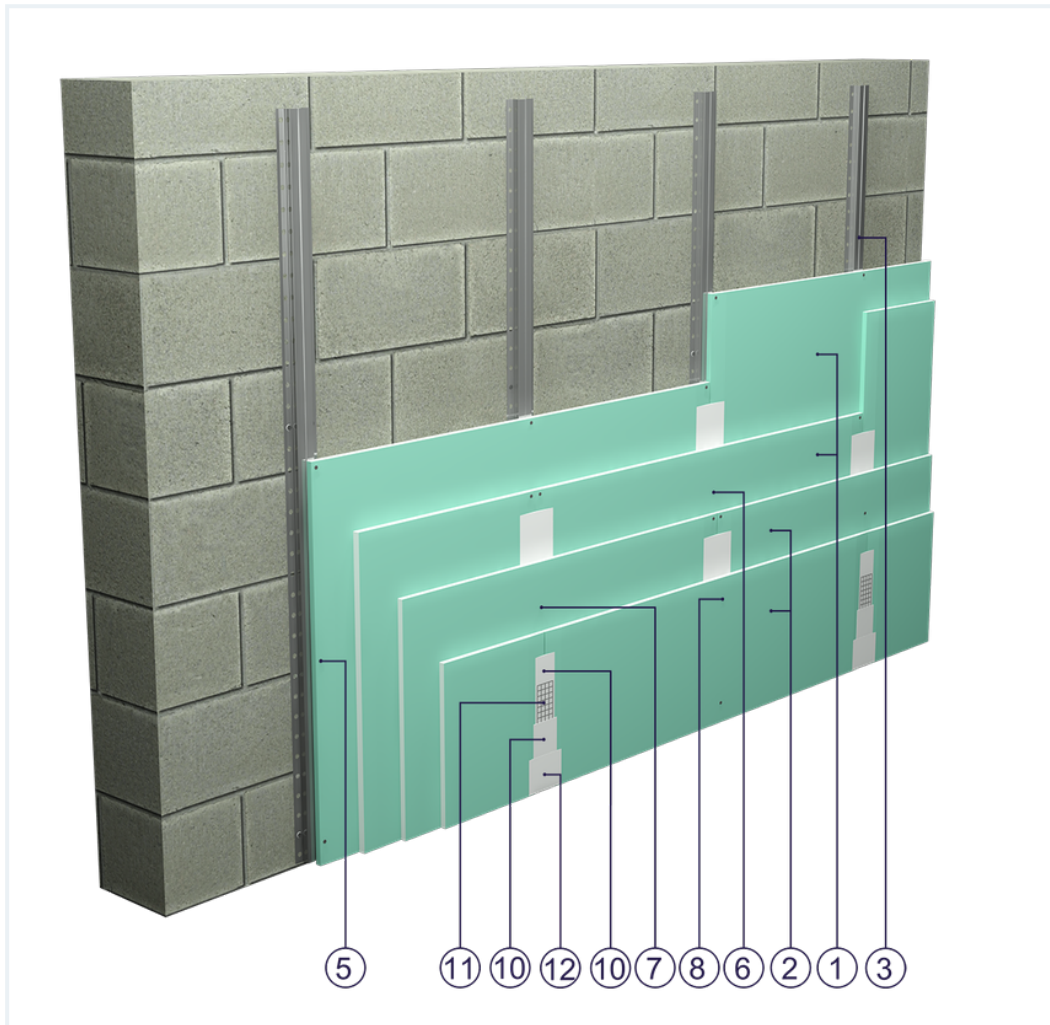


SYSTEM DATASHEET

Wall cladding OS - 2x15+2x12,5 GKFI DFH2/KAP





on a hat profile structure with four-layer sheathing with DFH2-type GKFI boards , thickness: 2 x 15 + 2 x 12.5 mm without mineral wool filling



Wall cladding elements

1. Norgips S GKFI type DFH2 gypsum plasterboard , thickness: 15 mm
2. Norgips S GKFI type DFH2 gypsum plasterboard , thickness: 12.5 mm
3. Norgips top hat profiles, max. axial spacing every 60 cm ¹⁾¹⁾¹⁾¹⁾¹⁾¹⁾¹⁾¹⁾
4. Optional Norgips sealing tape, width 75 mm
5. Norgips 3.5 x 25 mm sheet metal screws, max. spacing every 75 cm
6. Norgips 3.5 x 45 mm sheet metal screws, max. spacing every 75 cm
7. Norgips 3.5 x 55 mm sheet metal screws, max. spacing every 75 cm
8. Norgips 4.2 x 70 mm sheet metal screws, max. spacing every 25 cm
9. Steel dowels, min. Ø 6 x 40 mm in two rows every 100 cm
10. Norgips Start & Finish ready-made joint compound or Norgips Start gypsum joint compound
11. Norgips reinforcing tape
12. Ready-made joint compound Norgips Extra Finish, ready-made joint compound Norgips Start & Finish, gypsum joint compound Norgips Finish

Technical data

 Fire resistance class EI 120 ²⁾	 Max height 12.0 m
 Wall mass 50 kg/m ²	 Cladding mass 49 kg/m ²

The above-mentioned parameters apply to a partition made of sheet metal profiles with a thickness of 0.55 and 0.6 mm.

- 1) If profiles are used in the horizontal orientation, their maximum profile axial spacing must be decreased to 500 mm. Moreover, the material consumption must be corrected using the calculator.
- 2) Based on classification no. LBO-070-KZ/20

Standard

☆☆☆ SUPER

It provides a very stable building with the highest fire resistance, sound insulation and hardness. Increased moisture resistance.



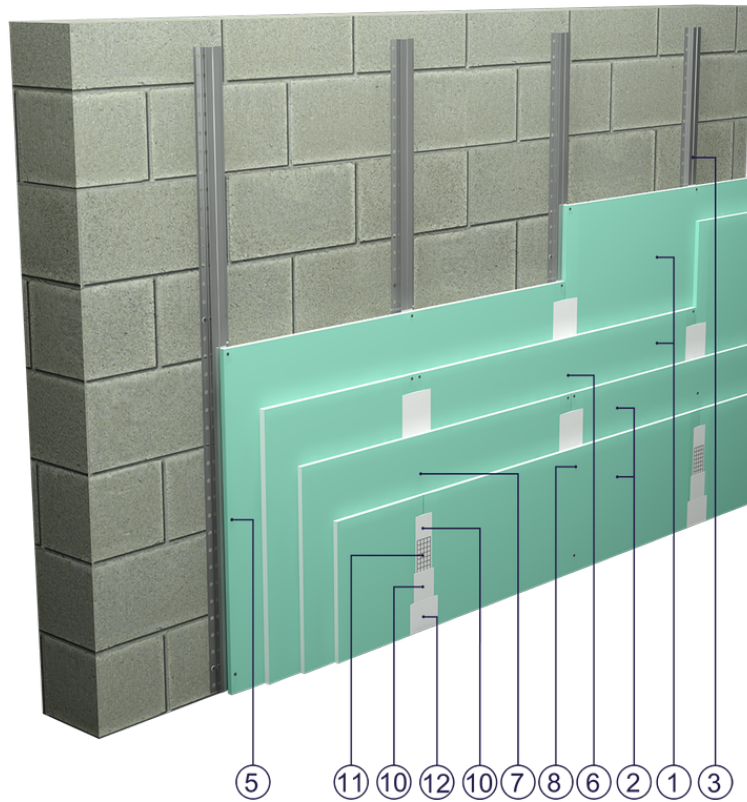


Fig. 1. Wall cladding view

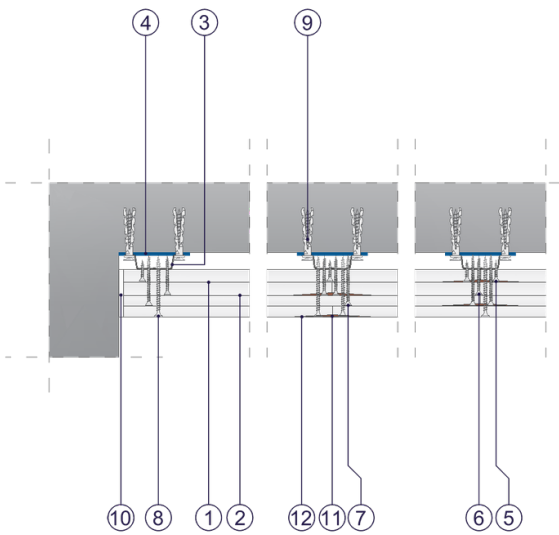


Fig. 2. Wall cladding horizontal section

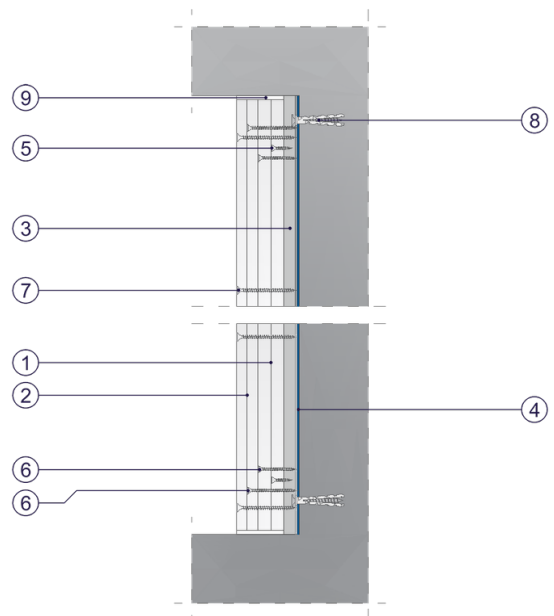


Fig. 3. Wall cladding vertical section