





Technical data

 Fire resistance class EI 60 ²⁾	 Max height 12.0 m
 Wall mass 29 kg/m ²	 Cladding mass 28 kg/m ²

The above-mentioned parameters apply to a partition made of sheet metal profiles with a thickness of 0.55 and 0.6 mm.

- 1) If profiles are used in the horizontal orientation, their maximum profile axial spacing must be decreased to 500 mm. Moreover, the material consumption must be corrected using the calculator.
- 2) Based on classification no. LBO-070-KZ/20

Standard

☆☆☆ SUPER

It provides a very stable building with the highest fire resistance, sound insulation and hardness.

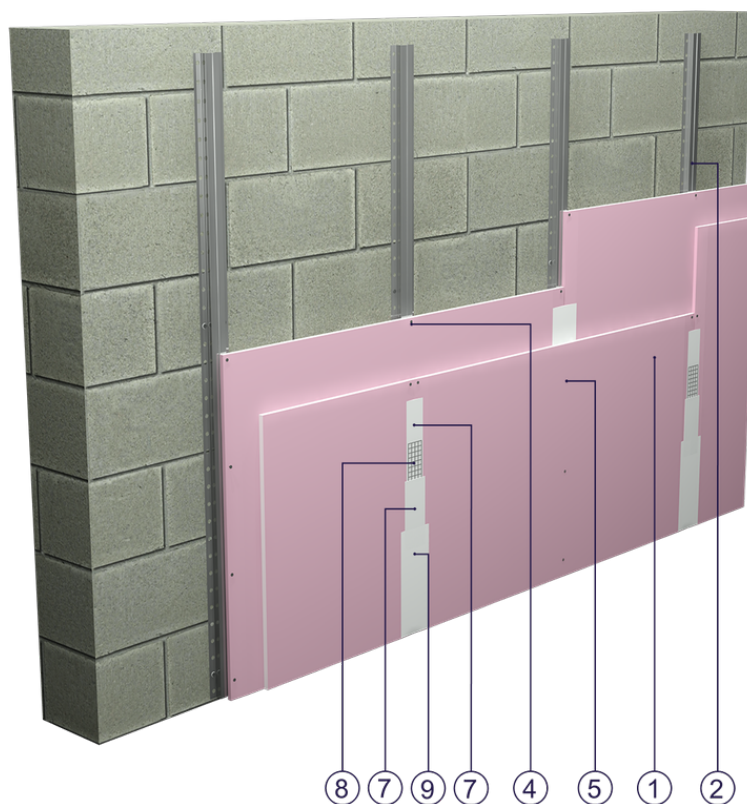


Fig. 1. Wall cladding view

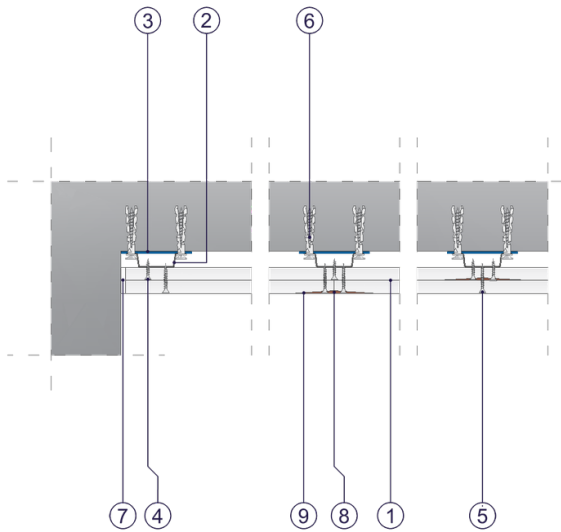


Fig. 2. Wall cladding horizontal section

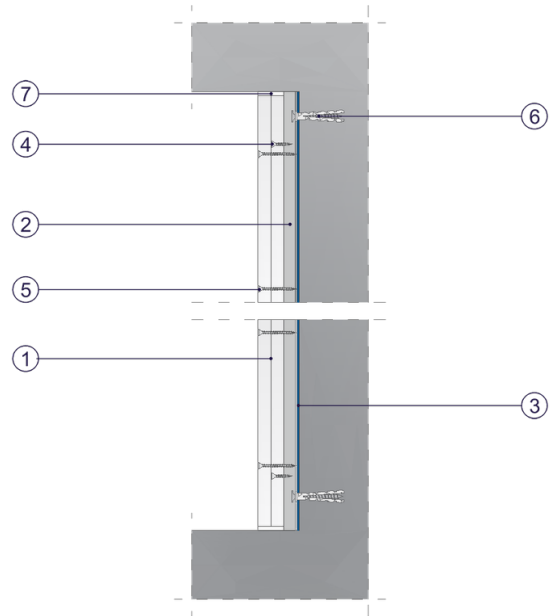


Fig. 3. Wall cladding vertical section