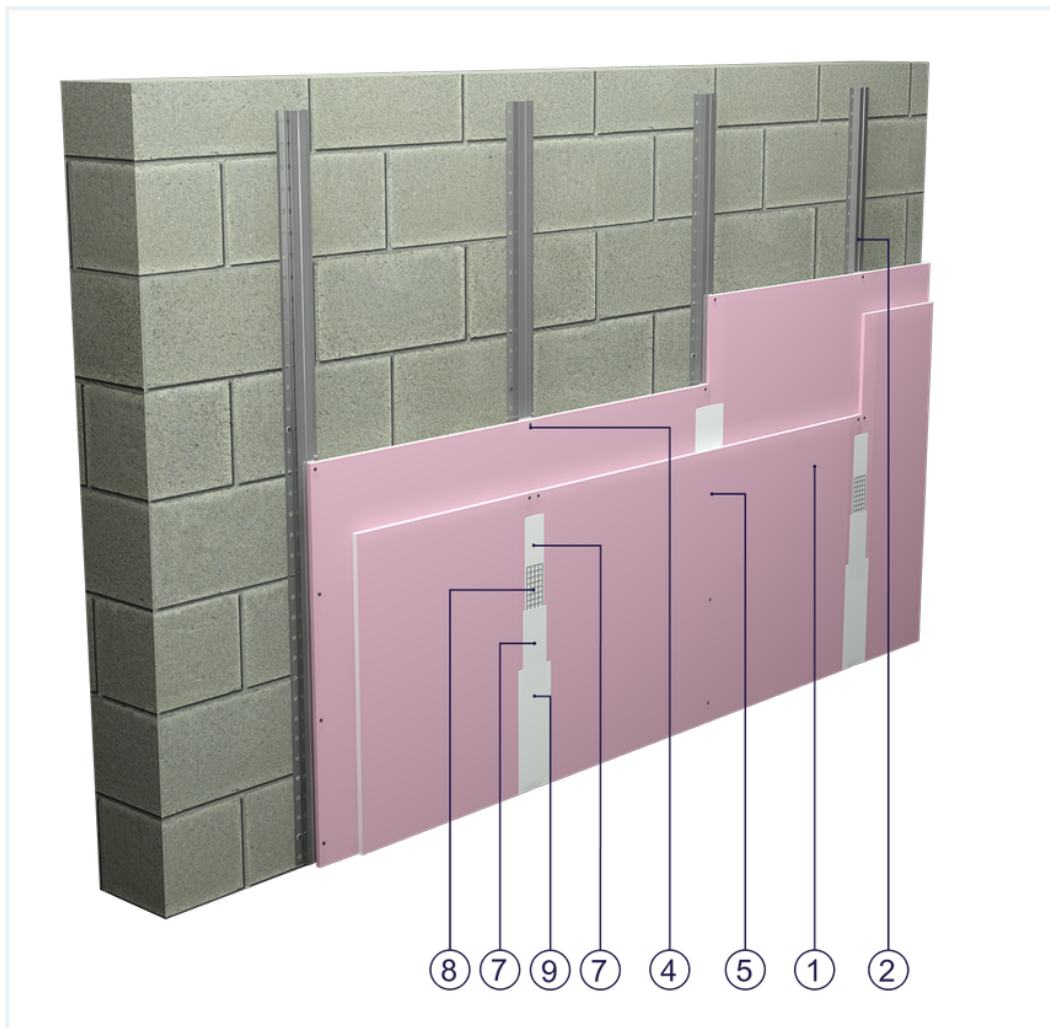


## SYSTEM DATASHEET

### Wall cladding OS - 2x12,5 GKF DF/KAP


on a hat profile structure with double skin of DF type GKF boards with a thickness of 12.5 mm without mineral wool filling



### Wall cladding elements

1. Norgips S GKF type DF gypsum plasterboard , thickness: 12.5 mm
2. Norgips top hat profiles, max. axial spacing every 60 cm <sup>1)1)1)1)1)1)1)1)</sup>
3. Optional Norgips sealing tape, width 75 mm
4. Norgips 3.5 x 25 mm sheet metal screws, max. spacing every 75 cm
5. Norgips 3.5 x 35 mm sheet metal screws, max. spacing every 25 cm
6. Steel dowels, min. Ø 6 x 40 mm in two rows every 100 cm
7. Norgips Start & Finish ready-made joint compound or Norgips Start gypsum joint compound
8. Norgips reinforcing tape
9. Ready-made joint compound Norgips Extra Finish, ready-made joint compound Norgips Start & Finish, gypsum joint compound Norgips Finish

## Technical data

	Fire resistance class EI 30 <sup>2)</sup>
---	--

	Max height 12.0 m
---	----------------------

	Wall mass 22 kg/m <sup>2</sup>
---	-----------------------------------

	Cladding mass 23 kg/m <sup>2</sup>
---	---------------------------------------

The above-mentioned parameters apply to a partition made of sheet metal profiles with a thickness of 0.55 and 0.6 mm.

- 1) If profiles are used in the horizontal orientation, their maximum profile axial spacing must be decreased to 500 mm. Moreover, the material consumption must be corrected using the calculator.
- 2) Based on classification no. LBO-070-KZ/20

## Standard

☆☆☆ SUPER

It provides a very stable building with the highest fire resistance, sound insulation and hardness.

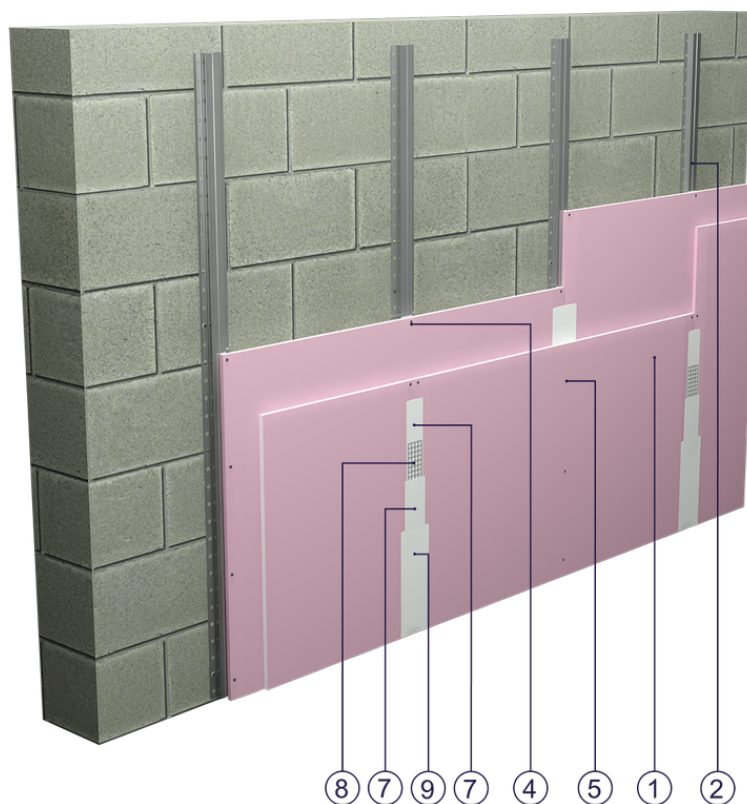


Fig. 1. Wall cladding view

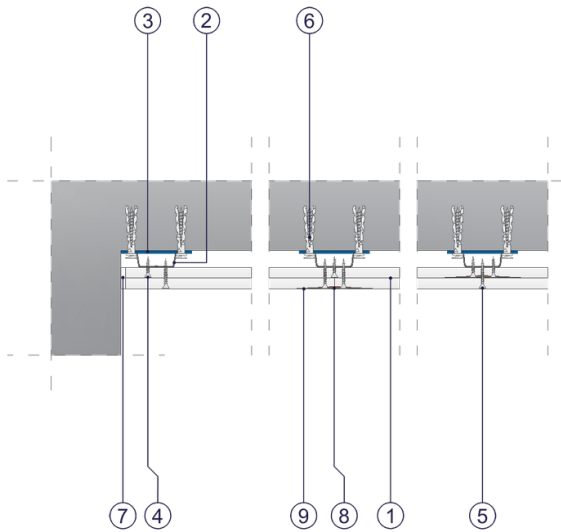


Fig. 2. Wall cladding horizontal section

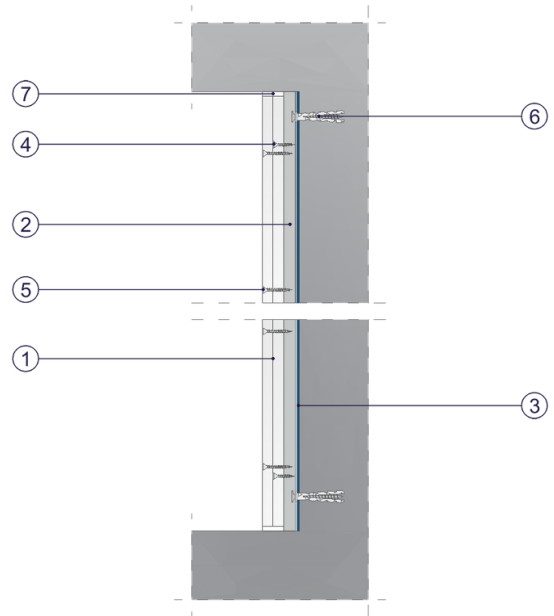


Fig. 3. Wall cladding vertical section