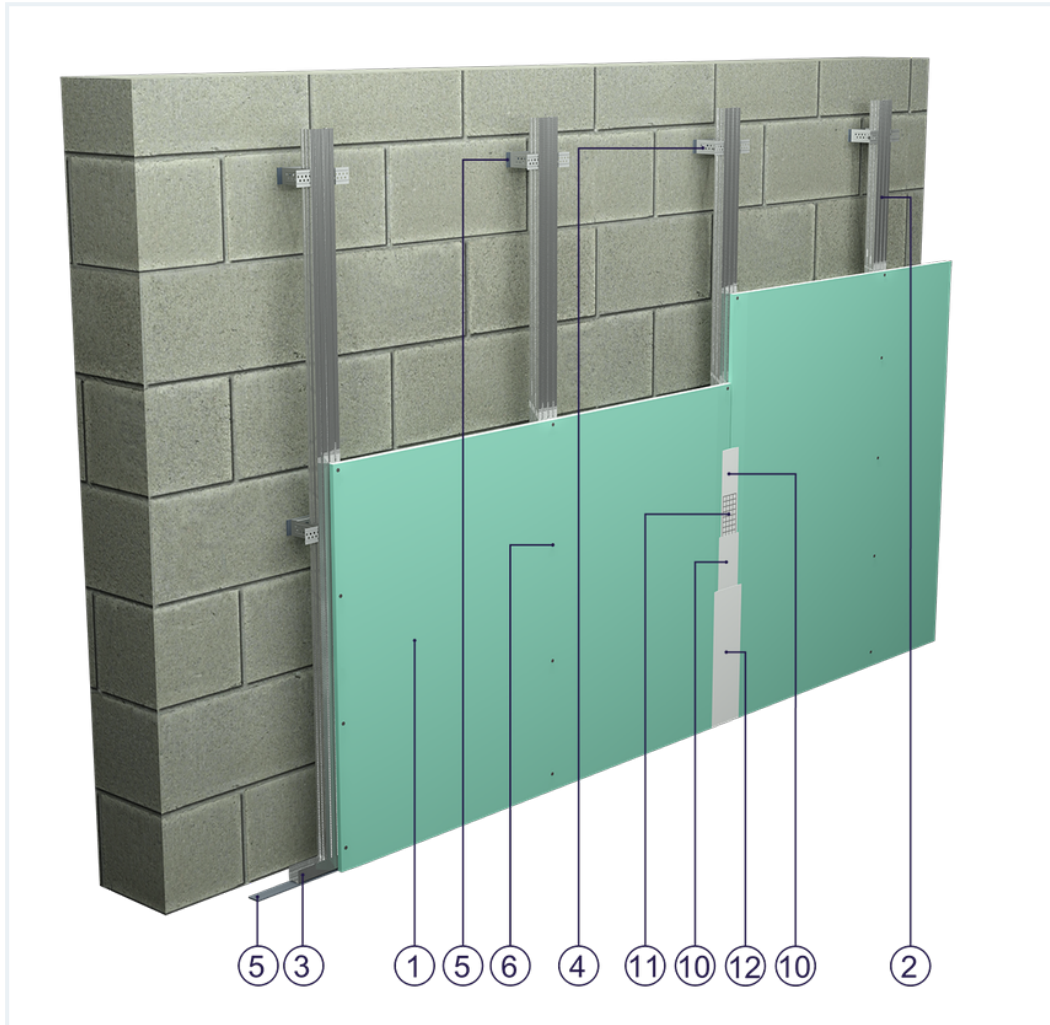


## SYSTEM DATASHEET

### Wall cladding OS - 1x12,5 GKBI H2/CD 60 (W)





on a structure of CD 60 profiles with single cladding of GKBI type H2 boards with a thickness of 12.5 mm, with optional mineral wool filling



## Wall cladding elements

1. Norgips S GKBI type H2 gypsum plasterboard , thickness: 12.5 mm
2. Norgips CD 60 profiles, max. axial spacing every 60 cm <sup>1)1)1)1)1)1)1)1)</sup>
3. Profile Norgips UD 30
4. Norgips ES/ES Plus hangers, max. spacing every 120 cm
5. Optional Norgips sealing tape, width 30 mm
6. Norgips 3.5 x 25 mm sheet metal screws, max. spacing every 25 cm
7. Norgips 3.5 x 9.5 mm sheet metal screws with a self-tapping tip
8. Fastening pins, min. Ø 6 x 40 mm, max. spacing every 80 cm
9. Fastening pins, min. Ø 6 x 40 mm
10. Norgips Start & Finish ready-made joint compound or Norgips Start gypsum joint compound
11. Norgips reinforcing tape
12. Ready-made joint compound Norgips Extra Finish, ready-made joint compound Norgips Start & Finish, gypsum joint compound Norgips Finish
13. Optional mineral wool <sup>2)2)2)2)2)2)2)2)</sup>

## Technical data

 Max height 12.0 m	 Wall mass 9 kg/m <sup>2</sup>
 Cladding mass 10 kg/m <sup>2</sup> <sup>3)</sup>	 Acoustic insulation $\Delta R_W = \text{up to } 12 \text{ dB}$ <sup>4)</sup>

The above-mentioned parameters apply to a partition made of sheet metal profiles with a thickness of 0.55 and 0.6 mm.

- 1) If profiles are used in the horizontal orientation, their maximum profile axial spacing must be decreased to 500 mm. Moreover, the material consumption must be corrected using the calculator.
- 2) As regards partitions separating environments of various temperature levels, application of wall claddings with mineral wool must be preceded with an analysis of thermal and humidity conditions. Such an analysis may result in the necessity to apply a vapour resistant foil.
- 3) The weight specified does not include the insulation material weight.
- 4) Estimated increase in acoustic insulation effectiveness on the basis of the DIN 4109 standard

## Standard

### ★ BASIC

Provides a lightweight stable building with basic fire resistance. A robust and cost-effective solution.



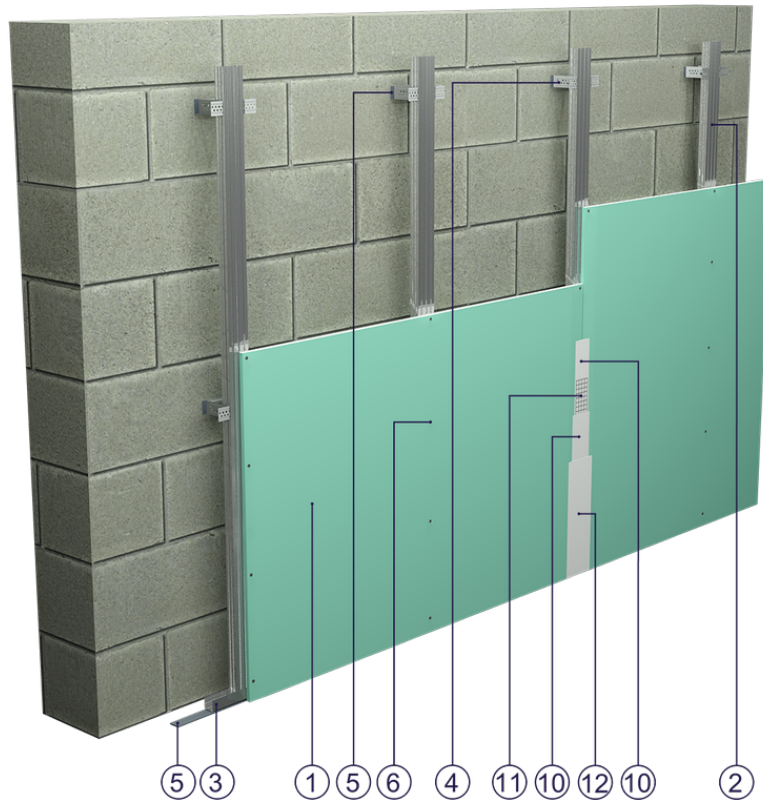


Fig. 1. Wall cladding view

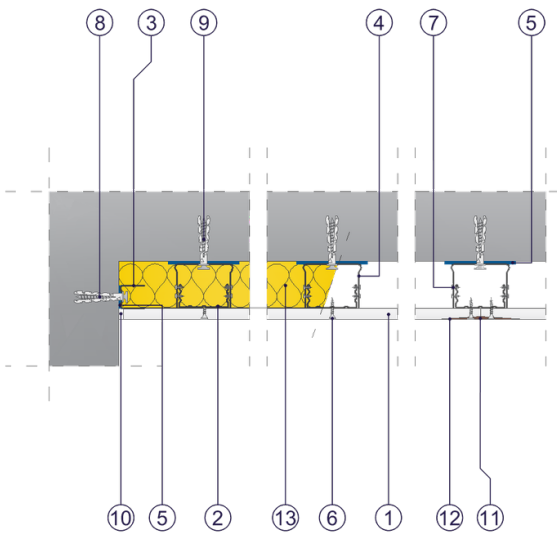


Fig. 2. Wall cladding horizontal section

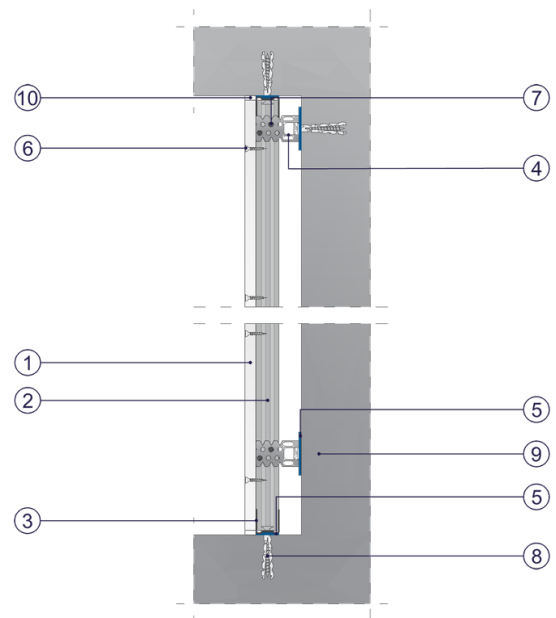


Fig. 3. Wall cladding vertical section