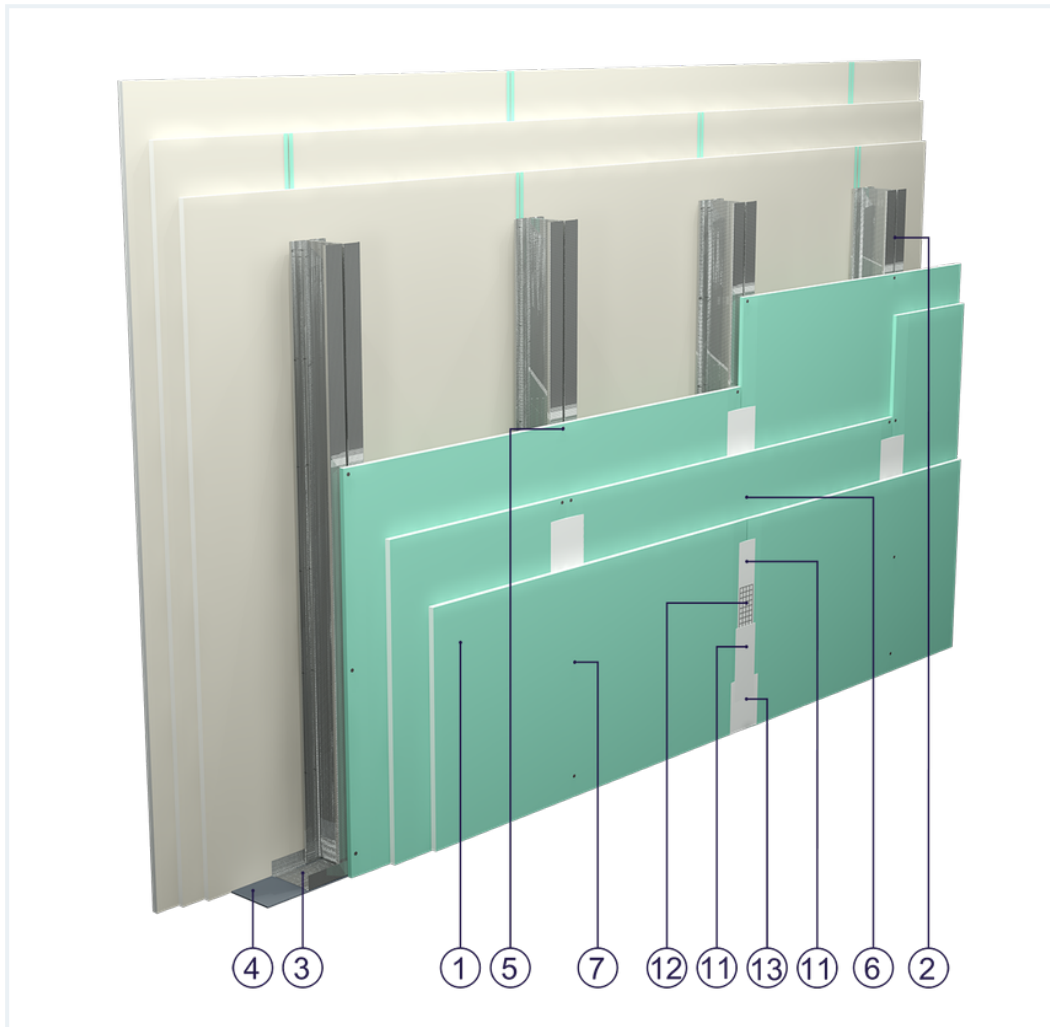


SYSTEM DATASHEET

High wall SD - 3x12,5 GKFI DFH2/CW 100+CW100/600 (W)




on a double structure made of CW 100 and UW 100 profiles with 600 mm spacing, triple sheathing with DFH2-type GKFI boards, thickness: 12.5 mm, with optional mineral wool filling



Partition wall components

1. Norgips S GKFI type DFH2 gypsum plasterboard , thickness: 12.5 mm
2. Norgips CW 100 double profiles, maximum axial spacing every 600 mm
3. Norgips UW 100 profiles mounted on horizontal load-bearing elements
4. Norgips sealing tape, width 100 mm
5. Norgips 3.5 x 25 mm sheet metal screws, max. spacing every 75 cm
6. Norgips 3.5 x 35 mm sheet metal screws, max. spacing every 50 cm
7. Norgips 3.5 x 55 mm sheet metal screws, max. spacing every 25 cm
8. Norgips 3.5 x 9.5 mm sheet metal screws with self-tapping bits, max. spacing every 50 cm
9. Steel dowels, min. \varnothing 6 x 40 mm, max. spacing every 80 cm
10. Openings in studs for installation wires
11. Norgips Start & Finish ready-made joint compound or Norgips Start gypsum joint compound
12. Norgips reinforcing tape
13. Ready-made joint compound Norgips Extra Finish, ready-made joint compound Norgips Start & Finish, gypsum joint compound Norgips Finish
14. Optional mineral wool

Technical data

 Fire resistance class EI 120 ¹⁾	 Max height 9.0 m ²⁾
 Wall mass 65 kg/m ² ³⁾	

The above-mentioned parameters apply to a partition made of sheet metal profiles with a thickness of 0.6 mm. Prior to constructing a partition, select a method of joining it with a ceiling, depending on the designed sag. Permissible variants are defined in the fire classification no. 06041/15/R24NP.

1) Based on classification no. LBO-061-KZ/25E

2) The stated heights apply to constructions with a profile spacing of 600 mm. The stated heights apply to rooms where only a few persons are present simultaneously (e.g. rooms in flats, hotels, hospitals). In rooms where a large number of persons are present simultaneously (e.g. conference rooms, classrooms, lecture halls), the permissible height is 7.1 m.

3) The weight specified does not include the insulation material weight.

Standard

☆☆☆ SUPER

It provides a very stable building with the highest fire resistance, sound insulation and hardness. Increased moisture resistance.



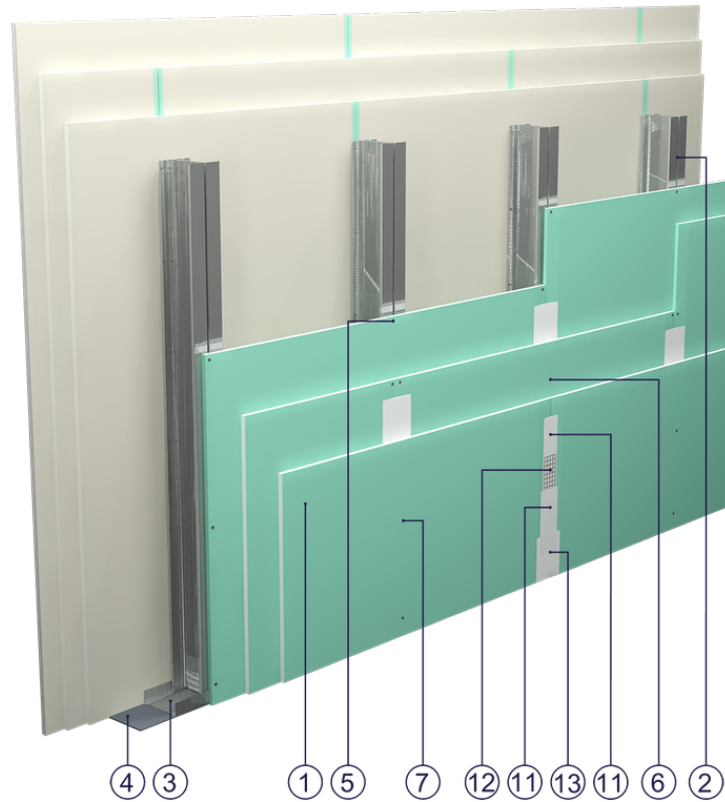


Fig. 1. Partition wall view

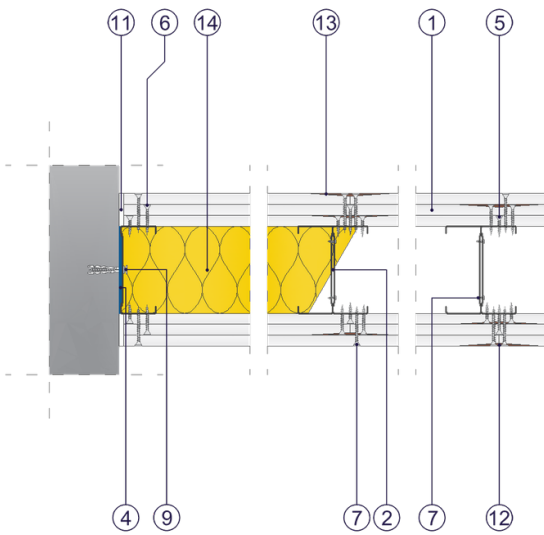


Fig. 2. Partition wall horizontal section

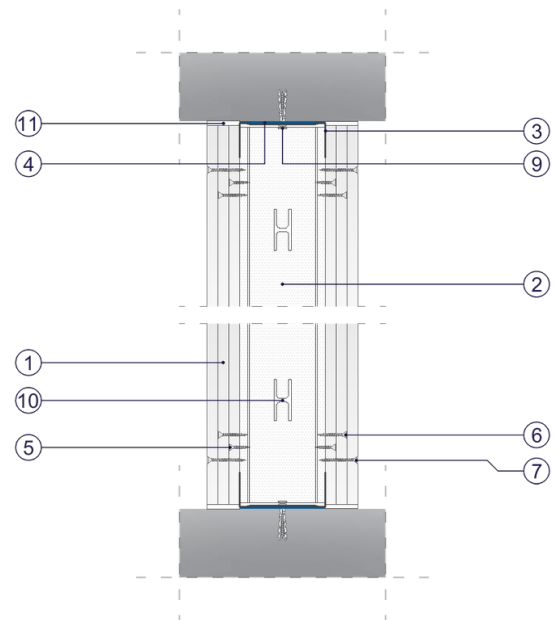


Fig. 3. Partition wall vertical section