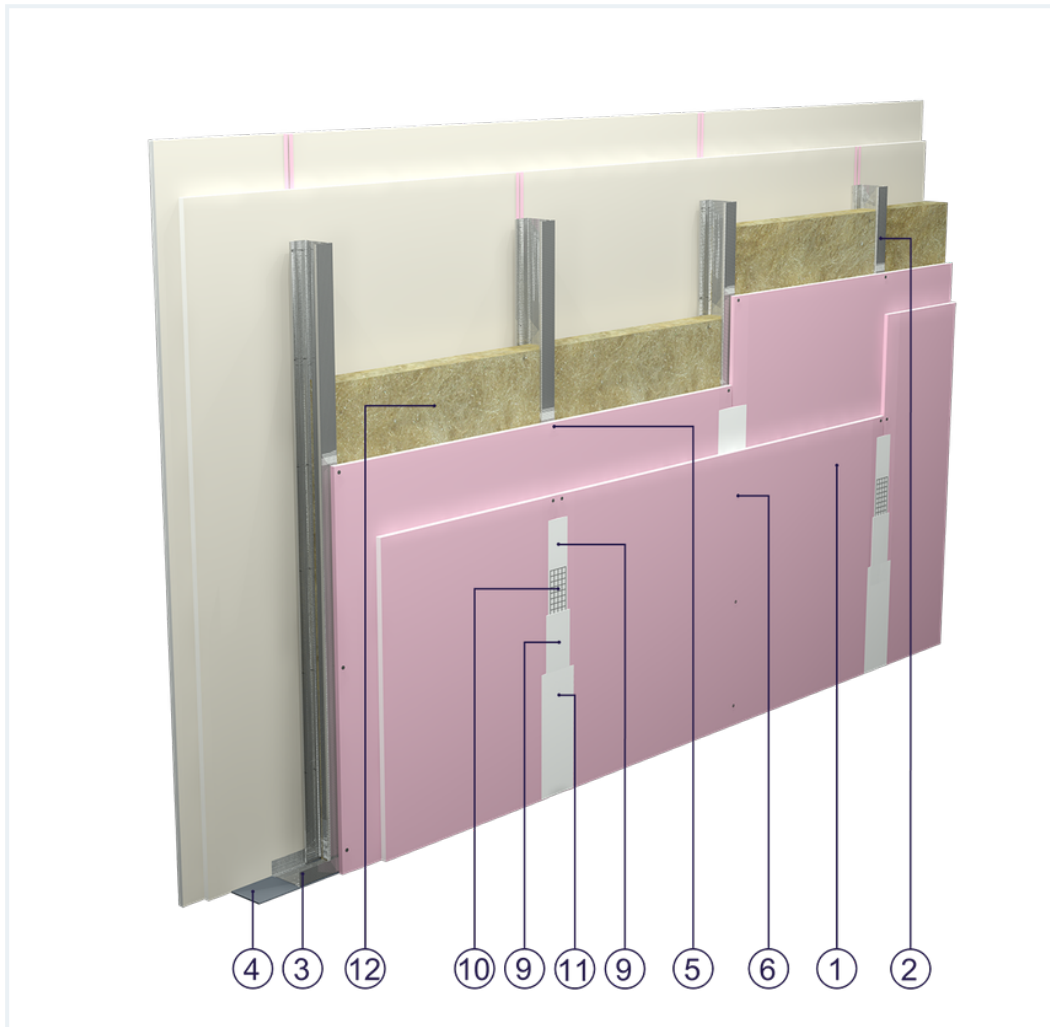


## SYSTEM DATASHEET

### Partition wall SD - 2x12,5 GKF DF/CW 75 W





on a CW 75 and UW 75 profile structure with double, DF-type plasterboard sheathing with a thickness of 12.5 mm with mineral wool filling



## Partition wall components

1. Norgips S GKF type DF gypsum plasterboard , thickness: 12.5 mm
2. Norgips CW 75 profiles, max. axial spacing every 60 cm
3. Norgips UW 75 profiles mounted on horizontal load-bearing elements
4. Norgips sealing tape, width 75 mm
5. Norgips 3.5 x 25 mm sheet metal screws, max. spacing every 75 cm
6. Norgips 3.5 x 35 mm sheet metal screws, max. spacing every 25 cm
7. Fastening pins, min.  $\varnothing$  6 x 40 mm, max. spacing every 80 cm
8. Openings in studs for installation wires
9. Norgips Start & Finish ready-made joint compound or Norgips Start gypsum joint compound
10. Norgips reinforcing tape
11. Ready-made joint compound Norgips Extra Finish, ready-made joint compound Norgips Start & Finish, gypsum joint compound Norgips Finish
12. Mineral wool

## Technical data

|  |   |
|--|---|
|  Fire resistance class<br>EI 120 <sup>1) 2)</sup> |  Max height<br>5.8 m <sup>1)</sup>   |
|  Wall mass<br>43 kg/m <sup>2</sup> <sup>3)</sup> |  Acoustic insulation<br>$R_W=56$ dB <sup>4)</sup> $R_{W1}=54$ dB <sup>5)</sup> $R_{A1}=53$ dB <sup>4)</sup><br>$R_{A2}=51$ dB <sup>5)</sup> |

The above-mentioned parameters apply to a partition made of sheet metal profiles with a thickness of 0.55 and 0.6 mm.

- 1) The stated heights apply to constructions with a profile spacing of 600 mm. When a structure with profiles spaced every 300 or 400 mm is used, the permissible wall height increases. Contact system provider representatives for details. The stated heights apply to rooms where only a few persons are present simultaneously (e.g. rooms in flats, hotels, hospitals). In rooms where a large number of persons are present simultaneously (e.g. conference rooms, classrooms, lecture halls), the permissible height is 4.9 m.
- 2) Based on classification no. LBO-060-KZ/20
- 3) The weight specified does not include the insulation material weight.
- 4) Based on report no. LA00-06041/12/R02NA for 75 mm glass wool
- 5) Based on report no. LA00-1000/2003/R02NA for 70 mm rock wool

## Standard

☆☆☆ SUPER

It provides a very stable building with the highest fire resistance, sound insulation and hardness.



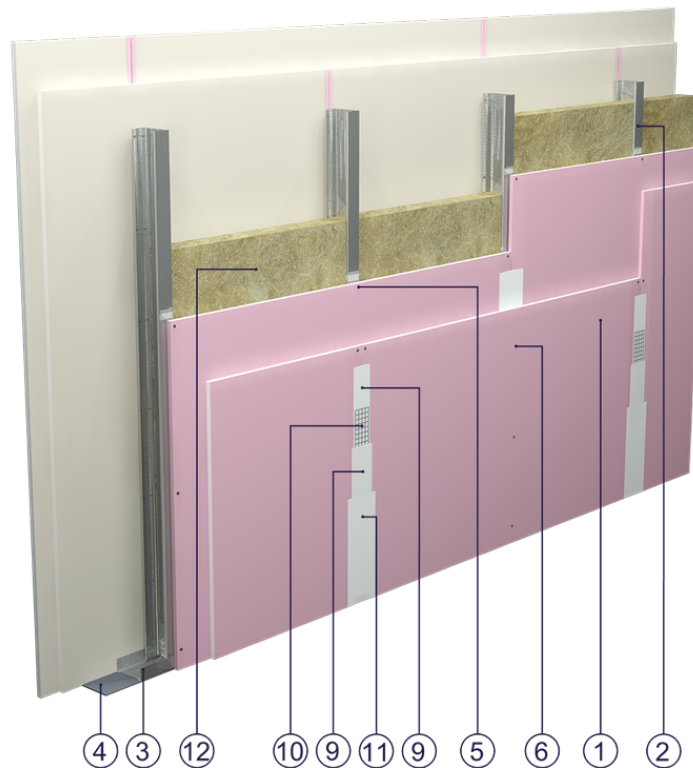


Fig. 1. Partition wall view

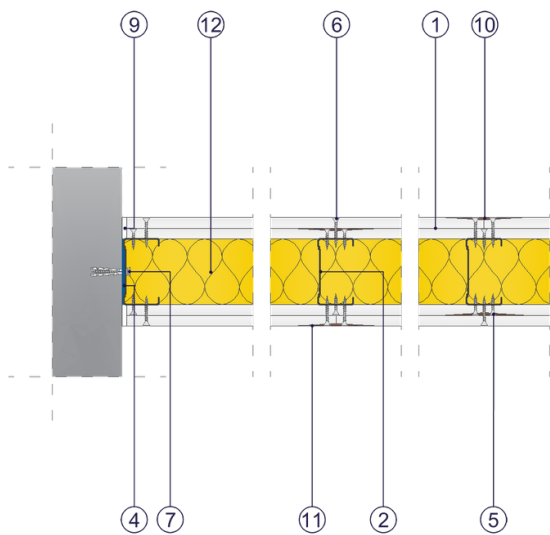


Fig. 2. Partition wall horizontal section

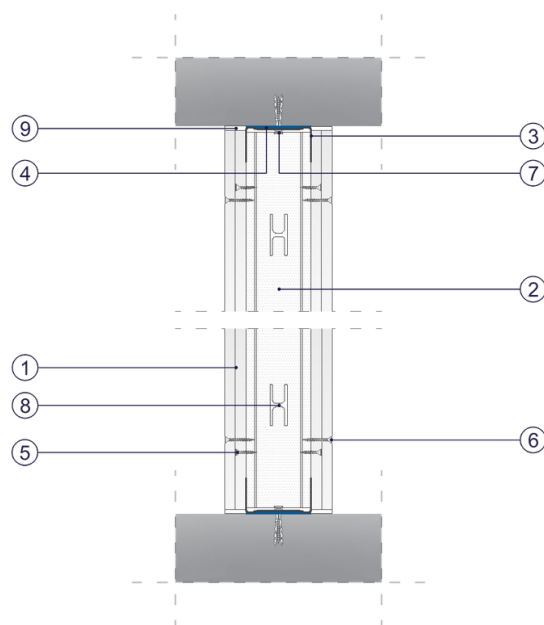


Fig. 3. Partition wall vertical section